

PLAT AND RECORD

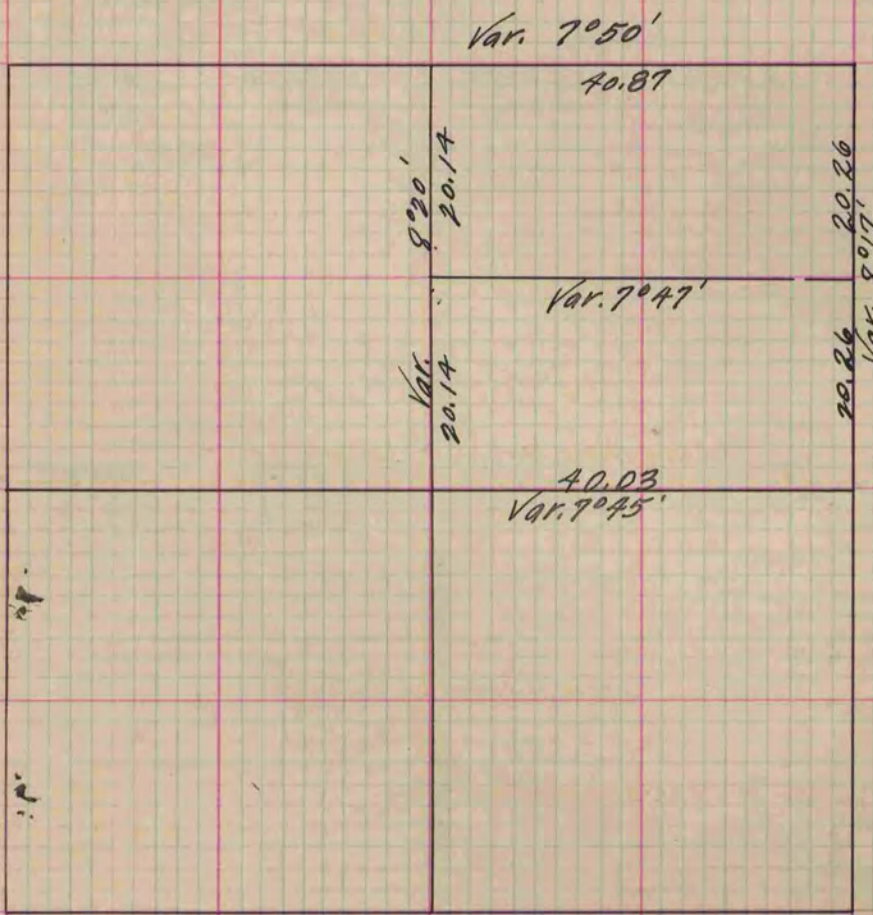
Of a Survey on Section 22 T 3 R 12 E. of the 4 P. M. in Janesville Township
Rock County, Wisconsin, made May the 29th 1860

I hereby certify that the following is a correct record of said survey as made by me.

COUNTY BUILDING
IN CITY OF БЕЛОIT

(Signed) Edward Roger
RMB

County Surveyor.



Copied from Page 143 Vol. 1. Original County Surveyor's Record