

# PLAT AND RECORD

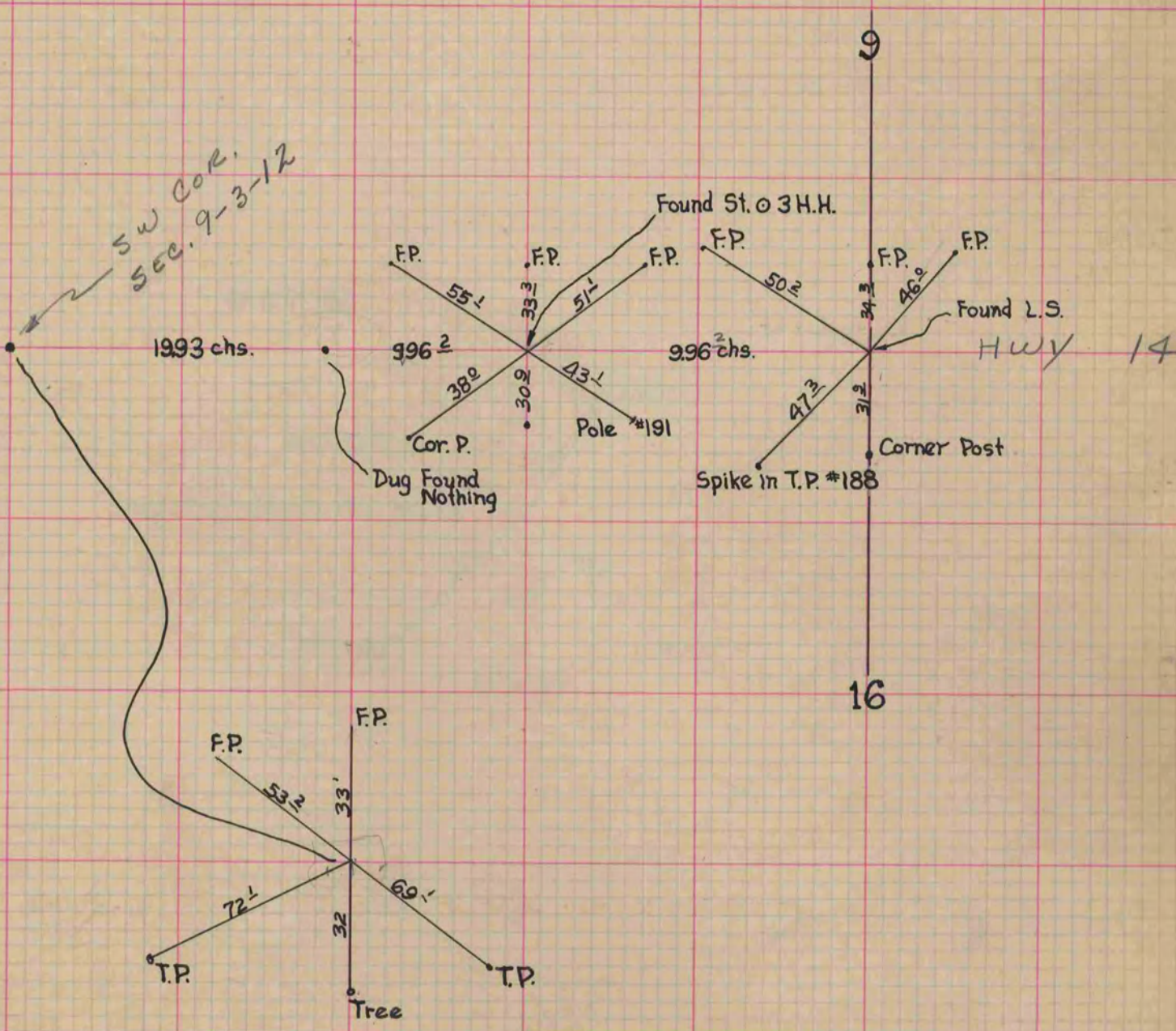
COUNTY BUILDING  
IN CITY OF BELOIT

Of a Survey on Section 9-16 T 3 R 12 E. of the 4 P. M. in JANESVILLE Township

Rock County, Wisconsin, made August the 17<sup>th</sup> 1921

I hereby certify that the following is a correct record of said survey as made by me.

(Signed) Alex W. Ely  
County Surveyor.



Mon. was also dug for in Sec. 32. Porter and Sec. 2<sup>2</sup> Center