

PLAT AND RECORD

137

Of a Survey on Section 20-21-28+29T 2 R 12 E. of the 4 P. M. in Rock Township

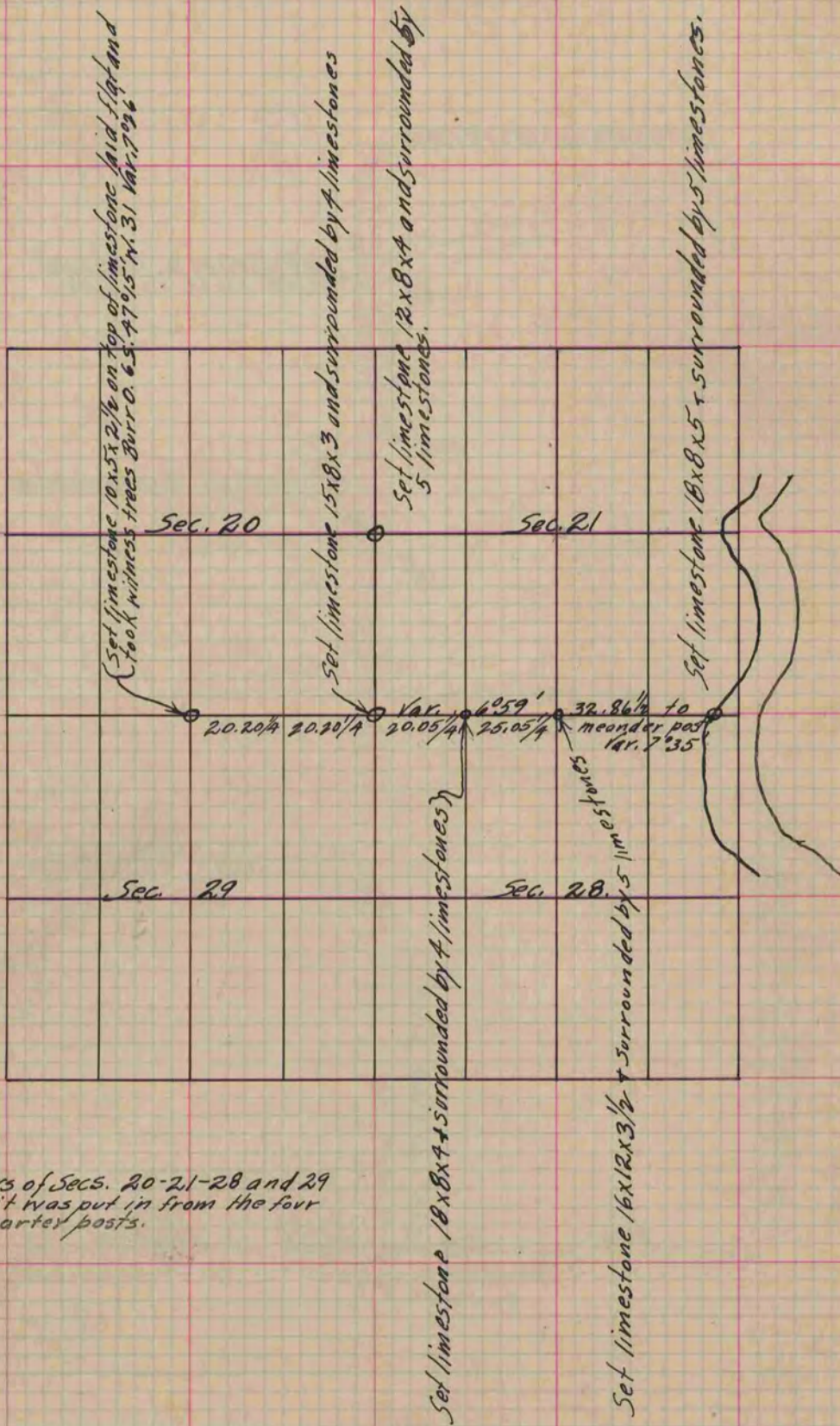
Rock County, Wisconsin, made September the 14th 1860

I hereby certify that the following is a correct record of said survey as made by me.

COUNTY BUILDING
IN CITY OF BELOIT

(Signed) Edward Ruger
ERM

County Surveyor.



The corners of Secs. 20-21-28 and 29 being gone it was put in from the four adjacent quarter posts.

Copied from Page 146 Vol. 1. Original County Surveyors Record.