

PLAT AND RECORD

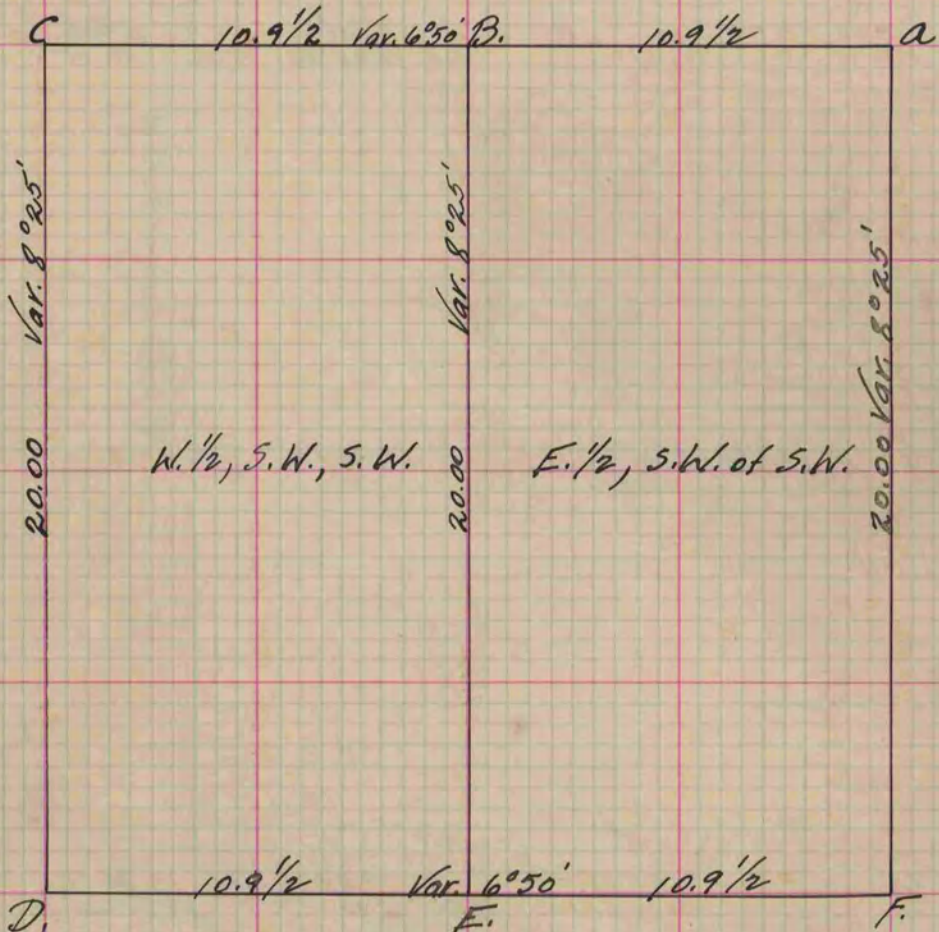
Of a Survey on Section 3 T 3 R 14 E. of the 4 P. M. in Johnstown Township

Rock County, Wisconsin, made February the 25th 1863

I hereby certify that the following is a correct record of said survey as made by me.

COUNTY BUILDING
IN CITY OF BELOIT

(Signed) Sylvanus D. Locke
RMS County Surveyor.



at "a" set stake with 3 stones near surface surrounding stake.

" "B" " " " " " " " " " "

" "C" " " " " " " " " " "

Burr Oak 14 inches S. 30° E. 45 links.

" "D." Found original post - South West corner of Section.

" "E" Set stake with 3 stone near surface surrounding stake.

" "F" White Oak 24 inches on Corner.

Copied from Page 183 Vol. 1 Original County Surveyor's Record.