

PG 305 JAMESVILLE
REC 12/15/75 DAB

PLAT AND RECORD

N.W. 1/4 of S.E. 1/4

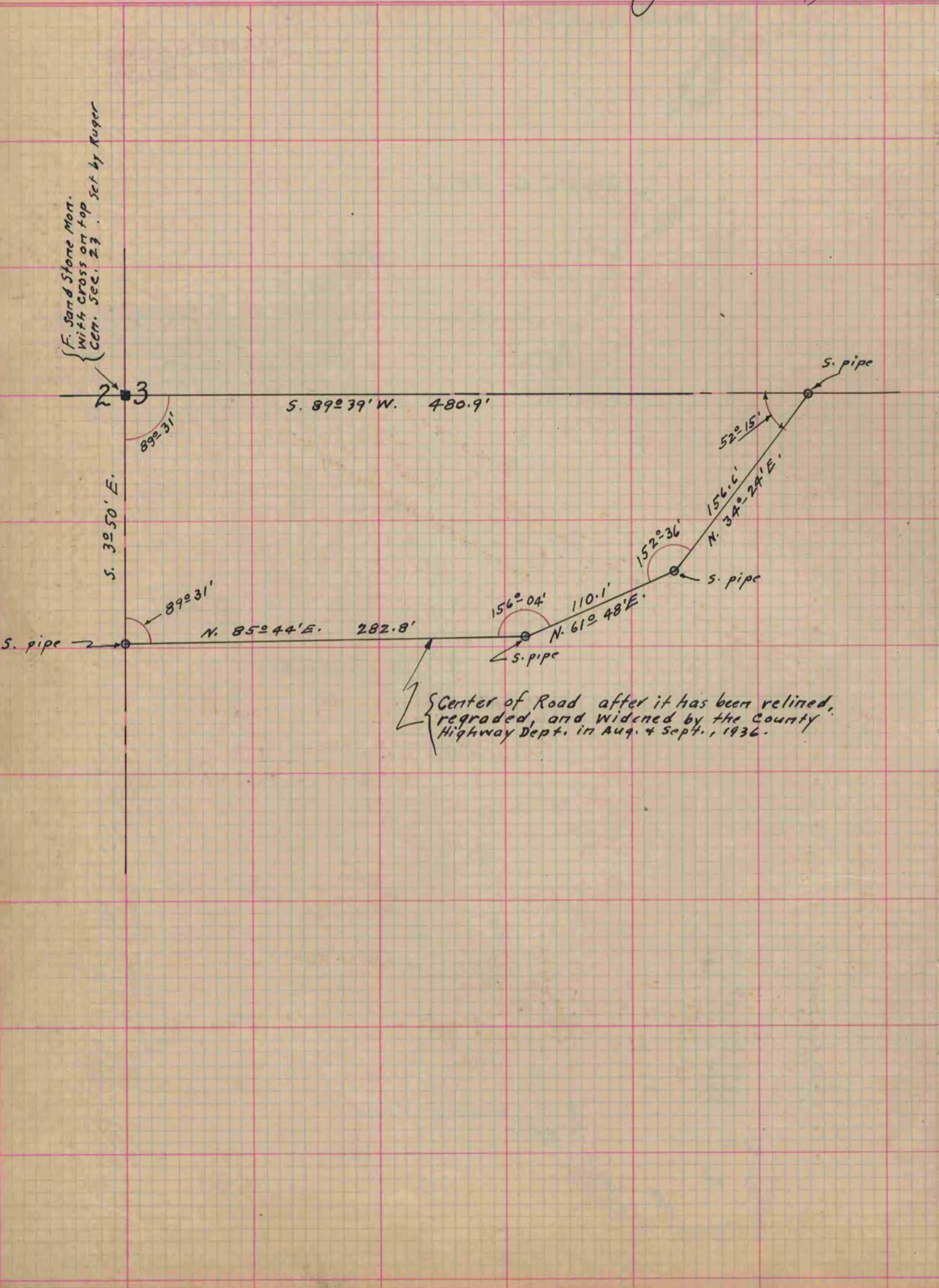
Of a Survey on Section 23 T 2 N. R 11 E. of the 4 P. M. in Plymouth Township

Rock County, Wisconsin, made Sept. the 24 & 25 1936.

I hereby certify that the following is a correct record of said survey as made by me.

COUNTY BUILDING
IN CITY OF БЕЛОIT

B. J. Bunny
County Surveyor.



F. Sand Stone Mon.
With Cross on top
Cen. Sec. 23 set by Ruger

S. 30° 50' E.

89° 31'

89° 31'

S. 89° 39' W. 480.9'

N. 85° 44' E. 282.8'

156° 04' 110.1' N. 61° 48' E.

152° 36'

52° 15'

156.6' N. 34° 24' E.

S. pipe

S. pipe

S. pipe

S. pipe