

TU559

(B) Describe any record evidence, monument evidence, occupational evidence, testimonial evidence or any other material evidence you considered, and whether the monument was found or placed.

1836 LYONS SET QUARTER SECTION POST BUR OAK 13 N64E 50 & BUR OAK 24 N46W 19.

1903 KERCH VOL 3 PG 20 STATES NOTHING. 2661.6 TO NE COR SEC 14.

1914 COLDWELL VOL 3 PG 73 FOUND STAKE 2660 TO SW COR SEC 13, 5296 TO E 1/4 COR SEC 13.

1968 BATTERMAN VOL 4 PG 475 FOUND REMAINS OF STAKE SET CORNER. MONUMENT WITH BRASS CAP.

1971 LEE VOL 4 PG 548 2661.04 TO NE COR SEC 14, 2663.16 TO SE COR SEC 14, 5334.14 TO W 1/4 COR SEC 14, ANGLE OF 90-40-58 AT E 1/4 COR FROM SE TO W 1/4 CORNERS OF SEC 14, ANGLE OF 89-56-23 AT E 1/4 COR FROM W 1/4 TO NE COR SEC 14, ANGLE OF 90-48-23 AT NE COR FROM E 1/4 TO N 1/4 CORNERS OF SEC 14, & ANGLE OF 90-36-39 AT W 1/4 COR FROM NW TO E 1/4 CORNERS OF SECTION 14.

FOUND BRASS DISK IN CONCRETE MONUMENT. PLACED CARSONITE POST ON NORTH SIDE OF MONUMENT. 2660.99 (REC 2661.04) TO NE COR SEC 14, 5334.14 (REC 5333.6) TO W 1/4 COR SEC 14, 2663.29 (REC 2663.16) TO SE COR SEC 14, ANGLE OF 90-58-36 (REC 90-40-58) AT E 1/4 COR SE 14 FROM SE TO W 1/4 CORNERS OF SEC 14, ANGLE OF 88-56-21 (REC 89-56-23) AT E 1/4 COR SE 14 FROM W 1/4 COR TO NE CORNERS OF SEC 14, & ANGLE OF 90-48-29 (REC 90-48-23) AT NE COR SEC 14 FROM E 1/4 COR TO N 1/4 COR SEC 14.

C) Was the corner restored through acceptance of (1) an obliterated evidence location, or, (2) a found perpetuated location?
ACCEPTED FOUND PERPETUATED LOCATION.

D) Describe any material discrepancy between the location of the corner as restored or reestablished and the location of that corner as previously restored or reestablished by distance and direction. Show the discrepancy on the plan view drawing under (a), above. Show the distances between the corner as previously restored or reestablished and (1) the corner as restored or reestablished, and (2) to at least 4 of the witness monuments shown on the drawing in (a), above.

(E) Was the corner reestablished through lost corner proportionate methods? If so, show the method, including the directions and distances to other public land survey corners used as evidence or used for proportioning the corner location.
NO

I, Donald Barnes, hereby certify that the corner points as identified by the corner code index were, in a field survey on 1995, established, re-established, monumented, re-monumented, recovered or restored as expressed below and in conformance with the regulations and rules as required in the current manual of survey instructions of the United States Department of Interior, Bureau of Land Management.

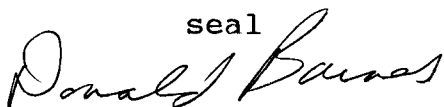
COUNTY SURVEYOR FILING DATA

Date of computer entry _____

Date microfilmed _____

Number of included sheets _____
CORNER CODE

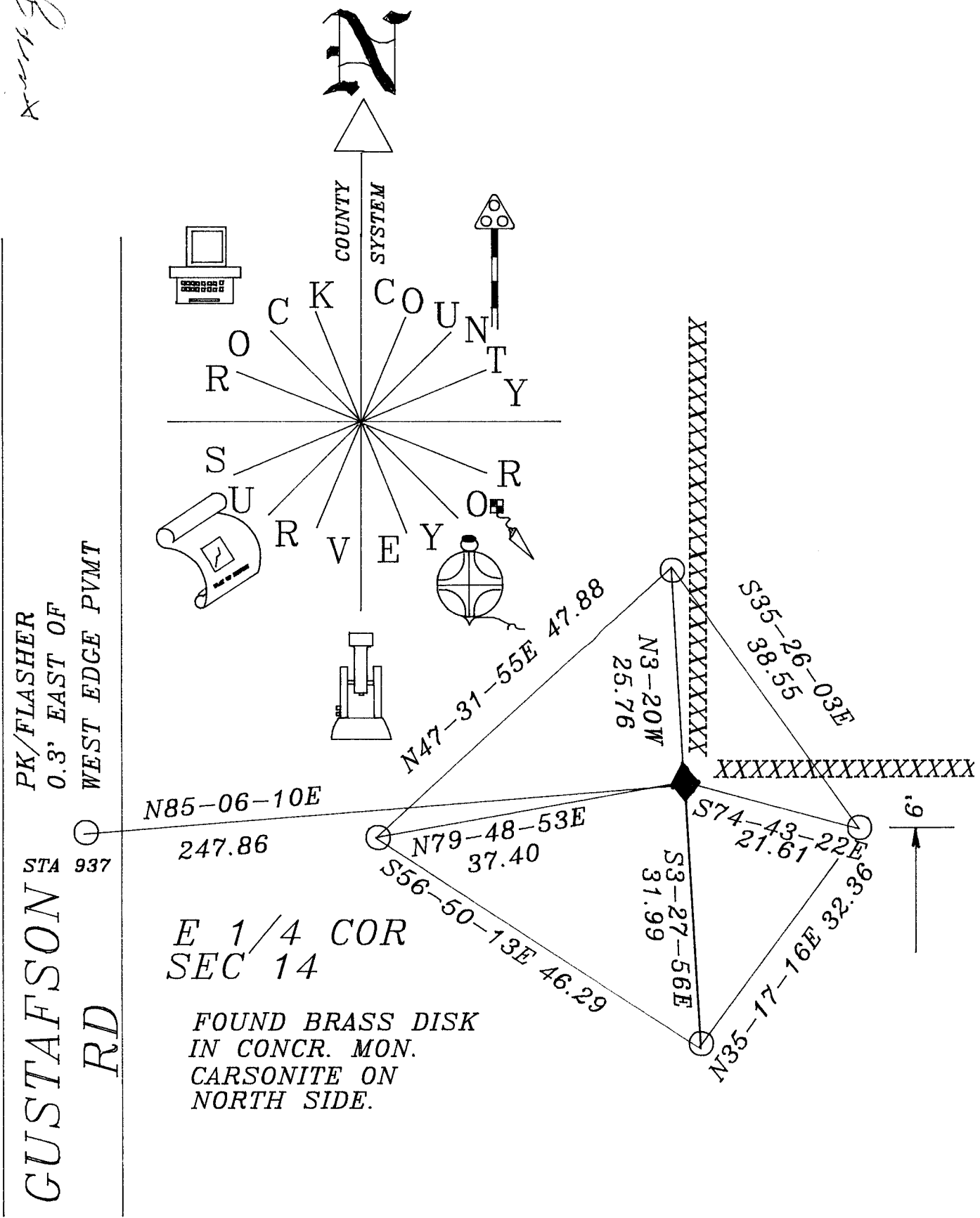
seal



7/11/95

EMBOSS LAND SURVEYOR SEAL

Donald Brown
10/17/95



E 1/4 COR
SEC 14

FOUND BRASS DISK
IN CONCR. MON.
CARSONITE ON
NORTH SIDE.