

U.S. PUBLIC LAND SURVEY MONUMENT RECORD

For Public Land Survey Corners in:

WI ADMINISTRATIVE CODE A-E 7.08 REQUIREMENT

T. 1N., R. 13E

CORNER CODE INDEX

| | | | | | | | | | | | | | | | | | | | | | | | | | |
|---|----|---|---|---|---|---|---|---|---|----|----|----|----|----|----|----|----|----|----|----|----|----|----|----|----|
| A | 1 | 2 | 3 | 4 | 5 | 6 | 7 | 8 | 9 | 10 | 11 | 12 | 13 | 14 | 15 | 16 | 17 | 18 | 19 | 20 | 21 | 22 | 23 | 24 | 25 |
| B | | | | | | | | | | | | | | | | | | | | | | | | | |
| C | 6 | | | | | | | | | | | | | | | | | | | | | | | | |
| D | | | | | | | | | | | | | | | | | | | | | | | | | |
| E | | | | | | | | | | | | | | | | | | | | | | | | | |
| F | 1 | | | | | | | | | | | | | | | | | | | | | | | | |
| G | | | | | | | | | | | | | | | | | | | | | | | | | |
| H | | | | | | | | | | | | | | | | | | | | | | | | | |
| I | | | | | | | | | | | | | | | | | | | | | | | | | |
| J | | | | | | | | | | | | | | | | | | | | | | | | | |
| K | 18 | | | | | | | | | | | | | | | | | | | | | | | | |
| L | | | | | | | | | | | | | | | | | | | | | | | | | |
| M | | | | | | | | | | | | | | | | | | | | | | | | | |
| N | | | | | | | | | | | | | | | | | | | | | | | | | |
| O | | | | | | | | | | | | | | | | | | | | | | | | | |
| P | 19 | | | | | | | | | | | | | | | | | | | | | | | | |
| Q | | | | | | | | | | | | | | | | | | | | | | | | | |
| R | | | | | | | | | | | | | | | | | | | | | | | | | |
| S | | | | | | | | | | | | | | | | | | | | | | | | | |
| T | 30 | | | | | | | | | | | | | | | | | | | | | | | | |
| U | | | | | | | | | | | | | | | | | | | | | | | | | |
| V | | | | | | | | | | | | | | | | | | | | | | | | | |
| W | | | | | | | | | | | | | | | | | | | | | | | | | |
| X | 31 | | | | | | | | | | | | | | | | | | | | | | | | |
| Y | | | | | | | | | | | | | | | | | | | | | | | | | |
| Z | | | | | | | | | | | | | | | | | | | | | | | | | |

TURTLE TWP
ROCK COUNTY WI

IF AVAILABLE
ROCK COUNTY COORDINATES PREFERRED

North _____ Elev. _____

East _____

Hor. Datum _____ Vert. Datum _____

LATITUDE _____ ELLIPS. HT. _____

LONGITUDE _____

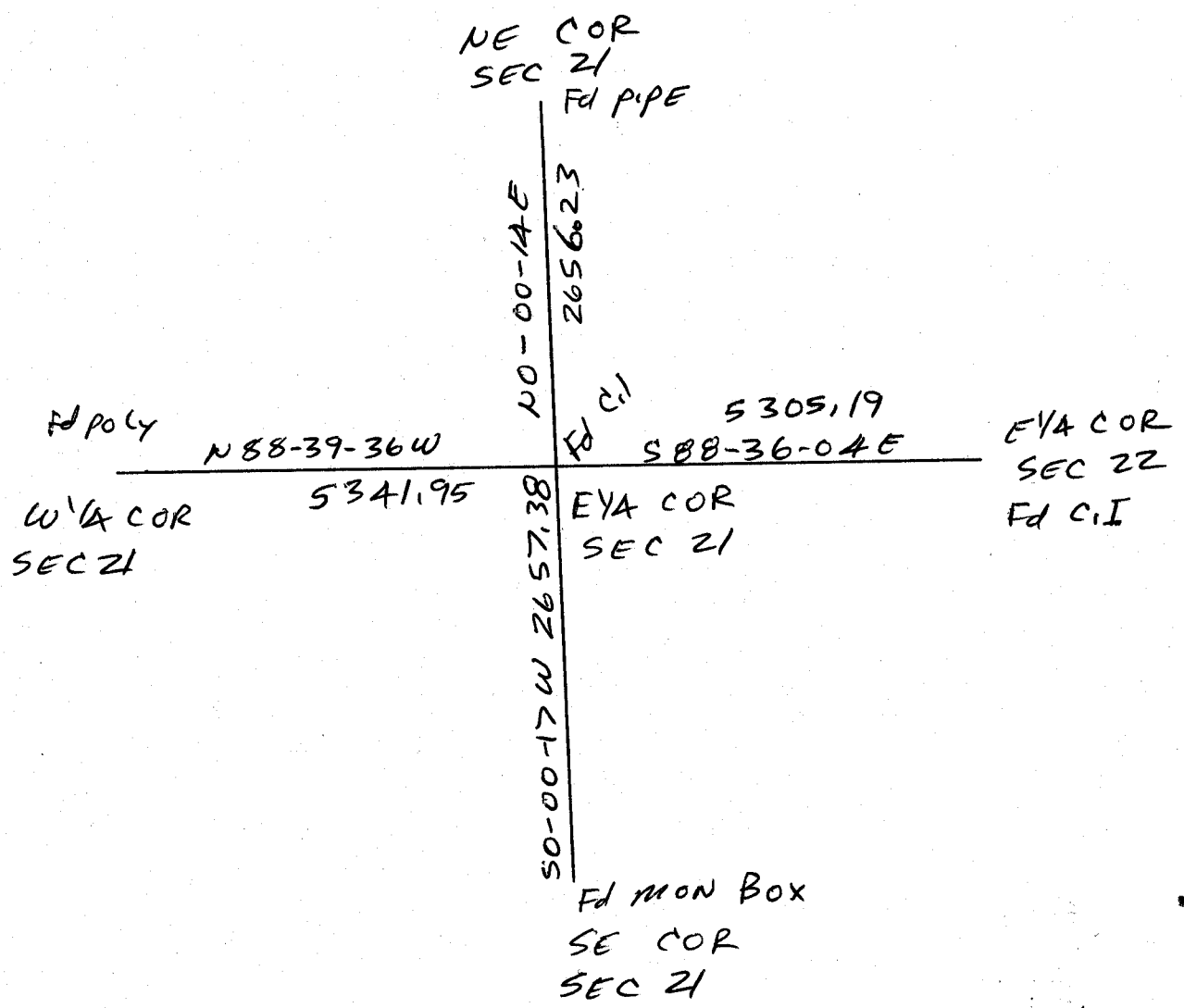
GPS (X) _____ TRAVERSE (X) _____

BASED ON THE FOLLOWING CONTROL:

PLACE MONUMENT SYMBOL \blacklozenge AT PROPER LOCATION ON ABOVE INDEX

\blacklozenge CORNER MONUMENT \circ WITNESS MONUMENT
Fd C.I

BEARINGS ARE BASED ON: COUNTY PROJECTION



FIELD BOOK _____ PAGE # _____

SHEET 1 OF 1

SHOW A PLAN VIEW DRAWING DEPICTING THE CORNER MONUMENT AND SURROUNDING PHYSICAL FEATURES, INCLUDING THE EXCAVATION AREA AND DEPTH.

PLANNING & ZONING COMMITTEE ADOPTED THE ABOVE FORM ON 12/2/1982

CORNER CODE P-13

TU577

(B) Describe any record evidence, monument evidence, occupational evidence, testimonial evidence or any other material evidence you considered, and whether the monument was found or placed.

1836 LYONS SET QUARTER SECTION POST BUR OAK 13 S50E 51(?) & BUR OAK 12 S28W 47. CALLS FOR 2640 TO SE & SW CORNERS OF SECTION 22.

1966 BATTERMAN VOL 4 PG 250 CALLS FOR 1" PIPE. FOUND PIN 204.54 SOUTH OF QUARTER CORNER. SET MONUMENT BOX AT PIN. (NOT AT 1/4 CORNER)

1972 LEE VOL 4 PG 585 CALLS FOR 2656.19 TO NW COR SEC 22, 2657.67 TO SW COR SEC 22, 2649.88 TO CENTER SEC 22, 5305.12 TO E 1/4 COR SEC 22, ANGLE OF 91-23-27 FROM NW COR SEC 22 TO CENTER SEC 22, ANGLE OF 88-36-23 FROM CENTER SEC 22 TO SW COR SEC 22, ANGLE OF 88-34-30 AT NW COR SEC 22 FROM N 1/4 COR SEC 22 TO W 1/4 COR SEC 22, ANGLE OF 1-14-44 @ SW COR SEC 22 FROM W 1/4 COR TO S 1/4 COR OF SEC 22.

1974 DOT VOL 6 PG 55 & 120 PROJECT 1093-02-85 CALLS FOR MONUMENT & N/S 195,553.78 & E/W 2,282,110.91.

FOUND CI. MONUMENT. 2656.23 (REC 2656.19) TO NW COR SEC 22, 2657.39 (REC 2657.67) TO SW COR SEC 22, 5305.19 (REC 5305.12) TO E 1/4 COR SEC 22, ANGLE OF 91-23-40 (REC 91-23-27) AT W 1/4 COR FROM NW TO E 1/4 CORNERS SEC 22, ANGLE OF 88-36-21 (REC 88-36-23) AT W 1/4 FROM E 1/4 COR TO SW CORNERS OF SEC 22, ANGLE OF 91-14-40 (REC 91-14-44) AT SW COR FROM W 1/4 TO S 1/4 CORNERS OF SEC 22, ANGLE OF 88-34-28 (REC 88-34-30) AT NW COR FROM N 1/4 TO W 1/4 CORNERS OF SEC 22, & ANGLE OF 91-23-44 (REC 91-23-42) AT E 1/4 COR FROM SE TO W 1/4 CORNERS OF SEC 22.

C) Was the corner restored through acceptance of (1) an obliterated evidence location, or, (2) a found perpetuated location?
ACCEPTED FOUND PERPETUATED LOCATION.

D) Describe any material discrepancy between the location of the corner as restored or reestablished and the location of that corner as previously restored or reestablished by distance and direction. Show the discrepancy on the plan view drawing under (a), above. Show the distances between the corner as previously restored or reestablished and (1) the corner as restored or reestablished, and (2) to at least 4 of the witness monuments shown on the drawing in (a), above.

(E) Was the corner reestablished through lost corner proportionate methods? If so, show the method, including the directions and distances to other public land survey corners used as evidence or used for proportioning the corner location.
NO

I, Donald Barnes, hereby certify that the corner points as identified by the corner code index were, in a field survey on, 1995, established, re-established, monumented, re-monumented, recovered or restored as expressed below and in conformance with the regulations and rules as required in the current manual of survey instructions of the United States Department of Interior, Bureau of Land Management.

COUNTY SURVEYOR FILING DATA

seal

Date of computer entry _____

Date microfilmed _____

Number of included sheets _____

CORNER CODE P-13

Donald Barnes

EMBOSS LAND SURVEYOR SEAL

AUG 30, 1999