

PUBLIC LAND SURVEY MONUMENT RECORD

For Public Land Survey Corners in the

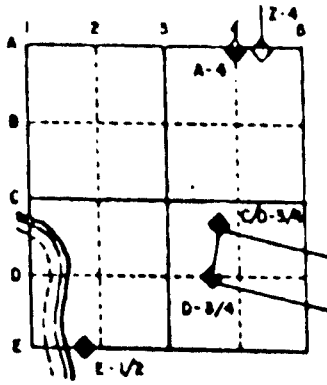
T. 1 N., R. 13 E.

CORNER CODE INDEX

	1	2	3	4	5	6	7	8	9	10	11	12	13	14	15	16	17	18	19	20	21	22	23	24	25
A																									
B																									
C																									
D																									
E																									
F																									
G																									
H																									
I																									
J																									
K																									
L																									
M																									
N																									
O																									
P																									
Q																									
R																									
S																									
T																									
U																									
V																									
W																									
X																									
Y																									
Z																									

PLACE MONUMENT SYMBOL (●) AT PROPER LOCATION ON ABOVE INDEX

EXAMPLE



TURTLE TWP  
ROCK COUNTY WI

IF AVAILABLE  
STATE PLANE COORDINATES

North (Y) 21,219.81 Eleve. (Z) \_\_\_\_\_  
East (X) 519,955.78 Zone \_\_\_\_\_  
Hor. Datum COUNTY Vert. Datum \_\_\_\_\_

◆ CORNER MONUMENT

○ WITNESS MONUMENT

BEARINGS ARE BASED ON:

TU590

(B) Describe any record evidence, monument evidence, occupational evidence, testimonial evidence or any other material evidence you considered, and whether the monument was found or placed.

1836 LYON SET QUARTER SECTION POST. BUR OAK 16 N71E 116.2' & BUR OAK 12 N64W 131.3'. CALLS FOR 2649.9 TO SE & SW CORNERS OF SEC 23.

1977 BARNES VOL 5 PG 258 FOUND PIPE & REFERENCED SAME.

1977 BARNES VOL 5 PG 334 FOUND 1" PIPE & REPLACED IT WITH AN ALUMINUM MONUMENT.

1987 LEE MAP #12363 FOUND ALUMINUM MONUMENT.

FOUND ALUMINUM MONUMENT AND REFERENCE PIPES.

C) Was the corner restored through acceptance of (1) an obliterated evidence location, or, (2) a found perpetuated location?

ACCEPTED FOUND PERPETUATED LOCATION.

D) Describe any material discrepancy between the location of the corner as restored or reestablished and the location of that corner as previously restored or reestablished by distance and direction. Show the discrepancy on the plan view drawing under (a), above. Show the distances between the corner as previously restored or reestablished and (1) the corner as restored or reestablished, and (2) to at least 4 of the witness monuments shown on the drawing in (a), above.

(E) Was the corner reestablished through lost corner proportionate methods? If so, show the method, including the directions and distances to other public land survey corners used as evidence or used for proportioning the corner location.

NO

I, Donald Barnes, hereby certify that the corner points as identified by the corner code index were, in a field survey on, 1994, established, re-established, monumented, re-monumented, recovered or restored as expressed below and in conformance with the regulations and rules as required in the current manual of survey instructions of the United States Department of Interior, Bureau of Land Management.

seal

*Donald Barnes*  
6/13/95

COUNTY SURVEYOR FILING DATA

Date of computer entry \_\_\_\_\_

Date microfilmed \_\_\_\_\_

Number of included sheets \_\_\_\_\_

CORNER CODE

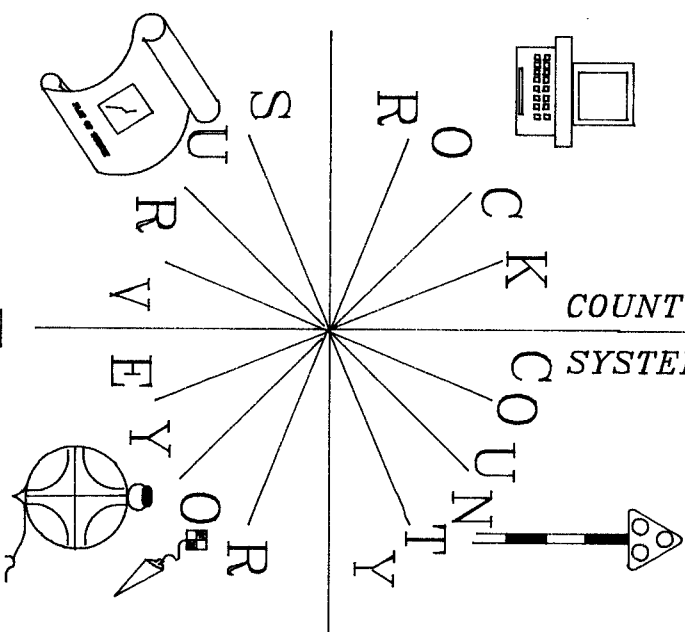
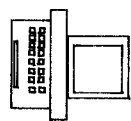
EMBOSS LAND SURVEYOR SEAL

A-E 7.08 REQUIREMENT

19  
K/27

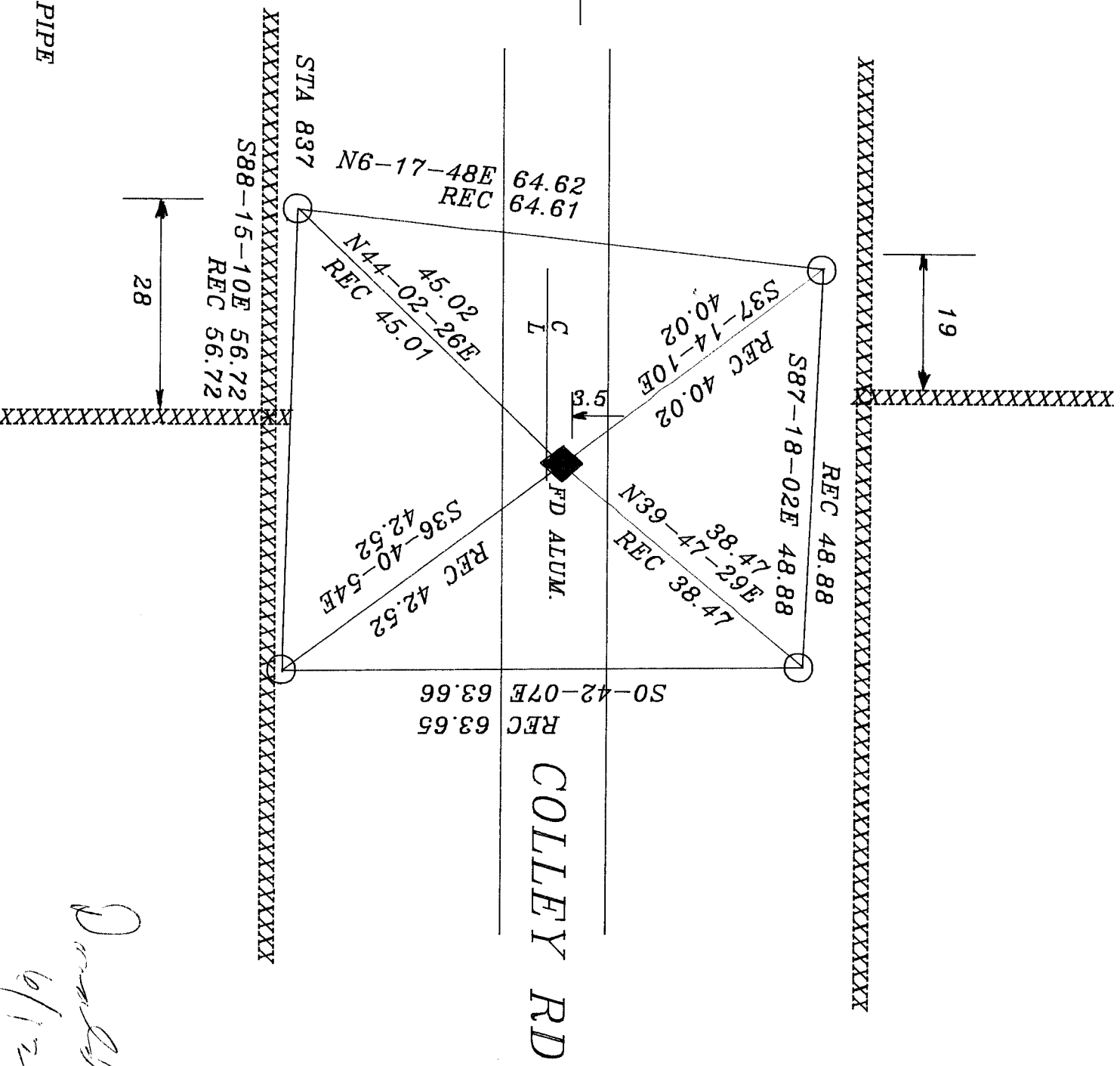
**N**

COUNTY SYSTEM



S 1/4 COR  
SEC 23

○ FD 1 1/2" X 24 PIPE



*Donald J. Barnes*  
6/12/95

19  
R 23