

U.S. PUBLIC LAND SURVEY MONUMENT RECORD

For Public Land Survey Corners in the

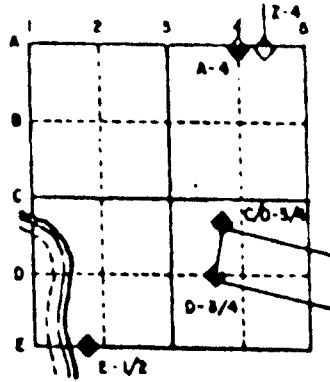
T. 1N., R. 13E

CORNER CODE INDEX

	1	2	3	4	5	6	7	8	9	10	11	12	13	14	15	16	17	18	19	20	21	22	23	24	25
A																									
B																									
C	6																								
D		5																							
E			4																						
F				3																					
G					2																				
H																									
I																									
J																									
K																									
L																									
M																									
N																									
O																									
P																									
Q																									
R																									
S																									
T																									
U																									
V																									
W																									
X																									
Y																									
Z																									

PLACE MONUMENT SYMBOL (◆) AT PROPER LOCATION ON ABOVE INDEX

EXAMPLE



TURTLE TWP
ROCK COUNTY WI

IF AVAILABLE
STATE PLANE COORDINATES

North (Y) 214,197.38 Elev. (Z) _____
 East (X) 506,650.63 Zone _____
 Hor. Datum COUNTY Vert. Datum _____

◆ CORNER MONUMENT

○ WITNESS MONUMENT

BEARINGS ARE BASED ON:

TU576 E 1/4 SEC 20

(B) Describe any record evidence, monument evidence, occupational evidence, testimonial evidence or any other material evidence you considered, and whether the monument was found or placed.

1911 KERCH VOL 3 PG 64 FOUND OLD STAKE. SET GAS PIPE. CALLS FOR 2632 TO CENTER OF SEC 20 & THE FOLLOWING ANGLES:

89-43-30 AT CENTER OF SEC 20 FROM N 1/4 TO E 1/4 COR SEC 20

90-16-15 AT E 1/4 COR FROM CENTER TO NE CORNERS OF SEC 20

89-43-45 AT NE COR FROM E 1/4 TO N 1/4 CORNERS OF SEC 20

89-53-30 AT SE COR FROM S 1/4 TO E 1/4 CORNERS OF SEC 20

1911 KERCH BK 7 PG 47 "PLAT OF MORGAN FARM" INFORMATION IS SAME AS IN VOL 3 PG 64

1988 COMBS MAP #12351 STATE NOTHING ABOUT THE MONUMENT. CALLS FOR THE WEST LINE OF SECTION 21 IN THE SURVEY.

CORNER IS IN A FARM FIELD. DUG & FOUND NOTHING. FOUND KERCH'S GAS PIPES TO THE NORTH & WEST. USED ALL OF KERCH'S DISTANCES TO PRORATE DISTANCE FROM THE FOUND 1/16TH CORNER TO THE NORTH AND TO THE CENTER OF SECTION 20. THE ANGLES AND DISTANCES TO THIS CORNER IS IN HARMONY WITH KERCH'S SURVEY. SEE VOL 6 PG 442 FOR MAP OF SECTION. PLACED POLY. MON. 16" DEEP.

C) Was the corner restored through acceptance of (1) an obliterated evidence location, or, (2) a found perpetuated location?

CORNER WAS RESTORED THROUGH ACCEPTANCE OF OBLITERATED EVIDENCE LOCATION.

D) Describe any material discrepancy between the location of the corner as restored or reestablished and the location of that corner as previously restored or reestablished by distance and direction. Show the discrepancy on the plan view drawing under (a), above. Show the distances between the corner as previously restored or reestablished and (1) the corner as restored or reestablished, and (2) to at least 4 of the witness monuments shown on the drawing in (a), above.

(E) Was the corner reestablished through lost corner proportionate methods? If so, show the method, including the directions and distances to other public land survey corners used as evidence or used for proportioning the corner location.

NO

I, Donald Barnes, hereby certify that the corner points as identified by the corner code index were, in a field survey on, May 30, 1995, established, re-established, monumented, re-monumented, recovered or restored as expressed below and in conformance with the regulations and rules as required in the current manual of survey instructions of the United States Department of Interior, Bureau of Land Management.

seal

Donald Barnes

7/14/95

EMBOSS LAND SURVEYOR SEAL

COUNTY SURVEYOR FILING DATA

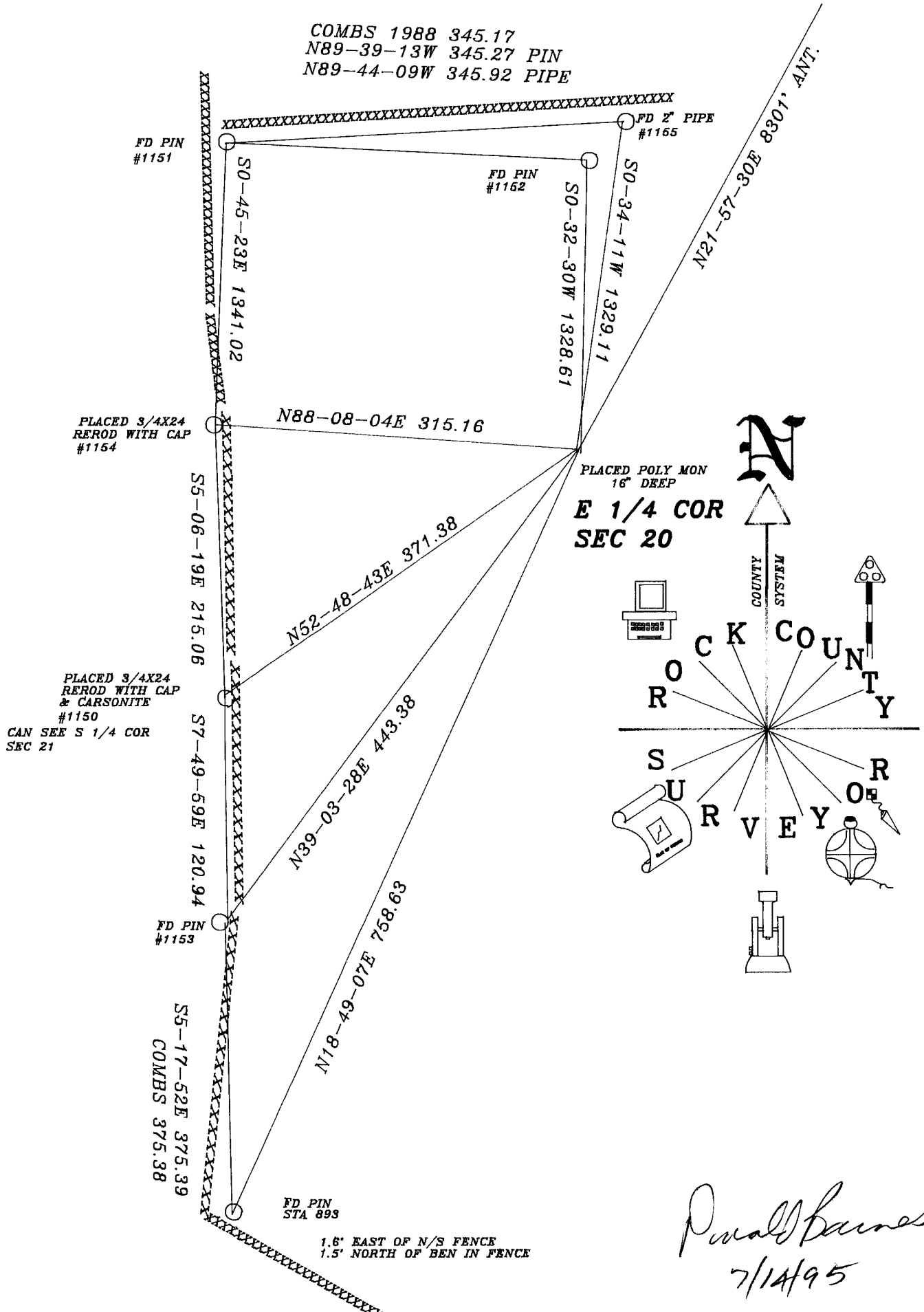
Date of computer entry _____

Date microfilmed _____

Number of included sheets _____

CORNER CODE _____

06 HI



P. J. Barnes
 7/14/95
 P9