

# U.S. PUBLIC LAND SURVEY MONUMENT RECORD

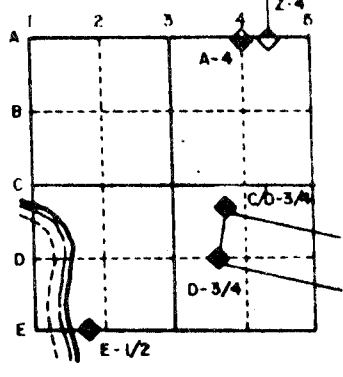
For Public Land Survey Corners in the  
T. 7 N., R. 13 E

## CORNER CODE INDEX

	1	2	3	4	5	6	7	8	9	10	11	12	13	14	15	16	17	18	19	20	21	22	23	24	25
A																									
B																									
C	6																								
D																									
E																									
F																									
G	7																								
H																									
I																									
J																									
K																									
L	18																								
M																									
N																									
O																									
P																									
Q																									
R																									
S																									
T	30																								
U																									
V																									
W																									
X																									
Y	31																								
Z																									

PLACE MONUMENT SYMBOL (◆) AT PROPER LOCATION ON ABOVE INDEX

### EXAMPLE



TURTLE TWP  
ROCK COUNTY WI

IF AVAILABLE  
STATE PLANE COORDINATES

North (Y) \_\_\_\_\_ Eleve. (Z) \_\_\_\_\_  
 East (X) \_\_\_\_\_ Zone \_\_\_\_\_  
 Hor. Datum \_\_\_\_\_ Vert. Datum \_\_\_\_\_

(a.)

◆ CORNER MONUMENT  
POLY MONUMENT WITH  
WHITE PLASTIC POST  
ON WEST SIDE

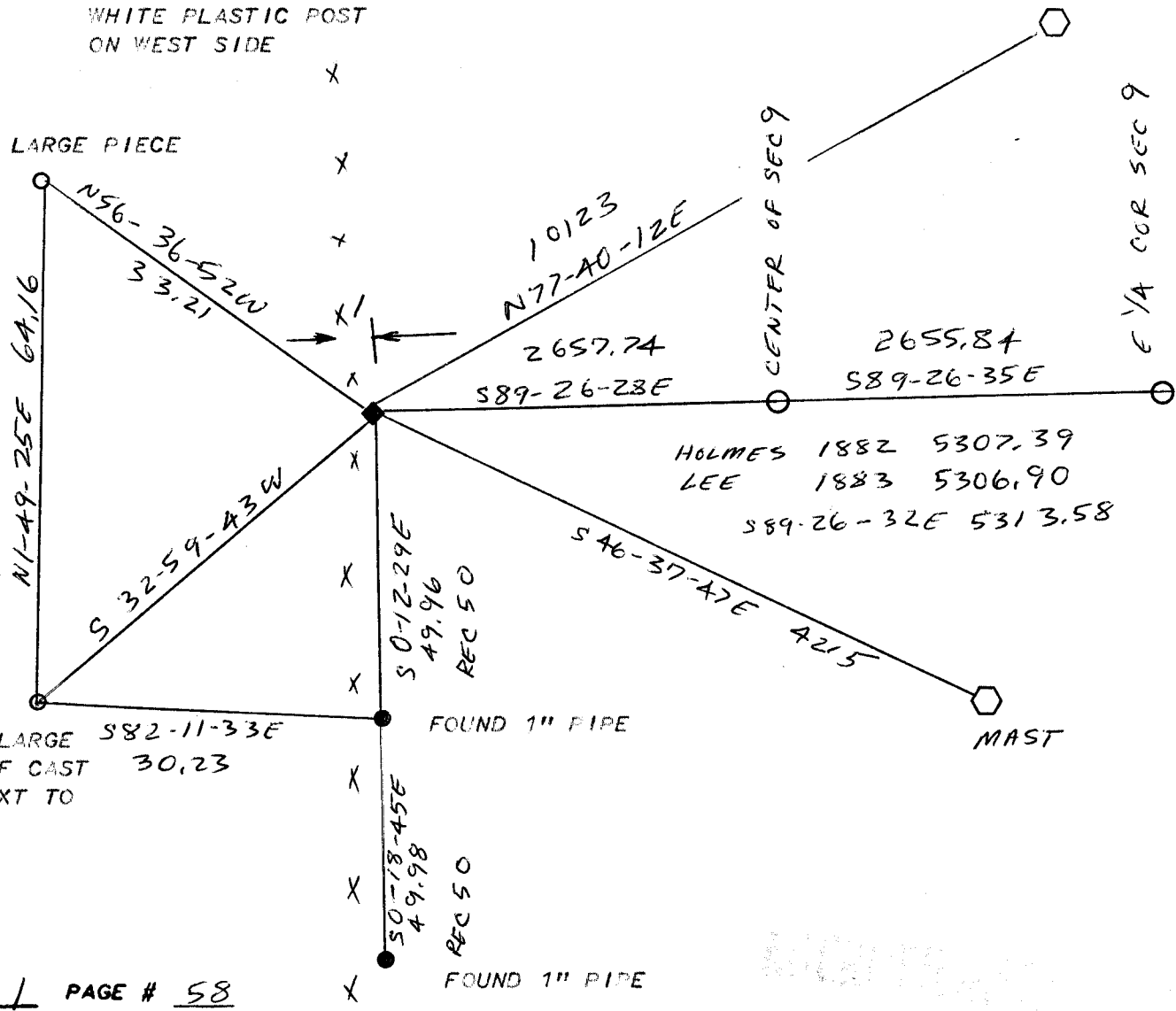
○ WITNESS MONUMENT

1/2"X24" REROD 15" DEEP

DURST WATER TANK

PLACED LARGE PIECE  
OF CAST IRON  
NEXT TO REROD

BEARINGS ARE BASED ON: ASSUMED



FIELD BOOK 1 PAGE # 58

SHOW A PLAN VIEW DRAWING DEPICTING THE CORNER MONUMENT AND SURROUNDING PHYSICAL FEATURES, INCLUDING THE EXCAVATION AREA AND DEPTH. THE CORNER MONUMENT SHALL HAVE THE FOLLOWING CHARACTERISTICS: 1) HAVE AT LEAST TWO PREDETERMINED BREAK-OFF POINTS. 2) IF BROKEN, LEAVE A PERMANENTLY MAGNETIZED REMNANT AT THE ORIGINAL POINT. 3) MUST BE EXTENDABLE. 4) THE CAP IS INSCRIBED ROCK COUNTY SURVEY MONUMENT - PENALTY FOR DISTURBING MARKER. 5) OR AN EXISTING CUT LIMESTONE. AN IRON PIPE 1 1/2" x 4'0" (MINIMUM) MAY BE USED IN AREAS WHERE GROUND WATER IS WITHIN ONE FOOT OF THE SURFACE. IF THE CORNER IS OCCUPIED BY AN IMPROVEMENT (MANHOLE, BURIED CABLE, ETC.) ANY DURABLE, DISTINCT MONUMENT MAY BE USED. CORNERS SHALL BE REFERENCED WITH AT LEAST 4 DURABLE WITNESS MONUMENTS. WITNESS MONUMENTS SHALL BE MADE OF CONCRETE, NATURAL STONE, IRON OR OTHER EQUALLY DURABLE MATERIAL, EXCEPT WOOD. DESCRIBE THE CORNER AND THE WITNESS MONUMENTS.

CORNER CODE: 69

(b.) Describe any record evidence, monument evidence, occupational evidence, testimonial evidence or any other material evidence you considered, and whether the monument was found or placed.

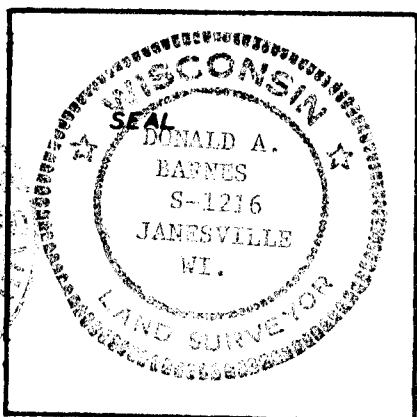
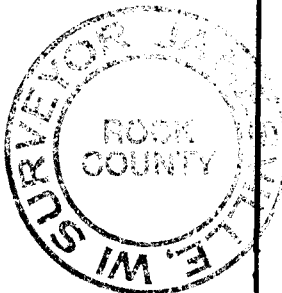
1853 McVEAN VOL 1-17 SHOWS NOTHING. USED TO SUBDIVIDE SECTION 9  
1882 HOLMES VOL 2 PG 356 FOUND STAKE THAT WAS SET BY LEE (VOL 2-368)  
1882 LEE VOL 2 PG 368 DROVE CHERRY STAKE. CORNER LOST. ESTABLISHED IT AT INTERSECTION OF EAST & WEST 1/4 LINES WITH SECTION LINE AS RUN BY ME. (SUBDIVIDED SEC 9)  
1882 LEE VOL 2 PG 369 FOUND 1/4 CORNER AS SET BY SELF IN FORMER SURVEY. SUBDIVIDED SECTION 8  
1919 BATTERMAN SR. VOL 3 PG 80 STATES NOTHING. USED CORNER TO SUBDIVIDED SEC 9  
1964 BATTERMAN JR. VOL 4+204 RESET PIPE FROM FORMER SURVEY OF R.H. BATTERMAN SR. SET PIPE 1.3' DEEP. SHOWS 2 50.00' REFERENCE PIPES & THE CORNER IS 18' NORTH OF THE E/W FENCE  
LEE 1970 CSM V2 PG39 FOUND PIPE  
1973 COMBS CSM V3 PG 157 FOUND PIPE. SHOWS A DISTANCE OF 727.3 TO CENTER OF CTH S I FOUND A 1" PIPE 15" DEEP. DROVE PIPE DEEP & PLACED POLY MONUMENT ON TOP. PLACED WHITE PLASTIC POST ON WEST SIDE.

(c.) Was the corner restored through acceptance of (1) an obliterated evidence location, or, (2) a found perpetuated location?

(d.) Describe any material discrepancy between the location of the corner as restored or reestablished and the location of that corner as previously restored or reestablished by distance and direction. Show the discrepancy on the plan view drawing under (c), above. Show the distances between the corner as previously restored or reestablished and (1) the corner as restored or reestablished, and (2) to at least 4 of the witness monuments shown on the drawing in (c), above.

(e.) Was the corner reestablished through lost corner proportionate methods? If so, show the method, including the directions and distances to other public land survey corners used as evidence or used for proportioning in determining the corner location.

I, Donald Barnes, hereby certify that the corner points as identified by the corner code index were, in a field survey on Dec 3 1987, established, re-established, monumented, re-monumented, recovered or restored as expressed below and in conformance with the regulations and rules as required in the current manual of survey instructions of the United States Department of Interior, Bureau of Land Management.



COUNTY SURVEYOR FILING DATA

Date of Computer Entry \_\_\_\_\_

Date Received \_\_\_\_\_

Date Microfilmed \_\_\_\_\_

Treasurer's Receipt No. \_\_\_\_\_

Number of Included Sheets \_\_\_\_\_

AFFIX YOUR LAND SURVEYOR SEAL. CORNER CODE 69