

PUBLIC LAND SURVEY MONUMENT RECORD

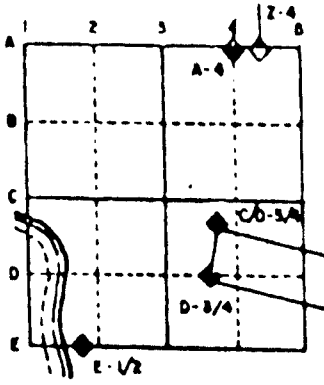
For Public Land Survey Corners in the

T. 1 N., R. 13 E.

CORNER CODE INDEX

	1	2	3	4	5	6	7	8	9	10	11	12	13	14	15	16	17	18	19	20	21	22	23	24	25
A																									
B																									
C																									
D																									
E																									

EXAMPLE



TURTLE TWP
ROCK COUNTY WI

IF AVAILABLE
STATE PLANE COORDINATES

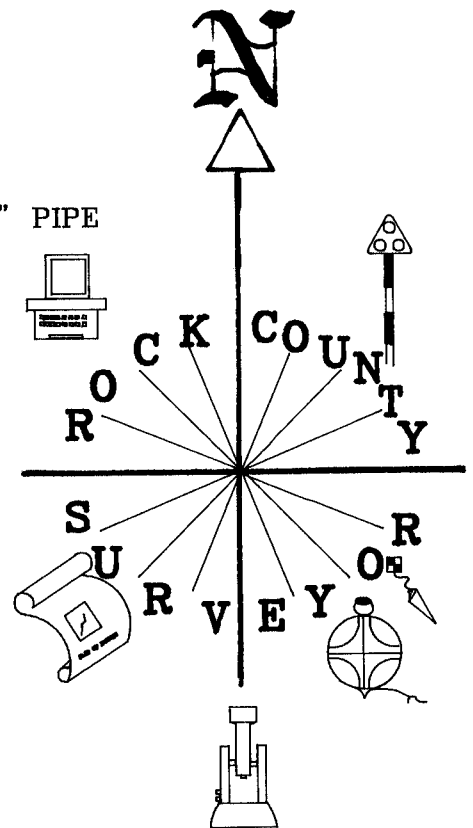
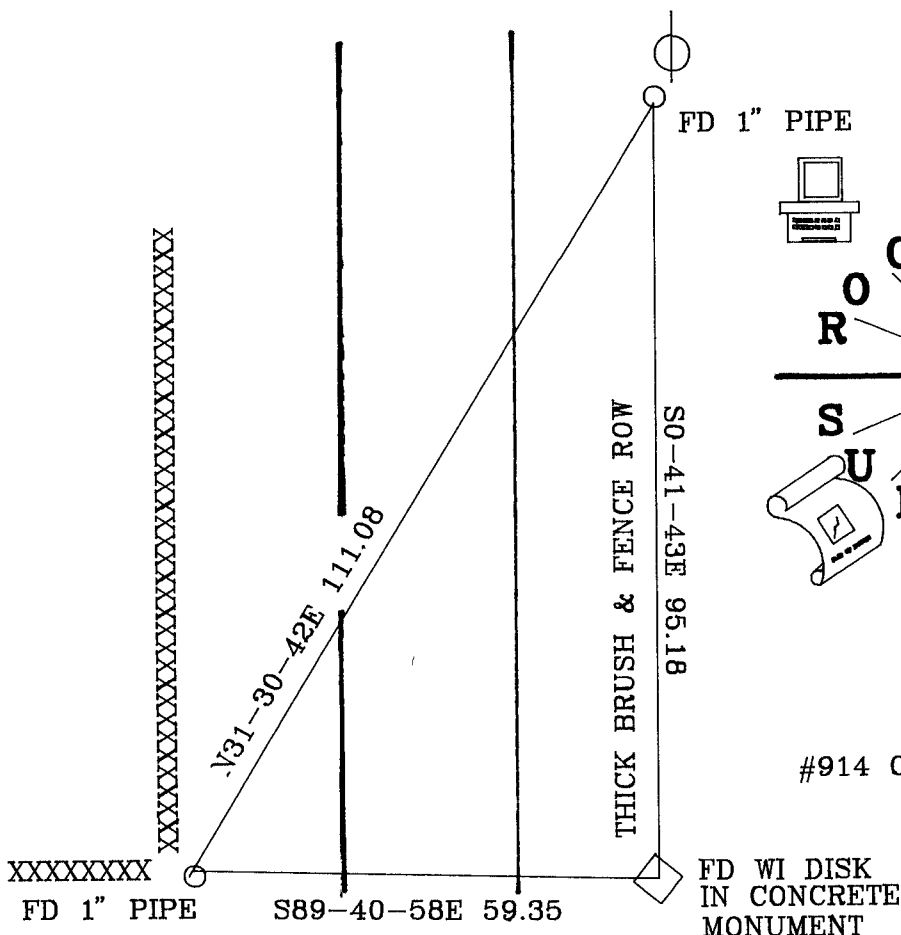
North (Y) 224,476.40 Elevation (Z) _____
 East (X) 520,003.70 Zone _____
 Hor. Datum COUNTY Vert. Datum _____

PLACE MONUMENT SYMBOL (◆) AT PROPER LOCATION ON ABOVE INDEX

◆ CORNER MONUMENT

○ WITNESS MONUMENT

BEARINGS ARE BASED ON TWP PROJECT



#914 OBSERVATION SHEET

SCHROEDER RD CENTER OF SEC 11

SHEET _____ OF _____

CORNER CODE: 619

(B) Describe any record evidence, monument evidence, occupational evidence, testimonial evidence or any other material evidence you considered, and whether the monument was found or placed.

- 1864 LOCKE VOL 1 PG 207 ESTABLISHED CENTER AT EQUAL DISTANCE FROM ALL 1/4 CORNERS. CALLS FOR 2637.36 TO E & W 1/4 CORNERS & 2641.98' TO N & S 1/4 CORNERS. SET BR. OAK STAKE & GREY HH 17X12X7 ON WEST & FLINT HH 10X7X4 ON EAST.
- 1865 LOCKE VOL 1 PG 238 REFERS TO VOL 1 PG 207. CALLS FOR 2646.6 TO N & S 1/4 CORNERS OF SEC 11 & 2642.90' TO E & W 1/4 CORNERS OF SECTION 11.
- 1882 HOLMES VOL 2 PG 346 FOUND HH 17X14X8. SMALL ONE ON E&W. CALLS FOR 2644.62' TO W 1/4 CORNER SEC 11 & 1326.6' TO 1/16th CORNER TO THE SOUTH.
- 1970 BATTERMAN JR. VOL 4 PG 475 FOUND STONE SET BY RUGER. SET 4X30 CAST IRON MONUMENT.
- 1974 WI DOT VOL 6 PG 120 DATA FROM DOT HWY PROJECT 1093-1-21 4-16/73 & HWY PROJECT 1093-2-22 3/8/74. CALLS FOR A CAST IRON MONUMENT.

FOUND CONCRETE MONUMENT WITH DOT DISK IN TOP & TWO REFERENCE PIPES.

C) Was the corner restored through acceptance of (1) an obliterated evidence location, or, (2) a found perpetuated location?
ACCEPTED FOUND PERPETUATED LOCATION.

D) Describe any material discrepancy between the location of the corner as restored or reestablished and the location of that corner as previously restored or reestablished by distance and direction. Show the discrepancy on the plan view drawing under (a), above. Show the distances between the corner as previously restored or reestablished and (1) the corner as restored or reestablished, and (2) to at least 4 of the witness monuments shown on the drawing in (a), above.

(E) Was the corner reestablished through lost corner proportionate methods? If so, show the method, including the directions and distances to other public land survey corners used as evidence or used for proportioning the corner location.
NO

I, Donald Barnes, hereby certify that the corner points as identified by the corner code index were, in a field survey on, Sep 6, 1994, established, re-established, monumented, re-monumented, recovered or restored as expressed below and in conformance with the regulations and rules as required in the current manual of survey instructions of the United States Department of Interior, Bureau of Land Management.

COUNTY SURVEYOR FILING DATA

Date of computer entry _____

Date microfilmed _____

Number of included sheets _____
CORNER CODE

seal

Sep 26, 1994

Donald Barnes

EMBOSS LAND SURVEYOR SEAL