

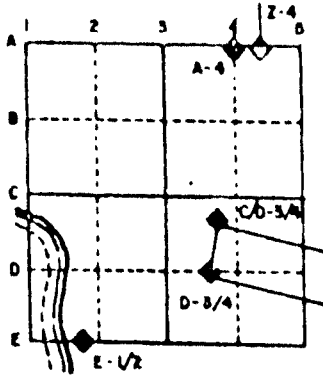
U. S. PUBLIC LAND SURVEY MONUMENT RECORD

For Public Land Survey Corners in the
 T. 1 N., R. 11 E.
CORNER CODE INDEX

	1	2	3	4	5	6	7	8	9	10	11	12	13	14	15	16	17	18	19	20	21	22	23	24	25
A																									
B																									
C																									
D																									
E																									
F																									
G																									
H																									
I																									
J																									
K																									
L																									
M																									
N																									
O																									
P																									
Q																									
R																									
S																									
T																									
U																									
V																									
W																									
X																									
Y																									
Z																									

PLACE MONUMENT SYMBOL (◆) AT PROPER LOCATION ON ABOVE INDEX

EXAMPLE



NEWARK TWP
 ROCK COUNTY WI

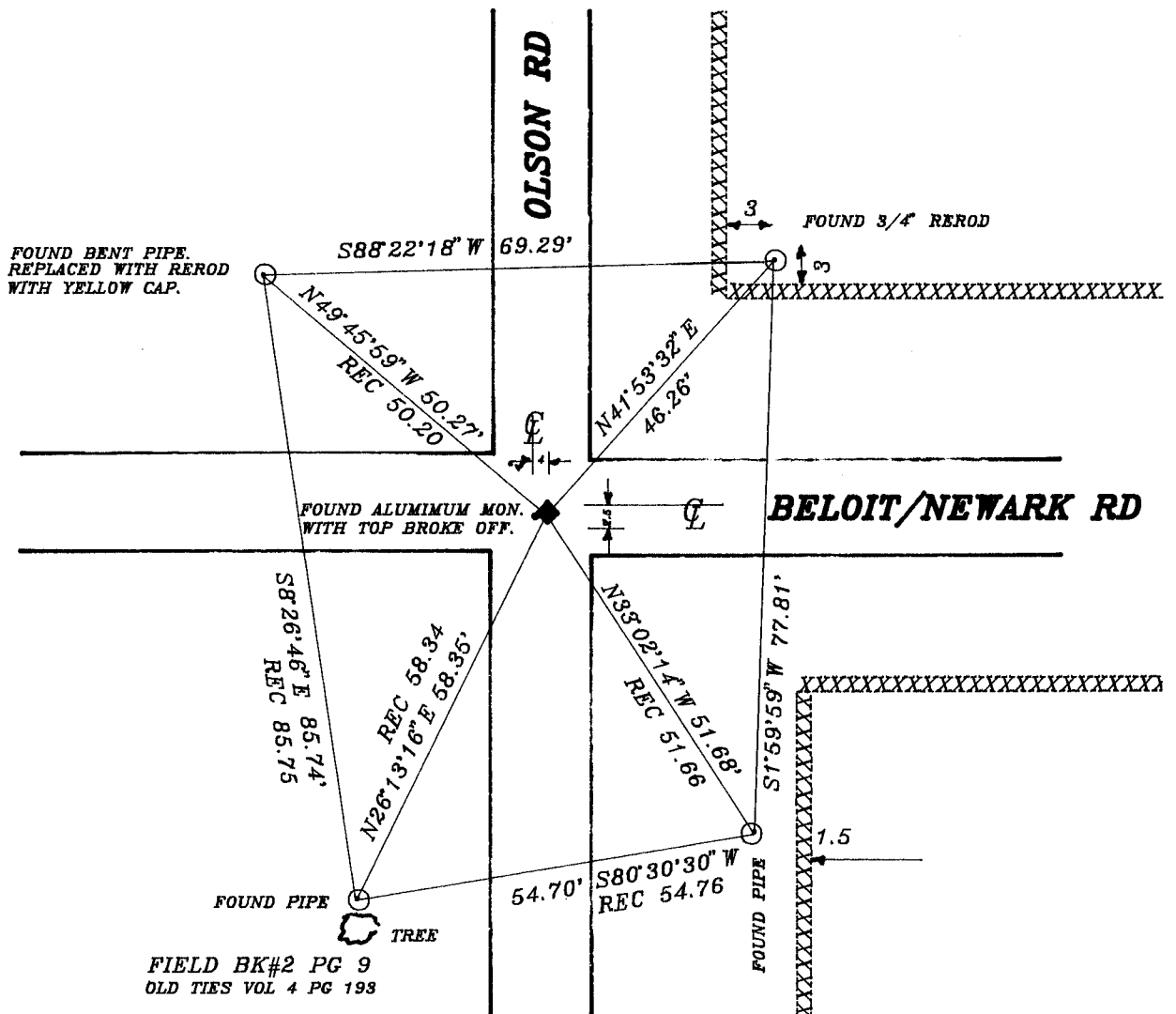
IF AVAILABLE
 STATE PLANE COORDINATES

North (Y) _____ Eleve. (Z) _____
 East (X) _____ Zone _____
 Hor. Datum _____ Vert. Datum _____

◆ CORNER MONUMENT

○ WITNESS MONUMENT

BEARINGS ARE BASED ON: ASSUMED



FIELD BK#2 PG 9
 OLD TIES VOL 4 PG 193

MICROFILMED

SHEET ___ OF ___

CORNER CODE: N11

(B) Describe any record evidence, monument evidence, occupational evidence, testimonial evidence or any other material evidence you considered, and whether the monument was found or placed.

- 1834 MILLER ORIG SURVEYOR. SET 1/4 SEC POST.; BO 16 N6W 31.68', BO 12 S73E 40.26. 2632.08 TO SE CORNER OF SECTION 16 AND 2632.74 TO SW CORNER OF SECTION 16.
- 1871 COLLINS REMONUMENTATION PROJECT. EAST BETWEEN 16 & 21. INTERSECTED 1/4 LINE 4.62' NORTH OF CORNER. SET 1/4 STONE IN PLACE OF STAKE AND STONE. CORRECTED VAR 4-51. CALLED FOR 2638.02 TO SW CORNER OF SECTION 16 AND 2638.68 TO SE CORNER OF SECTION 16. PLACED CUT LIMESTONE.
- 1964 BATTERMAN JR. VOL 4 PG 193 FOUND CUT STONE AND REFERENCED SAME.
- 1976 BARNES VOL 5 PG 144 CALLS FOR 2635.77 TO SE CORNER OF SEC.
- 1976 LEUENBERGER CSM VOL 5 PG 230 CALLS FOR A CUT STONE AND 2649.28 TO CENTER OF SEC 16.
- 1979 COMBS CSM VOL 8 PG 397 CALLS FOR 2647.52 TO CENTER OF SEC 21 BUT STATES NOTHING ABOUT THE CORNER.
- 1989 BARNES VOL 6 PG 401 FOUND PK. CALLS FOR 2645.20 TO CENTER OF SEC 16 AND 2637.34 TO SW CORNER OF SEC 16.
- 1989 SCHROEDER CSM VOL 14 PG 169. USED CORNER BUT STATES NOTHING ABOUT IT.
- 1989 COMBS MAP #00305. SET PIN.

FOUND ALUMINUM MONUMENT WITH TOP BROKE OFF.

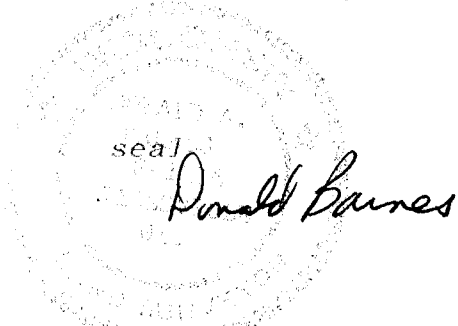
(C) Was the corner restored through acceptance of (1) an obliterated evidence location, or, (2) a found perpetuated location?

ACCEPTED FOUND MONUMENT.

(D) Describe any material discrepancy between the location of the corner as restored or reestablished and the location of that corner as previously restored or reestablished by distance and direction. Show the discrepancy on the plan view drawing under (a), above. Show the distances between the corner as previously restored or reestablished and (1) the corner as restored or reestablished, and (2) to at least 4 of the witness monuments shown on the drawing in (a), above.

(E) Was the corner reestablished through lost corner proportionate methods? If so, show the method, including the directions and distances to other public land survey corners used as evidence or used for proportioning the corner location.

I, Donald Barnes, hereby certify that the corner points as identified by the corner code index were, in a field survey on, March 4 1992, established, re-established, monumented, re-monumented, recovered or restored as expressed below and in conformance with the regulations and rules as required in the current manual of survey instructions of the United States Department of Interior, Bureau of Land Management.



COUNTY SURVEYOR FILING DATA

Date of computer entry _____

Date microfilmed _____

Number of included sheets _____

CORNER CODE

AFFIX YOUR LAND SURVEYOR SEAL