

U.S. PUBLIC LAND SURVEY MONUMENT RECORD

For Public Land Survey Corners in:

WI ADMINISTRATIVE CODE A-E 7.08 REQUIREMENT

T. 1 N., R. 11 E

CORNER CODE INDEX

A	1	2	3	4	5	6	7	8	9	10	11	12	13	14	15	16	17	18	19	20	21	22	23	24	25
B																									
C	6																								
D																									
E																									
F																									
G	7																								
H																									
J																									
K	18																								
L																									
M																									
N																									
O																									
P	19																								
Q																									
R																									
S																									
T	30																								
U																									
V																									
W																									
X	31																								
Y																									
Z																									

NEWARK TWP

ROCK COUNTY WI

IF AVAILABLE
ROCK COUNTY COORDINATES PREFERRED

North _____ Elev. _____

East _____

Hor. Datum _____ Vert. Datum _____

LATITUDE _____ ELLIPS. HT. _____

LONGITUDE _____

GPS (X) _____ TRAVERSE (X) _____

BASED ON THE FOLLOWING CONTROL:

PLACE MONUMENT SYMBOL AT PROPER LOCATION ON ABOVE INDEX

CORNER MONUMENT

WITNESS MONUMENT

(a)

BEARINGS ARE BASED ON: _____

FIELD BOOK _____ PAGE # _____

SHEET 1 OF 2

SHOW A PLAN VIEW DRAWING DEPICTING THE CORNER MONUMENT AND SURROUNDING PHYSICAL FEATURES, INCLUDING THE EXCAVATION AREA AND DEPTH.

PLANNING & ZONING COMMITTEE ADOPTED THE ABOVE FORM ON 12/2/1982

CORNER CODE R-11

NE586

(B) Describe any record evidence, monument evidence, occupational evidence, testimonial evidence or any other material evidence you considered, and whether the monument was found or placed.

1834 MILLER PG 26 EAST RANDOM BETWEEN 21 & 28
3709.2 CREEK 6.6' C. S.E.

5285.94 SEC LINE 34.98' SOUTH POST. LAND SAME
WEST CORRECTED

2642.64 SET 1/4 SEC POST BUR OAK 15 N51W 36.96; BUR OAK 14 S8E 41.58'

3451.8 BUR OAK 12 IN DIA

5285.94 SEC CORNER

1871 COLLINS REMONUMENTATION NOTES

PG 178 EAST BETWEEN 21 & 28 VARIATION 4-15

2638.02 SET 1/4 STONE BY STUMPS OF WITNESS TREES

CONTINUED EAST VARIATION 5

5268.78 SECTION CORNER OCT 27, 1871

1978 BARNES VOL 5 PG 491 FD CUT LIMESTONE 0.3' ABOVE GROUND AT FENCE INT.

1998 LEUENBERGER #8199 2634.86 TO NW COR SEC 28

FD CUT L.S. 0.5' ABOVE GRADE @ FENCE INT. PLACED CARSONITE POST ON EAST FACE OF L.S.

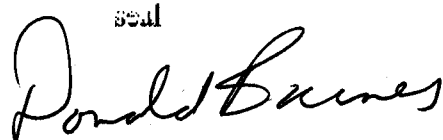
C) Was the corner restored through acceptance of (1) an obliterated evidence location, or, (2) a found perpetuated location?

ACCEPTED FOUND CUT L.S.

D) Describe any material discrepancy between the location of the corner as restored or reestablished and the location of that corner as previously restored or reestablished by distance and direction. Show the discrepancy on the plan view drawing under (a), above. Show the distances between the corner as previously restored or reestablished and (1) the corner as restored or reestablished, and (2) to at least 4 of the witness monuments shown on the drawing in (a), above.

(E) Was the corner reestablished through lost corner proportionate methods? If so, show the method, including the directions and distances to other public land survey corners used as evidence or used for proportioning the corner location.

I, Donald Barnes, hereby certify that the corner location as identified by the corner code index was determined by me under my direction and control and that this U.S. Public Land Survey Monument Record is correct and complete to the best of my knowledge and belief.

seal


7-02-01

emboss

Number of included sheets 1

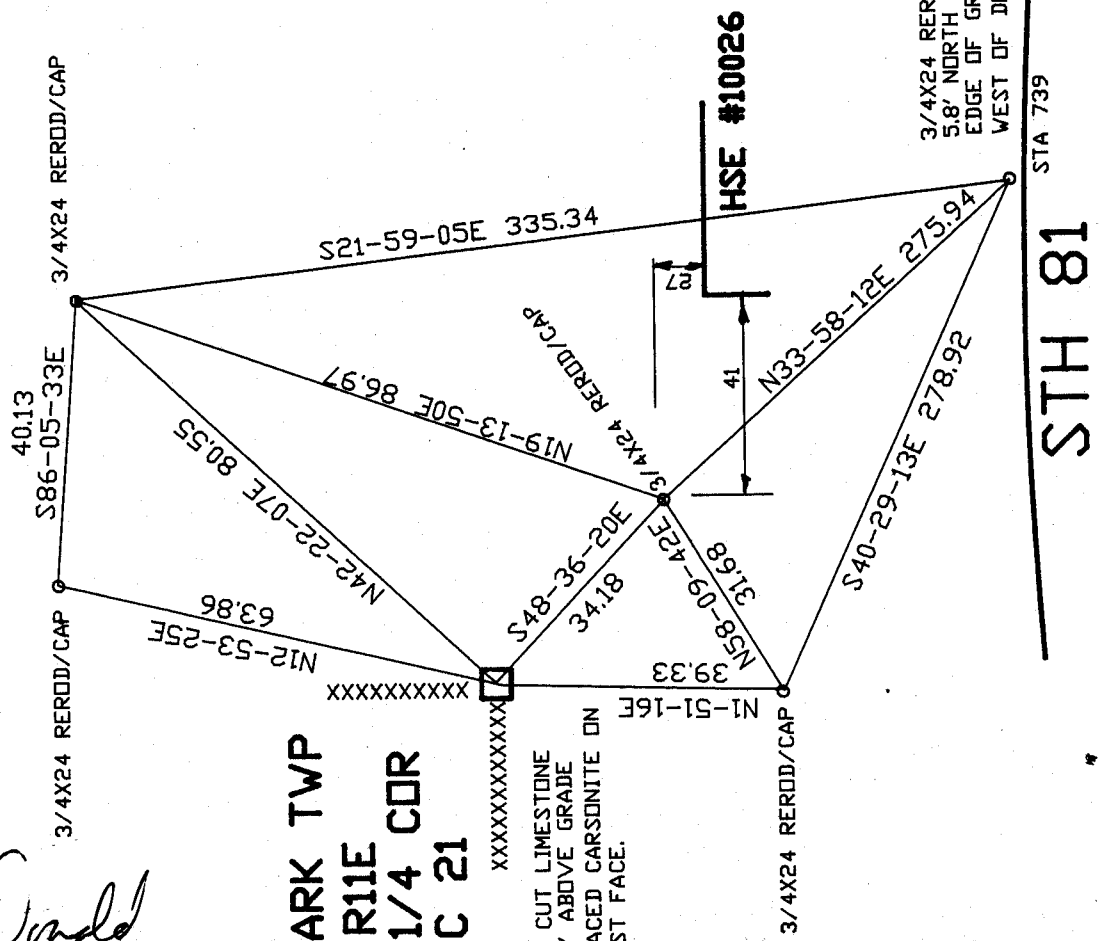
CORNER CODE R-11

A-E 7.08 REQUIREMENT

*Donald
Bauer*
EMBOSSED
SEAL
7-02-01

NEWARK TWP
T1N R11E
S 1/4 COR
SEC 21

XXXXXXXXXXXX
FD CUT LIMESTONE
0.5' ABOVE GRADE
PLACED CARSONITE ON
EAST FACE.



R-11

