

Paper weight-110# (minimum)

Black nonfading ink required

U.S. PUBLIC LAND SURVEY MONUMENT RECORD

For Public Land Survey Corners In:

WI ADMINISTRATIVE CODE A-E 7.08 REQUIREMENT

T. 4 N. R. 12 E. 4th P.M.

REV 10/23/2004

USMONREC.DWG

CORNER CODE INDEX

1	2	3	4	5	6	7	8	9	10	11	12	13	14	15	16	17	18	19	20	21	22	23	24	25	
A																									A
B	6					5					4					3				2				1	B
C																									C
D																									D
E																									E
F																									F
G	7					8					9					10				11				12	G
H																									H
J																									J
K																									K
L	18					17					16					15				14				13	L
M																									M
N																									N
O																									O
P	19					20					21					22				23				24	P
Q																									Q
R																									R
S																									S
T	30					29					28					27				26				25	T
U																									U
V																									V
W																									W
X	31					32					33					34				35				36	X
Y																									Y
Z																									Z

FULTON TWP

ROCK COUNTY WI

IF AVAILABLE

ROCK COUNTY COORDINATES PREFERRED

North _____ Elev. _____

East _____

Hor. Datum _____ Vert. Datum _____

LATITUDE _____ ELLIPS. HT. _____

LONGITUDE _____

NAD83(91) _____ NETWORK ADJ. YR _____

GPS (X) _____ TRAVERSE (X) _____

BASED ON THE FOLLOWING CONTROL:

PLACE MONUMENT SYMBOL AT PROPER LOCATION ON ABOVE INDEX

CORNER MONUMENT

WITNESS MONUMENT

BEARINGS ARE BASED ON: _____

FIELD BOOK _____ PAGE # _____

SHEET 1 OF 3

SHOW A PLAN VIEW DRAWING DEPICTING THE CORNER MONUMENT AND SURROUNDING PHYSICAL FEATURES, INCLUDING THE EXCAVATION AREA AND DEPTH.

PLANNING & ZONING COMMITTEE ADOPTED THIS FORM ON 12/2/1982

CORNER CODE R-17

FU589 ^

(B) Describe any record evidence, monument evidence, occupational evidence, testimonial evidence or any other material evidence you considered, and whether the monument was found or placed.

- 1836 (AUG) BURNHAM EAST RANDOM BETWEEN SECS 22 & 27
5287.26 INT EAST BOUNDARY 36.96' N GOOD 2ND RATE W &
BUR OAK OPENINGS BROKEN
WEST CORRECTED BETWN SECS 22 & 27
NO STATIONS
2643.30 SET 1/4 SEC POST BUR OAK 14 S3E 528'? NO OTHER
BEARING
5058.9 BUR OAK 12 IN DI
5287.26 TO CORNERS
- 1836 (JULY 11) BURNHAM NORTH BETWEEN SECTIONS 22 & 23
676.5 BUR OAK 12 IN DI
2640 SET 1/4 SEC POST YELLOW OAK 16 S79W 11.22'
BUR OAK 12 S25 1/2E 37.62'
4170.54 BUR OAK 8 IN DI
5280 SET POST COR TO 14,15,22,23
YELLOW OAK 24 N53W 37.62' W. OAK 12 S20E
11.22' FIRST RATE W. & BUR OAK OPENINGS BUT
RATHER BROKEN
- 1836 (JULY 11) BURNHAM NORTH BETWEEN 26 & 27
NO STATIONS
2640 SET 1/4 SEC POST BUR OAK 16 S49W 24.42' BUR
OAK 16 N34E 56.1'
2846.58 BUR OAK 8 IN DI
5280 SET POST COR TO 22,23,26, 27 BUR OAK 10 S36E
21.12' BUR OAK 12 N47 1/2W 62.04' FIRST RATE
BUR OAK OPENING
- 1836 (JULY 11) BURNHAM EAST RANDOM BETW SECS 23 & 26
5270.1 INT EAST BDY 19.8' NORTH
WEST 1/2 FIRST RATE BUR OAK OAK OPENINGS
GENTLY ROLLING- EAST 1/2 GOOD 2ND RATE W & BUR
OAK OPENINGS BEING BROKEN
WEST CORRECTED BETWN SEC 23 & 26
2634.72 SET 1/4 SEC POST BUR OAK 12 N24W 19.8' BUR OAK
12 S70E 11.88'
4660.26 BUR OAK 10 IN DI
5270.1 TO CORNERS JULY 11 1836
- 1939 DOT #4724 US 51 STATES NOTHING ABOUT MON.
1969 DOT #11190 CTH M STATES NOTHING ABOUT MON. 1875' TO
PT 104+86.88
- 196? SHIMEALL #1365 @ STONE @ N 1/4 COR SEC 26 FROM N/S
1/16TH LINE TO NORTH LINE OF SEC 26 ANGLE 89-43-30.
COMMENCING @ N 1/4 COR SEC 26 THENCE WEST ALONG SEC
LINE 306.00 TO LOT CORNER, THENCE WEST 256.00 TO LOT
CORNER, THENCE WEST 256.00 TO LOT CORNER.
- 1972 LEE VOL 4 PG 576 DUG & FD NOTHING. SET ACCORDING TO
OCCUPATION & ON E/W FENCE LINE WHICH FELL HALFWAY
BETWEEN N & S CORNERS. 2653.17 TO E 1/4 COR SEC 22 &
2653.17 TO E 1/4 COR SEC 27. REFERENCED SAME.
- 1972 LEE #1388 LEGEND SHOWS PIPE SET. N85-23-55E 2650.67
TO N 1/4 COR SEC 26, N85-42-19E 2635.88 FROM N1/4 COR
SEC 26 TO NE COR SEC 26, S4-09-51E 2648.27 FROM NW
COR SEC 26 TO W 1/4 COR SEC 26, S4-01-39E 2640.14 FROM
W 1/4 COR SEC 26 TO SW COR SEC 26. ANGLE 90-29-24 @ NW
COR SEC 26 FROM N 1/4 COR SEC 26 TO W 1/4 COR SEC 26.
ANGLE 179-55-24 @ W 1/4 COR SEC 26 FROM SW TO NW COR
SEC 26.
- 1972 SHIMEALL CSM VOL 2 PG 312 PIPE. SOUTHERLY 1324.30 TO
1/16TH COR. ANGLE 89-37-30 @ NE COR SEC 27 FROM EAST
LINE OF SEC 27 TO NORTH LINE OF SEC 27. LOT COR 33.00
WEST OF SEC COR. @ ANGLE 89-37-30
- 1974 LEE VOL 5 PG 20 VOL 4 PG 576 2653.18 TO N 1/4 COR SEC
27, 2648.23 TO E 1/4 COR SEC 27, ANGLE 89-42-37 @ NE COR

Donald Brunes

9-12-07

FU589

SEC 27 FROM E 1/4 COR SEC 27 TO N 1/4 COR SEC 27, 179-55-14 @ E 1/4 COR SEC 27 FROM SE COR SEC 27 TO NE COR SEC 27 & ANGLE 179-17-07 @ N 1/4 COR SEC 27 FROM NE COR SEC 27 TO NW COR SEC 27

1976 WOODMAN GSM VOL 6 PG 262 C.I. WEST 1326.59 TO 1/16TH COR

1977 BARNES VOL 5 PG 288 SHOWS REC DISTANCES

1979 WOODMAN GSM VOL 9 PG 7 C.I.

1980 WOODMAN GSM VOL 10 PG 119 C.I. 1326.59 EAST OF 1/16TH COR

1981 BARNES VOL 6 PG 211 FD C.I. 0.3' DEEP

1982 BARNES VOL 6 PG 260 FD CI. MON. TIED INTO AERO-METRIC PHOTO CONTROL ELEV 883.8 289,045.92; 2,254,264.99

1985 COMBS CSM VOL 12 PG 115 C.I. 986.64 SOUTH OF SOUTH R/W LINE OF USH 51

1987 COMBS CSM VOL 13 PG 82 CI.

1993 COMBS CSM VOL 16 PG 241 C.I.

1998 WOODMAN GSM VOL 21 PG 70 C.I. 1326.59 EASTERLY OF 1/16TH COR.

1999 COMBS CSM VOL 22 PG 441 FD C.I. 2646.67 TO E 1/4 COR SEC 22 & ANGLE 89-35-35 @ E 1/4 COR SEC 22 FROM SE COR SEC 22 TO COMPUTED POSITION OF GEN. OF SEC 22

FD CI MON. 0.3' DEEP.

C) Was the corner restored through acceptance of (1) an obliterated evidence location, or, (2) a found perpetuated location?

ACCEPTED FD CI

D) Describe any material discrepancy between the location of the corner as restored or reestablished and the location of that corner as previously restored or reestablished by distance and direction. Show the discrepancy on the plan view drawing under (a), above. Show the distances between the corner as previously restored or reestablished and (1) the corner as restored or reestablished, and (2) to at least 4 of the witness monuments shown on the drawing in (a), above.

NONE

(E) Was the corner reestablished through lost corner proportionate methods? If so, show the method, including the directions and distances to other public land survey corners used as evidence or used for proportioning the corner location.

I, **Donald Barnes**, hereby certify that the corner location as identified by the corner code index was determined by me under my direction and control and that this U.S. Public Land Survey Monument Record is correct and complete to the best of my knowledge and belief.

Seal

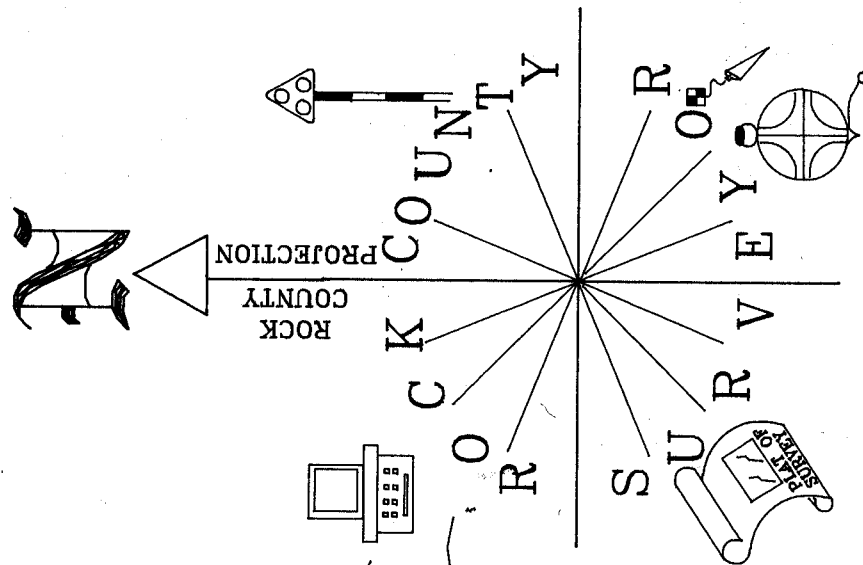

Emboss

9-12-07

SHEET 2 OF 3

CORNER CODER-R-17

A.E. 7.08 REQUIREMENT

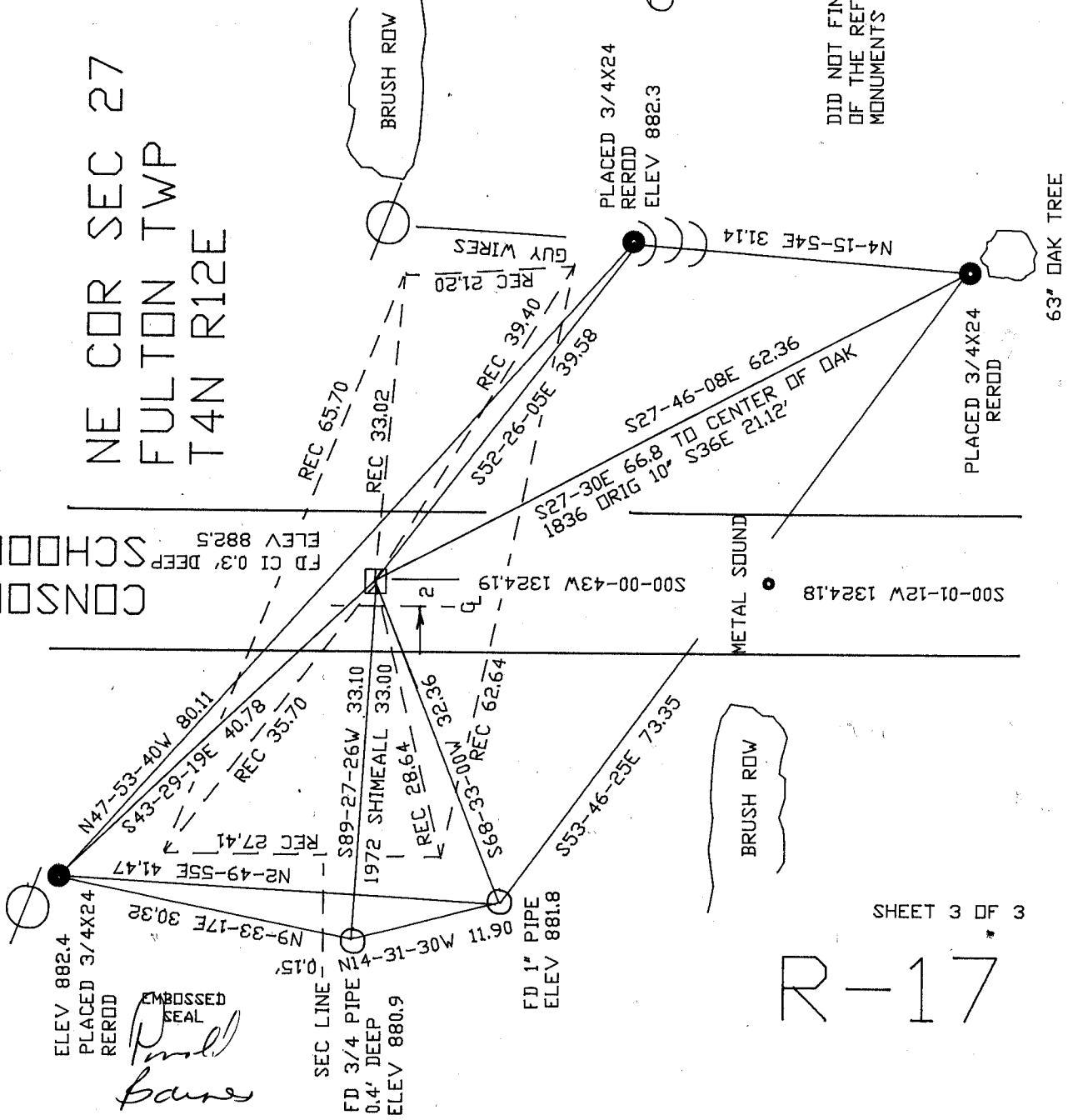


NOT TO SCALE
 OBSERVATION SHEET #589
 PLACED 3/4X24 REROD
 OLD TIES VOL 4-576

DID NOT FIND ANY OF THE REFERENCE MONUMENTS

NE COR SEC 27
 FULTON TWP
 T4N R12E

CONSOLIDATED SCHOOL RD



SHEET 3 OF 3

R-17

EMBOSSED SEAL
Paul Barnes
 9-12-07