

U.S. PUBLIC LAND SURVEY MONUMENT RECORD

For Public Land Survey Corners in:

WI ADMINISTRATIVE CODE A-E 7.08 REQUIREMENT

T. 4 N., R. 12 E 4th P.M.

CORNER CODE INDEX

	1	2	3	4	5	6	7	8	9	10	11	12	13	14	15	16	17	18	19	20	21	22	23	24	25
A																									
B																									
C																									
D																									
E																									
F																									
G																									
H																									
I																									
J																									
K																									
L																									
M																									
N																									
O																									
P																									
Q																									
R																									
S																									
T																									
U																									
V																									
W																									
X																									
Y																									
Z																									

FULTON TWP
ROCK COUNTY, WI

IF AVAILABLE
ROCK COUNTY COORDINATES PREFERRED

North 288,806.50 Elev. _____

East 2,209,516.06

Hor. Datum NAD83(91) Vert. Datum _____

LATITUDE _____ ELLIPS. HT. _____

LONGITUDE _____

ELLIPS. DATUM
NAD83(91) _____ COUNTY _____ LIST _____

GPS (X) X TRAVERSE (X) _____

BASED ON THE FOLLOWING CONTROL:

FULTON CENTER GPS STA 3035
" " " AZ. MK. 303A

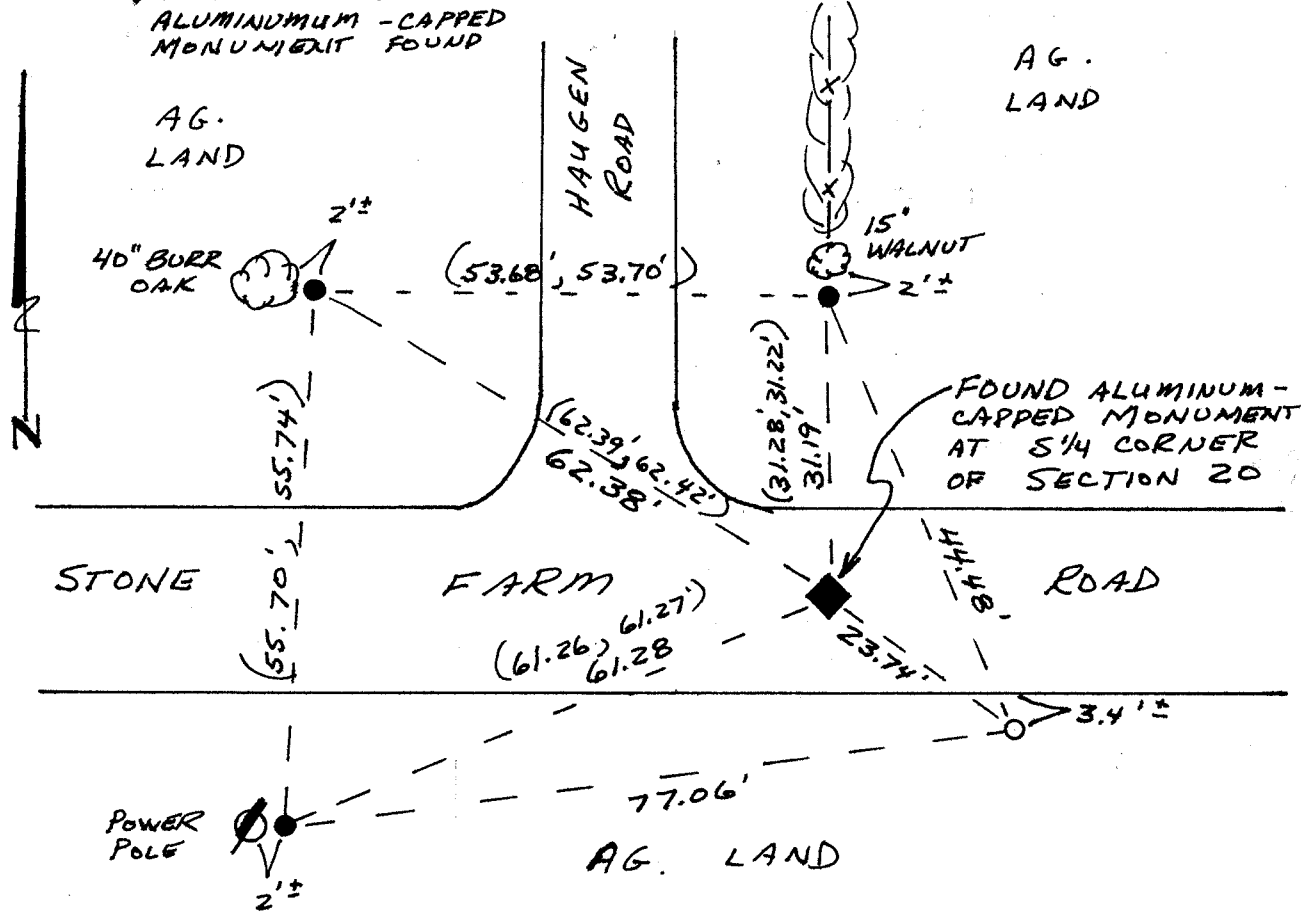
PLACE MONUMENT SYMBOL \blacklozenge AT PROPER LOCATION ON ABOVE INDEX

(a)

\blacklozenge CORNER MONUMENT
ALUMINUM-CAPPED
MONUMENT FOUND

WITNESS MONUMENT (SEE BELOW)

BEARINGS ARE BASED ON:



- = FOUND 3/4" I.D. IRON PIPE
- = SET 3/4" x 24" REBAR
- () = PREVIOUSLY RECORDED DIMENSION

DATE OF SURVEY: JUNE 20, 2001

FIELD BOOK _____ PAGE # _____ SHEET _____ OF _____

SHOW A PLAN VIEW DRAWING DEPICTING THE CORNER MONUMENT AND SURROUNDING PHYSICAL FEATURES, INCLUDING THE EXCAVATION AREA AND DEPTH.

PLANNING & ZONING COMMITTEE ADOPTED THE ABOVE FORM ON 12/2/1982

CORNER CODE R-007

B) Describe any record evidence, monument evidence, occupational evidence, testimonial evidence or any other material evidence you considered, and whether the monument was found or placed.

I FOUND THE ALUMINUM-CAPPED MONUMENT AT THE SOUTH 1/4 CORNER OF SECTION 20 T4N R12E AS SET BY DONALD BARNES ON SEPT. 22, 1981. SEE COUNTY SURVEYOR RECORDS VOL. 5?, P. 201 AND VOL. 4, P. 526. I ALSO FOUND THREE WITNESS MONUMENTS SET BY HUGH LEE ON AUGUST 11, 1971, WHICH ALSO APPEAR ON MR. BARNES TIE SHEET.

C) Was the corner restored through acceptance of (1) an obliterated evidence location, or, (2) a found perpetuated location?

A FOUND PERPETUATED LOCATION.

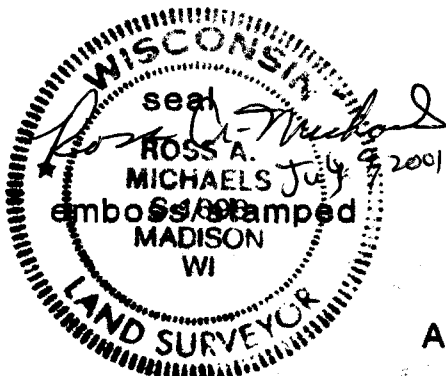
D) Describe any material discrepancy between the location of the Corner as restored or reestablished and the location of that corner as previously restored or reestablished by distance and direction. Show the discrepancy on the plan view drawing under (a), above. Show the distances between the corner as previously restored or reestablished and (1) the corner as restored or reestablished, and (2) to at least 4 of the witness monuments shown on the drawing in (a), above.

NO KNOWN DISCREPANCIES

E) Was the corner reestablished through lost corner proportionate methods? If so, show the method, including the directions and distances to other public land survey corners used as evidence or used for proportioning the corner location.

No.

I, Ross A. Michaels, hereby certify that the corner location as identified by the corner code index was determined by me under by direction and control and that this U.S. Public Land Survey Monument Record is correct and complete to the best of my knowledge and belief.



Number of included sheets _____

A-E 7.08 REQUIREMENT

CORNER CODE B-007