

Paper weight-110# (minimum)

Black nonfading ink required

# U.S. PUBLIC LAND SURVEY MONUMENT RECORD

For Public Land Survey Corners In:

T. 4 N. R. 12 E. 4th P.M.

WI ADMINISTRATIVE CODE A-E 7.08 REQUIREMENT

REV 10/23/2004

USMONREC.DWG

### CORNER CODE INDEX

A	1	2	3	4	5	6	7	8	9	10	11	12	13	14	15	16	17	18	19	20	21	22	23	24	25	A
B																										B
C																										C
D																										D
E																										E
F																										F
G																										G
H																										H
J																										J
K																										K
L																										L
M																										M
N																										N
O																										O
P																										P
Q																										Q
R																										R
S																										S
T																										T
U																										U
V																										V
W																										W
X																										X
Y																										Y
Z																										Z

FULTON TWP  
ROCK COUNTY WI

IF AVAILABLE  
ROCK COUNTY COORDINATES PREFERRED

North \_\_\_\_\_ Elev. \_\_\_\_\_

East \_\_\_\_\_

Hor. Datum \_\_\_\_\_ Vert. Datum \_\_\_\_\_

LATITUDE \_\_\_\_\_ ELLIPS. HT. \_\_\_\_\_

LONGITUDE \_\_\_\_\_

NAD83(91) \_\_\_\_\_ NETWORK ADJ. YR \_\_\_\_\_

GPS (X) \_\_\_\_\_ TRAVERSE (X) \_\_\_\_\_

BASED ON THE FOLLOWING CONTROL:

PLACE MONUMENT SYMBOL  AT PROPER LOCATION ON ABOVE INDEX

CORNER MONUMENT

WITNESS MONUMENT

BEARINGS ARE BASED ON: \_\_\_\_\_

FIELD BOOK \_\_\_\_\_ PAGE # \_\_\_\_\_

SHEET 1 OF 3

SHOW A PLAN VIEW DRAWING DEPICTING THE CORNER MONUMENT AND SURROUNDING PHYSICAL FEATURES, INCLUDING THE EXCAVATION AREA AND DEPTH.

PLANNING & ZONING COMMITTEE ADOPTED THIS FORM ON 12/2/1982

CORNER CODE P-17

FU578 ^

(B) Describe any record evidence, monument evidence, occupational evidence, testimonial evidence or any other material evidence you considered, and whether the monument was found or placed.

- 1836 (JULY 11) BURNHAM NORTH BETWEEN SECTIONS 22 & 23  
676.5 BUR OAK 12 IN DI  
2640 SET 1/4 SEC POST YELLOW OAK 16 S79W  
11.22' BUR OAK 12 S25 1/2E 37.62'  
4170.54 BUR OAK 8 IN DI  
5280 SET POST COR TO 14, 15, 22, 23  
YELLOW OAK 24 N53W 37.62' W. OAK 12 S20E  
11.22' FIRST RATE W. & BUR OAK OPENINGS  
BUT RATHER BROKEN
- 1846 STEBBINS TWP RD BK 1 PG 7 BEGINNING AT A POINT ON THE  
SECTION LINE BETWEEN SECTION 24 & 25 T4R12E 1518' EAST  
OF THE NW COR OF SEC 25, THENCE WEST ON SECTION LINE  
621.06'; THENCE NB 1/2W 396', N60 3/4W 528'; THENCE  
N73 1/2W 487.74'; THENCE NB5 1/2W 726'; THENCE S88 1/2W  
759'; THENCE NB4 1/2W 615.78'; THENCE S84 1/2W 386.1';  
THENCE N51 1/2W 594'; THENCE N75W 2300.1' TO THE  
SECTION LINE BETWEEN 22 & 23 803.22' SOUTH OF THE 1/4  
POST [E 1/4 COR SEC 22] ON SAID LINE AND THE WHOLE  
LENGTH OF THE RD IS 7,413.78'. COURSE GIVEN ACCORDING  
TO THE TRUE MERIDIAN VARIATION OF NEEDLE 7 3/4 [CTH M]
- 1861 RUGER VOL 1 PG 154 SET HARD HEAD 13X6X6 &  
SURROUNDED IT WITH 4 SMALL HARDHEADS. VAR 7-52  
2642.64 TO CEN SEC 22 5285.28 TO W 1/4 COR SEC 22
- 1968 THOM #1319 FD 3HH. SET 1" PIPE IN CENTER
- 1968 THOM #3397 FD 3 HH STONES SET 1" PIPE.
- 1971 LEE VOL 4 PG 522 PIPE OVER STONE BY HLC. JUST NORTH &  
EAST OF INT. OF HURD RD & CTH M
- 1972 LEE VOL 4 PG 576 FD 1" IRON PIPE AT COR 2653.17 TO SE  
COR SEC 22
- 1978 BARNES VOL 5 PG 472 2643.47 TO CEN SEC 22, 2656.86 TO  
NE COR SEC 22, ANGLE 90-16-53 @ E 1/4 COR SEC 22 FROM  
CEN SEC 22 TO NE COR SEC 22, & ANGLE 89-12-52 @ NE COR  
SEC 22 FROM E 1/4 COR SEC 22 TO N 1/4 COR SEC 22
- 1978 WOODMAN CSM VOL 8 PG 233 FD 1" PIPE 2643.47 TO FD  
4"X4" STONE MON AT CEN OF SEC 22 & 477.06 EAST OF  
CENTER OF HURD RD.
- 1982 BARNES VOL 6 PG 260 FD 1 1/4X36" PIPE. REPLACED WITH  
BERNTSEN W-1-C POLY MON. ALSO SET CARSONITE POST. TIED  
TO PHOTO CONTROL EST. BY AERO-METRIC. ELEV. 894.6'  
291,692.18; 2,254,233.42
- 1985 COMBS CSM VOL 12 PG 115 ALUM.
- 1987 COMBS CSM VOL 13 PG 82 C.I. MON 774.08 NORTH OF  
CENTER OF CTH M.
- 1993 COMBS CSM VOL 16 PG 241 82 C.I. MON 774.08' NORTH OF  
CENTER OF CTH M.
- 1994 COMBS #9540 ANGLE OF 89-12-45 @ NE COR  
SEC 22 FROM NE COR SEC 22 TO N 1/4 COR SEC 22, 2657.20  
TO NE COR SEC 22
- 1999 COMBS CSM VOL 22 PG 441 FD ALUM. N89-43-45W 2643.12  
TO COMPUTED CENTER OF SEC 22 & S0-40-40W 2646.67 TO  
SE COR SEC 22.
- 2001 KASTEN CSM VOL 24 PG 269 FD ALUM. MON. 2643.05 TO  
CENTER SEC 22

SHEET 1 OF 3  
CORNER CODE P-17

Donald Bane  
11/17/07

FU578

FD POLY/CARSONITE. CARSONITE IS 0.5' EAST OF POLY.

C) Was the corner restored through acceptance of (1) an obliterated evidence location, or, (2) a found perpetuated location?

ACCEPTED FD POLY. MON.

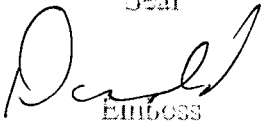
D) Describe any material discrepancy between the location of the corner as restored or reestablished and the location of that corner as previously restored or reestablished by distance and direction. Show the discrepancy on the plan view drawing under (a), above. Show the distances between the corner as previously restored or reestablished and (1) the corner as restored or reestablished, and (2) to at least 4 of the witness monuments shown on the drawing in (a), above.

NONE

(E) Was the corner reestablished through lost corner proportionate methods? If so, show the method, including the directions and distances to other public land survey corners used as evidence or used for proportioning the corner location.

I, **Donald Barnes**, hereby certify that the corner location as identified by the corner code index was determined by me under my direction and control and that this U.S. Public Land Survey Monument Record is correct and complete to the best of my knowledge and belief.

Seal

  
EMBLOSS

R Barnes

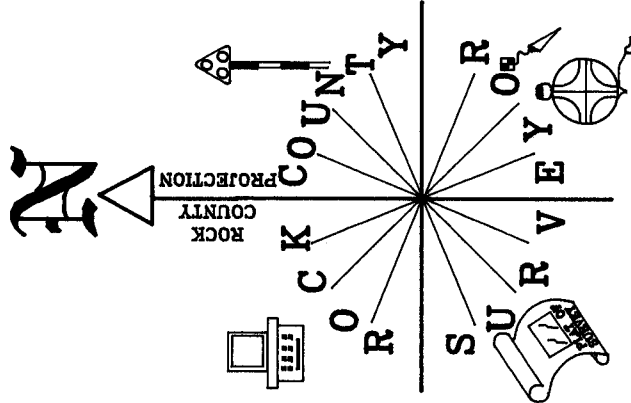
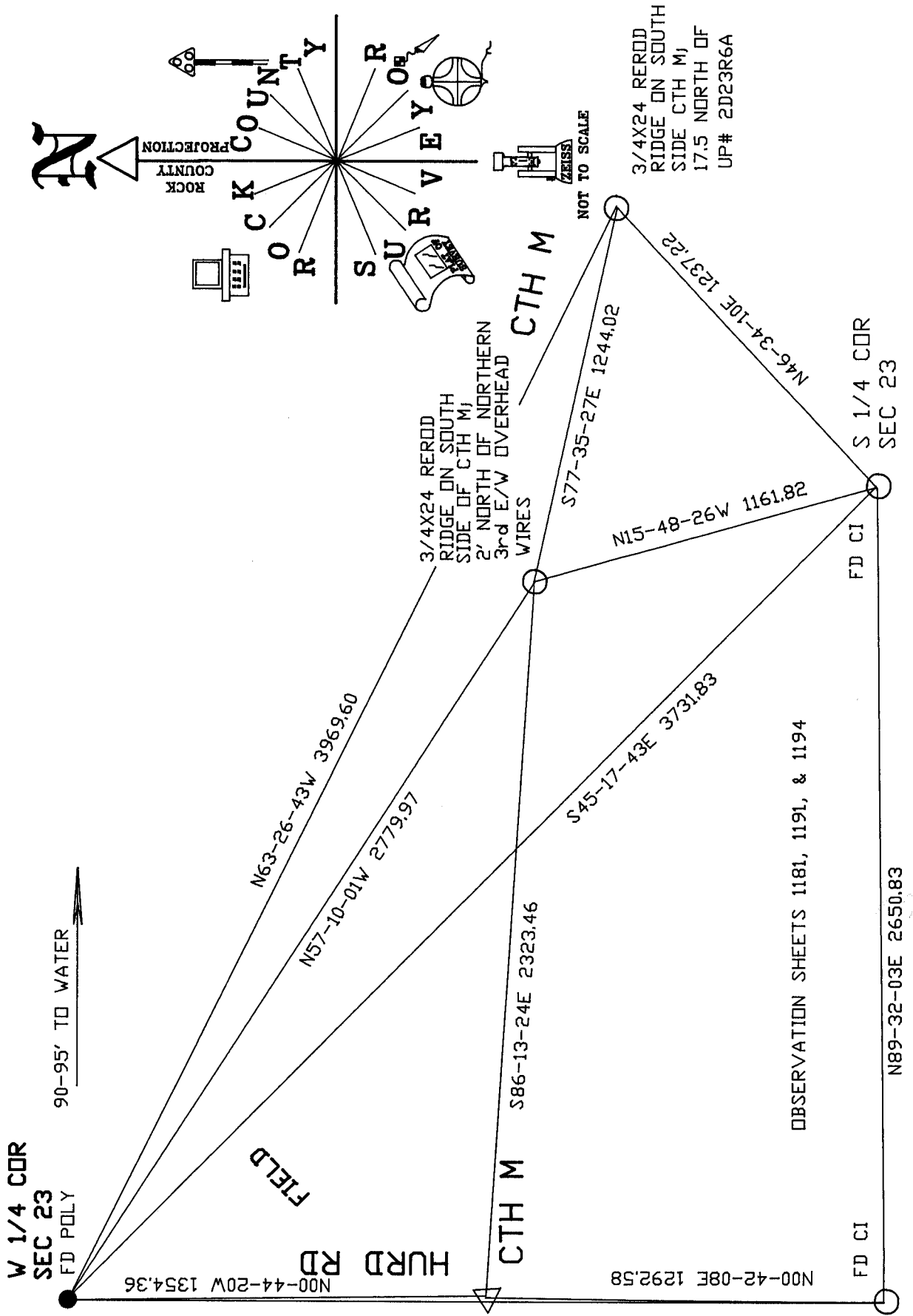
11/17/07

SHEET 2 OF 3

CORNER CODE

**P-17**

A.E. 7.08 REQUIREMENT



3/4X24 REROD  
RIDGE ON SOUTH  
SIDE CTH M,  
17.5 NORTH OF  
UP# 2D23R6A

NOT TO SCALE

472-479 TO CENTER  
OF HURD RD

770-775 TO CENTER OF CTH M

HURD RD

STH 51

*Ronald Barnes*  
11/7/07  
EMBOSSED SEAL

DURA NAIL  
EAST PVTM EDGE  
HURD RD  
SW OF UP #2D23L14  
NORTH SIDE OF STH 51  
e INT. WITH  
HURD RD, CTH M, & STH 51

P-17