

# U.S. PUBLIC LAND SURVEY MONUMENT RECORD

For Public Land Survey Corners in the

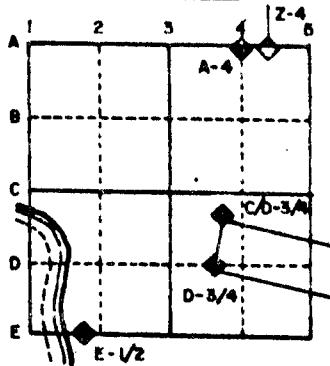
T. 4 N., R. 13 E.

## CORNER CODE INDEX

	2	3	4	5	6	7	8	9	10	11	12	13	14	15	16	17	18	19	20	21	22	23	24	25
A																								
B																								
C	6																							
D		5																						
E			4																					
F				3																				
G					2																			
H																								
I																								
J																								
K																								
L																								
M																								
N																								
O																								
P																								
Q																								
R																								
S																								
T																								
U																								
V																								
W																								
X																								
Y																								
Z																								

PLACE MONUMENT SYMBOL (◆) AT PROPER LOCATION ON ABOVE INDEX

### EXAMPLE



MILTON TWP  
ROCK COUNTY WI

IF AVAILABLE  
STATE PLANE COORDINATES

North (Y) \_\_\_\_\_ Eleve. (Z) \_\_\_\_\_  
 East (X) \_\_\_\_\_ Zone \_\_\_\_\_  
 Hor. Datum \_\_\_\_\_ Vert. Datum \_\_\_\_\_

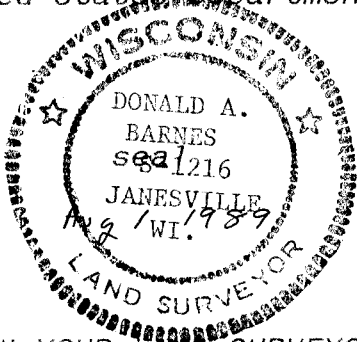
(c.)

◆ CORNER MONUMENT

○ WITNESS MONUMENT

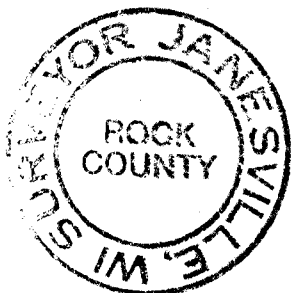
I, Donald Barnes, hereby certify that the corner points as identified by the corner code index were, in a field survey on, Donald Barnes Aug 1989 established, re-established, monumented, re-monumented, recovered or restored as expressed below and in conformance with the regulations and rules as required in the current manual of survey instructions of the United States Department of Interior, Bureau of Land Management.

BEARINGS ARE BASED ON:



AFFIX YOUR LAND SURVEYOR SEAL

COUNTY SURVEYOR FILING DATA  
 Date of computer entry \_\_\_\_\_  
 Date microfilmed \_\_\_\_\_  
 Number of included sheets 2  
 CORNER CODE



MICROFILMED

SHEET 1 OF 3

CORNER CODE: P 17

(B) Describe any record evidence, monument evidence, occupational evidence, testimonial evidence or any other material evidence you considered, and whether the monument was found or placed.

- 1871 RUGER REMONUMENTATION FIELD NOTES. ON A VAR OF 6-15 AT 2652.87 INTERSECTED 1/4 LINE AT 1/4 COR. FOUND LIMESTONE AT COR. NORTH ON WEST LINE OF NW 1/4 OF SEC 23 ON A VAR 7-10 AT 2650.56 INTERSECTED NORTH BOUNDARY LINE AT COR. PLACED CUT LIMESTONE.
- 1874 RUGER VOL 2 PG 166 FOUND STONE MONUMENT. USED TO SUBDIVIDE SECTION 23.
- 1875 RUGER VOL 2 PG 195 FOUND STONE MONUMENT & USED TO SUBDIVIDE SECTION 22. SHOWS 2625.48 TO CENTER OF SECTION 22, VAR 4-30 2650.56 TO NE CORNER OF SECTION 22, AND VAR OF 5-00 2651.22 TO THE SE CORNER OF SECTION 22. THE COMPUTED DISTANCE FROM THE CORNER TO THE INTERSECTION OF THE 1/4 LINES IS
- 1932 SUNNY VOL 3 PG 218 STATES THAT MONUMENTS ON THAT PAGE WERE DESTROYED DURING THE CONSTRUCTION OF HIGHWAY 26 IN 1926, AND ORDERED REPLACED BY THE COUNTY BOARD OF SUPERVISORS. PLACED CORNER BY POSSESSION. SET 1" PIPE 3' LONG IN CONCRETE PAV'MNT. .4' E OF THE CENTER OF SAME. SHOWS 2658.2 TO SE CORNER AND 2648.5 TO NE CORNER OF SECTION 22.
- 19?? SURVEYOR UNKNOWN VOL 5 PG 493 STATES THAT B.J. PLACED PIPE AS STATED IN VOL 3 PG 218. SHOWS A DISTANCE OF 2669.8 TO CENTER OF SECTION 23, 2625.48 TO CENTER OF SEC 22, 2651.22 TO SE COR SEC 22, AND 2650.56 TO NE COR. OF SEC 22.
- 1969 BATTERMAN JR. VOL 4 PG 416 FD PIPE JUST BELOW BLKTP. .4 E OF CENTER LINE IN LINE WITH 3/W FENCES AT E 1/4 CORNER SECTION 22. REFERENCED CORNER.
- 1983 BARNES FOUND PIPE AND CONNECTED TO TOWNSHIP PROJECT.

I FOUND SUNNY'S PIPE WHICH WAS BENT. I REFERENCED SAME. HIS PIPE IS NOT AT PROPORTIONATE MEASUREMENT WITH RUGER'S REMONUMENTATION DISTANCES. IT IS DIFFERENT BY 3.21'. SINCE I DID NOT FIND THE CUT LIMESTONE, I ACCEPTED SUNNY'S PIPE. IN MY OPINION I DID NOT HAVE ACCEPTABLE EVIDENCE TO REJECT SUNNY'S ACCEPTANCE OF THE E/W FENCE LINES.

C) Was the corner restored through acceptance of (1) an obliterated evidence location, or, (2) a found perpetuated location?

CORNER WAS RESTORED THROUGH ACCEPTANCE OF AN OBLITERATED EVIDENCE LOCATION.

D) Describe any material discrepancy between the location of the corner as restored or reestablished and the location of that corner as previously restored or reestablished by distance and direction. Show the discrepancy on the plan view drawing under (a), above. Show the distances between the corner as previously restored or reestablished and (1) the corner as restored or reestablished, and (2) to at least 4 of the witness monuments shown on the drawing in (a), above.

(E) Was the corner reestablished through lost corner proportionate methods? If so, show the method, including the directions and distances to other public land survey corners used as evidence or used for proportioning the corner location.

# U.S. PUBLIC LAND SURVEY MONUMENT RECORD

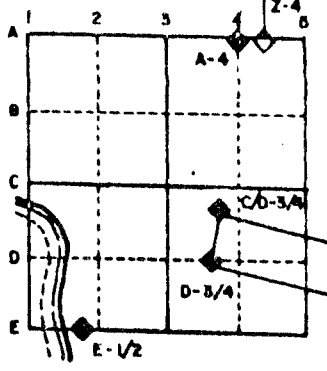
For Public Land Survey Corners in the  
T. 4 N., R. 13 E.

## CORNER CODE INDEX

	1	2	3	4	5	6	7	8	9	10	11	12	13	14	15	16	17	18	19	20	21	22	23	24	25
A																									
B																									
C	6																								
D		5																							
E			4																						
F				3																					
G					2																				
H																									
I																									
J																									
K																									
L																									
M																									
N																									
O																									
P																									
Q																									
R																									
S																									
T																									
U																									
V																									
W																									
X																									
Y																									
Z																									

PLACE MONUMENT SYMBOL (◆) AT PROPER LOCATION ON ABOVE INDEX

### EXAMPLE



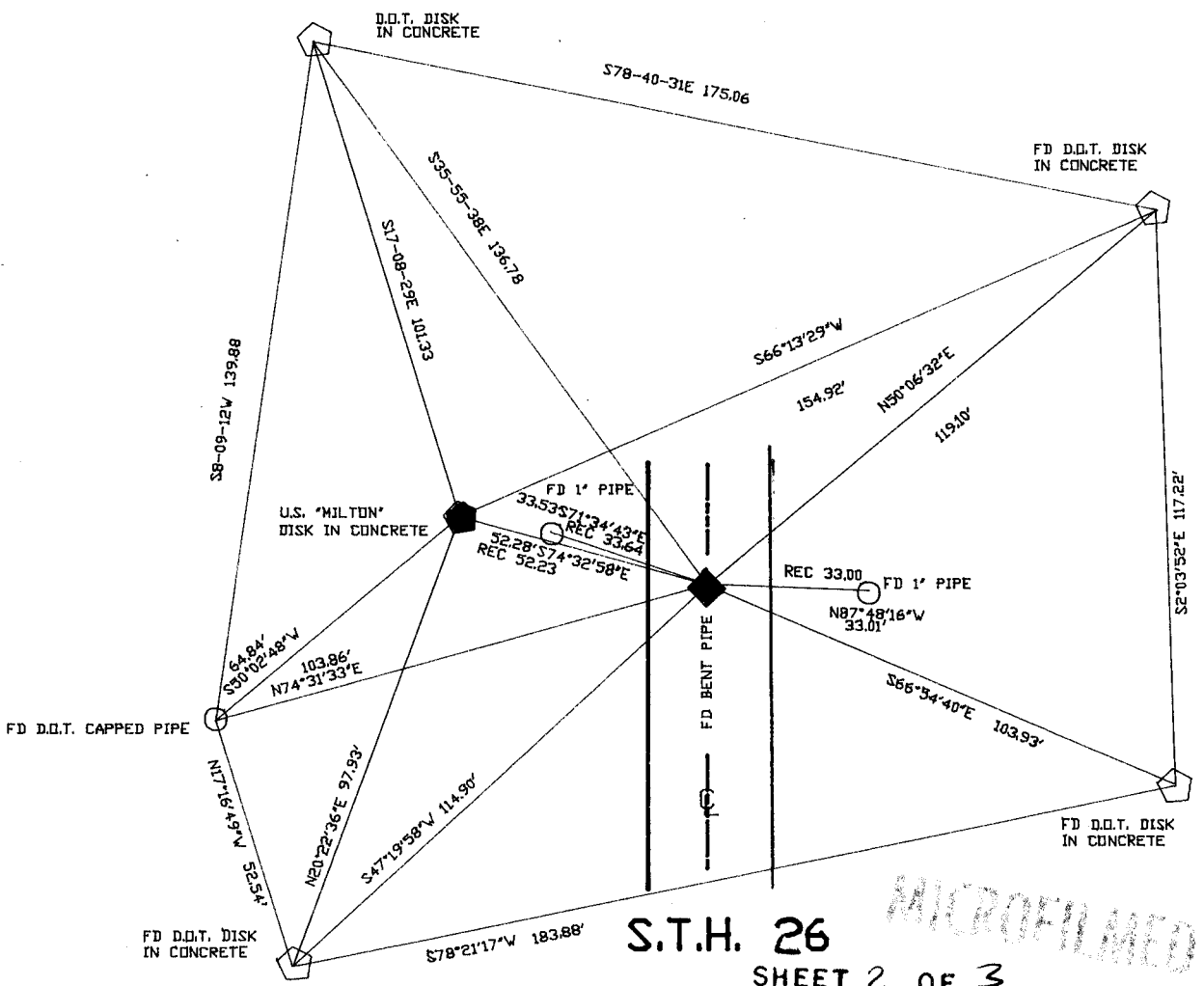
MILTON TWP  
ROCK COUNTY WI

### IF AVAILABLE STATE PLANE COORDINATES

North (Y) \_\_\_\_\_ Eleve. (Z) \_\_\_\_\_  
 East (X) \_\_\_\_\_ Zone \_\_\_\_\_  
 Hor. Datum \_\_\_\_\_ Vert. Datum \_\_\_\_\_

◆ CORNER MONUMENT      ○ WITNESS MONUMENT

1983 Township  
 BEARINGS ARE BASED ON: PROJECT



FIELD BOOK #2  
PG 54

S.T.H. 26  
SHEET 2 OF 3

CORNER CODE: P 17

I, Donald Barnes, hereby certify that the corner points as identified by the corner code index were, in a field survey on, August 1, 1989, established, re-established, monumented, re-monumented, recovered or restored as expressed below and in conformance with the regulations and rules as required in the current manual of survey instructions of the United States Department of Interior, Bureau of Land Management.



*Donald Barnes*

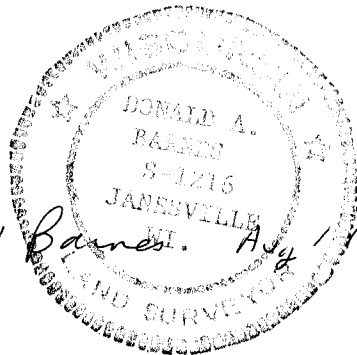
COUNTY SURVEYOR FILING DATA

Date of computer entry \_\_\_\_\_

Date microfilmed \_\_\_\_\_

Number of included sheets P17  
CORNER CODE

AFFIX YOUR LAND SURVEYOR SEAL



Donald Barnes, Aug 1, 1989

