

U.S. PUBLIC LAND SURVEY MONUMENT RECORD

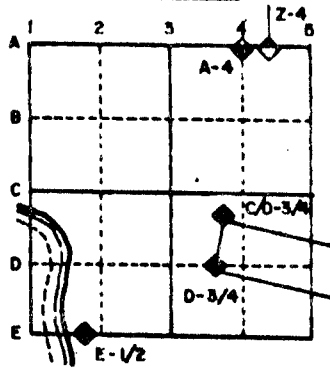
For Public Land Survey Corners in the
T. 4N., R. 13E.

CORNER CODE INDEX

	1	2	3	4	5	6	7	8	9	10	11	12	13	14	15	16	17	18	19	20	21	22	23	24	25
A																									
B																									
C	6																								
D		5																							
E			4																						
F				3																					
G					2																				
H																									
I																									
J	7																								
K		8																							
L			9																						
M				10																					
N					11																				
O						12																			
P							13																		
Q								14																	
R									15																
S										16															
T											17														
U												18													
V													19												
W														20											
X															21										
Y																22									
Z																	23								
																		24							
																			25						
																				26					
																					27				
																						28			
																							29		
																								30	
																									31
																									32
																									33
																									34
																									35
																									36

PLACE MONUMENT SYMBOL (◆) AT PROPER LOCATION ON ABOVE INDEX

EXAMPLE



MILTON TWP
ROCK COUNTY WI

IF AVAILABLE STATE PLANE COORDINATES

North (Y) _____ Eleve. (Z) _____
 East (X) _____ Zone _____
 Hor. Datum _____ Vert. Datum _____

(c.)

◆ CORNER MONUMENT

○ WITNESS MONUMENT

I, Donald Barnes, hereby certify that the corner points as identified by the corner code index were, in a field survey on, Donald Barnes Aug 1 1989, established, re-established, monumented, re-monumented, recovered or restored as expressed below and in conformance with the regulations and rules as required in the current manual of survey instructions of the United States Department of Interior, Bureau of Land Management.

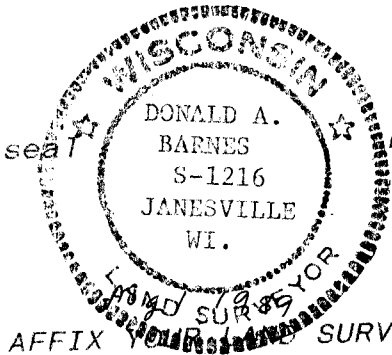
COUNTY SURVEYOR FILING DATA

Date of computer entry _____

Date microfilmed _____

Number of included sheets _____
CORNER CODE

BEARINGS ARE BASED ON:



AFFIX SURVEYOR SEAL

MICROFILMED

SHEET 1 OF 3

CORNER CODE: N15

(B) Describe any record evidence, monument evidence, occupational evidence, testimonial evidence or any other material evidence you considered, and whether the monument was found or placed.

- 1871 RUGER REMONUMENTATION FIELD NOTES. EAST ON NORTH LINE NE 1/4 SEC 22 ON A VAR 3-40 OFFSET SOUTH 20 LKS AT 2630.76 INTERSECTED EAST BOUNDARY 15 LKS SOUTH OF COR. FOUND REMAINS OF OLD STAKE AT CORNER ALSO FOUND STUMP OF B.T. VAR CORRECTED 3-36. 2630.75 TO N 1/4 CORNER OF SECTION 22, 286.86 TO N 1/4 CORNER OF SEC 23, 2650.56 TO W 1/4 CORNER OF SEC 23.
- 1874 RUGER VOL 2 PG 166 SHOWS STONE MONUMENT.
- 1875 RUGER VOL 2 PG 195 SHOWS STONE MONUMENT, 2630.76 TO N 1/4 COR SEC 22, AND 2650.56 TO E 1/4 COR SEC 22.
- 1879 RUGER VOL 2 PG 268 SHOWS MONUMENT.
- 1932 SUNNY VOL 3 PG 218 ESTABLISHED CORNER BY PROPORTIONATE MEASUREMENT E&W. & BY FENCE LINE N & S. SET 1" PIPE 3' LONG IN CONC. PAV'MNT. 1.75' E OF CENTERLINE. SHOWS TIES TO TREES AND FENCE. 2687.64 TO N 1/4 COR SEC 23 (FD CUT STONE), 1315.76 TO 16X8X7 HH SET BY RUGER IN 1875 AT N 1/16th CORNER OF NE 1/4 OF SECTION 22, AND 2648.5 TO E 1/4 COR OF SEC 22 (ESTABLISHED 1/4 CORNER BY POSSESSION. PLACED 1" PIPE 3' LONG IN CONCRETE PAV'MNT. 0.4' E OF THE CENTER OF SAME.)
- 1932 SUNNY VOL 3 PG 219 THIS MONUMENT IS THE SAME AS MON "D" ON PAGE 218. SHOWS A DISTANCE OF 5304.9 TO E 1/4 CORNER OF SECTION 15 (SET 1" IRON PIPE 2' LONG IN CONC. PAVEMENT BY PROPORTIONAL MEASUREMENT ON LINE FROM NE TO SE CORNERS OF SECTION 15)
- 19?? BATTERMAN VOL 5 PG 82 STATES SEE VOL 4 PG 416 AND SHOWS A DISTANCE OF 2651.10 TO W 1/4 COR SEC 14 AND 2686.92 TO SOUTH QUARTER CORNER OF SEC 14.
- 19?? VAR 5 PG 495 STATES THAT BJS SET 1X36 PIPE 1.75' EAST OF CENTER OF CONCRETE HIGHWAY WITH BEARING TREES. SHOWS 2687.64 TO STONE AT N 1/4 COR SEC 23, 1315.76 TO 1/16th CORNER TO THE WEST, 2650.56 TO W 1/4 CORNER OF SECTION 23.
- 1969 BATTERMAN JR. VOL 4 416 FOUND PIPE JUST BELOW BLKTP, 1.7E. OF CENTER OF PVMT AS SET BY B.JH. SUNNY (1932) REFERENCED CORNER.
- 1983 BARNES TOWNSHIP PROJECT. FOUND PIPE AND CONNECTED TO PROJECT.

WHILE STH 26 IS BEING RECONSTRUCTED I DUG A 10' DEEP HOLE. I FOUND A 1" PIPE AS REFERENCED AND JUST UNDER THE OLD CONCRETE, I FOUND A TACKED WOOD HUB. I DID NOT ACCEPT THE TACKED HUB FOR THE FOLLOWING REASONS:

- 1) THERE WERE NO RECORDS FOR THIS HUB.
- 2) THE FOUND IRON PIPE IS MORE IN HARMONY WITH RUGER'S REMONUMENTATION DISTANCES THAN THE HUB.

C) Was the corner restored through acceptance of (1) an obliterated evidence location, or, (2) a found perpetuated location?

ACCEPTED THE FOUND PERPETUATED LOCATION

D) Describe any material discrepancy between the location of the corner as restored or reestablished and the location of that corner as previously restored or reestablished by distance and direction. Show the discrepancy on the plan view drawing under (a), above. Show the distances between the corner as previously restored or reestablished and (1) the corner as restored or reestablished, and (2) to at least 4 of the witness monuments shown on the drawing in (a), above.

(E) Was the corner reestablished through lost corner proportionate methods? If so, show the method, including the directions and distances to other public land survey corners used as evidence or used for proportioning the corner location.

U.S. PUBLIC LAND SURVEY MONUMENT RECORD

For Public Land Survey Corners in the

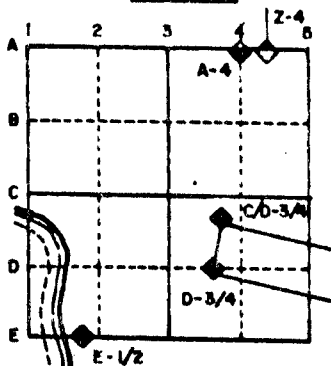
T. 4 N., R. 13 E.

CORNER CODE INDEX

	2	3	4	5	6
A					
B	6	5	4	3	2
C					
D					
E					
F					
G	7	8	9	10	11
H					
I					
J					
K					
L	18	17	16	15	14
M					
N					
O					
P	19	20	21	22	23
Q					
R					
S					
T	30	29	28	27	26
U					
V					
W					
X	31	32	33	34	35
Y					
Z					

PLACE MONUMENT SYMBOL (◆) AT PROPER LOCATION ON ABOVE INDEX

EXAMPLE



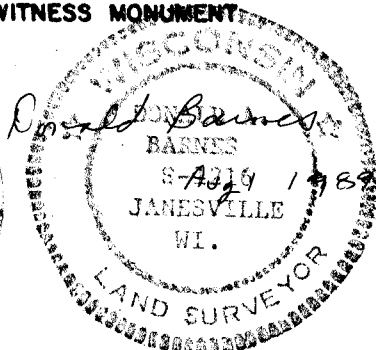
MILTON TWP
ROCK COUNTY WI

IF AVAILABLE
STATE PLANE COORDINATES

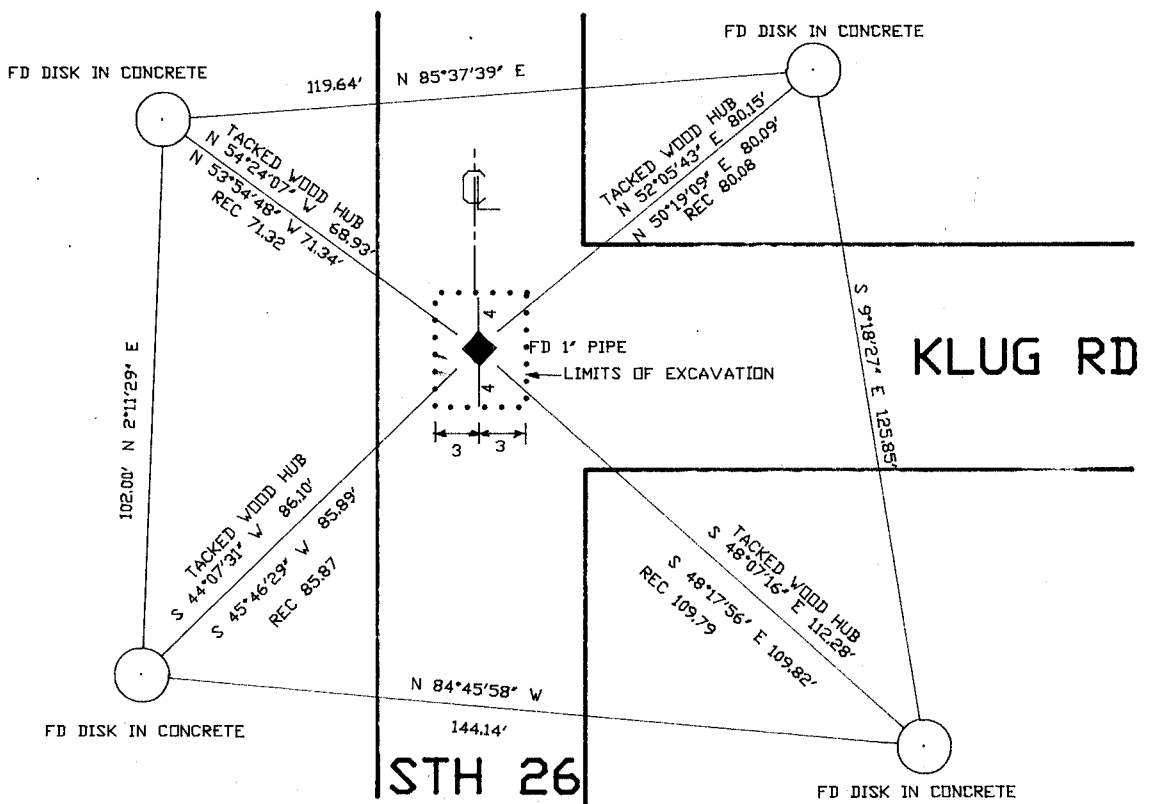
North (Y) _____ Eleve. (Z) _____
 East (X) _____ Zone _____
 Hor. Datum _____ Vert. Datum _____

◆ CORNER MONUMENT

○ WITNESS MONUMENT



BEARINGS ARE BASED ON: 1983 TOWNSHIP
PROJECT



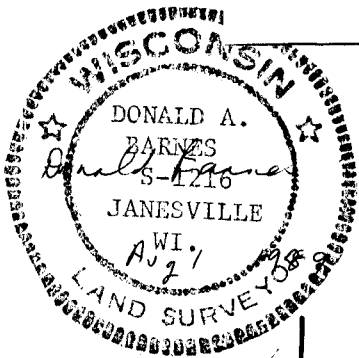
REC DISTANCES BY MEAD & HUNT

FIELD BOOK 2
PG 57, 61

MICROFILMED

SHEET 2 OF 3

CORNER CODE: N17



N 1/4 COR 548
SUNNY 1939 91-40-00

89-56-40
SUNNY 1939 90-13-00

N 1/4 COR 550

RUGER 1871 2629.44
SUNNY 1939 2683.20
BARNES 1983 S87-39-36E 2630.84

NE COR 549

RUGER 1871 2612.28
SUNNY 1939 2683.20
BARNES 1975 2688.54
BARNES 1983 S87-08-05E 2688.51
S87-06-28E 2684.96

SEC 15

SEC 14

RUGER 1871 2649.41
BARNES 1975 2651.10
BARNES 1983 S0-31-45W 2651.04
S0-34-00W 2651.58

CENTER

RUGER 1879 2650.89

558

WOODMAN 1975 2728.21

CENTER

RUGER 1871 2649.24
BARNES 1975 2651.10
BARNES 1983 S0-31-36W 2650.82
S0-34-00W 2651.41

SUNNY 1932 5304.90

568

NE COR

569

N 1/4 COR 570

RUGER 1871 2630.76
SUNNY 1932 1315.76
BARNES 1983 S87-46-24E 2630.54

RUGER 2686.86
SUNNY 1932 2687.64
BARNES 1975 2686.92
BARNES 1983 S87-24-11E 2686.95

SEC 22

SEC 23

RUGER 1871 2650.56
SUNNY 1932 2648.50
BARNES 1983 S0-32-28W 2648.85
N0-32-29E 2648.92

RUGER 1874 2627.67

N 1/4 COR

RUGER 1875 2640.33

578

CENTER

E 1/4 COR

N 17