

Paper weight-110# (minimum)

Black nonfading ink required

# U.S. PUBLIC LAND SURVEY MONUMENT RECORD

For Public Land Survey Corners In:

WI ADMINISTRATIVE CODE A-E 7.08 REQUIREMENT

T. 4 N. R. 12 E. 4th P.M.

REV 10/23/2004

USMONREC.DWG

### CORNER CODE INDEX

FULTON TWP

TWP

ROCK COUNTY WI

IF AVAILABLE

ROCK COUNTY COORDINATES PREFERRED

North \_\_\_\_\_ Elev. \_\_\_\_\_

East \_\_\_\_\_

Hor. Datum \_\_\_\_\_ Vert. Datum \_\_\_\_\_

LATITUDE \_\_\_\_\_ ELLIPS. HT. \_\_\_\_\_

LONGITUDE \_\_\_\_\_

NAD83(91) \_\_\_\_\_ NETWORK ADJ. YR \_\_\_\_\_

GPS (X) \_\_\_\_\_ TRAVERSE (X) \_\_\_\_\_

BASED ON THE FOLLOWING CONTROL:

1	2	3	4	5	6	7	8	9	10	11	12	13	14	15	16	17	18	19	20	21	22	23	24	25	
A																									A
B	6					5					4				3					2				1	B
C																									C
D																									D
E																									E
F																									F
G	7					8					9				10					11				12	G
H																									H
J																									J
K	18					17					16				15					14				13	K
L																									L
M																									M
N																									N
O																									O
P	19					20					21				22					23				24	P
Q																									Q
R																									R
S																									S
T	30					29					28				27					26				25	T
U																									U
V																									V
W																									W
X	31					32					33				34					35				36	X
Y																									Y
Z																									Z

PLACE MONUMENT SYMBOL  AT PROPER LOCATION ON ABOVE INDEX

CORNER MONUMENT

WITNESS MONUMENT

BEARINGS ARE BASED ON: \_\_\_\_\_

FIELD BOOK \_\_\_\_\_ PAGE # \_\_\_\_\_

SHEET 1 OF 3

SHOW A PLAN VIEW DRAWING DEPICTING THE CORNER MONUMENT AND SURROUNDING PHYSICAL FEATURES, INCLUDING THE EXCAVATION AREA AND DEPTH.

PLANNING & ZONING COMMITTEE ADOPTED THIS FORM ON 12/2/1982

CORNER CODE 4-17

FU558 ^

(B) Describe any record evidence, monument evidence, occupational evidence, testimonial evidence or any other material evidence you considered, and whether the monument was found or placed.

- 1834 (MAR/APR) HARRISON NORTH BETWEEN 14 & 15  
2226.84 LEAVE ROCK RIVER & ESTABLISHED MEANDER POST ON RIGHT BANK BEARINGS {BURR O B S85E 87.12' W.O. B N51E 71.94'} MARKED  
2392.5 TRAIL CRS E  
2640 QUARTER SEC COR BEARINGS {BUR O B S85E 87.12' W.O. B N51E 71.94' BURR O B W.O. B9} MARKED  
5280 COR TO SECS 10 11 14 15 {WO 24 N76W 161.04' HICHY 12 S63W 36.3' W.O. 18 N35E 69.3' W.O. 18 S88E 151.8' LAND ROLLING 2<sup>ND</sup> RATE AND SAME AS BEFORE.
- 1836 (AUG) BURNHAM NORTH BETWEEN SECTIONS 14 & 15  
T4N R12E  
1419 TRAIL @ NE & SW  
1815 TO LEFT BANK ROCK RIVER  
2272.38 INT RIGHT BANK 268.62' WEST OF M.P. GOOD 2<sup>ND</sup> RATE ? & VELION? OAK OPENINGS BROKEN  
SOUTH CORRECTED TO THE? SECS 14 & 15  
457.38 SET MP ON LEFT B. W OAK 12 N61 1/2 E 15.18' W. OAK 16 S21W 49.5' WHITE OAK 18 IN DIA
- 1871 RUGER VOL 2 PG 53 & #1234 FD STUMP OF SE BEARING TREE & REMAINS OF OLD STAKE SET SAND STONE 13X10X7 POINT UP. VAR 6-44 2638.68 TO NE COR SEC 15 & VAR 6-44 421.74 TO MP
- 1886 TWP RD BK 2 PG 3 BEGINNING AT A POINT 1320' SOUTH OF THE NE COR OF NE 1/4 OF SEC 10 AND RUNNING THENCE SOUTH ON THE SEC LINES BETWEEN 10 & 11 AND 14 & 15 TO THE ROCK RIVER; ALSO A STRIP OF LAND 4' WIDE COMMENCING AT THE NE COR OF N 1/2 OF NE 1/4 OF SEC 15 AND RUNNING SOUTH 330', THE SAME BEING AN ACCURATE SURVEY OF SAID HIGHWAY CAUSED BY US TO BE MADE. THE LINE OF SAID SURVEY IS THE CENTER OF SAID HIGHWAY AND THE SAME IS LAID OUT OF THE WIDTH 49.5'
- 19?? ELY 6-104 1317.76 TO E 1/16<sup>TH</sup> COR OF NE 1/4 SEC 15  
1980 BARNES VOL 6 PG 104 421.74 TO MP; 1319.12 TO E 1/16<sup>TH</sup> COR OF NE 1/4 SEC 15, 2638.14 TO NE COR SEC 15.  
1980 BARNES VOL 6 PG 107 DUG A 3'X3' HOLE 2.5' DEEP & FD NOTHING. COR WAS PROBABLY DESTROYED BY RD CONSTRUCTION. SET ALUM. MON. ON LINE WITH THE NE & E 1/16<sup>TH</sup> OF THE NE 1/4 CORNERS OF SEC 15. 2.5 EAST OF WEST PVMT EDGE.
- 1988 COMBS CSM VOL 13 PG 263 SURVEY ON THE E/W 1/4 LINE OF SEC 14. STATES NOTHING ABOUT MON.  
1995 KREBS CSM VOL 18 PG 172 ALUM. 2637.96 TO NE COR SEC 15  
1997 NORTHROP #8604 ALUM. 2638.05 TO NE COR SEC 15.  
1999 NORTHROP CSM VOL 22 PG 139 ALUM. MON. 2638.05 TO NE COR SEC 15  
2003 NORTHROP #10402 "ROCK RIVER PARK" BK10 PG52 47.72' NORTH OF NORTH R/W LINE OF CIRCLE DR. IN ROCK RIVER RD. ANGLE AT COR IS 180-00-00 FROM NE COR SEC 15 TO THE SOUTH ALONG THE EAST SIDE OF THE SE 1/4 SEC 15. STATES NOTHING ABOUT MON.  
2006 NORTHROP CSM 30-126 FD ALUM. 2638.11 TO NE COR SEC 15

SHEET 1 OF 3  
CORNER CODE L-17

11/07/07  
Donald Bacon

FU558

FD ALUM. MON.

©) Was the corner restored through acceptance of (1) an obliterated evidence location, or, (2) a found perpetuated location?

ACCEPTED FD ALUM.

D) Describe any material discrepancy between the location of the corner as restored or reestablished and the location of that corner as previously restored or reestablished by distance and direction. Show the discrepancy on the plan view drawing under (a), above. Show the distances between the corner as previously restored or reestablished and (1) the corner as restored or reestablished, and (2) to at least 4 of the witness monuments shown on the drawing in (a), above.

HOW DID HARRISON RUN THE WEST LINE OF SEC 14 IN APRIL OF 1834 WHEN THE SW COR OF SEC 14 WAS SET BY BURNHAM IN JULY 1836? BURNHAM FOUND THE MP THAT HARRISON PLACED ON THE RIGHT BANK BUT NOTHING WAS MENTIONED ABOUT ANY MONUMENT AT THE SW COR OF SEC 14 THAT HARRISON MAY HAVE PLACED.

(E) Was the corner reestablished through lost corner proportionate methods? If so, show the method, including the directions and distances to other public land survey corners used as evidence or used for proportioning the corner location.

I, **Donald Barnes**, hereby certify that the corner location as identified by the corner code index was determined by me under my direction and control and that this U.S. Public Land Survey Monument Record is correct and complete to the best of my knowledge and belief.

Seal

11/07/07

Emboss

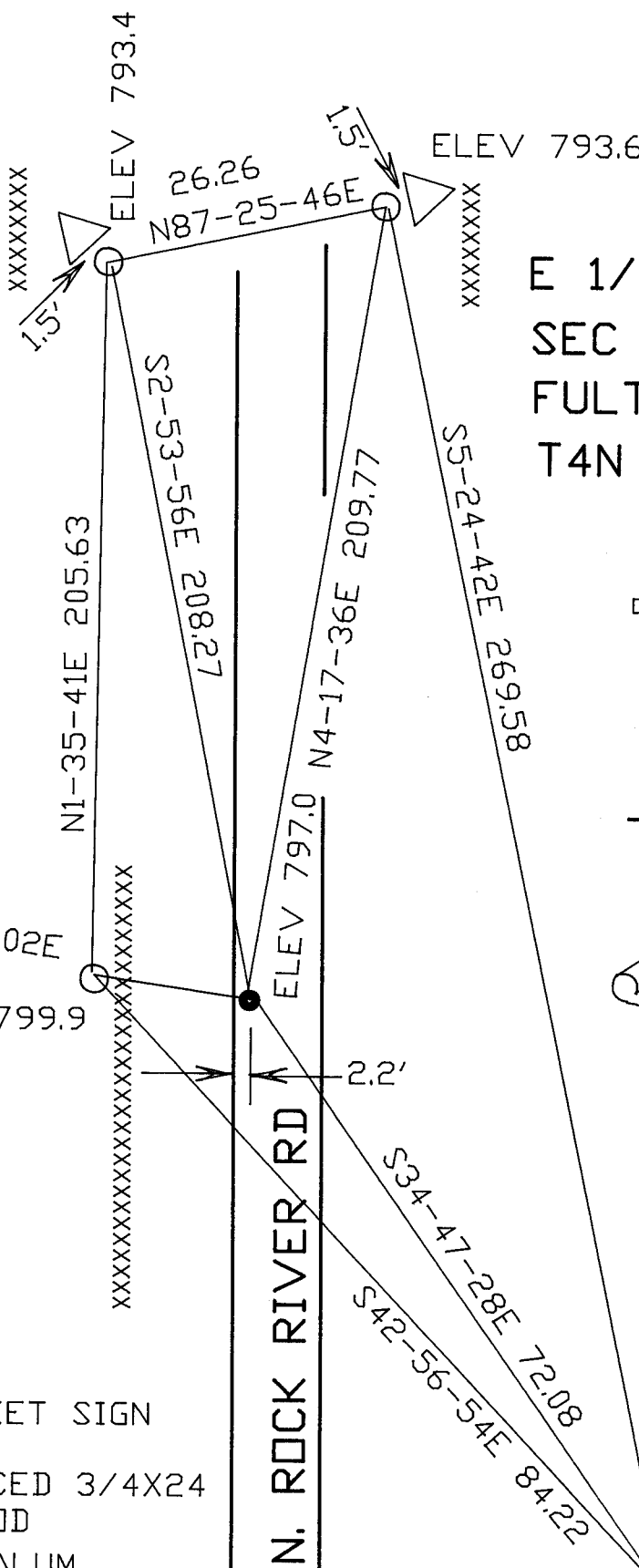
Donald Barnes

SHEET 2 OF 3

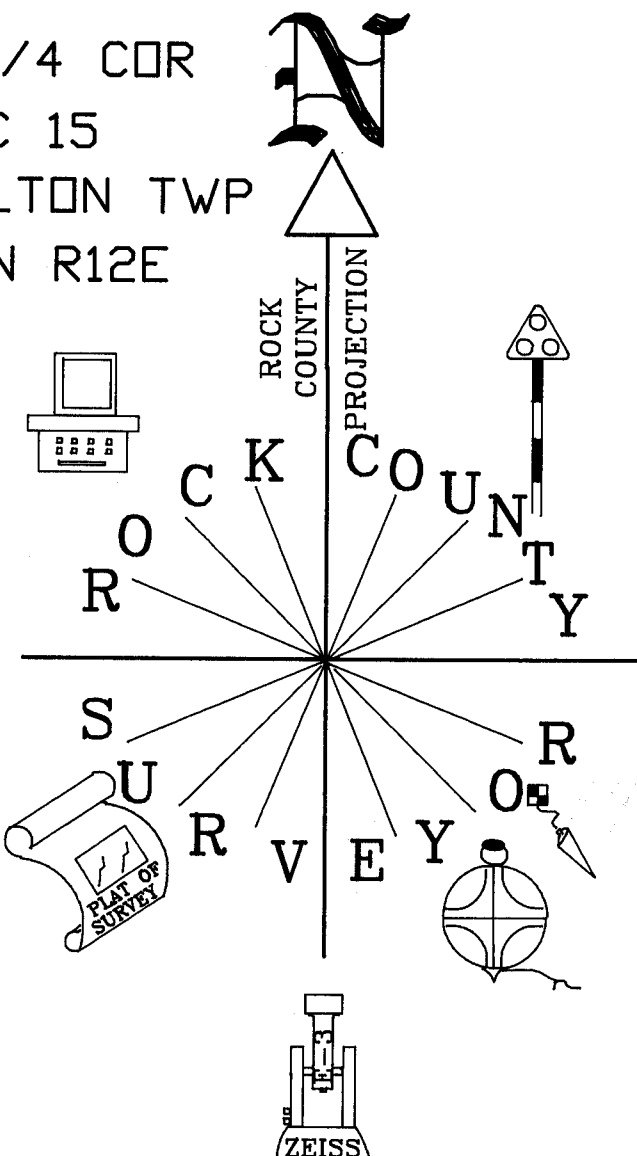
CORNER CODE

**L-17**

A.E. 7.08 REQUIREMENT



E 1/4 COR  
 SEC 15  
 FULTON TWP  
 T4N R12E



NOT TO SCALE  
 VERTICAL DATUM  
 BASED ON DIGITAL  
 PHOTO  
 OBSERVATION SHEET  
 #558

L-17

BUILDING

- △ STREET SIGN
- PLACED 3/4X24 REROD
- FD ALUM

SHEET 3 OF 3

ELEV 799.2  
 EMBOSSED  
 SEAL  
*Baines*  
 11/07/07