

U.S. PUBLIC LAND SURVEY MONUMENT RECORD

For Public Land Survey Corners in the

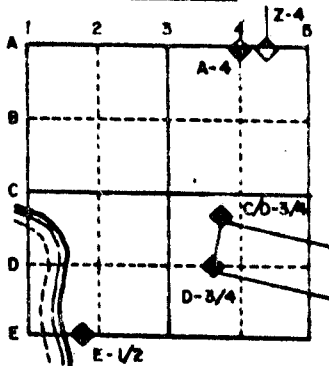
T. 4N., R. 13E.

CORNER CODE INDEX

	1	2	3	4	5	6	7	8	9	10	11	12	13	14	15	16	17	18	19	20	21	22	23	24	25
A																									
B																									
C	6																								
D		5																							
E			4																						
F				3																					
G					2																				
H																									
I	7																								
J		8																							
K			9																						
L				10																					
M					11																				
N						12																			
O							13																		
P								14																	
Q									15																
R										16															
S											17														
T												18													
U													19												
V														20											
W															21										
X																22									
Y																	23								
Z																		24							
																			25						
																				26					
																					27				
																						28			
																							29		
																								30	
																									31
																									32
																									33
																									34
																									35
																									36

PLACE MONUMENT SYMBOL (◆) AT PROPER LOCATION ON ABOVE INDEX

EXAMPLE



MILTON TWP
ROCK COUNTY WI

IF AVAILABLE
STATE PLANE COORDINATES

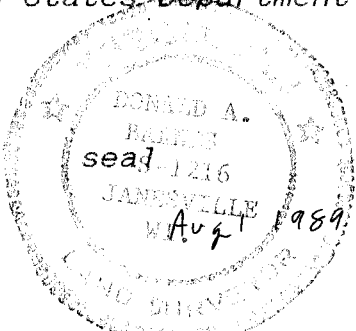
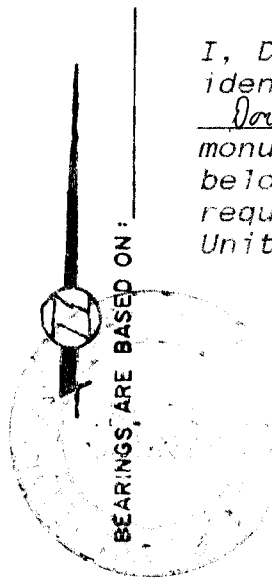
North (Y) _____ Eleve. (Z) _____
 East (X) _____ Zone _____
 Hor. Datum _____ Vert. Datum _____

e.)

◆ CORNER MONUMENT

○ WITNESS MONUMENT

I, Donald Barnes, hereby certify that the corner points as identified by the corner code index were, in a field survey on, Donald Barnes Aug 1989, established, re-established, monumented, re-monumented, recovered or restored as expressed below and in conformance with the regulations and rules as required in the current manual of survey instructions of the United States Department of Interior, Bureau of Land Management.



AFFIX YOUR LAND SURVEYOR SEAL

COUNTY SURVEYOR FILING DATA

Date of computer entry _____

Date microfilmed _____

Number of included sheets _____
CORNER CODE

FIELD BOOK 2 PG 57, 66
62

MICROFILMED

SHEET 1 OF 3

CORNER CODE: 215

(B) Describe any record evidence, monument evidence, occupational evidence, testimonial evidence or any other material evidence you considered, and whether the monument was found or placed.

- 1871 RUGER REMONUMENTATION FIELD NOTES NORTH ON WEST LINE SW 1/4 SEC 14 ON A VAR 5-55 AT 2649.24 INTERSECTED 1/4 LINE AT 1/4 CORNER FOUND REMAINS OF OLD STAKE AT CORNER ALSO FOUND WHERE STUMPS OF BEARING TREES HAD BEEN DUG OUT. PLACED CUT LIMESTONE. NORTH ON WEST LINE NW 1/4 LINE OF SEC 14 ON A VAR 6-00 AT 2649.40 INTERSECTED NORTH BOUNDARY 6.6' WEST OF FOUND CORNER. CORRECTED VAR 5-51.
- 19?? BATTERMAN VOL 5 PG 82 PK IN PVMT. CORNER RESET SHOWS TIES & 2651.10 TO NW CORNER & 2651.10 SE CORNER OF SECTION 14.
- 1932 SUNNY VOL 3 PG 219 SET 1" IRON PIPE 2' LONG IN CONCRETE PAVEMENT BY PROPORTIONAL MEASUREMENT ON LINE FROM SE CORNER OF SECTION 15 TO NE CORNER OF SECTION 15 (FOUND CUT STONE MON"). 6" SOUTH OF FENCE TO EAST. SHOWS A DISTANCE OF 5304.9 E 1/4 COR SECTION 10 AND 5304.9 TO E 1/4 CORNER OF SECTION 22. STATES THAT THESE MONUMENTS WERE DESTROYED DURING THE CONSTRUCTION OF HIGHWAY 26 AND ORDERED REPLACED BY THE COUNTY BOARD OF SUPERVISORS. DIAGRAM DEPICTS 5304.91 AS THE DISTANCE BETWEEN THE NE AND SE CORNERS OF SECTION 15.
- 1975 WOODMAN CSM 5-177 SHOWS A DISTANCE OF 2728.21 TO CENTER OF SECTION 14.
- 1983 BARNES PLACED PK ON LINE WITH THE SE AND NE CORNERS OF SECTION 15 AND AT PROPORTIONATE DISTANCE WITH RUGER'S REMONUMENTATION DISTANCES. ALSO REFERENCED CORNER. CONNECTED TO TOWNSHIP PROJECT.

WHILE STH 26 IS BEING RECONSTRUCTED, I DUG A VERY LARGE HOLE IN SEARCH OF THE CUT LIMESTONE. AT ABOUT 8' DEEP I FOUND ORIGINAL GROUND. I DUG TO A DEPTH OF 10 FEET AND DID NOT FIND THE STONE.

BOTH B.J. SUNNY AND BATTERMAN PLACED THE CORNER ON LINE AND AT EQUAL DISTANCE BETWEEN THE SE AND NE CORNERS OF SECTION 15. BATTERMAN HOWEVER USED A CAST IRON MONUMENT THAT HE PLACED AT THE NE CORNER OF SECTION 15. THIS CAST IRON MONUMENT IS IN A DIFFERENT LOCATION THAN THE CUT LIMESTONE. I AM ESTABLISHING THE CORNER ON LINE BETWEEN THE SE AND NE CORNERS OF SECTION 15 AND AT PROPORTIONATE DISTANCE WITH RUGER'S REMONUMENTATION DISTANCES.

C) Was the corner restored through acceptance of (1) an *obliterated evidence location*, or, (2) a *found perpetuated location*?

THE CORNER IS RESTORED THROUGH ACCEPTANCE OF OBLITERATED EVIDENCE LOCATION.

D) Describe any material discrepancy between the location of the corner as restored or reestablished and the location of that corner as previously restored or reestablished by distance and direction. Show the discrepancy on the plan view drawing under (a), above. Show the distances between the corner as previously restored or reestablished and (1) the corner as restored or reestablished, and (2) to at least 4 of the witness monuments shown on the drawing in (a), above.

YES. SEE DIAGRAM AND "C" ABOVE.

(E) Was the corner reestablished through lost corner proportionate methods? If so, show the method, including the directions and distances to other public land survey corners used as evidence or used for proportioning the corner location.

NO

U.S. PUBLIC LAND SURVEY MONUMENT RECORD

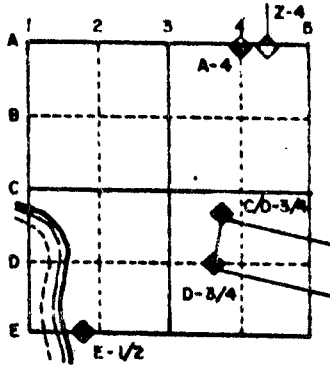
For Public Land Survey Corners in the
T. 4 N., R. 13 E.

CORNER CODE INDEX

1	2	3	4	5	6	7	8	9	10	11	12	13	14	15	16	17	18	19	20	21	22	23	24	25
A																								
B																								
C	6																							
D		5																						
E			4																					
F				3																				
G					2																			
H																								
I	7																							
J		8																						
K			9																					
L				10																				
M					11																			
N						12																		
O																								
P																								
Q																								
R																								
S																								
T																								
U																								
V																								
W																								
X																								
Y																								
Z																								

PLACE MONUMENT SYMBOL (◆) AT PROPER LOCATION ON ABOVE INDEX

EXAMPLE



MILTON TWP
ROCK COUNTY WI

IF AVAILABLE STATE PLANE COORDINATES

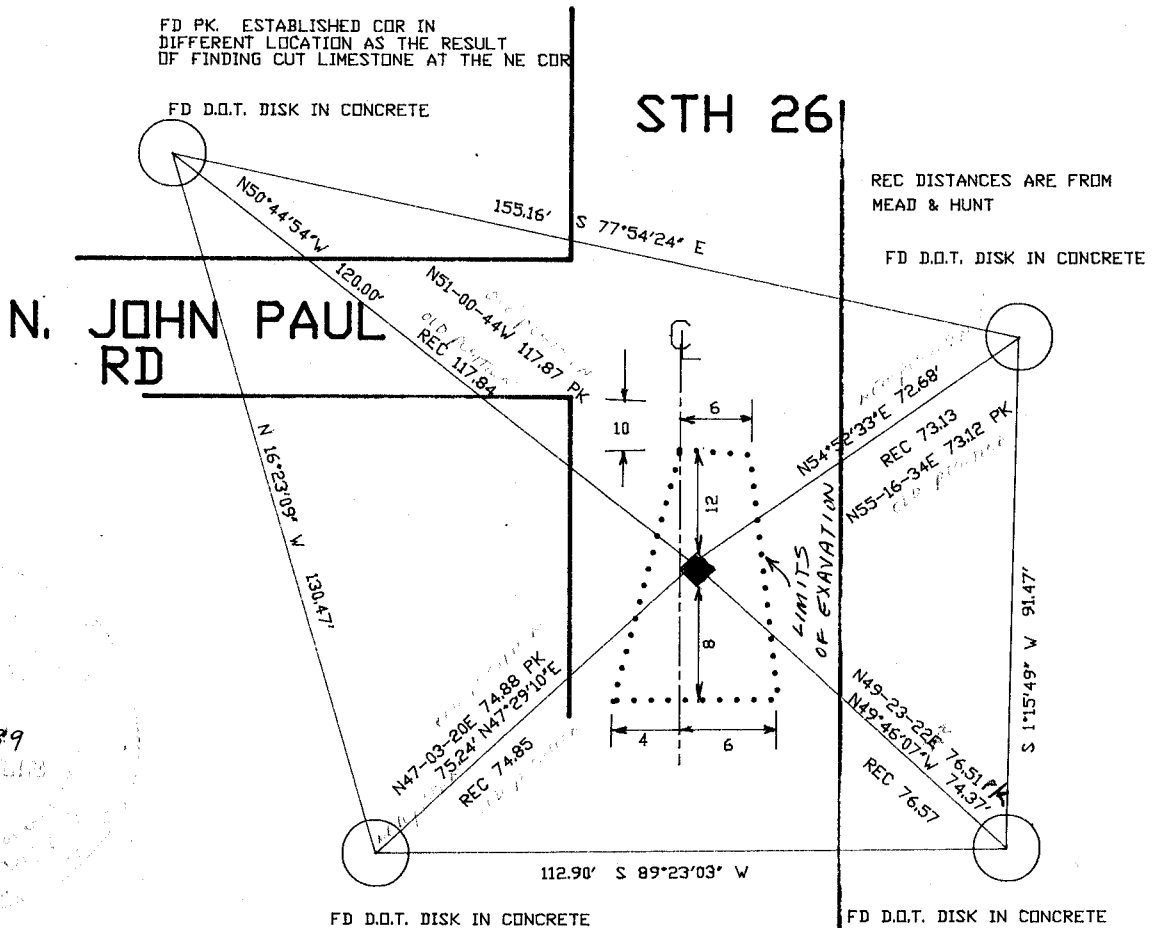
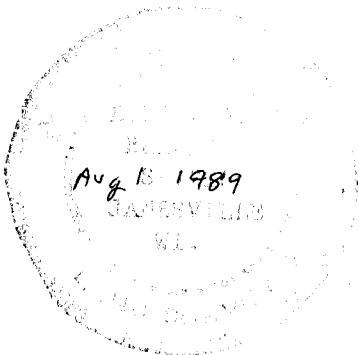
North (Y) _____ Eleve. (Z) _____
 East (X) _____ Zone _____
 Hor. Datum _____ Vert. Datum _____

a.)

◆ CORNER MONUMENT

○ WITNESS MONUMENT

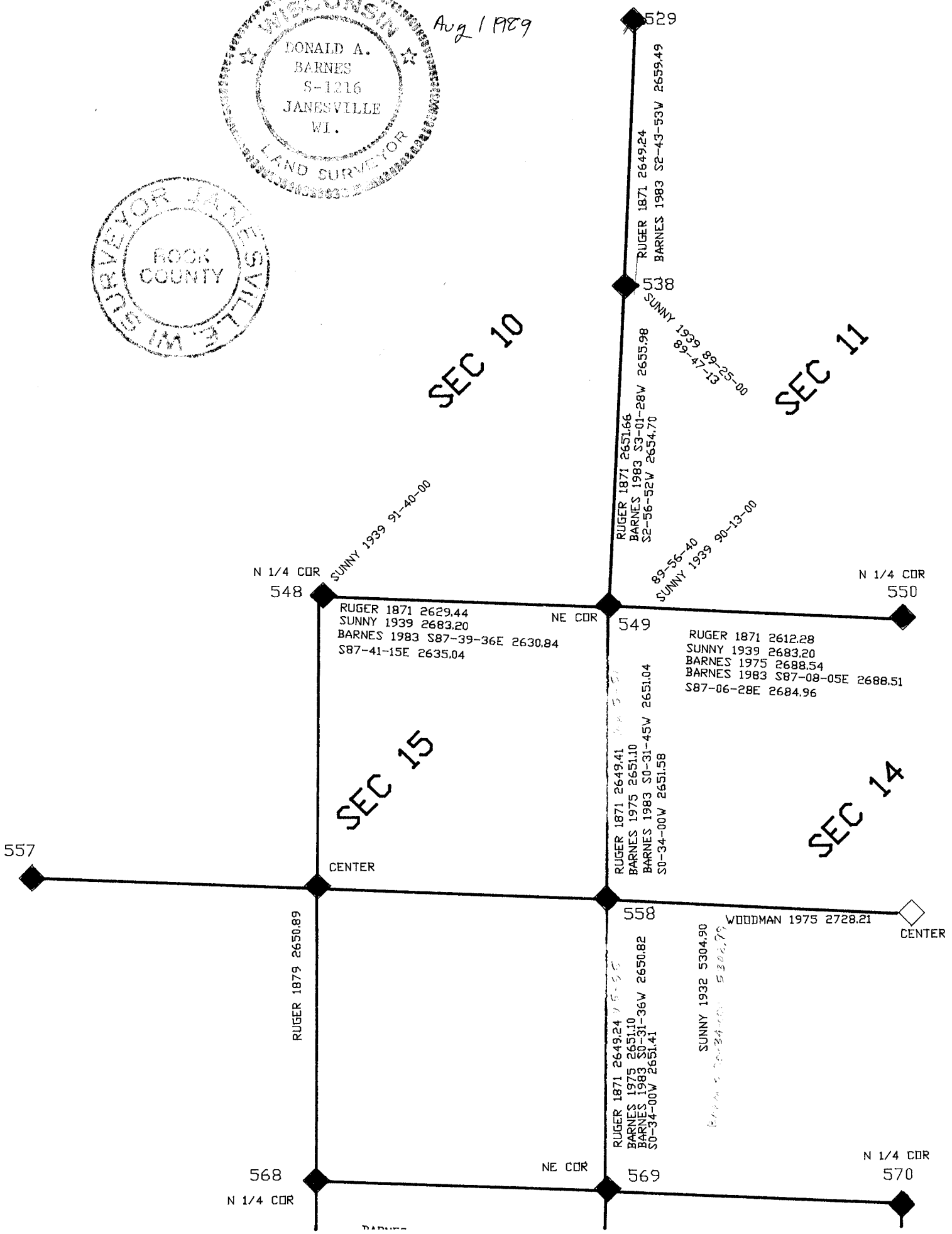
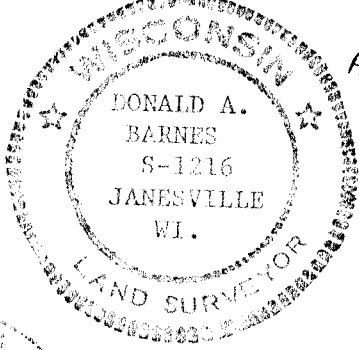
BEARINGS ARE BASED ON: 1983 Township
PROJECT



BOOK 2 PG 62, 5D

Donald Barnes

Aug 1 1989



L 17