

U.S. PUBLIC LAND SURVEY MONUMENT RECORD

For Public Land Survey Corners in:
T. 4 N., R. 12 E

WI ADMINISTRATIVE CODE A-E 7.08 REQUIREMENT

CORNER CODE INDEX

A	1	2	3	4	5	6	7	8	9	10	11	12	13	14	15	16	17	18	19	20	21	22	23	24	25
B	6																								
C																									
D																									
E																									
F																									
G	7	8	9	10	11	12																			
H																									
I																									
J																									
K	18	17	16	15	14	13																			
L																									
M																									
N																									
O	19	20	21	22	23	24																			
P																									
Q																									
R																									
S																									
T																									
U	30	29	28	27	26	25																			
V																									
W																									
X																									
Y																									
Z	31	32	33	34	35	36																			

FULTON TWP
ROCK COUNTY WI

IF AVAILABLE
ROCK COUNTY COORDINATES PREFERRED

North 299,702.682 Elev. _____

East 2,254,358.961

Hor. Datum NAD '27 Vert. Datum _____

LATITUDE _____ ELLIPS. HT. _____

LONGITUDE _____

GPS (X) _____ TRAVERSE (X) X

BASED ON THE FOLLOWING CONTROL:

Traverse run from $\frac{E}{4}$ cor to NE cor to $\frac{N}{4}$

PLACE MONUMENT SYMBOL \blacklozenge AT PROPER LOCATION ON ABOVE INDEX

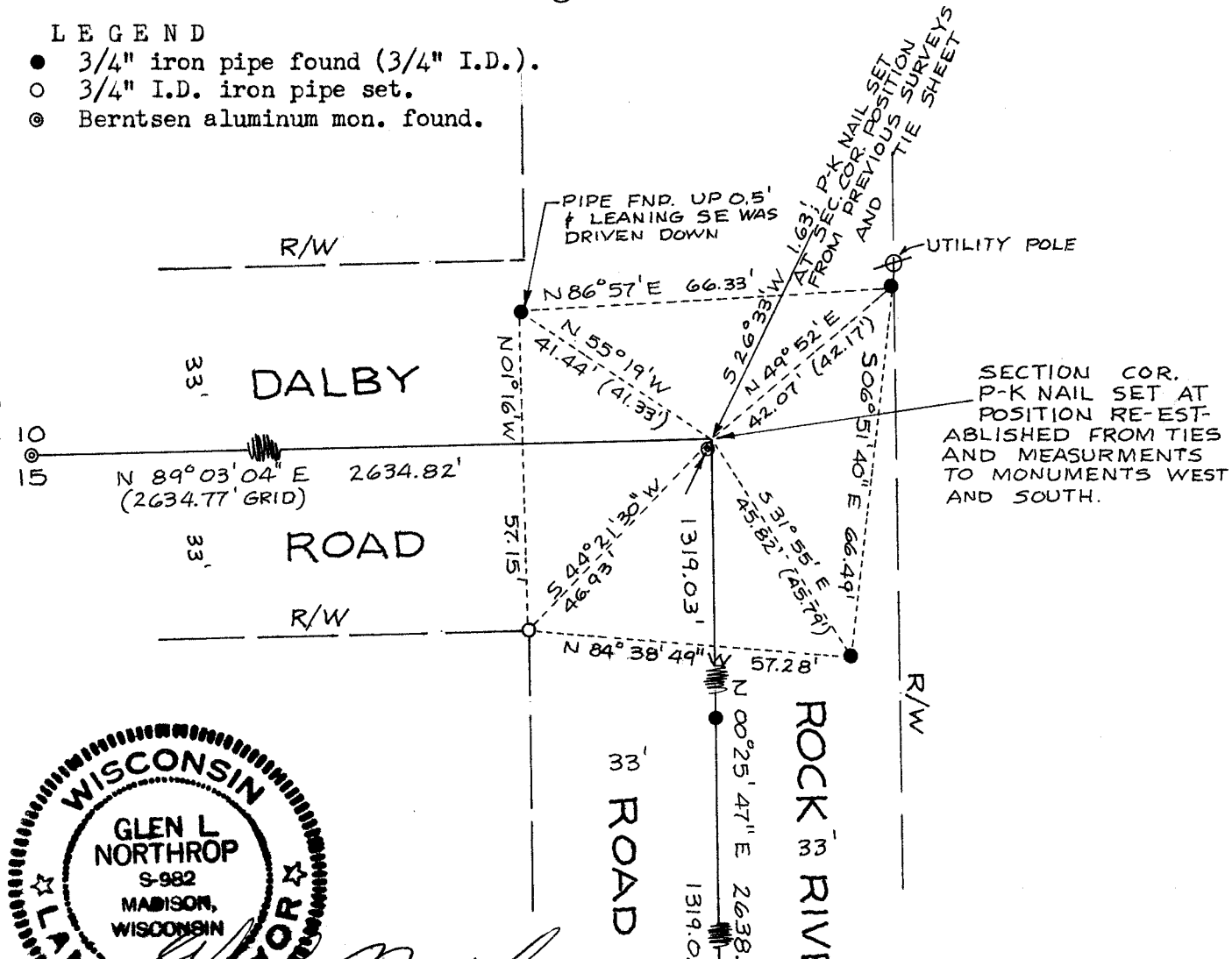
\blacklozenge CORNER MONUMENT \circ WITNESS MONUMENT

(a)

LEGEND

- \bullet 3/4" iron pipe found (3/4" I.D.).
- \circ 3/4" I.D. iron pipe set.
- \odot Berntsen aluminum mon. found.

BEARINGS ARE BASED ON: GRID NORTH WI, STATE PLANE COORD. SYS. NAD '27



SECTION COR. P-K NAIL SET AT POSITION RE-ESTABLISHED FROM TIES AND MEASUREMENTS TO MONUMENTS WEST AND SOUTH.

Stock No. 26273

(B) Describe any record evidence, monument evidence, occupational evidence, testimonial evidence or any other material evidence you considered, and whether the monument was found or placed.

An aluminum Berntsen monument was found but did not agree with existing tie pipes and did not agree with previous record measurements to monuments $\frac{1}{2}$ mile to the west and $\frac{1}{4}$ and $\frac{1}{2}$ mile to the south. A closer inspection of this area shows that the pavement was patched over an apparent E-W trench dug through the roadway and I concluded that the monument found was dug out by recent utility construction and put back in a different location. The corner position as shown in the sketch on the other side of this sheet is N 26°33' E, 1.63' from the present monument location. Reference to County Surveyor Records in Vol. 4, P. 486 and in Vol. 6, P. 104 and to Harold Combs Plat of Survey Map, Order No. 909 dated April 21, 1975 and revised on Aug 28, 1975.

C) Was the corner restored through acceptance of (1) an obliterated evidence location, or, (2) a found perpetuated location?

Corner position was restored from a found perpetuated location verified with measurements to monuments west and south. A P-K nail was set at this location.

D) Describe any material discrepancy between the location of the corner as restored or reestablished and the location of that corner as previously restored or reestablished by distance and direction. Show the discrepancy on the plan view drawing under (a), above. Show the distances between the corner as previously restored or reestablished and (1) the corner as restored or reestablished, and (2) to at least 4 of the witness monuments shown on the drawing in (a), above.

See "B" above and the plan view drawing on the other side of this sheet.

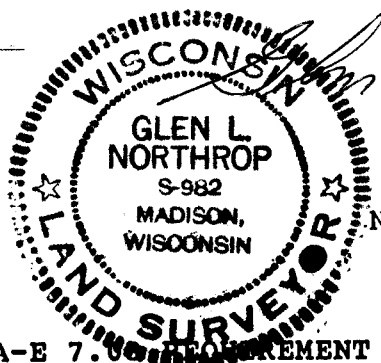
(E) Was the corner reestablished through lost corner proportionate methods? If so, show the method, including the directions and distances to other public land survey corners used as evidence or used for proportioning the corner location.

No.

I, Glen L. Northrop, hereby certify that the corner location as identified by the corner code index was determined by me under by direction and control and that this U.S. Public Land Survey Monument Record is correct and complete to the best of my knowledge and belief.

Dated: SEPT 3, 1997

seal



Number of included sheets 1

emboss / stamped

CORNER CODE

J-17