

U.S. PUBLIC LAND SURVEY MONUMENT RECORD

For Public Land Survey Corners in:

WI ADMINISTRATIVE CODE A-E 7.08 REQUIREMENT

T. 4 N., R. 12 E

CORNER CODE INDEX

| | | | | | | | | | | | | | | | | | | | | | | | | | |
|---|----|---|---|---|---|---|---|---|---|----|----|----|----|----|----|----|----|----|----|----|----|----|----|----|----|
| A | 1 | 2 | 3 | 4 | 5 | 6 | 7 | 8 | 9 | 10 | 11 | 12 | 13 | 14 | 15 | 16 | 17 | 18 | 19 | 20 | 21 | 22 | 23 | 24 | 25 |
| B | | | | | | | | | | | | | | | | | | | | | | | | | |
| C | 6 | | | | | | | | | | | | | | | | | | | | | | | | |
| D | | | | | | | | | | | | | | | | | | | | | | | | | |
| E | | | | | | | | | | | | | | | | | | | | | | | | | |
| F | | | | | | | | | | | | | | | | | | | | | | | | | |
| G | 1 | | | | | | | | | | | | | | | | | | | | | | | | |
| H | | | | | | | | | | | | | | | | | | | | | | | | | |
| I | | | | | | | | | | | | | | | | | | | | | | | | | |
| J | | | | | | | | | | | | | | | | | | | | | | | | | |
| K | | | | | | | | | | | | | | | | | | | | | | | | | |
| L | 18 | | | | | | | | | | | | | | | | | | | | | | | | |
| M | | | | | | | | | | | | | | | | | | | | | | | | | |
| N | | | | | | | | | | | | | | | | | | | | | | | | | |
| O | | | | | | | | | | | | | | | | | | | | | | | | | |
| P | 19 | | | | | | | | | | | | | | | | | | | | | | | | |
| Q | | | | | | | | | | | | | | | | | | | | | | | | | |
| R | | | | | | | | | | | | | | | | | | | | | | | | | |
| S | 30 | | | | | | | | | | | | | | | | | | | | | | | | |
| T | | | | | | | | | | | | | | | | | | | | | | | | | |
| U | | | | | | | | | | | | | | | | | | | | | | | | | |
| V | | | | | | | | | | | | | | | | | | | | | | | | | |
| W | | | | | | | | | | | | | | | | | | | | | | | | | |
| X | 31 | | | | | | | | | | | | | | | | | | | | | | | | |
| Y | | | | | | | | | | | | | | | | | | | | | | | | | |
| Z | | | | | | | | | | | | | | | | | | | | | | | | | |

FULTON TWP

ROCK COUNTY WI

IF AVAILABLE
ROCK COUNTY COORDINATES PREFERRED

North 318,414.41 Elev. _____

East 472,142.90

Hor. Datum _____ Vert. Datum _____

LATITUDE _____ ELLIPS. HT. _____

LONGITUDE _____

GPS (X) _____ TRAVERSE (X) _____

BASED ON THE FOLLOWING CONTROL:

PLACE MONUMENT SYMBOL AT PROPER LOCATION ON ABOVE INDEX

CORNER MONUMENT

WITNESS MONUMENT

(a)

BEARINGS ARE BASED ON:

FIELD BOOK _____ PAGE # _____

SHEET 1 OF 2

SHOW A PLAN VIEW DRAWING DEPICTING THE CORNER MONUMENT AND SURROUNDING PHYSICAL FEATURES, INCLUDING THE EXCAVATION AREA AND DEPTH.

PLANNING & ZONING COMMITTEE ADOPTED THE ABOVE FORM ON 12/2/1982

CORNER CODE 5-7

FUE44

(D) Describe any record evidence, monument evidence, occupational evidence, testimonial evidence or any other material evidence you considered, and whether the monument was found or placed.

- 1871 RUGER VOL 2 PG 57 COR LOST. ESTABLISHED IT FROM SECTION CORNERS. SET LIMESTONE 22X9X5. SAID STONE IS 30.69' FROM FENCE ON SOUTH SIDE OF ROAD & IN LINE WITH SMALL MAPLE TREES. 2673.83' VAR 8-02 TO SW COR SEC 8, 2673.83 VAR 8-02 TO SE COR SEC 8, & VAR 7-58 ALONG N/S CENTER LINE OF SEC 8.
- 1888/? ROAD RECORDS VOL 6 PG 533 FROM A BOOK IN COUNTY CLERK'S VAULT SHOWS THE FOLLOWING. STARTING FROM A POINT ON THE WEST LINE OF SW ¼ OF SEC 16 WHICH IS 194.06' FROM THE SW COR SEC 16 & 2445.96 FROM THE W ¼ COR SEC 16 THENCE N34W 1716', THENCE N55 ½ W 2024.22 TO THE N ¼ COR SEC 17, THENCE NORTH 10,560' TO THE N ¼ COR SEC 8.
- 1898 BROWN VOL 2 PG 506 FD STONE. 2663.73 TO SE COR SEC 8.
- 1937 SUNNY VOL 3 PG 359 ¼ COR OF SEC 8 & 17 FOUND LIMESTONE MON AS DESCRIBED BY RUGER 1871. SET 1 ½"X13" CAPPED PIPE ON TOP. REFERENCED SAME.
- 1966 BATTERMAN VOL 4 PG 279 REFERENCED CORNER BUT STATES NOTHING ABOUT MONUMENT. WPL 299,474.75;2,241,104.83 E/W NAD 27. NOTE: AT S ¼ COR DUG & FD 2" CAPPED PIPE 4" DOWN 4/17/72.
- 1972 LEE VOL 4 PG 553 DUG & FD 2" CAPPED PIPE 4" DOWN. REFERENCED SAME.
- 1978 SANDENES VOL 5 PG 448 299,474.779N/S; 2,241,404.907E/W ELEV 849.30 FOR S ¼ COR SEC 8 & 299,412.61 N/S;2,238,427.59 E/W FOR SW COR SEC 8.
- 1979 BARNES VOL 6 PG 42 SHOWS SANDSNESS COORDINATES AND N88-38-41E 2668.16 TO SE COR SEC 8 FROM HIS COORDINATES. COMPUTED A TRUE NORTH OF N89-15-49E TO SE COR SEC 8.
- 1982 BARNES VOL 6 PG 241. FD ALUM. MON. ELEV 849 & (TRAVERSE SKETCH AS SHOWN ON MY SKETCH)
- 1983 BARNES VOL 6 PG 303 BEARINGS & DISTANCES COMPUTED FROM RECORD COORDINATES. N88-38-39E 2668.24 TO SE COR SEC 8, S88-40-13W 2677.96 TO SW COR SEC 8, N1-18-11W 2658.99 TO CENTER OF SEC 8. WPL 299,474.75N/S;2,241,104.83 E/W, ROYAL OAK ENGINEERING 299,474.78 N/S; 2,241,104.91E/W

FD ALUM. MON. & SOME OF THE REFERENCE MONUMENTS. ESTABLISHED COUNTY COORDINATES FROM WPL GPS STATIONS.

(C) Was the corner restored through acceptance of (1) an obliterated evidence location, or, (2) a found perpetuated location?

ACCEPTED FOUND ALUM. MON.

(D) Describe any material discrepancy between the location of the corner as restored or reestablished and the location of that corner as previously restored or reestablished by distance and direction. Show the discrepancy on the plan view drawing under (a), above. Show the distances between the corner as previously restored or reestablished and (1) the corner as restored or reestablished, and (2) to at least 4 of the witness monuments shown on the drawing in (a), above.

(E) Was the corner reestablished through lost corner proportionate methods? If so, show the method, including the directions and distances to other public land survey corners used as evidence or used for promortioning the corner location.

I, Donald Barnes, hereby certify that the corner location as identified by the corner code index was determined by me under my direction and control and that this U.S. Public Land Survey Monument Record is correct and complete to the best of my knowledge and belief.

Seal

Donald Barnes

Emboss

11/04/99

Number of included sheets 1

CORNER CODE **J-7**

WPL #70
FD T BAR
322,355.78 N/S
472,077.28 E/W
COUNTY SYSTEM

WPL #71
FD T BAR
319,496.32 N/S
472,140.63 E/W
COUNTY SYSTEM

WPL #71
FD T BAR
319,496.32 N/S
472,140.63 E/W
COUNTY SYSTEM

U.P.

SET 1/2X24" REROD

DALLMAN RD

S55-23-08E 116.23

S15-14-07E 104.78

N20-16-26E 140.10

SET 1/2X24" REROD

18" WALNUT TREE

SET 1/2X24" REROD

POMEROY RD
S 1/4 COR
SEC 8

S89-18-05W 2678.02

FD ALUM

REC 44.91

REC 44.74

REC 44.91

REC 44.91

REC 44.91

REC 44.91

REC 44.91

REC 44.91

REC 44.91

REC 44.91

REC 44.91

REC 44.91

REC 44.91

REC 44.91

REC 44.91

REC 44.91

REC 44.91

STUMP

FD PIPE

FD PIPE

FD PIPE

FD PIPE

FD PIPE

FD PIPE

FD PIPE

FD PIPE

FD PIPE

N88-35-56E 111.55

N88-35-56E 111.55

N88-35-56E 111.55

N88-35-56E 111.55

N88-35-56E 111.55

N88-35-56E 111.55

N88-35-56E 111.55

N88-35-56E 111.55

N88-35-56E 111.55

N88-35-56E 111.55

N88-35-56E 111.55

N88-35-56E 111.55

N88-35-56E 111.55

N88-35-56E 111.55

N88-35-56E 111.55

N88-35-56E 111.55

N88-35-56E 111.55

N88-35-56E 111.55

N88-35-56E 111.55

N88-35-56E 111.55

N88-35-56E 111.55

N88-35-56E 111.55

N88-35-56E 111.55

N88-35-56E 111.55

N88-35-56E 111.55

N88-35-56E 111.55

N88-35-56E 111.55

N88-35-56E 111.55

N88-35-56E 111.55

N88-35-56E 111.55

N88-35-56E 111.55

N88-35-56E 111.55

N88-35-56E 111.55

N88-35-56E 111.55

N88-35-56E 111.55

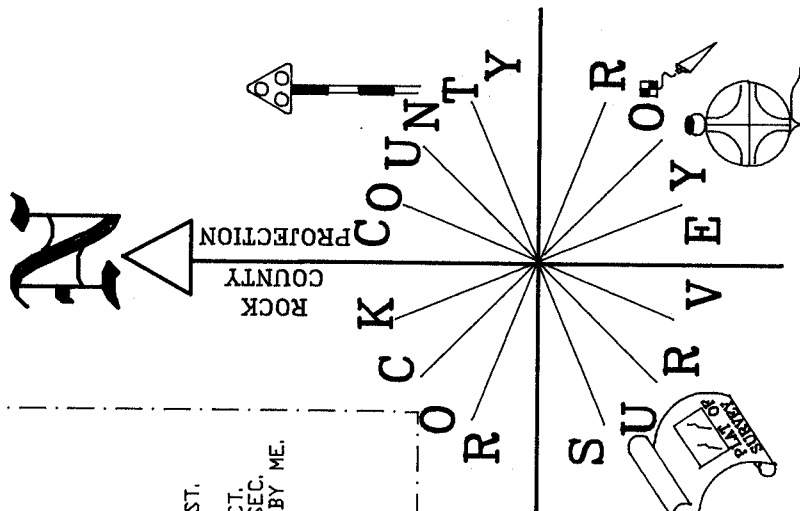
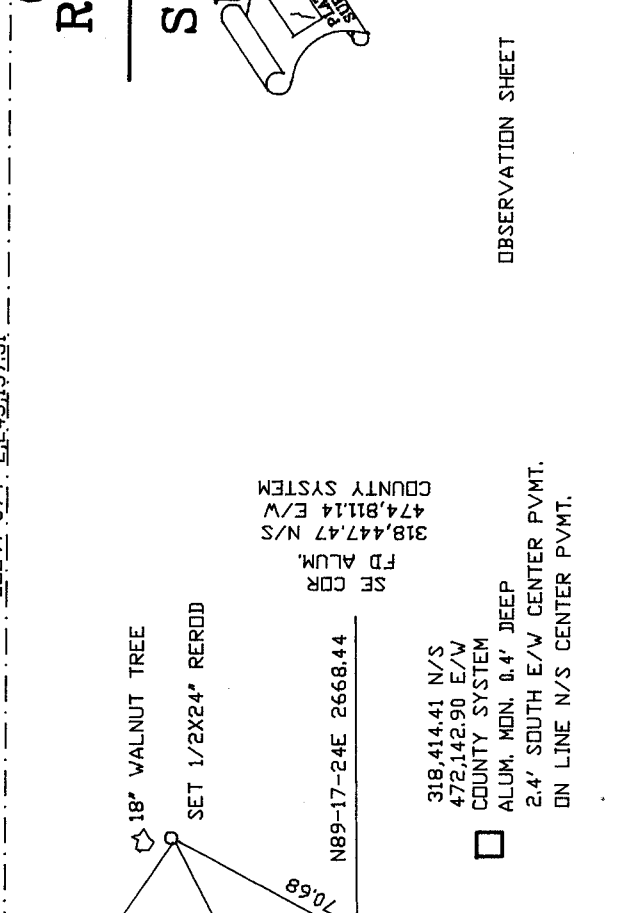
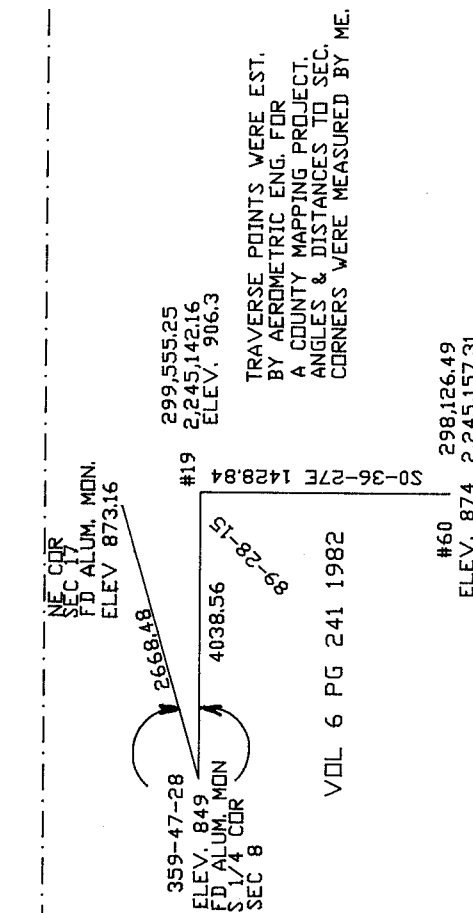
N88-35-56E 111.55

N88-35-56E 111.55

N88-35-56E 111.55

N88-35-56E 111.55

N88-35-56E 111.55



OBSERVATION SHEET

Donald Barnes
EMBOSSED SEAL

11/04/99

318,391.76 N/S
469,465.08 E/W
COUNTY SYSTEM
SV CDR
FD CAPPED PIPE

318,414.41 N/S
472,142.90 E/W
COUNTY SYSTEM
ALUM. MON. 0.4' DEEP
2.4' SOUTH E/W CENTER PVMT.
ON LINE N/S CENTER PVMT.

318,447.47 N/S
474,811.14 E/W
COUNTY SYSTEM
SF CDR

318,447.47 N/S
474,811.14 E/W
COUNTY SYSTEM
SF CDR

5-7