

Paper weight-110# (minimum)

Black nonfading ink required

U.S. PUBLIC LAND SURVEY MONUMENT RECORD

For Public Land Survey Corners In:

WI ADMINISTRATIVE CODE A-E 7.08 REQUIREMENT

T. 4 N. R. 12 E. 4th P.M.

REV 10/23/2004

USMONREC.DWG

CORNER CODE INDEX

FULTON TWP

ROCK COUNTY WI

IF AVAILABLE

ROCK COUNTY COORDINATES PREFERRED

North _____ Elev. _____

East _____

Hor. Datum _____ Vert. Datum _____

LATITUDE _____ ELLIPS. HT. _____

LONGITUDE _____

NAD83(91) _____ NETWORK ADJ. YR _____

GPS (X) _____ TRAVERSE (X) _____

BASED ON THE FOLLOWING CONTROL:

	1	2	3	4	5	6	7	8	9	10	11	12	13	14	15	16	17	18	19	20	21	22	23	24	25		
A																											A
B																											B
C		6																									C
D																											D
E																											E
F																											F
G																											G
H																											H
J																											J
K																											K
L																											L
M																											M
N																											N
O																											O
P																											P
Q																											Q
R																											R
S																											S
T																											T
U																											U
V																											V
W																											W
X																											X
Y																											Y
Z																											Z

1 2 3 4 5 6 7 8 9 10 11 12 13 14 15 16 17 18 19 20 21 22 23 24 25
PLACE MONUMENT SYMBOL AT PROPER LOCATION ON ABOVE INDEX

CORNER MONUMENT

WITNESS MONUMENT

(a)

BEARINGS ARE BASED ON: _____

FIELD BOOK _____ PAGE # _____

SHEET 1 OF 3

SHOW A PLAN VIEW DRAWING DEPICTING THE CORNER MONUMENT AND SURROUNDING PHYSICAL FEATURES, INCLUDING THE EXCAVATION AREA AND DEPTH.

PLANNING & ZONING COMMITTEE ADOPTED THIS FORM ON 12/2/1982

CORNER CODE T-9(1)

FU596 ^

(B) Describe any record evidence, monument evidence, occupational evidence, testimonial evidence or any other material evidence you considered, and whether the monument was found or placed.

- 1836 (AUG) BURNHAM NORTH BETWEEN SECTIONS 28 & 29
384.12 BUR OAK 12 IN DI
2640 SET 1/4 SEC POST YELLOW OAK 18 N72 1/2W 934.56'
W. OAK 16 S50 1/2W 466.62 FIRST RATE W YELLOW &
BUR OAK OPENINGS & DRY PRAIRIE
3300 ENTER DRY PRAIRIE
5280 SET POST COR TO 20,21,28 & 29 BUR OAK 16 NB
1/2E 934.56' BUR OAK 8 N50 1/2W 466.62'
FIRST RATE W., YELLOW, BUR OAK OPENINGS & DRY
PRAIRIE
- 1884 RUGER VOL 2 PG 380 FD REMAINS OF OLD STAKE & WHERE
BTS HAD BEEN DUG UP. SET IN PLACE OF OLD STAKE, HH
24X18X14 POINT UP. VAR 5-30 2634.72 TO GEN SEC 29,
5270.60 TO W 1/4 COR SEC 29, & VAR 4-19 2654.85 TO SE
COR SEC 29
- 1977 SCHROEDER CSM VOL 6 PG 348 STATES NOTHING ABOUT
MON.
- 1977 SCHROEDER CSM VOL 7 PG 128 STATES NOTHING ABOUT
MON. 1322.40 WEST OF CENTER OF CTH F.
- 1985 NORTHROP T-9 EXIST CAST IRON MON. FD BROKEN OFF, SET
BACK OVER BASE TO BE AT THE SURFACE. EVIDENCE FOR
ACCEPTANCE OF THIS CORNER IS THE BROKEN HARRISON
CAST IRON MON. FD AT THIS COR. WHICH WAS FD AT THE
INTERSECTION OF OLD FENCE LINES RUNNING TO THE NORTH,
SOUTH AND WEST. MEASUREMENTS TO EXISTING MONUMENTS
TO THE NORTH AND SOUTH SHOW THIS COR. MON. TO BE
VERY NEARLY 1/2 WAY BETWEEN CORNERS, ALSO, THE MON.
FOUND AGREES WITH THE DISTANCE OF RECORD ON CSMs
VOL 6 PG 348 & VOL 7 PG 128. NOTE THAT EXISTING FENCES
AT THE CORNER ARE GONE BUT ARE STANDING DISTANT FROM
THE CORNER.
- 1985 NORTHROP #7421 C.I. 2641.40 TO CENTER OF SEC 28 &
2659.92 TO SW COR SEC 28, & ANGLE OF 91-02-02 @ W 1/4
COR SEC 28 FROM E 1/4 TO SW COR OF SEC 28
- 1985 NORTHROP #13744 FD C.I. NB9-34-52E 2641.40 TO GEN SEC
28, NB9-34-52E 5270.34 TO E 1/4 COR SEC 28, SO-36-54W
2659.92 TO SW COR SEC 28
- 1989 SCHROEDER #208 CALLS FOR SEC COR BUT STATES NOTHING
ABOUT MON.
- 2000 NORTHROP #7634 CAST IRON MON 2641.40 TO CENTER SEC
28 & 5270.34 TO E 1/4 COR SEC 28, ANGLE OF 89-48-14 @ W
1/4 COR SEC 28 FROM GEN SEC 28 TO SW COR SEC 28, ANGLE
88-44-17 @ SW COR SEC 28 FROM W 1/4 COR SEC 28 TO S 1/4
COR SEC 28
- 2002 NORTHROP #14234 CAST IRON MON 2641.40 TO CENTER SEC
28.

Donald
Rouse
11/16/07

SHEET 1 OF 3
CORNER CODE T-9(1)

FU596

FD CI & REFERENCE MONUMENTS

C) Was the corner restored through acceptance of (1) an obliterated evidence location, or, (2) a found perpetuated location?

ACCEPTED FD MON. THE CI IS 0.94' WEST OF LINE BETWEEN THE NW AND SW CORNERS OF SEC 28. IT IS ALSO WITHIN 0.3 OF THE MIDPOINT.

D) Describe any material discrepancy between the location of the corner as restored or reestablished and the location of that corner as previously restored or reestablished by distance and direction. Show the discrepancy on the plan view drawing under (a), above. Show the distances between the corner as previously restored or reestablished and (1) the corner as restored or reestablished, and (2) to at least 4 of the witness monuments shown on the drawing in (a), above.

(E) Was the corner reestablished through lost corner proportionate methods? If so, show the method, including the directions and distances to other public land survey corners used as evidence or used for proportioning the corner location.

I, **Donald Barnes**, hereby certify that the corner location as identified by the corner code index was determined by me under my direction and control and that this U.S. Public Land Survey Monument Record is correct and complete to the best of my knowledge and belief.

Seal

Emboss

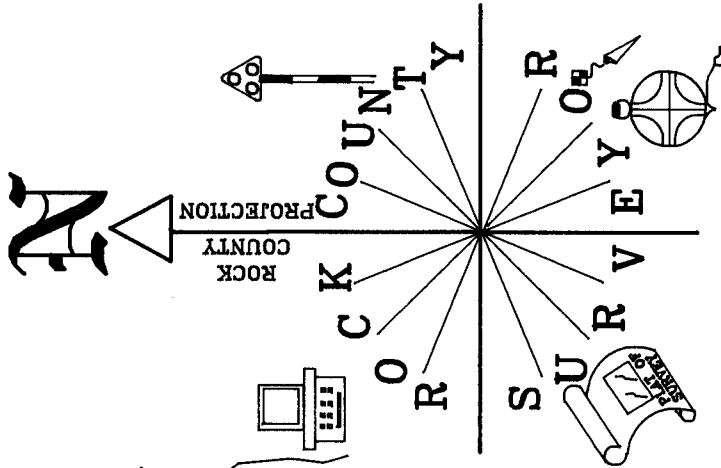
Barnes

11/16/07

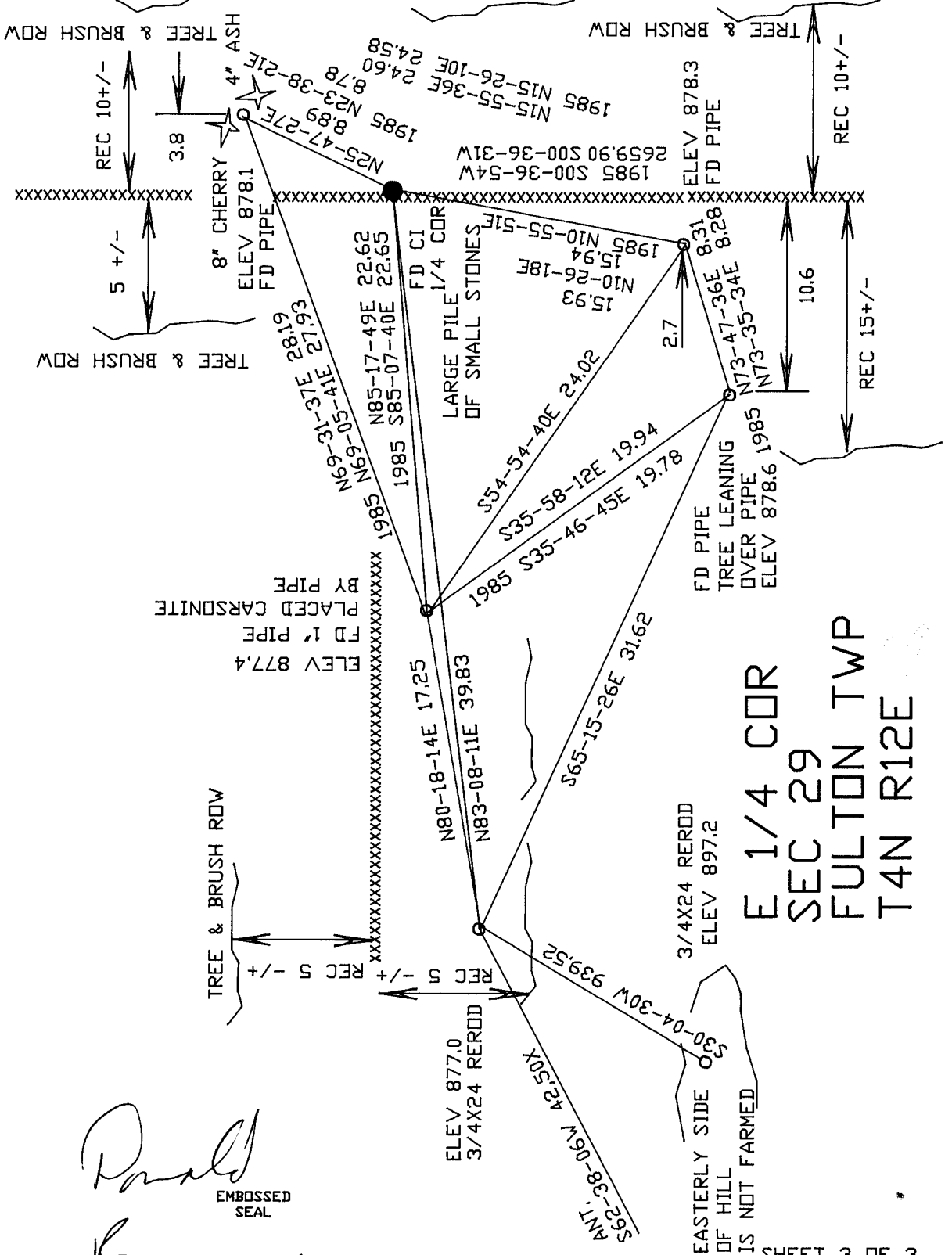
SHEET 2 OF 3

CORNER CODE
A.E. 7.08 REQUIREMENT

T-9(1)



NOT TO SCALE
 OBSERVATION SHEET #177 & 255
 1985 DISTANCES ARE BY
 NORTHROP (T-9)
 ALL FD REF. PIPES
 ARE 0.5 TO 0.7'
 ABOVE GRADE



**E 1/4 COR
 SEC 29
 FULTON TWP
 T4N R12E**

Donald Barnes
 11/16/07

EMBOSSED SEAL

SHEET 3 OF 3
 T-9(1)