

Paper weight-110# (minimum)

ack nonfading ink required

U.S. PUBLIC LAND SURVEY MONUMENT RECORD

For Public Land Survey Corners In:

WI ADMINISTRATIVE CODE A-E 7.08 REQUIREMENT

T. 4 N. R. 13 E. 4th P.M.

REV 10/23/2004

USMONREC.DWG

CORNER CODE INDEX

	1	2	3	4	5	6	7	8	9	10	11	12	13	14	15	16	17	18	19	20	21	22	23	24	25		
A																											A
B																											B
C																											C
D																											D
E																											E
F																											F
G																											G
H																											H
J																											J
K																											K
L																											L
M																											M
N																											N
O																											O
P																											P
Q																											Q
R																											R
S																											S
T																											T
U																											U
V																											V
W																											W
X																											X
Y																											Y
Z																											Z

WILTON TWP
ROCK COUNTY WI

IF AVAILABLE
ROCK COUNTY COORDINATES PREFERRED

North _____ Elev. _____

East _____

Hor. Datum _____ Vert. Datum _____

LATITUDE _____ ELLIPS. HT. _____

LONGITUDE _____

NAD83(91) _____ NETWORK ADJ. YR 2010

GPS (X) _____ TRAVERSE (X) X

BASED ON THE FOLLOWING CONTROL:

PLACE MONUMENT SYMBOL AT PROPER LOCATION ON ABOVE INDEX

CORNER MONUMENT

WITNESS MONUMENT

(a)

BEARINGS ARE BASED ON: ROCK COUNTY PROJECTION

FIELD BOOK _____ PAGE # _____

OR OBSERVATION SHEET _____

SHEET 1 OF 6

SHOW A PLAN VIEW DRAWING DEPICTING THE CORNER MONUMENT AND SURROUNDING PHYSICAL FEATURES, INCLUDING THE EXCAVATION AREA AND DEPTH.

PLANNING & ZONING COMMITTEE ADOPTED THIS FORM ON 12/2/1982

CORNER CODE V-15(3)

MI608 S1/4CORSEC27

(B) Describe any record evidence, monument evidence, occupational evidence, testimonial evidence or any other material evidence you considered, and whether the monument was found or placed.

1834 HARRISON (MARCH) EAST RANDOM BETWEEN SECS 27 & 34
T4N R13E

2442 GROVE IN PRAIRIE BUR OAK

3630 LEAVE DO

4422 TRAIL C N & S

5227.20 INT. EAST BDY 26.4' NORTH. FIRST RATE DRY
PRAIRIE & BUR OAK OPENINGS.

WEST CORRECTED BETWN 27 & 34

2613.60 SET 1/4 SEC POST. BUR OAK 8 S42E 99', BUR
OAK 8 N51W 120.78'

5227.20 TO CORNER

1871 RUGER REMON. SET CUT LIMESTONES.

EAST ON NORTH LINE OF NW 1/4 SEC 34
ON A VAR 3-42 AT

2628.84 INTERSECTED 1/4 LINE 5.28' SOUTH OF 1/4 COR
FOUND OLD STAKE AT COR ALSO FD NW & SE
BEARING TREES. COR VAR 3-48

EAST ON NORTH LINE OF NE 1/4 SEC 34
ON A VAR 3-55 AT

2627.46 INTERSECTED EAST BOUNDARY LINE 9.9' NORTH
OF COR. FOUND OLD STAKE SURROUNDED BY
STONES AT COR. COR VAR 3-42

1908 WHITFORD P7 PG 30 "BROWN ADD." STONE. NORTH 477.51'
TO START OF SUB.

1923 LUSTIG P9 PG 47 "BRASS' ADD." CUT STONE. S87-07-45E
330.2'; THENCE SOUTH 33.0'. COMMENCING @ S 1/4 COR
SEC 27 THENCE SOUTH 33.00; THENCE S87-07-45E 145.33
TO WEST R/W OF ROGER ST.; THENCE S87-07-45E 24.75' TO
CENTER OF ROGER ST.; THENCE S87-07-45E 24.75 TO EAST
R/W OF ROGER ST.

1933 SUNNY VOL 3 PG 238 S 1/4 COR SEC 27 DESTROYED WHEN
SEWER WAS BUILT IN 1923. EASTERLY 386.64 TO WEST LINE
OF 16.8' MILTON COLLEGE LAND. 145.3 EASTERLY TO WEST
R/W LINE OF ROGERS ST & WESTERLY 264 TO EAST R/W LINE
OF PLUM ST. SHOWS 2628.14 TO SE COR SEC 27. STATES
NOTHING ABOUT MONUMENTS @ SEC CORNERS.

1938 SUNNY ASSESSORS PLAT STATEMENT "SAID PLAT &
ACCOMPANING LIST THEREOF WAS PREPARED FROM THE
REGISTER OF DEEDS OFFICE. COMPLIED WITH THE
PROVISIONS OF CHAPTER 70.27. STATES NOTHING ABOUT
THE MON. AT THE S 1/4 COR SEC 27. 2648.58 FROM N 1/4
COR SEC 34 TO CENTER OF SEC 34.

1945 SUNNY #8648 FD PIPE. A LINE FROM THE S 1/4 COR SEC
27 TO THE CENTER OF SEC 27 INTERSECTS THE E/W
PROPERTY LINE AT 25.26 WEST OF THE PROPERTY CORNER.
CALLS FOR A 66.0 RD R/W.

1947 SUNNY P14 PG 6 "Mc WILLIAM'S ADD." STATES NOTHING
ABOUT MON. S89-00W 442.0 THENCE S4-06E 33 TO SOUTH
R/W OF HIGH ST. FROM N 1/4 COR SEC 34 S4-06E 33 TO
PROPERTY CORNER.

1956 TRIELOFT P18 PG 30 "GREEN HILL SUB" STATES NOTHING
ABOUT MON. WESTERLY 783.75 TO START OF SUB.

1957 ELY #13424 STATES NOTHING ABOUT MON.

1958 ELY #13425 STATES NOTHING ABOUT MON.

1958 ELY GSM VOL 1 PG 10 STATES NOTHING ABOUT MON.

SEAL
Emboss

SHEET 1 OF 6

*Daniel
Baues*

CORNER CODE V-15(3)

Mar 28, 2011

- 1958 BATTERMAN JR. #8855 FD PIPE. NO-01E 2656.23 TO FD PIPE @ CENTER OF SEC 27. FROM S 1/4 COR SEC 27 N86-37W 1315.20 TO SET PIPE; THENCE N86-37W 1315.20 TO PIPE; THENCE NORTH 2651.90 TO SET CONC. @ W 1/4 COR SEC 27.
- 1960 BRIDWALL P20 PG 21 "BERTLON ESTATES" STATES NOTHING ABOUT MON. FD 1" PIPE @ CENTER OF SEC 34; THENCE NO-10E ALONG N/S 1/4 LINE. FROM CENTER OF SEC 35 S86-42-30E 601.00 TO PROPERTY COR.
- 1965 CHENEY P23 PG 5 "FIRST ADD TO GREEN HILL" STATES NOTHING ABOUT MON. WESTERLY 1310.75.
- 1970 COMBS CSM VOL 1 PG 254 STATES NOTHING ABOUT MON.
- 1970 COMBS CSM VOL 1 PG 277 FD EXISTING PIPE. N87-29-45W 1312.04 TO SE COR OF SW 1/4 OF SW 1/4 SEC 27. FD PIPE 0.31' EAST OF SW 1/4 OF SW 1/4 SEC 27. FROM SW COR SEC 27 S87-29-45E 1319.03 TO SE COR OF SW 1/4 OF SW 1/4 SEC 27 THENCE N-48-45W 33.05 TO NORTH R/W LINE.
- 1974 COMBS CSM VOL 4 PG 151 STATES NOTHING ABOUT MON. N88-31E 821.25; THENCE S3-56E 33.03 TO SOUTH R/W LINE.
- 1975 COMBS #8644 STATES NOTHING ABOUT MON.
- 1975 COMBS #8645 STATES NOTHING ABOUT MON
- 1976 HELD #8865 FD PIPE
- 1976 COMBS CSM VOL 6 PG 5 SAME AS CSM VOL 4 PG 151
- 1977 BARNES VOL 5 PG 301 FD 1/2" REBAR IN CENTER OF HIGH ST. ABOUT 290' EAST OF CENTER OF PLUMB ST. REFERENCED TO 4 UTILITY POLES WITH PKS IN SIDE.
- 1977 BARNESVOL 5 PG 304 FD 1" IRON PIPE. REPLACED WITH ALUM. MON.
- 1978 ZINDEL CSM VOL 7 PG 228 FD MON BUT DOES NOT DESCRIBE MON. S89-35-34W 264.10; THENCE N3-46-56E 32.19 TO NORTH R/W LINE. CALLS FOR REC S87-37W 87.74 FROM S 1/4 COR SEC 27
- 1978 CHENEY CSM VOL 8 PG 201 STATES NOTHING ABOUT MON. N86-38W 983.95 TO START OF SUB.
- 1979 WOODMAN #8664 SUB
- 1983 BARNES REMON FD ALUM. MON S87-42-01E 2628.28 TO SE COR SEC 27, N87-33-02W 2630.84 TO SW COR SEC 27, N00-55-38W (2652.06) 2656.90 TO CENTER OF SEC 27.
- 1983 SCHROEDER CSM VOL 11 PG 239 STATES NOTHING ABOUT MON. S1-10-00W 2653.89 TO CENTER OF SEC 34; THENCE S86-42-30E.
- 1984 COMBS CSM VOL 11 PG 409 FD IRON PIPE N84-53-40E 561.55; THENCE SOUTHERLY 32.98 TO SOUTH R/W LINE.
- 1984 COMBS CSM VOL 11 PG 411 FD ALUM. S7-59-05E TO SET PIN @ CENTER OF SEC 34
- 1984 COMBS CSM VOL 11 PG 416 FD ALUM. EASTERLY 647.46 TO START OF CSM.
- 1984 COMBS CSM VOL 11 PG 423 FD ALUM N84-53-40E 996.51
- 1984 COMBS CSM VOL 11 PG 429 FD ALUM N84-53-40E 687.51 TO EAST R/W LINE OF CAMPUS ST.; THENCE S7-57-50E 33.02 TO SOUTH R/W LINE OF HIGH ST.
- 1984 COMBS CSM VOL 11 PG 431 FD ALUM N84-53-40E 687.51 TO EAST R/W LINE OF CAMPUS ST.; THENCE S7-57-50E 33.02 TO SOUTH R/W LINE OF HIGH ST.
- 1984 COMBS CSM VOL 11 PG 433 FD ALUM MON. N84-53-40E 195.11 TO EAST R/W LINE OF ROGERS ST; THENCE S8-00E 32.93 TO SOUTH R/W LINE OF HIGH ST

SEAL
Emboss

SHEET 2 OF 6

Donald Barnes
Mar 28, 2011

CORNER CODE V-15(3)

MI608

S1/4CORSEC27

- 1984 COMBS CSM VOL 11 PG 426 FD ALUM. N84-53-40E 996.51 TO WEST R/W LINE OF COLUMBUS ST; THENCE N2-03W 32.80 TO NORTH R/W LINE OF HIGH ST.
- 1984 BARNES V-15 RD CONSTRUCTION BOKE TOP SECTION MONUMENT. UTILITY POLES WERE MOVED. REFERENCE CORNER.
- 1984 BARNES V-15(2) RD CONSTRUCTION BROKE TOP HALF OF ALUM. MON. REMOVED BOTTOM & SET POLY. MON. FD ALL 4 REFERENCE IRON PIPES. CORNER IN CENTER OF PVMT.
- 1984 COMBS CSM VOL 14 PG 421 FD ALUM @ S 1/4 & SW CORNERS OF SEC 27. 2630.80 BETWEEN CORNERS.
- 1985 COMBS CSM VOL 12 PG 233 FD ALUM. EASTERLY 980.00 TO WEST R/W LINE OF COLUMBUS ST.
- 1986 COMBS CSM VOL 12 PG 424 FD ALUM. N84-53-40E 687.51 TO EAST R/W LINE OF CAMPUS ST; THENCE S7-57-50E.
- 1986 COMBS #12889 STATES NOTHING ABOUT MON.
- 1986 SCHROEDER CSM VOL 12 PG 493 STATES NOTHING ABOUT MON. S1-10-00W 2653.89 TO CENTER OF SEC 34; THENCE S86-42-30E.
- 1988 DOT #11136 (STH26) CALLS FOR ALUM. 283,529.98; 2,283,116.18 AND @ SE COR SEC 27 A PK 283,455.01; 2,285,743.40. THE INVERSE IS S88-21-56E 2628.29
- 1991 COMBS CSM VOL 15 PG 90 ALUM REC 2656.52 TO REBAR @ CENTER OF SEC 27
- 1992 COMBS CSM VOL 16 PG 47 ALUM. MON 2628.28 TO NE COR SEC 34.
- 1993 WOODMAN CSM VOL 17 PG 27 FD ALUM. N85-02-52E TO FD PK @ SE COR SEC 27; THENCE N8-06-57W 560.14
- 1994 COMBS CSM VOL 18 PG 4 FD ALUM N84-53-40E 693.94; THENCE N5-00E 33.31 TO NORTH R/W LINE OF HIGH ST. USED SE COR SEC 27 FOR LINE.
- 1996 WOODMAN CSM VOL 19 PG 185 ALUM. MON. S7-56-07E TO SET PIPE @ CENTER OF SEC 34. 2636.24 FROM CENTER OF SEC 34 TO CUT STONE @ E 1/4 COR SEC 34. FROM CENTER OF SEC 34 S84-53-26W 2632.96 TO CUT STONE @ W 1/4 COR SEC 34.
- 1998 COMBS CSM VOL 22 PG 39 ALUM MON. N86-37-40W 2631.26 TO ALUM @ SW COR SEC 27
- 1999 KREBS #9296 STATES NOTHING ABOUT MON.
- 1999 COMBS CSM VOL 23 PG 121 ALUM MON. N87-29-10W 2637.45 TO PK @ NW COR SEC 34; THENCE SOUTH 35.03 TO SOUTH R/W LINE OF HIGH ST.
- 2000 COMBS CSM VOL 23 PG 293 ALUM MON. N86-38W 2630.81 TO ALUM @ SW COR SEC 27
- 2000 LATHROP CSM VOL 24 PG 161 ALUM. N86-38-30W 2630.71 TO ALUM @ SW COR SEC 27
- 2002 CARLSON #14606 STATES NOTHING ABOUT MON.
- 2002 CARLSON P32 PG 556 "TOWER HILL ESTATES PLAT NO. 1" FD BRASS CAP. N87-34-51W 2630.83 TO FD BRASS CAP @ SW COR SEC 27. FROM N 1/4 COR SEC 34 THENCE S00-36-42E 433.45 TO MON.
- 2002 LEUENBERGER CSM VOL 25 PG 387 STATES NOTHING ABOUT MON. N86-34-19W 2630.77 TO SW COR SEC 27. @ S 1/4 COR SEC 27 N1-05-30W 1635.50 TO PROPERTY COR.
- 2003 LATHROP CSM VOL 26 PG 182 FD ALUM. MON. N86-47-12W 2630.74 TO FD ALUM. @ SW COR SEC 27
- 2004 GRIFFIN P32 PG 649 "TOWER HILL ESTATES PLAT #2" FD BRASS CAP. S0-36-42E 2653.37' TO 1" PIPE @ CENTER OF SEC 34.

SEAL
Emboss

Donald Brunas
Mar 28, 2011

SHEET 3 OF 6

CORNER CODE V-15(3)

- 2004 LATHROP GSM VOL 28 PG 13 FD ALUM MON. N86-38W
2630.81 TO FD ALUM @ SW COR SEC 27. @ S 1/4 COR SEC
27 THENCE N86-38W 652.23; THENCE NO-00-25E 33.05 TO
NORTH R/W LINE OF HIGH ST.
- 2007 LATHROP GSM VOL 31 PG 261 FD ALUM MON @ S 1/4 & SW
CORNERS OF SEC 27. 2630.71 BETWEEN CORNERS.
- 2007 LATHROP GSM VOL 34 PG 134 FD ALUM MON @ S 1/4 S87-
43-55E 2628.28 TO FD ALUM @ SE CORNERS OF SEC 27. @
SE COR SEC 27 THENCE N87-43-55W 871.0; THENCE N3-34-
57E 396.0 TO PROPERTY CORNER.
- 2009 LATHROP GSM VOL 33 PG 193 FD ALUM. S87-43-55E
2628.26 TO ALUM @ SE COR SEC 27

SEP 16 2010 I TOLD DOT CONTRACT ENGINEER THAT I WOULD
PLACE 4 SMALL AND THE INTERSECTION OF A STRING LINE
BETWEEN THE OPPOSITE MAG NAILS WOULD BE THE CORNER
LOCATION. I PAINTED THE NAILS & THE CORNER LOCATION. AFTER
THEIR CONTRACTOR PLACED THE MONUMENT I WOULD CHECK THE
LOCATION

MARCH 21, 2011, I RETURNED TO THE LOCATION AND FOUND NO
MONUMENT BUT I DID FIND THE 4 MAG NAILS. CONTACTED THE DOT
ABOUT THE FAILURE OF THEIR CONTRACTOR TO INSTALL A
MONUMENT.

C) Was the corner restored through acceptance of (1) an obliterated evidence location, or, (2) a found perpetuated location?

ACCEPTED TIES

D) Describe any material discrepancy between the location of the corner as restored or reestablished and the location of that corner as previously restored or reestablished by distance and direction. Show the discrepancy on the plan view drawing under (a), above. Show the distances between the corner as previously restored or reestablished and (1) the corner as restored or reestablished, and (2) to at least 4 of the witness monuments shown on the drawing in (a), above.

(E) Was the corner reestablished through lost corner proportionate methods? If so, show the method, including the directions and distances to other public land survey corners used as evidence or used for proportioning the corner location.

I, **Donald Barnes**, hereby certify that the corner location as identified by the corner code index was determined by me under my direction and control and that this U.S. Public Land Survey Monument Record is correct and complete to the best of my knowledge and belief.

SEAL
Donald Barnes
MAR 28, 2011

SHEET 4 OF 6

CORNER CODE V-15(3)

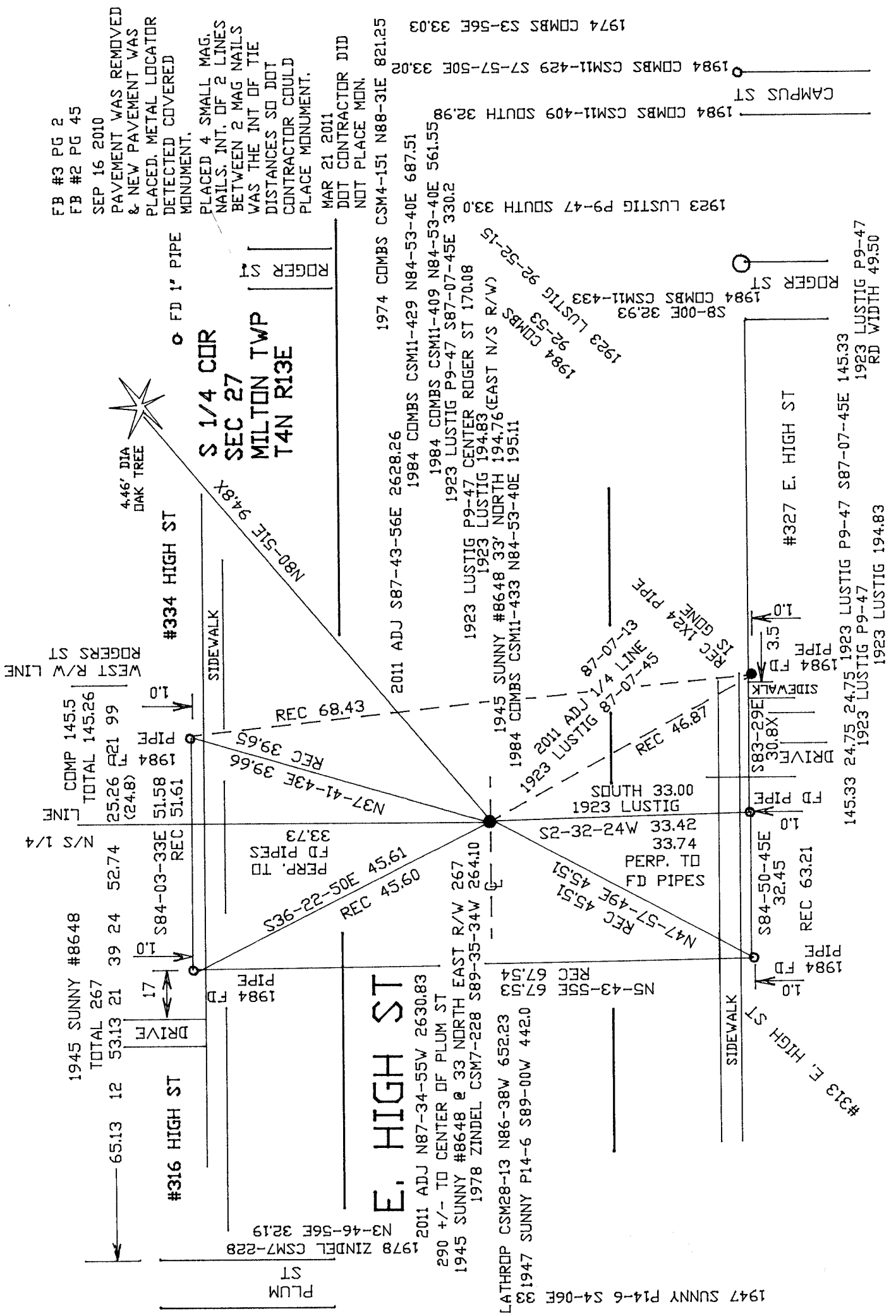
A.E. 7.08 REQUIREMENT

Ronald
Cainos
Mar 28, 2011

(3)51-V

SHEET 5 OF 6

2004 LATHRDP CSM28-13 NO-00-25F 33.05
2004 LATHRDP CSM28-13 NO-00-25F 33.05
EMBOSSED SEAL



FB #3 PG 2
FB #2 PG 45
SEP 16 2010
PAVEMENT WAS REMOVED
& NEW PAVEMENT WAS
PLACED. METAL LOCATOR
DETECTED COVERED
MONUMENT.
PLACED 4 SMALL MAG.
NAILS, INT. OF 2 LINES
BETWEEN 2 MAG NAILS
WAS THE INT OF TIE
DISTANCES SO DOT
CONTRACTOR COULD
PLACE MONUMENT.
MAR 21 2011
DOT CONTRACTOR DID
NOT PLACE MON.

E. HIGH ST
2011 ADJ N87-34-55W 2630.83
290 +/- TO CENTER OF PLUM ST
1945 SUNNY #8648 @ 33 NORTH EAST R/W 267
1978 ZINDEL CSM7-228
1974 COMBS CSM4-151 N88-31E 821.25

1945 SUNNY #8648
TOTAL 267
65.13 12 53.13 21 39 24 52.74
DRIVE 17
S84-03-33E REC 51.58
N/S 1/4 25.26 R21 99
LINE 25.26 R21 99
TOTAL 145.26
COMP 145.5
WEST R/W LINE
ROGERS ST

1984 SUNNY #8648
TOTAL 267
65.13 12 53.13 21 39 24 52.74
DRIVE 17
S84-03-33E REC 51.58
N/S 1/4 25.26 R21 99
LINE 25.26 R21 99
TOTAL 145.26
COMP 145.5
WEST R/W LINE
ROGERS ST

#334 HIGH ST
4.46' DIA
OAK TREE
S 1/4 COR
SEC 27
MILTON TWP
T4N R13E
FD 1" PIPE
SIDEWALK
REC 68.43
REC 39.65
REC 45.60
REC 45.51

1945 SUNNY #8648
TOTAL 267
65.13 12 53.13 21 39 24 52.74
DRIVE 17
S84-03-33E REC 51.58
N/S 1/4 25.26 R21 99
LINE 25.26 R21 99
TOTAL 145.26
COMP 145.5
WEST R/W LINE
ROGERS ST

1945 SUNNY #8648
TOTAL 267
65.13 12 53.13 21 39 24 52.74
DRIVE 17
S84-03-33E REC 51.58
N/S 1/4 25.26 R21 99
LINE 25.26 R21 99
TOTAL 145.26
COMP 145.5
WEST R/W LINE
ROGERS ST

1945 SUNNY #8648
TOTAL 267
65.13 12 53.13 21 39 24 52.74
DRIVE 17
S84-03-33E REC 51.58
N/S 1/4 25.26 R21 99
LINE 25.26 R21 99
TOTAL 145.26
COMP 145.5
WEST R/W LINE
ROGERS ST

1945 SUNNY #8648
TOTAL 267
65.13 12 53.13 21 39 24 52.74
DRIVE 17
S84-03-33E REC 51.58
N/S 1/4 25.26 R21 99
LINE 25.26 R21 99
TOTAL 145.26
COMP 145.5
WEST R/W LINE
ROGERS ST

1945 SUNNY #8648
TOTAL 267
65.13 12 53.13 21 39 24 52.74
DRIVE 17
S84-03-33E REC 51.58
N/S 1/4 25.26 R21 99
LINE 25.26 R21 99
TOTAL 145.26
COMP 145.5
WEST R/W LINE
ROGERS ST

1945 SUNNY #8648
TOTAL 267
65.13 12 53.13 21 39 24 52.74
DRIVE 17
S84-03-33E REC 51.58
N/S 1/4 25.26 R21 99
LINE 25.26 R21 99
TOTAL 145.26
COMP 145.5
WEST R/W LINE
ROGERS ST

1945 SUNNY #8648
TOTAL 267
65.13 12 53.13 21 39 24 52.74
DRIVE 17
S84-03-33E REC 51.58
N/S 1/4 25.26 R21 99
LINE 25.26 R21 99
TOTAL 145.26
COMP 145.5
WEST R/W LINE
ROGERS ST

W 1/4 COR

COMPUTED INT OF
1/4 LINES

W 1/4
COR

2011 ADJ S87-41-03E 2631.16
1976 HELD 2631.34
1958 BATTERMAN #8855 S86-42-20E 2626.80

1938 SUNNY ASSESSORS PLAT 2645.28
1976 HELD 2621.19
2011 ADJ NO-57-38W 2653.15

CENTER

2011 ADJ S87-41-03E 2631.28
1938 SUNNY ASSESSORS PLAT 2627

1958 BATTERMAN 86-42-38
1958 BATTERMAN 86-42-20
1958 BATTERMAN 93-16-35
1958 BATTERMAN 93-16-40
1958 BATTERMAN 93-23-30
1958 BATTERMAN 93-23-30
1958 BATTERMAN 86-37-17
1958 BATTERMAN 86-37-38

SEC 27

1319.03 S87-29-45E 1970 COMBS CSM1-277
1965 CHENEY P23-5 1310.75
1970 COMBS CSM1-277 N87-29-45W 1312.04
1970 COMBS CSM1-277 FD PIPE 1311.73

1958 BATTERMAN #8855 NO-01E 2656.23
1983 BARNES NO-55-38W (2652.06) 2656.90
1992 COMBS CSM15-90 2656.52
2011 ADJ NO-57-38W 2656.90
1958 BATTERMAN 86-37-17
1958 BATTERMAN 86-37-38
1958 BATTERMAN 93-16-35
1958 BATTERMAN 93-16-40
1958 BATTERMAN 93-23-30
1958 BATTERMAN 93-23-30

SEC 27

1958 BATTERMAN #8855 NO-01E 2656.23
1983 BARNES NO-55-38W (2652.06) 2656.90
1992 COMBS CSM15-90 2656.52
2011 ADJ NO-57-38W 2656.90
1958 BATTERMAN 86-37-17
1958 BATTERMAN 86-37-38
1958 BATTERMAN 93-16-35
1958 BATTERMAN 93-16-40
1958 BATTERMAN 93-23-30
1958 BATTERMAN 93-23-30

E 1/4
COR

SE
COR

SW
COR

1834 HARRISON 2613.60
1871 RUGER VAR3-48 2628.84
1958 BATTERMAN S86-37E 2630.40
1970 COMBS CSM1-277 2631.07
1983 BARNES S87-33-02E 2630.84
1984 COMBS CSM14-421 2630.80
1998 COMBS CSM22-39 2631.26
1999 COMBS CSM23-121 2637.45
2000 LATHROP CSM24-161 2630.71
2002 CARLSON P32-556 N87-34-51W 2630.83
2002 LEUENBERGER CSM25-387 2630.77
2003 LATHROP CSM26-182 2630.74
2004 LATHROP CSM31-261 2630.71
2004 LATHROP CSM28-13 2630.81
2011 ADJ S87-34-54E 2630.83

2002 CARLSON P32-556 N87-34-51W 2630.83
2002 LEUENBERGER CSM25-387 2630.77
2003 LATHROP CSM26-182 2630.74
2004 LATHROP CSM31-261 2630.71
2004 LATHROP CSM28-13 2630.81
2011 ADJ S87-34-54E 2630.83

2002 CARLSON P32-556 S00-36-42E
2004 GRIFFIN P32-649 2653.37
2002 CARLSON P32-556 S00-36-42E
1986 SCHROEDER CSM12-493 S1-10-00W 2653.89
1983 SCHROEDER CSM11-239 S1-10-00W 2653.89
1938 SUNNY ASSESSORS PLAT 2648.58

1834 HARRISON 2613.60
1871 RUGER VAR3-42 2627.46
1932 SUNNY 2628.14
1983 BARNES S87-42-01E 2628.28
1988 DOT SP S88-21-56E 2628.29
1992 COMBS CSM16-47 2628.28
2007 LATHROP CSM34-134 S87-43-55E 2628.28
2009 LATHROP CSM34-134 S87-43-55E 2628.28
2009 LATHROP CSM33-193 2628.26
2011 ADJ S87-43-56E 2628.26

1834 HARRISON 5227.20
1871 RUGER 5256.30
1983 BARNES 5259.12

Donald Barnes
EMBOSSED

March 28, 2011

SEC 34

COMPUTED INT OF
1/4 LINES

87-07-13
1923 LUSTIG

SEC 34

SHEET 6 OF 6

CENTER

1938 SUNNY ASSESSORS PLAT 2621.52
2011 ADJ S87-46-54E 2636.42

E 1/4
COR

V-15(3)