

# U.S. PUBLIC LAND SURVEY MONUMENT RECORD

For Public Land Survey Corners In:  
T. 4 N. R. 12 E. 4th P.M.  
CORNER CODE INDEX

WI ADMINISTRATIVE CODE A-E 7.08 REQUIREMENT  
REV 10/23/2004 USMONREC.DWG

A	1	2	3	4	5	6	7	8	9	10	11	12	13	14	15	16	17	18	19	20	21	22	23	24	25	A
B																										B
C	6																									C
D																										D
E																										E
F																										F
G	7																									G
H																										H
J																										J
K	18																									K
L																										L
M																										M
N																										N
O																										O
P	19																									P
Q																										Q
R																										R
S																										S
T	30																									T
U																										U
V																										V
W																										W
X	31																									X
Y																										Y
Z																										Z
	1	2	3	4	5	6	7	8	9	10	11	12	13	14	15	16	17	18	19	20	21	22	23	24	25	

PLACE MONUMENT SYMBOL  AT PROPER LOCATION ON ABOVE INDEX

FULTON TWP  
ROCK COUNTY WI

IF AVAILABLE  
ROCK COUNTY COORDINATES PREFERRED

North \_\_\_\_\_ Elev. \_\_\_\_\_

East \_\_\_\_\_

Hor. Datum \_\_\_\_\_ Vert. Datum \_\_\_\_\_

LATITUDE \_\_\_\_\_ ELLIPS. HT. \_\_\_\_\_

LONGITUDE \_\_\_\_\_

NAD83(91) \_\_\_\_\_ NETWORK ADJ. YR \_\_\_\_\_

GPS (X) \_\_\_\_\_ TRAVERSE (X) \_\_\_\_\_

BASED ON THE FOLLOWING CONTROL:  
\_\_\_\_\_

CORNER MONUMENT

WITNESS MONUMENT

(a) BEARINGS ARE BASED ON: \_\_\_\_\_

FIELD BOOK \_\_\_\_\_ PAGE # \_\_\_\_\_

SHEET 1 OF 4

SHOW A PLAN VIEW DRAWING DEPICTING THE CORNER MONUMENT AND SURROUNDING PHYSICAL FEATURES, INCLUDING THE EXCAVATION AREA AND DEPTH.

PLANNING & ZONING COMMITTEE ADOPTED THIS FORM ON 12/2/1982

CORNER CODE E-5(3)

FU523^

(B) Describe any record evidence, monument evidence, occupational evidence, testimonial evidence or any other material evidence you considered, and whether the monument was found or placed.

- 1834 (APR 4) HARRISON WEST ON RAND. BET SECS 6 & 7  
2640 TEMPY 1/4 SEC COR.  
5316.3 INT. W. BDY 29.7' N OF P LAND ROLLING 2<sup>ND</sup> RATE TIMBER  
ALL BURR O. UNDERGROWTH ? GRASS & WEEDS  
COR. EAST  
2676.3 QUARTER SEC COR. {BURR O 12 S80W 26.4' RED O. 10  
N54E 76.56' BURR O 12, RED O 20} MARKED  
4579.74 BURR O 12 IN DIAMETER  
5316.3 SEC COR.
- 1834 (APR 4<sup>TH</sup>) HARRISON NORTH BETWEEN SECS 5 & 6  
1056 POND  
1488.96 LEFT SAME EXT. WEST  
2640 QUARTER SEC COR {BURR O 18 S45E 81.84' RED O 10  
N87E 48.18' BURR O 18, RED O 10} MARKED  
3193.08 ENTER MARSH  
5271.42 INT. N BDG 66' E OF POST IN MARSH {BURR O 18 S8E  
86.46'  
LAND & ? ?
- 1834 (APR 4) HARRISON EAST ON RAND BET. SECS 5 & 8  
66 POND  
1518 LEFT SAME BEARING NE  
2640 TEMPY 1/4 SEC COR  
5346 INT. E BDY 27.72' N OF P. LAND & SAME  
WEST BET 5 & 8  
2673 QUARTER SEC COR {BURR O 12 S44E 23.1' RED O 12  
N54W 25.08' BURR O 12 RED O 12} MARKED  
5346 INT. SEC COR
- 1834 (APR) HARRISON NORTH BET SECS 7 & 8  
2376 LEAVE PRAIRIE  
2640 QUARTER SEC COR {BURR O 20 N10E 81.18' BURR O 20  
N89E 112.2' BURR O 20 BURR O 20 } MARKED  
3220.8 BURR O 12 IN DIAM  
4070.88 BURR O 18 IN DIAM  
5280 COR TO SEC 5,6,7,8 {BURR O 12 S38W 44.22' W.O. 20  
S48E 58.08' BURR O 12 N50E 60.72' BURR O 12 N52W  
77.22' LAND ROLLING 2<sup>ND</sup> RATE WITH WHITE & BURR OAK  
TIMBER - PRAIRIE SAME AS BEFORE
- 1847 TWP RD REC BK 1 PG 10 ALSO A RD, THE CENTER LINE OF WHICH IS  
DESCRIBED AS FOLLOWS TO WIT: PLACE OF BEGINNING IS THE  
QUARTER SECTION POST BETWEEN SECTION 5 & 8 IN T4N R12E FROM  
SAID POST RUN ON SECTION LINE S81-15W 957' THENCE S54W 858',  
THENCE N83-45W 1130.58' TO SEC COR [NW COR SEC 8] THENCE ON  
SECTION LINE BETWEEN 6 & 7 S81-15W 5315.64' TO THE TOWN LINE,  
MAKING 8261.22'. IN WITNESS WHEREOF WE HAVE HEREUNTO SET  
OUR HANDS AT FULTON ON THE 12 DAY OF OCT. 1847 GOODRICH,  
PHILIP & DAVOLT MARK COMMISSIONER OF HIGHWAYS.
- 1847 PIERCE TWP RD BK 1 PG 10 SURVEYED JUNE 2<sup>ND</sup> 1847 A RD THE  
CENTER LINE OF WHICH IS DESCRIBED AS FOLLOWS TO WIT; PLACE OF  
BEGINNING IS THE 1/4 SEC POST BETWEEN SEC 5 & 8 IN T4 OF R12  
FROM SAID POST, RUN ON SEC. LINE S81-15W 957.00' THEN S54W?  
858' THEN N83-45W 1130.58' TO SEC COR [NW COR SEC 8], THE ON  
SEC LINE BETWEEN 6 & 7 S81-15W 5315.64 TO THE TOWN LINE  
MAKING 8,261.22'.
- 1856 TWP RD REC BK 1 PG 33 AT A MEETING OF THE SUPERVISORS  
OF SAID TOWN AGREEABLE TO PREVIOUS NOTICE, AND HAVING  
EXAMINED AND DELIBERATED UPON THE SUBJECT HEREIN  
EMBRACED, IT IS ORDERED AND DETERMINED BY THE SAID  
SUPERVISORS, THAT A HIGHWAY BE LAID OUT IN SAID TOWN, OF THE  
WIDTH OF 66', AND HAVE CAUSED A SURVEY THEREOF TO BE MADE:,  
AS FOLLOWS: THE CENTER LINE OF THE SAID HIGHWAY IS TO  
COMMENCE AT THE 1/4 POST ON THE NORTH LINE OF SEC 8 OF SAID  
TOWN; THENCE EAST ON

SHEET 1 OF 4  
CORNER CODE E-5(3)

*Ronald Barnes*  
May 11 2006

FU523

THE NORTH LINE OF SEC 8 & 5 3529.02 TO A STAKE; THENCE S54E 2877.6' TO A STAKE ON THE HIGHWAY LEADING FROM THE DEPOT AT EDGERTON TO THE INDIAN FORD [GTH F], FROM WHICH A BLACK OAK BEARS S32E 1716' AND A BLACK OAK S40W 67.32 AND THE WHOLE LENGTH OF THE RD IS 6406.62'. COURSE GIVEN ACCORDING TO THE TRUE MERIDIAN. VARIATION OF NEEDLE 8.

- 1871 RUGER VOL 2 PG 79. & 1069 FOUND OLD STAKE & HH STONES, ALSO FOUND STUMPS OF S.W. & SE BTS & WHERE STUMPS OF N.E. BT HAD BEEN DUG OUT. DROVE STAKE DEEP & PUT ON TOP OF IT RED HH STONE 12X9X8 SURROUNDED 4 HH STONES. VAR 6-35 2671.68 TO S 1/4 COR SEC 6.
- 1876 RUGER #1069 VAR 6-37 TO S 1/4 COR SEC 6. REST OF INFORMATION IS SAME AS IN VOL 2 PG 79
- 1951 ELY #1088 STATES NOTHING ABOUT TYPE OF MON.
- 1968 BATTERMAN JR. VOL 4 PG 357 SET 1" PIPE IN BLACK TOP & REFERENCED SAME. N/S 304,722.22; E/W 2,238,254.18 (WP&L).
- 1971 TREFZ #1041 IP FOUND
- 1971 TREFZ CSM VOL 2 PG 23 FD PIPE IN CENTER OF STH 59, EAST 325.00 TO FD PK THEN EAST 100.00 TO SET PK. LOT SURVEY ON NORTH SIDE OF RD
- 197? WPL #1044 STONE OR CONC. MON - LEGEND. ANGLE 89-52-18 FROM W 1/16<sup>TH</sup> COR OF SW 1/4 OF SEC 5 TO S 1/4 COR SEC 5, N89-10-02E (TRUE NORTH) 2730.28 TO S 1/4 COR SEC 5, NO-42-16W (TRUE NORTH) 1330.92 TO W 1/16<sup>TH</sup> COR OF SW 1/4 SEC 5.
- 1974 WP&L VOL 6 PG 303 N88-34-35E 2730.35 TO S 1/4 COR SEC 5, S88-52-02W 2678.34 TO S 1/4 COR SEC 6, N1-13-34W 2661.73 TO W 1/4 COR SEC 5, S1-57-41E 2646.08 TO W 1/4 COR SEC 8, & NO-13-34E 1330.56 TO W 1/16<sup>TH</sup> COR OF SW 1/4 SEC 5.
- 1975 WP&L #1076 304,722.22; 2,238,254.18 N88-34-34E 2730.35 TO N 1/4 COR SEC 8 & S1-57-41E 2646.07 TO W 1/4 COR SEC 8
- 1978 SANDNES VOL 5 PG 448 N/S 304,722.22; E/W 2,238,254.18.
- 1980 BARNES #9703 STATES NOTHING ABOUT TYPE OF MON. 2730.26 TO S 1/4 COR SEC 5. ACCIDENT SURVEY
- 1982 COMBS #1062 FOUND IRON PIPE
- 1983 BARNES VOL 6 PG 303 WPL 304,722.22; 2,238,254.18 N88-34-35E 730.35 TO S 1/4 COR SEC 5, S1-57-41E 2646.08 TO W 1/4 COR SEC 8, S88-52-02W 2678.34 TO S 1/4 COR SEC 6, N1-13-34W 1330.86 TO 1/16<sup>TH</sup> COR, N1-33-34W 2661.73 TO W 1/4 COR SEC 5.
- 1991 BARNES E-5 FOUND PK & REFERENCED SAME. FOUND 1" PIPE 0.4' DEEP. DID NOT ACCEPT NOR REJECT FOUND MONUMENT. CORNER REFERENCED FOR ROAD CONSTRUCTION PROJECT.
- 1998 SCHROEDER CSM VOL 21 PG 464 STATES NOTHING ABOUT TYPE OF MON.
- 1999 BARNES E-5(1) FOUND REFERENCE MONUMENTS.
- 1999 BARNES E-5(2) FD PK HOLE THAT IS IN HARMONY WITH REFERENCE MONUMENTS. ESTABLISHED COUNTY COORDINATES FROM WPL GPS STATIONS. 323,692.55 N/S; 469,351.18 E/W
- 2001 COMBS CSM VOL 24 PG 87 FD PIPE 2730.20 TO N 1/4 COR SEC 8

FD 1" IRON PIPE & REFERENCE MONUMENTS.

C) Was the corner restored through acceptance of (1) an obliterated evidence location, or, (2) a found perpetuated location?

ACCEPTED FOUND PERPETUATED LOCATION.

SHEET 2 OF 4

CORNER CODE E-5(3)

Donall Barnes  
May 11 2006

FU523

D) Describe any material discrepancy between the location of the corner as restored or reestablished and the location of that corner as previously restored or reestablished by distance and direction. Show the discrepancy on the plan view drawing under (a), above. Show the distances between the corner as previously restored or reestablished and (1) the corner as restored or reestablished, and (2) to at least 4 of the witness monuments shown on the drawing in (a), above.

**NO DISCREPANCIES**

(E) Was the corner reestablished through lost corner proportionate methods? If so, show the method, including the directions and distances to other public land survey corners used as evidence or used for proportioning the corner location.

I, **Donald Barnes**, hereby certify that the corner location as identified by the corner code index was determined by me under my direction and control and that this U.S. Public Land Survey Monument Record is correct and complete to the best of my knowledge and belief.

seal  
*Donald Barnes*  
May 11 2006

emboss

SHEET 3 OF 4

CORNER CODE **E-5(3)**

**A-E 7.08 REQUIREMENT**

STATION  
SECTION  
TAN PIPE  
RIFLE  
CORNER  
TWP

FD WPL G-1 DISK  
WITH CUT 'X'

S87-33-24E 46.53

FD WPL  
T BAR

S83-31-49E 44.73

FD 1" PIPE

S71-47-28E 107.42

WPL #81  
FD T BAR GPS  
BENT, REPLACED  
WITH 3/4X24 RERD

1999 DCT N88-00-54W 1080.43  
N88-00-51W 1080.43

STH 59

WPL #80 GPS  
FD T BAR

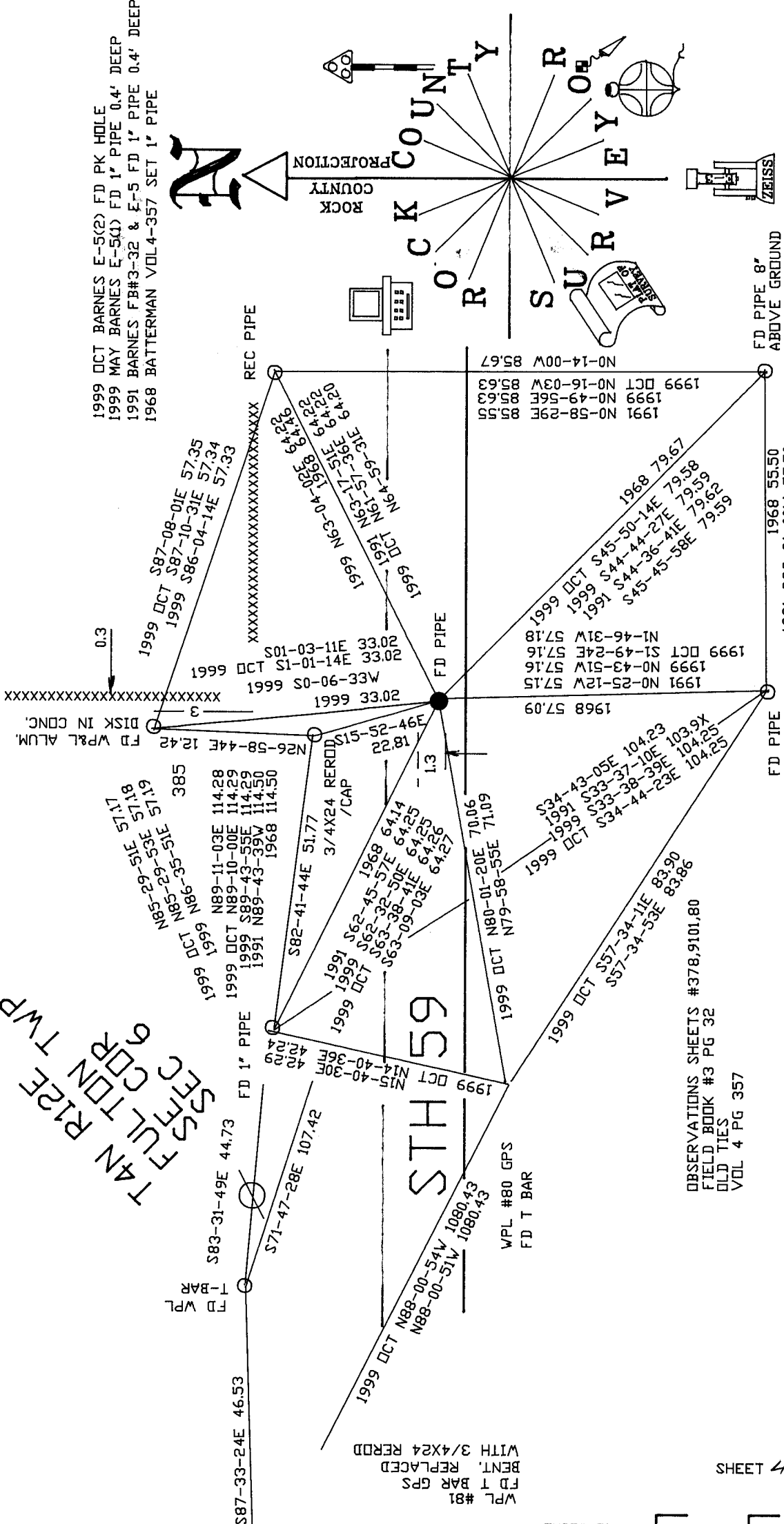
OBSERVATIONS SHEETS #378,9101,80  
FIELD BOOK #3 PG 32  
OLD TIES  
VOL 4 PG 357

SHEET 4 OF 4

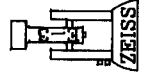
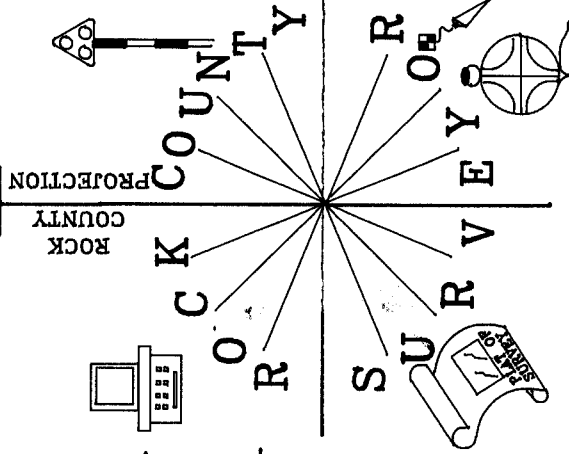
EMBOSSED  
SEAL

*Ronald Barnes*  
May 11 2006

E-5(3)



1999 DCT BARNES E-5(2) FD PK HOLE  
1999 MAY BARNES E-5(1) FD 1" PIPE 0.4' DEEP  
1991 BARNES FB#3-32 & E-5 FD 1" PIPE 0.4' DEEP  
1968 BATTERMAN VOL4-357 SET 1" PIPE



FD PIPE 8"  
ABOVE GROUND

1991 NO-58-29E 88.88  
1999 NO-49-56E 85.63  
1999 DCT NO-16-03W 85.67  
1991 NO-14-00W 85.67

FD PIPE

FD PIPE

FD PIPE

FD PIPE

FD PIPE

FD PIPE

FD PIPE

FD PIPE

FD PIPE

FD PIPE

FD PIPE

XXXXXXXXXXXXXXXXXXXXXXXXXXXX

WP&L SUBSTATION SHEEPSKIN