

# U.S. PUBLIC LAND SURVEY MONUMENT RECORD

For Public Land Survey Corners In:  
T. 4 N. R. 12 E. 4th P.M.  
CORNER CODE INDEX

WI ADMINISTRATIVE CODE A-E 7.08 REQUIREMENT  
REV 10/23/2004 USMONREC.DWG

FULTON TWP

ROCK COUNTY WI

IF AVAILABLE  
ROCK COUNTY COORDINATES PREFERRED

A	1	2	3	4	5	6	7	8	9	10	11	12	13	14	15	16	17	18	19	20	21	22	23	24	25	A
B																										B
C	6																									C
D																										D
E																										E
F																										F
G	7																									G
H																										H
J																										J
K	18																									K
L																										L
M																										M
N																										N
O																										O
P	19																									P
Q																										Q
R																										R
S																										S
T	30																									T
U																										U
V																										V
W																										W
X	31																									X
Y																										Y
Z																										Z

PLACE MONUMENT SYMBOL  AT PROPER LOCATION ON ABOVE INDEX

North \_\_\_\_\_ Elev. \_\_\_\_\_

East \_\_\_\_\_

Hor. Datum \_\_\_\_\_ Vert. Datum \_\_\_\_\_

LATITUDE \_\_\_\_\_ ELLIPS. HT. \_\_\_\_\_

LONGITUDE \_\_\_\_\_

NAD83(91) \_\_\_\_\_ NETWORK ADJ. YR \_\_\_\_\_

GPS (X) \_\_\_\_\_ TRAVERSE (X) \_\_\_\_\_

BASED ON THE FOLLOWING CONTROL:

CORNER MONUMENT

WITNESS MONUMENT

BEARINGS ARE BASED ON: \_\_\_\_\_

FIELD BOOK \_\_\_\_\_ PAGE # \_\_\_\_\_

SHEET 1 OF 4

SHOW A PLAN VIEW DRAWING DEPICTING THE CORNER MONUMENT AND SURROUNDING PHYSICAL FEATURES, INCLUDING THE EXCAVATION AREA AND DEPTH.

PLANNING & ZONING COMMITTEE ADOPTED THIS FORM ON 12/2/1982

CORNER CODE A-7(3)

FU504

(B) Describe any record evidence, monument evidence, occupational evidence, testimonial evidence or any other material evidence you considered, and whether the monument was found or placed.

1833 (SEP 20) MULLETT BRINK EAST ON SOUTH SIDE SECTION 32  
12E 5N

2508 STREAM ? COURSE SE  
2640 BUR OAK 10 N16E 306.24' BUR OAK 12 N1W  
450.12'  
2937 LEAVE WET PRAIRIE  
5280 SET POST CORNER SECTIONS 32 & 33 BUR OAK 22  
N52W 270.6' BUR OAK 10 N82E 223.74' LAND  
LEVEL FIRST RATE FIRST 1/2 WET PRAIRIE LAST 1/2  
TIMBERED WITH WHITE BLACK AND BUR OAK

1844 STEBBINS TWP RD REC BK1 PG 4 SURVEY OF A RD IN THE  
TOWN OF FULTON LEADING FROM THE NORTH LINE OF ROCK  
COUNTY TO THE INDIAN FORD ON ROCK RIVER MADE APRIL  
19<sup>TH</sup> 1844. BEGINNING AT THE TERMINATION OF A RD LAID  
IN THE COUNTY OF DANE AT THE 1/4 POST ON THE SOUTH  
LINE OF SOUTH 32 T5N R12E, THENCE S 2 1/2E 5280' TO 1/4  
POST SOUTH LINE OF S. 5 T4N R12E; THENCE SOUTH 1 EAST  
3036' TO STAKE SET, POST OF BURR OAK, SOUTH 27W 6468',  
THENCE S32E 4966.5' TO A PT ON THE EAST LINE OF S 17,  
662.64' NORTH OF THE 1/4 POST, THENCE S1/2E 3302.64' TO  
THE SE COR OF S 17 AND THE WHOLE LENGTH OF THE ROAD  
IS 16, 585.14'. COURSES GIVEN ACCORDING TO THE TRUE  
MERIDIAN. VARIATION OF NEEDLE 7-2 HARRISON STEBBINS  
CO. SURVEYOR.

1866 WARNER VOL 6 PG 350 DANE COUNTY SURVEYOR VAR B  
2636.04 FROM S 1/4 COR SEC 32 TO GEN SEC 32, VAR B  
5272.08 FROM S 1/4 COR SEC 32 TO N 1/4 COR SEC 32, VAR  
B-30 1320.66 FROM S 1/4 COR SEC 32 TO S 1/16<sup>TH</sup> COR SE  
1/4 SEC 32, 2640 FROM S 1/4 COR SEC 32 TO SW COR SEC 32

1880 VOL 6 PG 333 THE FOLLOWING RD RECORD INFORMATION  
IS FROM A BK THAT IS IN THE COUNTY CLERK'S VAULT. THE  
RECORDS ARE FROM 1840-1888. 10,560' TO S 1/4 COR SEC  
B.

1911 HINTZE ALBION T5N R12E SET S 1/4 COR SEC 32 BY STAKE  
AND STONES AS SET BY WARNER IN 1866. N89-26E  
2665.0 TO SE COR SEC 32, S89-56W 2669.9' TO SW COR  
SEC 32. SOFT MAPLE 18" N24-30E 17.9' TELEGRAPH POLE  
N63-30W 69.4'. CORNER IS WEST OF N 1/4 COR SEC 5.  
FOUND QUARRY STONES SET AS FOUND BY MABBIT AND  
DUG DOWN AND FOUND REMAINS OF A LARGE ROTTEN  
STAKE. OFF SET OF TRANSIT LINE STAKE 8.2' S 24.5 WEST  
OF FENCE. [AT DANE COUNTY CORNERS, HINTZE INSTALLED  
CONCRETE MONUMENTS] THE DIFFERENCE IN BEARING OF  
LINES BETWEEN SECTION CORNERS GIVES THE TRUE  
DEVIATION FROM THE STRAIGHT LINE. SOME OF THE  
BEARINGS ARE MAGNETIC, CHECKED BY MEASUREMENTS,  
AND THE REST ARE TRANSIT LINES CHECKED BY  
OBSERVATIONS ON POLARIS. I HEREBY CERTIFY THAT THE  
DISTANCES AND BEARINGS ARE CORRECT ACCORDING TO  
SURVEY MADE UNDER THE PROVISIONS OF CHAPTER, 39  
SECTION 825 OF THE REVISED STATUTES OF WISCONSIN  
AND IN ACCORDANCE WITH THE RULES ESTABLISHED BY  
THE UNITED STATES LAND OFFICE.

1964 ELY #1046 SET 1" IRON STAKE 19.00 EAST OF S 1/4 COR  
SEC 32. SET 1" IRON STAKE AT S 1/4 COR SEC 32.

1965 WEIR #6550 IRON STAKE FOUND

1969 CARRINGTON #1039 1 1/4 " I.P. & EST. A LINE TO S 1/4 COR  
SEC 5

19?? WPL #1044 2646.40 TO NW COR SEC 5, 2643.49 TO NE  
COR SEC 5, S1-53-58E TRUE NORTH 5316.80 TO S 1/4 COR  
SEC 5, COORDINATE INVERSE BETWEEN N 1/4 & NE COR SEC  
5 IS 2643.35. C.I. & STONE OR CONC. AT S 1/4 COR SEC 32.

1975 WPL #6551 310,092.07N/S; 2,240,752.04E/W

SHEET 1 OF 4

CORNER CODE A-17(3)

*Donald Barnes*

5-9-2006

FU504

- 1976 BARNES VOL 5 PG 233 FD CI MON AS SET BY H. LEE. HE FOUND S 1/4 COR SEC 32 DANE COUNTY AND IT WAS 4' DEEP. 2' EAST OF EAST EDGE PVMT. REFERENCED SAME. FD 1 1/2 PIPE 28.20' TO THE SW. NORTH SIDE OF R/R TRACKS
- 1977 SANDSNES #1060 FD CI.
- 1978 BARNES VOL 5 PG 447 DATA PROVIDED BY ARDEN SANDSNES 310,090.84; 2,240,753.16
- 1979 SANDSNES VOL 5 PG 529 I DUG & FD CONCRETE MON. SET ALUM. MON TO SURFACE ABOVE FD CONC. MON. ORIGIN OF CONC. MON. HINTZ RESURVEY TOWN OF ALBION, DATED 1911. 44.86 EAST OF S 1/4 COR SEC 32. REFERENCED CORNERS. 310,090.84; 2,240,753.16 FOR N 1/4 COR SEC 5, 310,088.95; 2,240,708.35 FOR ALUM. @ S 1/4 COR SEC 32, 310,088.99; 2,240,698.23 FOR R/R SPIKE USED AS COR
- 1979 SANDSNES #6552 & A-7 DANE COUNTY TIE SHEET AT S 1/4 COR SEC 32 DUG AND FOUND CONCRETE MON. SET ALUM. MON TO SURFACE ABOVE FOUND CONCRETE MON. ORIGIN OF CONCRETE MON. HINTZE RESURVEY, TOWN ALBION, DATED 1911. 44.86' WEST OF N 1/4 COR SEC 5. S 1/4 COR SEC 32 49.49' NORTH CENTER OF R/R. & 3.5' WEST OF EAST PVMT EDGE N1/4 COR SEC 5 310,090.84; 2,240,753.16E/W, S 1/4 COR SEC 32 310,088.95N/S; 2,240,708.35E/W. R/R SPIKE USED AS S 1/4 COR IS WEST & COORDINATES ARE 310,088.99; 2,240,698.23.
- 1980 BARNES ACCIDENT SURVEY 5306.66 TO S 1/4 COR SEC 5. STATES NOTHING ABOUT TYPE OF MON.
- 1980 WEIR #1059 CALLS FOR A CI & 310,090.84; 2,240,753.16
- 1982 COMBS #1062 FD IRON PIPE
- 1983 BARNES VOL 6 PG 303 S2-29-24E 2653.26 TO INT. 1/4 LINES OF SEC 5, S2-29-24E 5302.45 TO S 1/4 COR SEC 5, N88-38-34E 2622.98 TO NE COR SEC 5, N87-35-05W 44.85 TO S 1/4 COR SEC 32, 310,090.84; 2,240,753.16; 310,088.95, 2,240,708.35 FOR S 1/4 COR SEC 32, COORDINATES PROVIDED BY SANDSNES. BEARINGS NAD27
- 1985 SANDSNES A-7(1) FD ROCK COUNTY MON @ N 1/4 COR SEC 5, FD DANE COUNTY MON AT S 1/4 COR SEC 32. CALLS FOR TIES. N 1/4 COR SEC 5 44.72 EAST OF S 1/4 COR
- 1988 WEIR CSM VOL 13 PG 394 FD CI 5306.40' TO S 1/4 COR SEC 6
- 1989 COMBS CSM VOL 13 PG 529 ALUM. MON 5306.59 TO S 1/4 COR SEC 6
- 1989 RADL CSM VOL 14 PG 116 HARRISON MON.
- 1990 COMBS #2107 ALUM. MON
- 1995 KARNS CSM VOL 18 PG 142 ROCK CO SEC MON. STATE PLANE 310,090.84; 2,240,753.16 2656.60 TO GEN OF SEC 5
- 2001 COMBS CSM VOL 25-PG10 FD ALUM. MON. 5306.69 TO S 1/4 COR SEC 5.
- 2004 MIRITZ A-7(2) FD HARRISON MON. LYING ON THE GROUND, DUG & FOUND REMNANT OF MON.-THIS MATCHES TIES BY ARDEN SANDSNES. REFERENCED SAME. 5306.75 TO A FD PK & CHECKED THE TIES OF BARNES DATED 5-6-99 @ S 1/4 COR SEC 5. 28.16' TO FOUND 1.5" IRON PIPE TO THE SW OF COR.
- 197? WEIR #1059 CI 310,090.84; 2,240,753.16
- 197? WPL #6551 310,092.07N/S; 2,240,752.04E/W

SHEET 2 OF 4  
CORNER CODE A-17(3)

*Donald Barnes*  
5-9-2006

FU504

1983 BARNES VOL 6 PG 303 310,088.95; 2,240,708.35  
COORDINATES FOR THE S 1/4 COR SEC 32

FD BROKEN CI MON & LATH AT N 1/4 COR SEC 5 & REF  
MONUMENTS AS SHOWN IN DRAWING. @ S 1/4 COR SEC 32, T5N  
R12E FD DECAYING ALUM MON. AND N13-05-25E 0.89' OF MON.  
AT RD SURFACE A PK. DROVE 3/4X24" REROD IN CENTER OF  
ALUM. MON. IN 1979 SANDSNES DUG AND FOUND CONCRETE  
MON. & HE SET ALUM. MON TO SURFACE ABOVE THE FOUND  
CONCRETE MON.

C) Was the corner restored through acceptance of (1) an obliterated evidence location, or, (2) a found perpetuated location?

ACCEPTED FD CI MON. @ N 1/4 COR SEC 5 & ALUM. MON. @ S 1/4  
COR SEC 32. THE FD & PERPETUATED 1 1/2" PIPE THAT IS S67-32-  
08E 19.48 OF THE S 1/4 COR SEC 32 IS PROBABLE THE ONE SET  
BY ELY IN 1964. IN HIS SURVEY MAP# 1046 HE STATES HE SET A  
1" IRON STAKE 19.00' EAST OF THE S 1/4 COR SEC 32 AT N 1/4 COR  
SEC 5.

D) Describe any material discrepancy between the location of the corner as restored or reestablished and the location of that corner as previously restored or reestablished by distance and direction. Show the discrepancy on the plan view drawing under (a), above. Show the distances between the corner as previously restored or reestablished and (1) the corner as restored or reestablished, and (2) to at least 4 of the witness monuments shown on the drawing in (a), above.

THERE IS A 0.89' DISCREPANCY BETWEEN THE FD PK AND ALUM.  
MON. @ THE S 1/4 COR SEC 32. ALSO THERE APPEARS TO BE  
DISCREPANCY BETWEEN ELY'S CORNER AND THE C.I. MONUMENT.

(E) Was the corner reestablished through lost corner proportionate methods? If so, show the method, including the directions and distances to other public land survey corners used as evidence or used for proportioning the corner location.

I, **Donald Barnes**, hereby certify that the corner location as identified by the corner code index was determined by me under my direction and control and that this U.S. Public Land Survey Monument Record is correct and complete to the best of my knowledge and belief.

*Donald Barnes*

Seal  
Emboss

5-9-2006

SHEET 3 OF 4

CORNER CODE **A-7(3)**

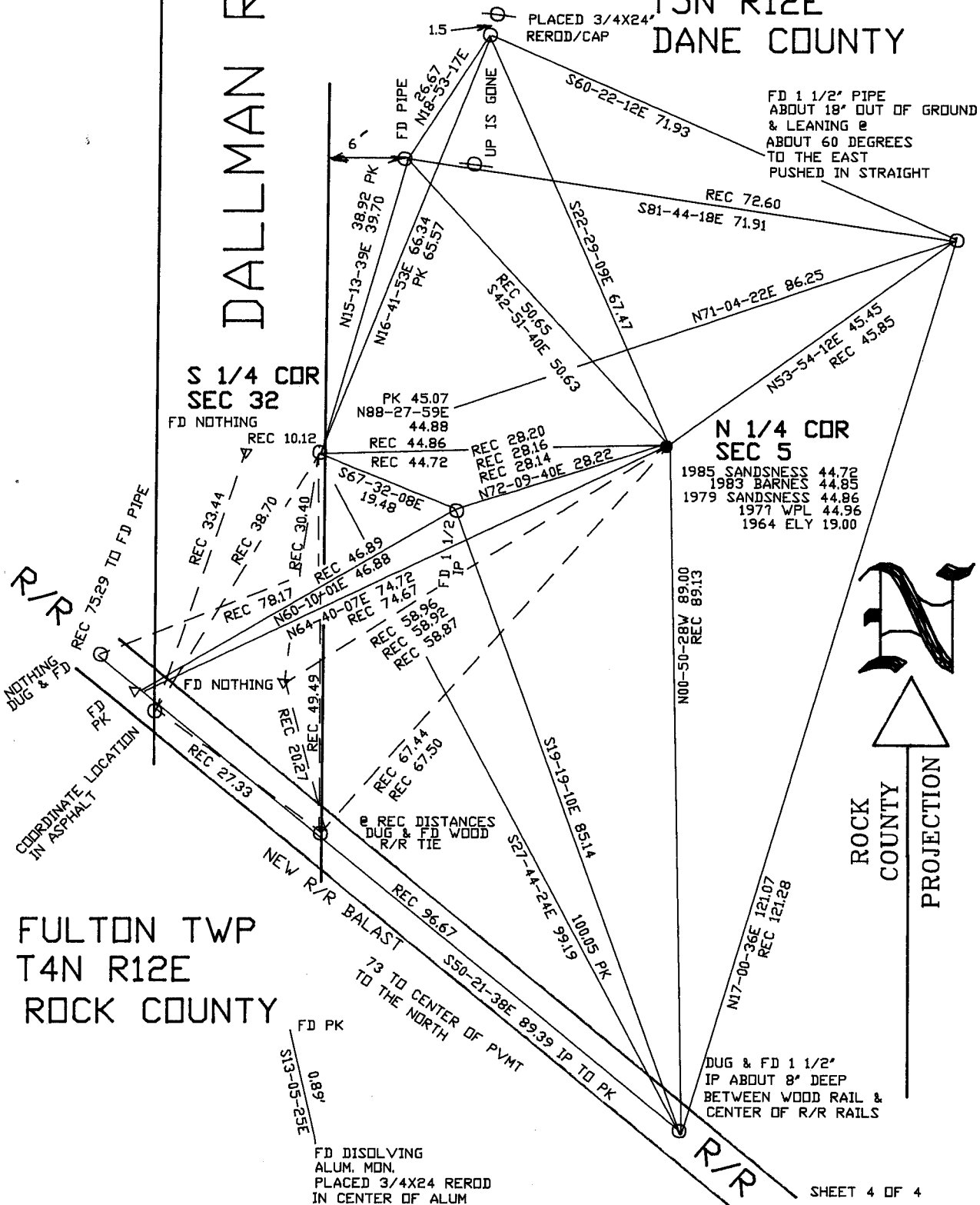
A.E. 7.08 REQUIREMENT

ALBION TWP  
T5N R12E  
DANE COUNTY

DALLMAN RD

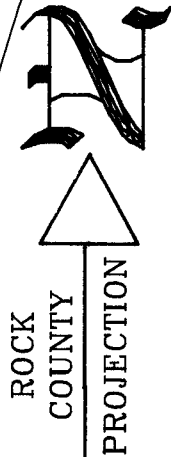
S 1/4 COR  
SEC 32

N 1/4 COR  
SEC 5



FD 1 1/2' PIPE  
ABOUT 18' OUT OF GROUND  
& LEANING @  
ABOUT 60 DEGREES  
TO THE EAST  
PUSHED IN STRAIGHT

N00-50-28W 89.00  
REC 89.13



FULTON TWP  
T4N R12E  
ROCK COUNTY

DUG & FD 1 1/2'  
IP ABOUT 8" DEEP  
BETWEEN WOOD RAIL &  
CENTER OF R/R RAILS

SHEET 4 OF 4

EMBOSSED SEAL

*Donald Barnes*  
5/09/2006

OBSERVATION SHEET 375

A-7(3)