

U.S. PUBLIC LAND SURVEY MONUMENT RECORD

For Public Land Survey Corners In:
T. 4 N. R. 12 E. 4th P.M.
CORNER CODE INDEX

WI ADMINISTRATIVE CODE A-E 7.08 REQUIREMENT
REV 10/23/2004 USMONREC.DWG

A	1	2	3	4	5	6	7	8	9	10	11	12	13	14	15	16	17	18	19	20	21	22	23	24	25	A	
B		6					5								3						2					1	B
C																											C
D																											D
E																											E
F																											F
G																											G
H																											H
J																											J
K																											K
L																											L
M																											M
N																											N
O																											O
P																											P
Q																											Q
R																											R
S																											S
T																											T
U																											U
V																											V
W																											W
X																											X
Y																											Y
Z																											Z

FULTON TWP
ROCK COUNTY WI

IF AVAILABLE
ROCK COUNTY COORDINATES PREFERRED

North _____ Elev. _____

East _____

Hor. Datum _____ Vert. Datum _____

LATITUDE _____ ELLIPS. HT. _____

LONGITUDE _____

NAD83(91) _____ NETWORK ADJ. YR _____

GPS (X) _____ TRAVERSE (X) _____

BASED ON THE FOLLOWING CONTROL:

PLACE MONUMENT SYMBOL AT PROPER LOCATION ON ABOVE INDEX

CORNER MONUMENT

WITNESS MONUMENT

BEARINGS ARE BASED ON: _____

FIELD BOOK _____ PAGE # _____

SHEET 1 OF 4

SHOW A PLAN VIEW DRAWING DEPICTING THE CORNER MONUMENT AND SURROUNDING PHYSICAL FEATURES, INCLUDING THE EXCAVATION AREA AND DEPTH.

PLANNING & ZONING COMMITTEE ADOPTED THIS FORM ON 12/2/1982

CORNER CODE A-1(3)

FU501

(B) Describe any record evidence, monument evidence, occupational evidence, testimonial evidence or any other material evidence you considered, and whether the monument was found or placed.

- 1833 (SEP 20) MULLETT & BRINK NORTH ON EAST SIDE SECTION 1
1372.14 BUR OAK 12 IN DIAMETER
2640 SET QUARTER SECTION POST BUR OAK 14 S19W
22.44' BUR OAK 12 N4N 48.18'
5280 SET POST CORNER TO TOWNSHIPS 4 & 5 N RANGES
11 & 12E BEARINGS {BUR OAK 12 N33E 24.42' BUR
OAK 16 N77W 3.3'} MARKED {BUR OAK 18 S26E
BUR OAK 18 S62W LAND LEVEL FIRST RATE WHITE
BLACK & BUR OAK
- 1833 (SEP 20) MULLETT & BRINK VAR 8-40 EAST ON SOUTH SIDE
SECTION 31 T5N R12E
2534.4 SET QUARTER SEC POST WHITE OAK 10 N15W 59.4';
WHITE OAK 12 N79E 140.58'
4488 ENTER WET PRAIRIE
5280 SET POST CORNER SECTIONS 31 & 32 BUR OAK 12
N77 1/2 W 836.22' BUR OAK 2 N59E 802.56'
LAND LEVEL SECOND RATE AND THINLY TIMBERED
WITH WHITE BUR & BLACK OAK
- 1833 (SEP 22) MULLETT & BRINK WEST ON SOUTH SIDE SEC 36 T5N
R11E VAR 9-23
2640 SET QUARTER SECTION POST BUR OAK 10 N67W
11.22' BUR OAK 14 N25E 37.62'
3168 BUR OAK 12 IN DIAMETER
4224 ENTER MARSH
4488 LEAVE MARSH
5280 SET POST CORNER SECTION 35 & 36 WHITE OAK 14
N79W 25.08' BLACK OAK 16 N23E 84.48' LAND
SECOND RATE FIRST 1/2 ROLLING LAST 1/2 LEVEL
TIMBER FER? BLACK WHITE AND BUR OAK
- 1833 (OCT) MULLETT & BRINK EAST BOUNDARY OF 5N 11E V8 - 40'
NORTH ON EAST SIDE SECTION 36
445.5 BUR OAK 12 IN DIAMETER
2640 SET QUARTER SECTION POST WHITE O 36 S43W
75.24' WHITE O 24 N45W 113.52'
5280 SET POST SECTIONS CORNER 25 & 36 WD 16 S9W
108.9' BUR O 12 N5W 122.76' LAND ROLLING
SECOND RATE BUR WHITE AND YELLOW O & RED
ROOT ROSIN ?
- 1874 RUGER VOL 2 PG 128 FD HH STONE BY THE COR. ALSO FD
WHERE STUMPS OF BTS HAD BEEN DUG UP. SET HH STONE
18X13X10 SURROUNDED WITH 4 HH STONES VAR 8-18 2646.6
TO N 1/4 COR SEC 1 PORTER TWP,
- 1874 LOCKE VOL 1 PG 226 FD STONE SET ON CORNER 1327.92
WEST OF N 1/16TH COR OF NW 1/4 SEC 6
- 1874 LOCKE #1065 FD STONE SET ON CORNER, 1303.83 TO N
1/16TH COR OF NW 1/4, 2647.92 TO N 1/4 COR SEC 6, 5315.64
TO SW COR SEC 6,
- 1911 HINTZE ALBION T5N R12E SET SW CORNER OF 31 BY STONE
SET BY GRAVES IN 1872. S 1/4 COR SEC 31 ON LINE WITH SW
& SE CORNERS SEC 31. BUR O. 14" S21-30W 80.3', BL O
12" S89E 70', N89-16E 2510.4' TO S 1/4 COR SEC 31 NO-
36W 2656.6 TO W 1/4 COR SEC 31. 24.3' WEST & 0.4' NORTH
OF FENCE TO EAST.
- AT DANE COUNTY CORNERS, HINTZE INSTALLED CONCRETE
MONUMENTS. THE DIFFERENCE IN BEARING OF LINES
BETWEEN SECTION CORNERS GIVES THE TRUE DEVIATION
FROM THE STRAIGHT LINE. SOME OF THE BEARINGS ARE
MAGNETIC, CHECKED BY MEASUREMENTS, AND THE REST
ARE TRANSIT LINES CHECKED BY OBSERVATIONS ON
POLARIS. I HEREBY CERTIFY THAT THE DISTANCES AND
BEARINGS ARE CORRECT ACCORDING TO SURVEY MADE
UNDER THE PROVISIONS OF CHAPTER, 39 SECTION 825 OF

SHEET 1 OF 4

CORNER CODE A-1(3)

Donald Beasley

7/11/2006

FU501

THE REVISED STATUTES OF WISCONSIN AND IN ACCORDANCE WITH THE RULES ESTABLISHED BY THE UNITED STATES LAND OFFICE.

1965 SURVEYOR UNKNOWN DANE COUNTY TIE SHEET MAP #1066 THE ABOVE CORNER WAS SET BY THE USE OF AERIAL PHOTOGRAPH. TIES. 82.5 TO 26" TREE SW OF CORNER, 18.2 TO RR SPIKE IN POWER POLE NE OF COR, NAIL IN PAVEMENT @ 9' EAST OF WEST PVMT EDGE, & 8' WEST OF EAST PVMT EDGE.

1970 ?? OCT 7 & 8 VOL 1 PG 226 BELOIT SET OF COUNTY SURVEYORS' RECORDS. DUG & FOUND CONC. MON.

1974 WPL #1044 STONE OR CONC. - LEGEND N89-23-46E 2559.47 TO STONE OR CONC. @ S ¼ COR SEC 31. LEGEND CALLS FOR TRUE BEARINGS. WITH @ SW COR SEC 4 TRUE BEARING OF N00-42-16W & NAD27 OF N01-13-34W

1976 NORTHROP A-1(1) DANE COUNTY TIE SHEET. I LOCATED THE ABOVE CORNER FROM A DOSSIER SHEET IN THE DANE COUNTY SURVEYORS OFFICE, AND THAT I SET A RAIROAD SPIKE AND MADE NEW TIES. THE ABOVE SKETCH IS AN ACCURATE REPRESENTATION OF THE MEASUREMENTS MADE. [SKETCH SHOWS COR 9.4' WEST -REC 8 & 11.0' -REC 9 EAST OF PVMT EDGE. FD EXIST RAILROAD SPIKE IN POWER POLE #1031L EAST OF COR 18.18' -REC 18.2. DID NOT FIND NAIL CALLED FOR IN TREE TO THE SW. SET SPIKE IN SE SIDE OF 30" OAK. 80.85 -REC 82.5]

1979 SANDSNES A-1(2) DANE COUNTY TIE SHEET. I HAVE DUG & FOUND A MONUMENT BOX JUST BELOW THE RD SURFACE WITH A 5/8" DIAMETER SOLID STEEL SHAFT INSIDE. CORNER BELIEVED TO HAVE BEEN SET BY ROCK COUNTY. REFERENCED SAME. CALLS FOR 309,914.64; 2,232,828.51. NOTE: "AT POINT USED AS COR FOUND R.R. SPIKE DUG OUT WHEN DIGGING FOR COR. RESET 1" IRON 309,914.01; 2,232,830.96. SHOWS R/R 2.53 EAST OF COR.

1999 NORTHROP CSM 22 PG 453 FD 7/8" ROD IN MON BOX, 2699.26' TO E ¼ COR SEC 1 PORTER TWP

FOUND PIN IN MON. BOX. 3.9' WEST OF CENTER OF PVMT, ON LINE WITH E/W FENCE AND TREE ROW TO THE EAST & ON LINE WITH E/W TREE ROW TO THE WEST.

SHEET 2 OF 4

CORNER CODE A-1(3)

Donald Barnes

7/11/06

FU501

C) Was the corner restored through acceptance of (1) an obliterated evidence location, or, (2) a found perpetuated location?

THE 1970 BELLOIT SET OF RECORDS STATES "DUG & FOUND CONC. MON." THIS PERPETUATES HINZE'S 1911 POSITION, THAT PERPETUATES THE STONE SET BY GRAVES IN 1872.

D) Describe any material discrepancy between the location of the corner as restored or reestablished and the location of that corner as previously restored or reestablished by distance and direction. Show the discrepancy on the plan view drawing under (a), above. Show the distances between the corner as previously restored or reestablished and (1) the corner as restored or reestablished, and (2) to at least 4 of the witness monuments shown on the drawing in (a), above.

THE 1979 SANDSNES DANE COUNTY TIE SHEET INDICATES THERE WHERE TWO DIFFERENT LOCATIONS. ONE WAS SET IN 1965 BY AN NONSURVEYOR BY THE USE OF AERIAL PHOTOGRAPH. THE SECOND POSITION IS THE FOUND CONCRETE MONUMENT.

(E) Was the corner reestablished through lost corner proportionate methods? If so, show the method, including the directions and distances to other public land survey corners used as evidence or used for proportioning the corner location.

I, **Donald Barnes**, hereby certify that the corner location as identified by the corner code index was determined by me under my direction and control and that this U.S. Public Land Survey Monument Record is correct and complete to the best of my knowledge and belief.

Seal

Emboss

SHEET 3 OF 4

7/11/06

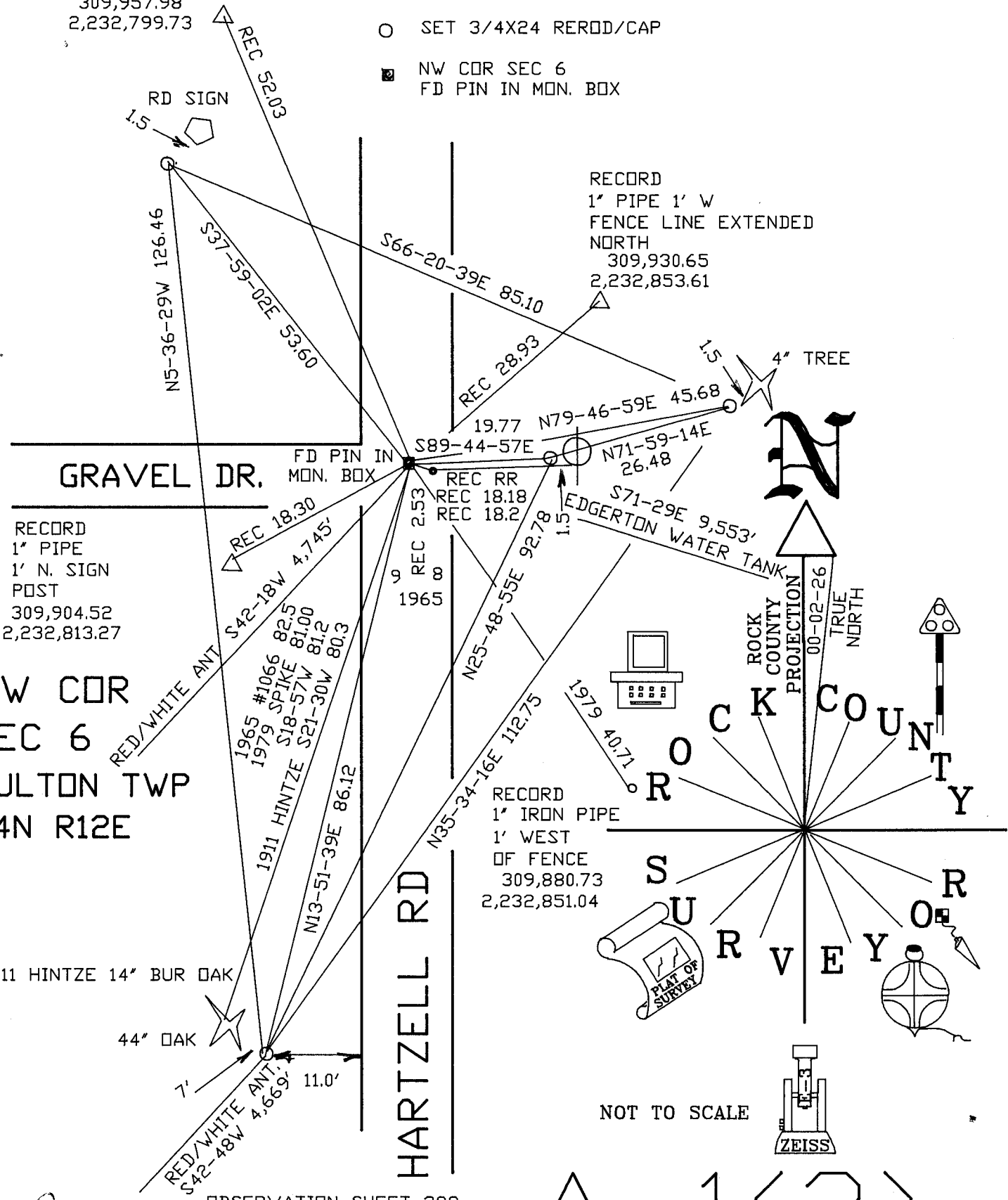
CORNER CODE **A-1(3)**

A.E. 7.08 REQUIREMENT

RECORD
 1' PIPE 2' EAST
 TELE. PEDESTAL
 309,957.98
 2,232,799.73

- △ MON. ON REC TIE SHEET
- RECORD R/R POSITION AS SHOWN ON TIE SHEET
- SET 3/4X24 REROD/CAP
- NW COR SEC 6
 FD PIN IN MON. BOX

RECORD
 1' PIPE 1' W
 FENCE LINE EXTENDED
 NORTH
 309,930.65
 2,232,853.61



RECORD
 1' PIPE
 1' N. SIGN
 POST
 309,904.52
 2,232,813.27

NW COR
 SEC 6
 FULTON TWP
 T4N R12E

RECORD
 1' IRON PIPE
 1' WEST
 OF FENCE
 309,880.73
 2,232,851.04

NOT TO SCALE

OBSERVATION SHEET 399

SHEET 4 OF 4

A-1(3)

EMBOSSSED SEAL
Ronald Barnes
 7-11-06