

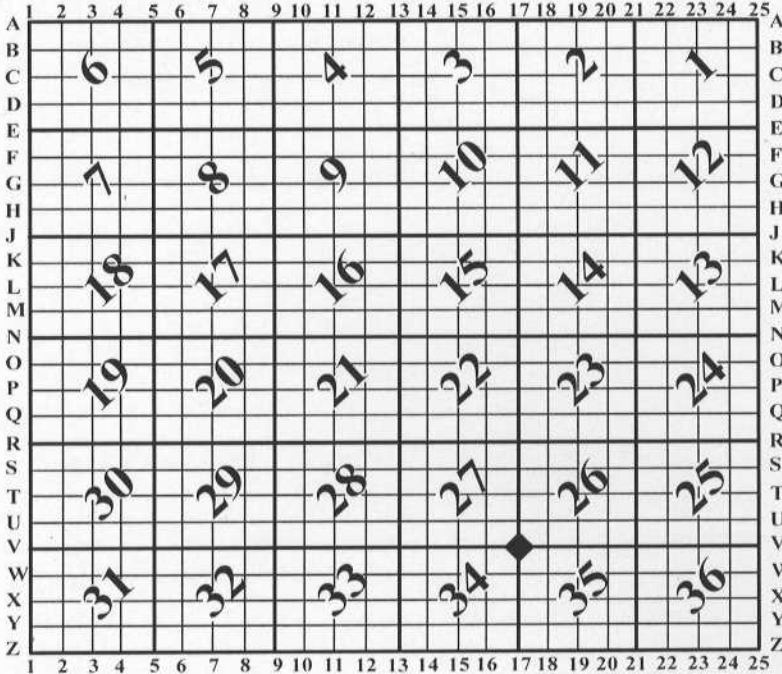
U.S. PUBLIC LAND SURVEY MONUMENT RECORD

For Public Land Survey Corners In: WI ADMINISTRATIVE CODE A-E 7.08 REQUIREMENT

T. 4 N. - R. 13 E. of the 4th P.M.

CORNER CODE INDEX

(PLACE "◆" SYMBOL AT PROPER PLSS CORNER LOCATION)



MILTON TWP
ROCK COUNTY WI

COORDINATES

(GNSS DERIVED VIA WISCORS)

NORTHING: 301897.53 ELEV: N/A
EASTING: 516602.77

Hor. Datum: WISCRS-ROCK, (NA2011)

Vertical Datum: NAVD 88, (If applicable)

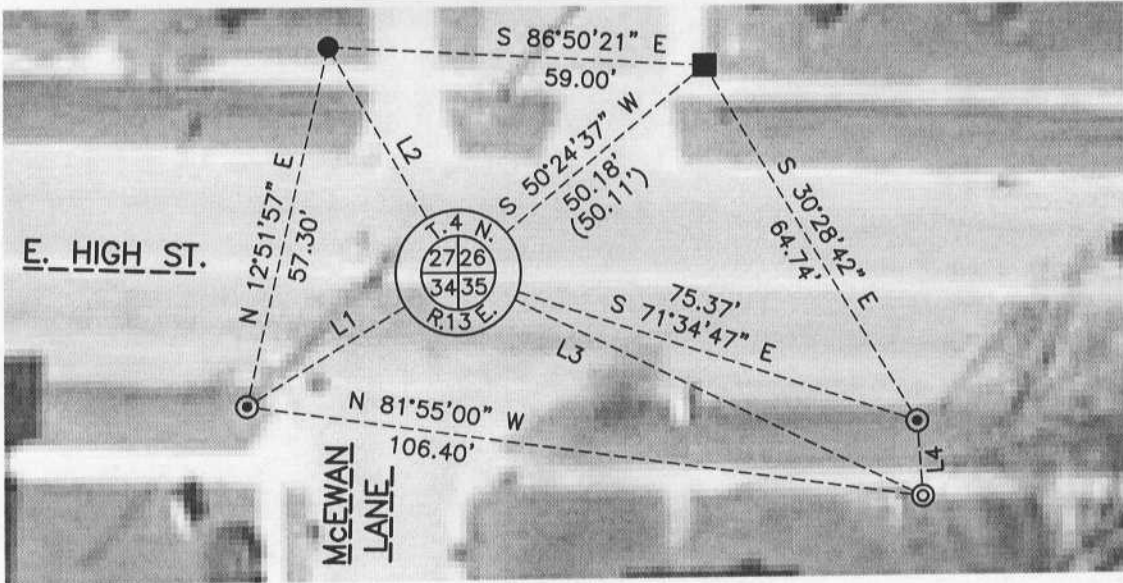
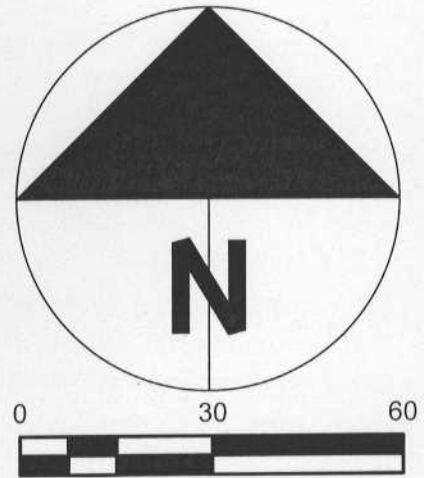
(a) LEGEND

- - 3/4" x 24" REBAR SET, (RED CAP W/"PLSS WITNESS")
- ⊙ - CAPPED WDOT IRON REBAR FOUND
- ⊙ - IRON PIPE FOUND



— TEMPORARY MAG NAIL, WITH FLASHER, SET
(AREA WILL BE DISTURBED BY CONSTRUCTION IN COMING WEEKS)

LINE	BEARING	DISTANCE
L1	N 57°59'24" E	38.91'
L2	N 29°52'16" W	40.63'
L3	S 63°48'32" E	80.63'
L4	S 04°04'57" E	11.79'



B) Describe any record evidence, monument evidence, occupational evidence, testimonial evidence or any other material evidence you considered, and whether the monument was found or placed.

I found a mag nail near the PLSS corner and four witnesses from the V-17(4) tie-sheet, (Barnes-2002). Barnes excavated at this location and found a bolt first referenced by Sunny in 1931. Based on the witnesses surveyed, (robotic total station), I could not get the existing mag nail to match my computations by 0.16', +/- . This area will be milled/paved in coming weeks; in advance of that I set a temporary mag nail with a flasher at my computed point, leaving the existing mag intact and beneath the flasher. My computed position matches 3 dimensions from the Barnes tie-sheet to 0.01 ft. and one to 0.07'. The existing mag nail can be found on surveys filed since 2002 however, given the documented history of this location, my opinion is that this PLSS corner location is best determined from the witnesses found dating back to 2002, which reference the 1931 bolt found by Sunny. This location will need a permanent monument set post-construction. I set one additional witness per the map.

C) Was the corner restored through acceptance of (1) an obliterated evidence location, or, (2) a found perpetuated location?

Found perpetuated location.

This location will be milled/paved in coming weeks.

D) Describe any material discrepancy between the location of the corner as restored or reestablished and the location of that corner as previously restored or reestablished by distance and direction. Show the discrepancy on the plan view drawing under (a), above. Show the distances between the corner as previously restored or reestablished and (1) the corner as restored or reestablished, and (2) to at least 4 of the witness monuments shown on the drawing in (a), above.

Question B details my findings; I do not agree with the mag nail that exists, for which no tie-sheet is filed.

FOR REFERENCE ONLY, the coordinates for the existing mag nail are: N-301897.42, E-516602.65

(E) Was the corner reestablished through lost corner proportionate methods? If so, show the method, including the directions and distances to other public land survey corners used as evidence or used for proportioning the corner location.

N/A

I, Jason R. Houle, hereby certify that the corner location as identified by the corner code index was determined by me under my direction and control and that this U.S. Public Land Survey Monument Record is correct and complete to the best of my knowledge and belief.

CORNER CODE: V-17
(A.E. 7.08 REQUIREMENT)

