

U.S. PUBLIC LAND SURVEY MONUMENT RECORD

For Public Land Survey Corners In: WI ADMINISTRATIVE CODE A-E 7.08 REQUIREMENT

T. 4 N. – R. 13 E. of the 4th P.M.

CORNER CODE INDEX

(PLACE **◆** SYMBOL AT PROPER PLSS CORNER LOCATION)

A	1	2	3	4	5	6	7	8	9	10	11	12	13	14	15	16	17	18	19	20	21	22	23	24	25	A
B			6			5				4				3				2				1				B
C																										C
D																										D
E																										E
F																										F
G																										G
H																										H
J																										J
K																										K
L																										L
M																										M
N																										N
O																										O
P																										P
Q																										Q
R																										R
S																										S
T																										T
U																										U
V																										V
W																										W
X																										X
Y																										Y
Z																										Z
	1	2	3	4	5	6	7	8	9	10	11	12	13	14	15	16	17	18	19	20	21	22	23	24	25	

MILTON TWP

ROCK COUNTY WI

COORDINATES

(GNSS DERIVED VIA WISCORS)

NORTHING: 301897.56 ELEV: 873.4

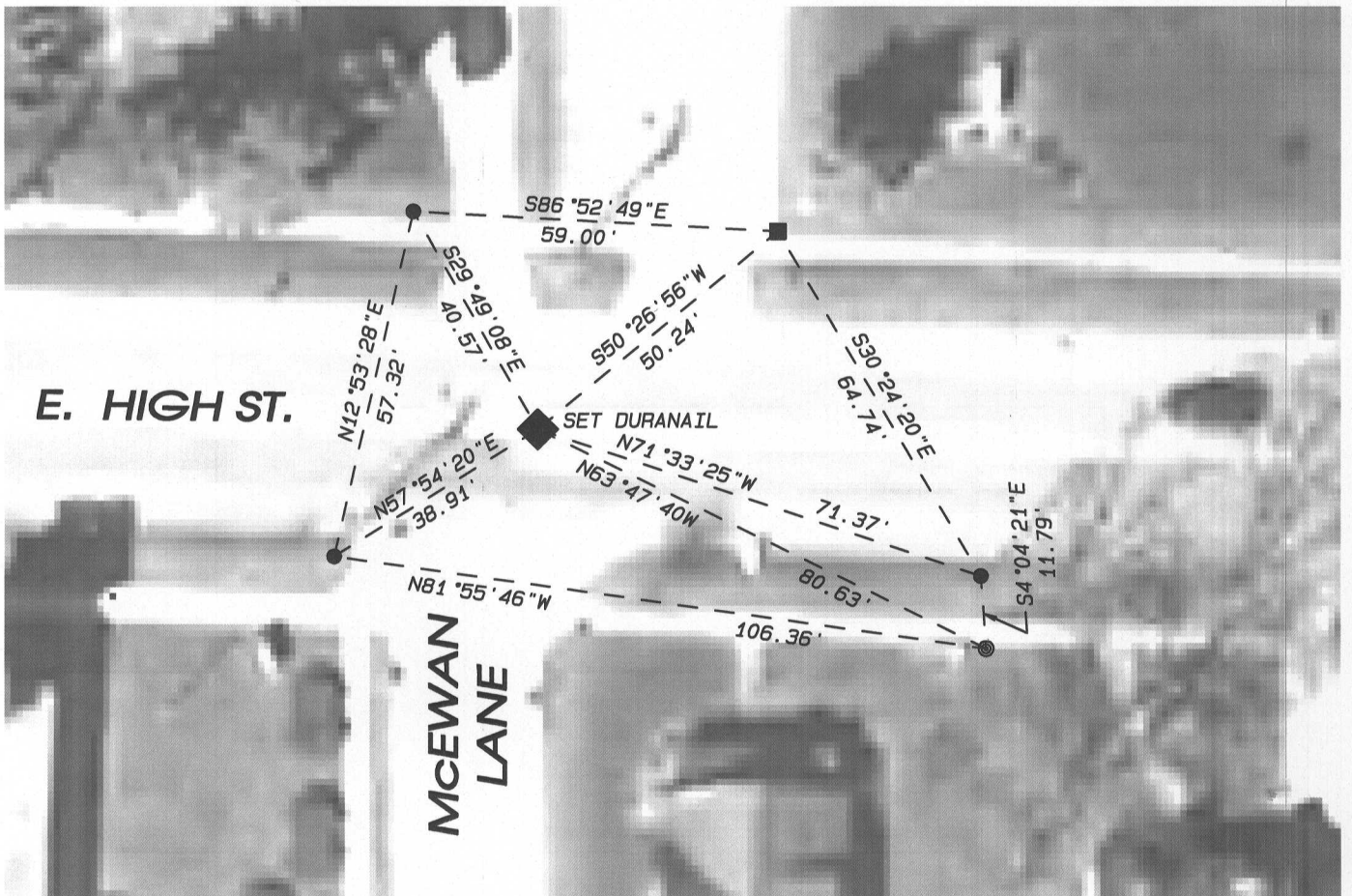
EASTING: 516602.78

Hor. Datum: WCCS-ROCK, (NA2011)

Vertical Datum: NAVD 88, (If applicable)

(a) LEGEND

- FOUND IRON PIN
- ⊙ FOUND IRON PIPE
- FOUND IRON BOLT



Field book: _____

Page: _____

Corner code: V-17

B) Describe any record evidence, monument evidence, occupational evidence, testimonial evidence or any other material evidence you considered, and whether the monument was found or placed.

I FOUND THE MAG NAIL AND FLASHER SET AT THE PLSS CORNER BY JASON HOULE ON 9/5/14 AND RECORDED THE LOCATION AND TIES AS THE LOCATION IS GOING TO BE DISTUBED BY ROAD CONSTRUCTION. I SET A DURANAIL AT THE PLSS CORNER AFTER CONSTRUCTION WAS FINISHED.

C) Was the corner restored through acceptance of (1) an obliterated evidence location, or, (2) a found perpetuated location?

FOUND PERPETUATED LOCATION

D) Describe any material discrepancy between the location of the corner as restored or reestablished and the location of that corner as previously restored or reestablished by distance and direction. Show the discrepancy on the plan view drawing under (a), above. Show the distances between the corner as previously restored or reestablished and (1) the corner as restored or reestablished, and (2) to at least 4 of the witness monuments shown on the drawing in (a), above.

N/A

(E) Was the corner reestablished through lost corner proportionate methods? If so, show the method, including the directions and distances to other public land survey corners used as evidence or used for proportioning the corner location.

I, Ronald Combs, hereby certify that the corner location as identified by the corner code index was determined by me under my direction and control and that this U.S. Public Land Survey Monument Record is correct and complete to the best of my knowledge and belief.



CORNER CODE: XX
(A.E. 7.08 REQUIREMENT)