

U.S. PUBLIC LAND SURVEY MONUMENT RECORD

For Public Land Survey Corners in:

WI ADMINISTRATIVE CODE A-E 7.08 REQUIREMENT

T. 1N., R. 12E

CORNER CODE INDEX

A	1	2	3	4	5	6	7	8	9	10	11	12	13	14	15	16	17	18	19	20	21	22	23	24	25
B	6																								
C		5																							
D			A																						
E				3																					
F					2																				
G						1																			
H	7																								
I		8																							
J			9																						
K				10																					
L					11																				
M	18																								
N		17																							
O			16																						
P				15																					
Q					14																				
R						13																			
S	19																								
T		20																							
U			21																						
V				22																					
W					23																				
X						24																			
Y							25																		
Z								26																	
									27																
										28															
											29														
												30													
													31												
														32											
															33										
																34									
																	35								
																		36							

PLACE MONUMENT SYMBOL  AT PROPER LOCATION ON ABOVE INDEX

BELoit TWP
ROCK COUNTY WI

IF AVAILABLE
ROCK COUNTY COORDINATES PREFERRED

North 206,170.09 Elev. _____

East 480,313.09

Hor. Datum County Vert. Datum _____

LATITUDE _____ ELLIPS. HT. _____

LONGITUDE _____

GPS (X) _____ TRAVERSE (X) _____

BASED ON THE FOLLOWING CONTROL:

CORNER MONUMENT

WITNESS MONUMENT

(a)

BEARINGS ARE BASED ON: _____

FIELD BOOK _____ PAGE # _____

SHEET 1 OF 3

SHOW A PLAN VIEW DRAWING DEPICTING THE CORNER MONUMENT AND SURROUNDING PHYSICAL FEATURES, INCLUDING THE EXCAVATION AREA AND DEPTH.

PLANNING & ZONING COMMITTEE ADOPTED THE ABOVE FORM ON 12/2/1982

CORNER CODE 2-13 (3)

BE627

(B) Describe any record evidence, monument evidence, occupational evidence, testimonial evidence or any other material evidence you considered, and whether the monument was found or placed.

- 1833 LYON BASE LINE (N.W. TERR) EAST ALONG THE SOUTH SIDE OF SEC 33.
VAR 6-00E
2640 SET POST AND RAISED A CIRCULAR MOUND OF EARTH FOR 1/4 SEC.
CORNER.
5280 SET POST AND RAISED A MOUND OF EARTH 3' SQUARE AT BASE AND 2
1/2 FEET HIGH FOR CORNER TO SECTIONS 33 & 34
LAND ROLLING, SANDY, 3RD RATE PRAIRIE
- 1834 HARRISON (LYON'S BROTHER-IN-LAW) MAP SHOWS THE RANDOM STATE LINE
WHICH IS PROBABLY LYON'S LINE. IT IS BETWEEN THE W 1/4 & NW
CORNERS OF SECTION 34.
NORTH BETWEEN SECTIONS 33 & 34. VAR 7-00E
660' TO THE SUMMIT OF HIGH GROUND
2640 SET QUARTER SEC. CORNER. POST & RAISED MOUND
5243.7' TO THE RANDOM STATE LINE
5280 SET COR TO SECTIONS 28,29,33,34 ON GROUND SLOPING NE.
SET A POST & RAISED MOUND.
LAND GREATLY RATED 1ST RATE PRAIRIE
- 1940 SHIMEALL MAP #7218 ANGLE OF 89-12 AT SE CO SEC 33 FROM NW COR SEC
1 T46N R1E TO E 1/4 COR SEC 33 & 2324.4 TO E 1/16TH COR OF THE SE
1/4 OF SEC 33.
- 1940 SHIMEALL MAP #11937 1324.4 FROM THE SW COR TO THE W 1/16TH COR OF
THE SW 1/4 OF SEC 34 & 1332.10 FROM THE W 1/16TH COR TO THE W 1/4
COR OF SEC 34.
- 1954 SHIMEALL MAP #12748 1321.30 FROM THE SW COR TO THE W 1/16TH COR OF
THE SW 1/4 OF SEC 34.
- 1971 SHIMEALL CSM VOL 2 PG 48 ANGLE OF 90-24-30 AT SW COR SEC 34 FROM E
1/6TH COR OF THE SE 1/4 OF SEC 33 TO S 1/4 COR SEC 34.
- 1983 BARNES VOL 6 PG 306 2644.88 TO S 1/4 COR SEC 33 & 2655.55 TO E 1/4
COR SEC 33.
- 1983 BARNES Z-13 FOUND GAS PIPE SET BY SHIMEALL IN FEB 1940. SET POLY
MON ON TOP OF GAS PIPE & REFERENCED. ALSO FD ANOTHER GAS PIPE AND
2 R/R SPIKES. ANGLE OF 90-25-07 AT SW COR SEC 34 FROM E 1/6TH COR
OF THE SE 1/4 OF SEC 33 TO S 1/4 COR SEC 34 & ANGLE OF 89-13-34 AT
SE COR SEC 33 FROM NW COR SEC 1 T46N R1E TO E 1/4 COR SEC 33.
- 1996 KREBS CSM VOL 19 PG 422 2658.27 FROM THE SW TO W 1/4 CORNERS OF
SEC 34.

FOUND POLY MONUMENT WITH TOP BROKE OFF. PLACED 2 MAGNETS ON SOUTH SIDE
ABOUT 0.2 DEEP. 1323.76 FROM SW COR TO W 1/16TH COR OF SW 1/4 OF SEC
34, 1331.85 FROM W 1/16TH COR OF SW 1/4 TO W 1/4 COR OF SEC 34, & ANGLE
OF 179-59-40 AT W 1/16TH COR OF SW 1/4 FROM SW COR TO W 1/4 COR SEC 34.
GAS PIPE THAT IS 2.62 TO THE SOUTH EAST WAS PROBABLY ALSO SET BY
SHIMEALL WHICH HE USED FOR CSM VOL 2 PG 48.

C) Was the corner restored through acceptance of (1) an obliterated
evidence location, or, (2) a found perpetuated location?
ACCEPTED FOUND POLY. MONUMENT.

D) Describe any material discrepancy between the location of the
corner as restored or reestablished and the location of that corner as
previously restored or reestablished by distance and direction. Show
the discrepancy on the plan view drawing under (a), above. Show the
distances between the corner as previously restored or reestablished
and (1) the corner as restored or reestablished, and (2) to at least 4
of the witness monuments shown on the drawing in (a), above.
IT APPEARS FROM THE RECORDS AND FIELD EVIDENCE THAT THE POLY. MON.
PERPETUATES THE CORNER THAT SHIMEALL PLACED IN 1940. THE MONUMENT IS
IN HARMONY WITH SHIMEALL'S 1940 DISTANCE OF 7.77 SOUTH OF A LINE
BETWEEN THE NW & NE CORNERS OF SEC 1 T46N R1E.

Z-13(3)

Donald Barnes
Dec 8, 1997

(E) Was the corner reestablished through lost corner proportionate methods? If so, show the method, including the directions and distances to other public land survey corners used as evidence or used for proportioning the corner location.

NO

I, Donald Barnes, hereby certify that the corner points as identified by the corner code index were, in a field survey on, DEC 3, 1997, established, re-established, monumented, re-monumented, recovered or restored as expressed below and in conformance with the regulations and rules as required in the current manual of survey instructions of the United States Department of Interior, Bureau of Land Management.

Donald Barnes
seal
Dec 8, 1997

COUNTY SURVEYOR FILING DATA

Date of computer entry _____

Date microfilmed _____

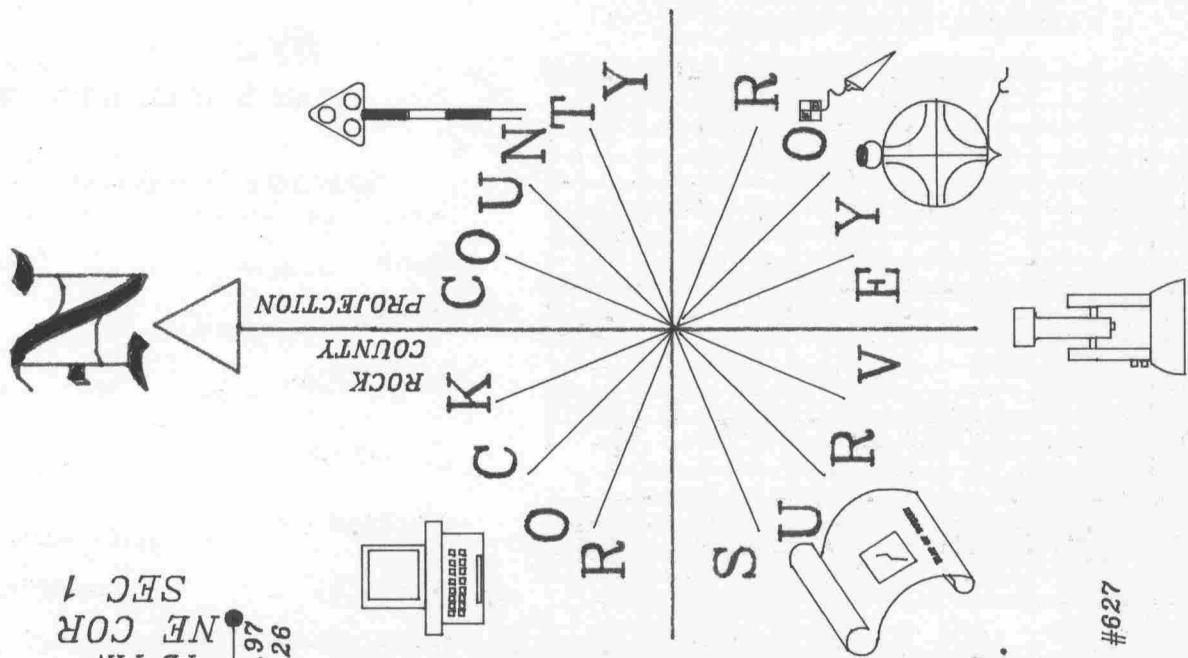
Number of included sheets 2

CORNER CODE

EMBOSS LAND SURVEYOR SEAL

A-E 7.08 REQUIREMENT

Z-13(3)



- △ FD PIN
- ◇ FD PIPE
- PLACED 3/4X24 REBROD
- FD GAS PIPE
- FD R/R
- FD POLY MON WITH TOP BROKE OFF. PLACED MAGNETS ON SOUTH SIDE, 0.2 DEEP

OBSERVATION SHEET #627

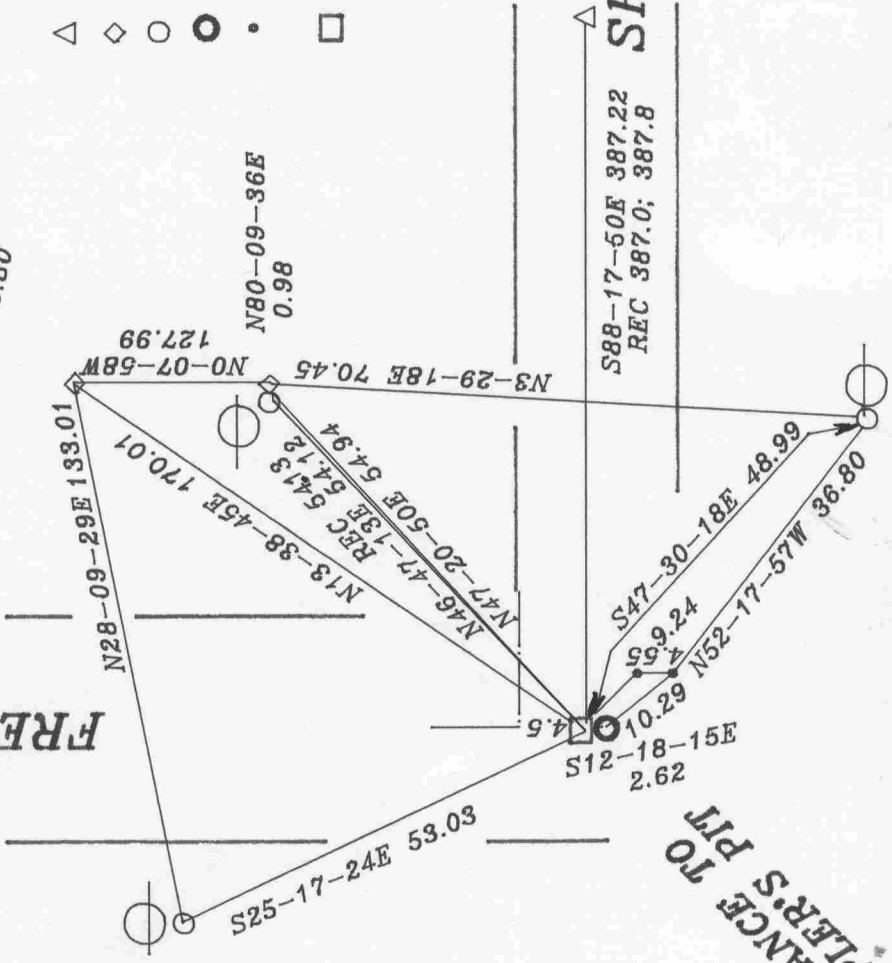
W 1/4 COR

179-59-40 1/16TH FD PIPE 1940 2656.50
 1940 2658.27
 1940 1324.4
 1954 1321.30
 1323.76
 1331.85

FD CONCRET MON. SEC 1 NW COR

N89-20-25W 2258.78
 REC 2259.80

FREDRICK RD



Donald Barnes
 Dec 8, 1997

EMBOSSSED SEAL

Z-13(3)