

Paper weight-110# (minimum)

Black nonfading ink required

# U.S. PUBLIC LAND SURVEY MONUMENT RECORD

For Public Land Survey Corners In:

WI ADMINISTRATIVE CODE A-E 7.08 REQUIREMENT

T. 2 N. R. 14 E. 4th P.M.

REV 10/23/2004

USMONREC.DWG

### CORNER CODE INDEX

PRAPTOR TWP  
ROCK COUNTY WI

IF AVAILABLE  
ROCK COUNTY COORDINATES PREFERRED

A	1	2	3	4	5	6	7	8	9	10	11	12	13	14	15	16	17	18	19	20	21	22	23	24	25	A
B																										B
C																										C
D																										D
E																										E
F																										F
G																										G
H																										H
J																										J
K																										K
L																										L
M																										M
N																										N
O																										O
P																										P
Q																										Q
R																										R
S																										S
T																										T
U																										U
V																										V
W																										W
X																										X
Y																										Y
Z																										Z

North \_\_\_\_\_ Elev. \_\_\_\_\_

East \_\_\_\_\_

Hor. Datum \_\_\_\_\_ Vert. Datum \_\_\_\_\_

LATITUDE \_\_\_\_\_ ELLIPS. HT. \_\_\_\_\_

LONGITUDE \_\_\_\_\_

NAD83(91) \_\_\_\_\_ NETWORK ADJ. YR \_\_\_\_\_

GPS (X) \_\_\_\_\_ TRAVERSE (X) \_\_\_\_\_

BASED ON THE FOLLOWING CONTROL:

PLACE MONUMENT SYMBOL  AT PROPER LOCATION ON ABOVE INDEX

CORNER MONUMENT

WITNESS MONUMENT

(a)

BEARINGS ARE BASED ON: -----

FIELD BOOK \_\_\_\_\_ PAGE # \_\_\_\_\_

SHEET 1 OF 2

SHOW A PLAN VIEW DRAWING DEPICTING THE CORNER MONUMENT AND SURROUNDING PHYSICAL FEATURES, INCLUDING THE EXCAVATION AREA AND DEPTH.

PLANNING & ZONING COMMITTEE ADOPTED THIS FORM ON 12/2/1982

CORNER CODE E-15(3)

BR528 S1/4CORSEC3

(B) Describe any record evidence, monument evidence, occupational evidence, testimonial evidence or any other material evidence you considered, and whether the monument was found or placed.

- 1871 RUGER VOL 2 PG 64 DROVE STAKE DEEP & PUT ON TOP OF IT. FD OLD STAKE DRVOE CEDAR STAKE DEEP & PUT ON TOP OF IT HH STONE 20X20X12 SURROUNDED IT WITH 4 HH STONES. VAR 4-57 2649.24 TO SW COR SEC 3, VAR 5-17 2642.64 TO SE COR SEC 3, VAR 6-05 2644.62 TO CEN OF SEC 3, & VAR 6-05 5272.74 TO N 1/4 COR SEC 3.
- 1874 RUGER VOL 2 PG 141 FD COR EST BY SELF IN SURVEY OF SEC 3. VAR 7-40 TO S 1/4 COR SEC 10. USED TO SUBDIVIDE SEC 10
- 1971 LEE VOL 4 PG 513 DUG & FD 17X17X12 HH FLUSH WITH UNDERSIDE OF PVMT. REFERNCED SAME.
- 1980 WIDOT E-15 CALLS FOR PK. SET TIES.
- 1981 COMBS MAP #511 FD PK @ S 1/4 COR SEC 3 & SE COR SEC 3. POB OF SURVEY IS WESTERLY 985.66 FROM SE COR SEC 3.
- 1982 BARNES TWP PROJ. NOTHING
- 1982 BARNES E-15(1) SET POLY FROM TIES.
- 1994 WIDOT E-15(2) CAST IRON NAD83(91) 240,569.47; 2,284,377.68. CONVERT 258,669.17; 546,295.40
- 2000 COMBS CSM VOL 24 PG 237 FD ALUM @ S 1/4 & SE CORNERS OF SEC 3. 2644.83 TO SE COR SEC 3.
- 2001 LATHROP CSM VOL 25 PG 34 FD ALUM @ S 1/4 COR, SE COR, & E 1/4 COR OF SEC 3. 2644.83 TO SE COR SEC 3. ANGLE 88-17-45 @ SE COR SEC 3 FROM S 1/4 COR SEC 3 TO E 1/4 COR SEC 3.

CONTACTED AFTER PVMT WAS MILLED. FD POLY WITH TOP MILLED OFF. PLACED 2 MAGNETS ON TOP OF POLY, WHICH WAS PAVED OVER. INSTALLED STEEL SURVEY MONUMENT SPIKE AFTER FINAL MATT WAS INSTALLED. STEEL SURVEY SPIKE IS 3" LONG, 3/8" DIAMETER, & TOP IS 1" IN DIAMETER AND STAMPED "SURVEY MARKER". SUB-BASE MONUMENT IS STILL IN.

C) Was the corner restored through acceptance of (1) an obliterated evidence location, or, (2) a found perpetuated location?

SET SURVEY SPIKE AT INTERSECTION OF LEE'S RECORD DISTANCES WHICH FIT. CONSTRUCTION PROBABLY DISTURBED POLY.

D) Describe any material discrepancy between the location of the corner as restored or reestablished and the location of that corner as previously restored or reestablished by distance and direction. Show the discrepancy on the plan view drawing under (a), above. Show the distances between the corner as previously restored or reestablished and (1) the corner as restored or reestablished, and (2) to at least 4 of the witness monuments shown on the drawing in (a), above.

NO

(E) Was the corner reestablished through lost corner proportionate methods? If so, show the method, including the directions and distances to other public land survey corners used as evidence or used for proportioning the corner location.

NO

I, Donald Barnes, hereby certify that the corner location as identified by the corner code index was determined by me under my direction and control and that this U.S. Public Land Survey Monument Record is correct and complete to the best of my knowledge and belief.

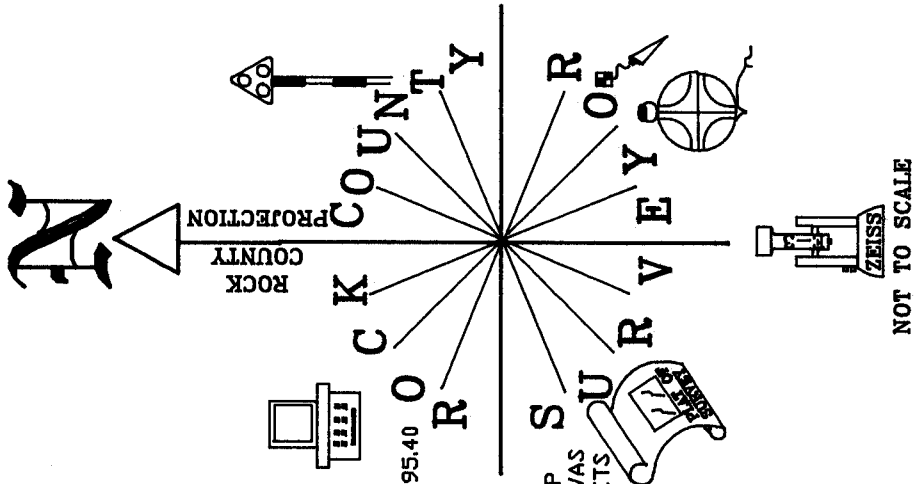
Seal

Donald Barnes

9/22/08

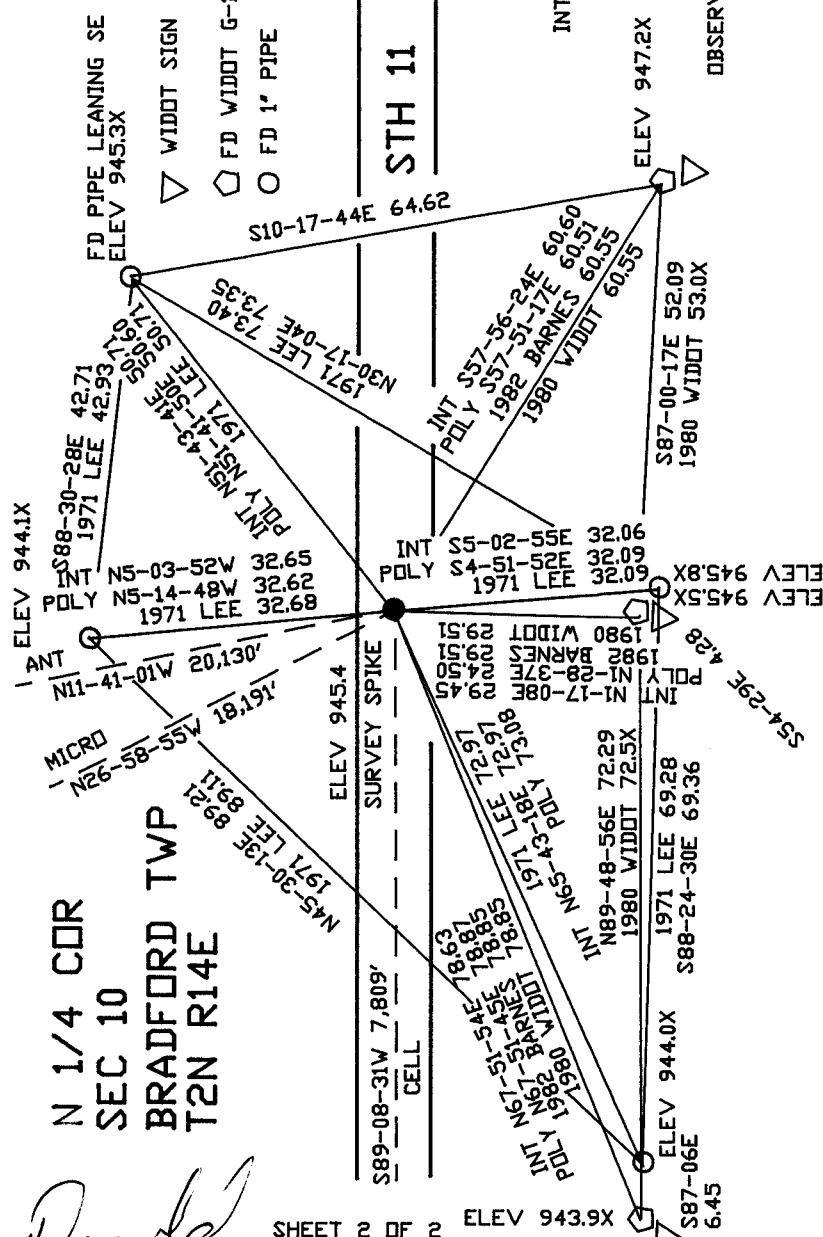
SHEET 1 OF 2

CORNER CODE **E-15(3)**  
A.E. 7.08 REQUIREMENT



CALLS FOR CI  
 WIDDOT NAD83(91)  
 240,569.471 2,284,377.68  
 CONVERT - 258,669.171 546,295.40

SURVEY SPIKE IS 0.3'  
 SOUTH CENTER OF PVMT  
 0.2' BELOW MATT & PVMT  
 CENTER FD POLY WITH TOP  
 MILLED OFF; STUD BASE WAS  
 VISABLE. PLACED 2 MAGNETS  
 ON MON.



OBSERVATION SHEET #528 & 1528  
 FB #2 PG 21

*Donald Lawes*  
 EMBOSSED SEAL  
 9/22/08

SHEET 2 OF 2

E-15(3)