

U.S. PUBLIC LAND SURVEY MONUMENT RECORD

For Public Land Survey Corners in:

WI ADMINISTRATIVE CODE A-E 7.08 REQUIREMENT

T. 1N., R. 14E

CORNER CODE INDEX

A	1	2	3	4	5	6	7	8	9	10	11	12	13	14	15	16	17	18	19	20	21	22	23	24	25
B																									
C	6						5				A			3				2						1	
D								4																	
E																									
F																									
G	1						8				9			10				11						12	
H																									
I																									
J																									
K																									
L	13						11				16			15				14						13	
M																									
N																									
O																									
P	19						20				21			22				23						24	
Q																									
R																									
S																									
T	30						29				28			27				26						25	
U																									
V																									
W																									
X	31						32				33			34				35						36	
Y																									
Z																									

CLINTON TWP

ROCK COUNTY WI

IF AVAILABLE
ROCK COUNTY COORDINATES PREFERRED

North _____ Elev. _____

East _____

Hor. Datum _____ Vert. Datum _____

LATITUDE _____ ELLIPS. HT. _____

LONGITUDE _____

GPS (X) _____ TRAVERSE (X) _____

BASED ON THE FOLLOWING CONTROL:

PLACE MONUMENT SYMBOL AT PROPER LOCATION ON ABOVE INDEX

CORNER MONUMENT

WITNESS MONUMENT

BEARINGS ARE BASED ON: _____

OBSERVATION SHEETS

FIELD BOOK _____ PAGE # _____

SHEET 1 OF 2

SHOW A PLAN VIEW DRAWING DEPICTING THE CORNER MONUMENT AND SURROUNDING PHYSICAL FEATURES, INCLUDING THE EXCAVATION AREA AND DEPTH.

PLANNING & ZONING COMMITTEE ADOPTED THE ABOVE FORM ON 12/2/1982

CORNER CODE E-7(2)

CL524

(B) Describe any record evidence, monument evidence, occupational evidence, testimonial evidence or any other material evidence you considered, and whether the monument was found or placed.

- 1877 RUGER VOL 2 PG 224 FD REMAINS OF OLD STAKE IN THE CENTER OF THE HIGHWAY & ON THE EAST EDGE OF TRAVELED TRACKS AS ?? PUT IN THE PLACE OF OLD STAKE LIMESTONE 22X12X7 SURROUNDED BY 5 HH STONES. HOLMES HAMMOND WAS PRESENT & WHEN I FOUND THE OLD STAKE & RENEWED THE CORNER. 2647.92 VAR 3-35 TO NW COR SEC 8 & 2653.2 TO CENTER OF SEC 8.
- 1878 RUGER VOL 2 PG 258 FD COR ESTABLISHED BY SELF IN THE SURVEY OF SEC 8 (USED TO SUBDIVIDE SEC 5)
- 1881 LEE VOL 6 PG 72 2641.32 TO SE COR SEC 5 & S5-05E 2655.84 TO CENTER OF SEC 8. STATES NOTHING ABOUT MON.
- 1881 LEE VOL 2 PG 320 FD STAKE STONES SET BT RUGER, 2641.32 TO NE COR SEC 8.
- 1905 KERCH VOL 3 PG 29 FD 1/4 SEC COR AS DESCRIBED BY RUGER. 2645.0' TO SE COR SEC 5.
- 1930 BATTERMAN VOL 3 PG 182 FD GAS PIPE & REFERENCED. CUT HOLE IN CONCRETE 7-5-32 RESET MON WITH 1" PIPE 2' LONG & FLUSH WITH CONCRETE 4.6 EAST OF CENTER OF SAME.
- 1939 SUNNY VOL 3 PG 422 FD PIPE MON. IN CONC. PVMT. S2-30E 2661.0 TO CENTER OF SEC 8.
- 1966 BATTERMAN JR. VOL 4 PG 252 REFERENCED CORNER BUT STATES NOTHING ABOUT MON.
- 19?? WIS DOT E-7 REFERENCED MON. STATED NOTHING ABOUT MON.
- 1981 BARNES REMON. MAP :
N88-58-03W 2653.97 (2647.92 RUGER) TO SW COR SEC 5
S88-53-21E 2645.41 (2641.32 LEE, 2645.0 KERCH) TO SE COR SEC 5
S0-33-31E 2660.41 (2661.0 SUNNY, 2653.2 RUGER) TO CENTER OF SEC 8.
- 1981 BARNES VOL 6 PG 141 FD PK AS PREVIOUSLY SET. FD 1X24 IRON PIPE 0.8' DEEP. REPLACED WITH ALUM. MON. 4.0 EAST OF CENTER PVMT.
- 1982 BARNES E-7(1) FD BROKEN ALUM. MON. SET SPIKE ALUM MON. ON TOP OF BROKEN ONE. FD RECORD REFERENCE PIPES. 4.2 EAST OF CENTER OF PVMT. ROAD RESURFACED IN SUMMER OF 1982.

FD ALUM MON WITH TOP OFF. FD REFERENCE MON TO THE WEST.

C) Was the corner restored through acceptance of (1) an obliterated evidence location, or, (2) a found perpetuated location?

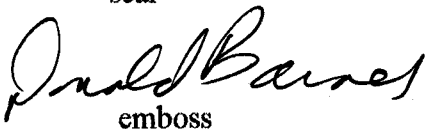
ACCEPTED FOUND PERPETUATED LOCATION.

D) Describe any material discrepancy between the location of the corner as restored or reestablished and the location of that corner as previously restored or reestablished by distance and direction. Show the discrepancy on the plan view drawing under (a), above. Show the distances between the corner as previously restored or reestablished and (1) the corner as restored or reestablished, and (2) to at least 4 of the witness monuments shown on the drawing in (a), above.

(E) Was the corner reestablished through lost corner proportionate methods? If so, show the method, including the directions and distances to other public land survey corners used as evidence or used for proportioning the corner location.

I, Donald Barnes, hereby certify that the corner location as identified by the corner code index was determined by me under my direction and control and that this U.S. Public Land Survey Monument Record is correct and complete to the best of my knowledge and belief.

seal


emboss

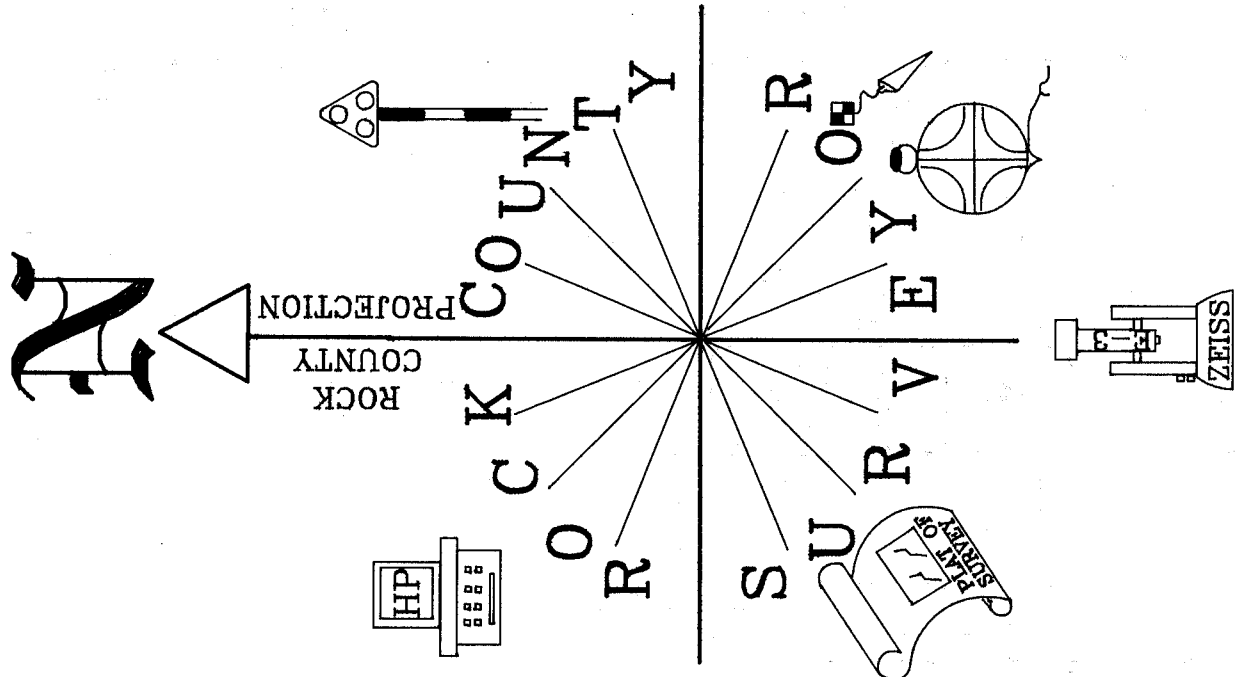
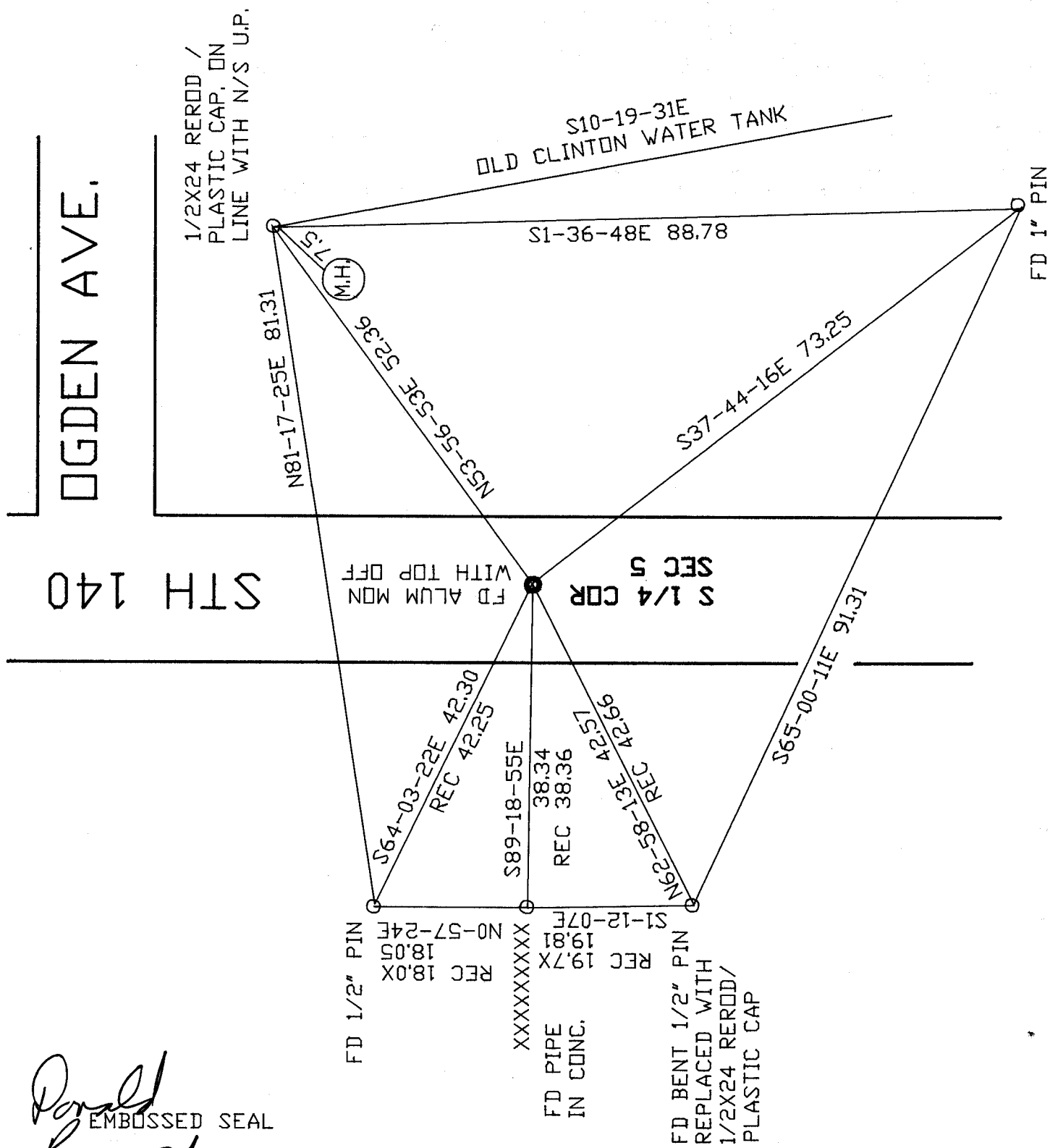
Number of included sheets 1

May 7 1999

CORNER CODE E-7(2)

Donald
 EMBOSSED SEAL
Baines
 May 6, 1999

E-7(2)



OGDEN AVE.

STH 140