

# U.S. PUBLIC LAND SURVEY MONUMENT RECORD

For Public Land Survey Corners in:

WI ADMINISTRATIVE CODE A-E 7.08 REQUIREMENT

T. 2 N., R. 14 E

### CORNER CODE INDEX

A	1	2	3	4	5	6	7	8	9	10	11	12	13	14	15	16	17	18	19	20	21	22	23	24	25
B																									
C	6																								
D																									
E																									
F																									
G	1																								
H																									
J																									
K																									
L	18																								
M																									
N																									
O																									
P	19																								
Q																									
R																									
S																									
T	30																								
U																									
V																									
W																									
X	31																								
Y																									
Z																									

BRADFORD TWP

ROCK COUNTY WI

IF AVAILABLE  
ROCK COUNTY COORDINATES PREFERRED

North \_\_\_\_\_ Elev. \_\_\_\_\_

East \_\_\_\_\_

Hor. Datum \_\_\_\_\_ Vert. Datum \_\_\_\_\_

LATITUDE \_\_\_\_\_ ELLIPS. HT. \_\_\_\_\_

LONGITUDE \_\_\_\_\_

GPS (X) \_\_\_\_\_ TRAVERSE (X) \_\_\_\_\_

BASED ON THE FOLLOWING CONTROL:

PLACE MONUMENT SYMBOL  AT PROPER LOCATION ON ABOVE INDEX

CORNER MONUMENT       WITNESS MONUMENT

BEARINGS ARE BASED ON:

OBSERVATION SHEETS

FIELD BOOK \_\_\_\_\_ PAGE # \_\_\_\_\_

SHEET 1 OF 2

SHOW A PLAN VIEW DRAWING DEPICTING THE CORNER MONUMENT AND SURROUNDING PHYSICAL FEATURES, INCLUDING THE EXCAVATION AREA AND DEPTH.

PLANNING & ZONING COMMITTEE ADOPTED THE ABOVE FORM ON 12/2/1982

CORNER CODE X-7-~~7~~(2)

BR1615

(B) Describe any record evidence, monument evidence, occupational evidence, testimonial evidence or any other material evidence you considered, and whether the monument was found or placed.

- 1873 RUGER VOL 2 PG 119 ESTABLISHED N/S LINE WITH MANY POINTS ON LINE. REFERENCED LINE TO ROAD & OTHER PHYSICAL FEATURES.
- 1874 RUGER VOL 2 PG 125 SET LIMESTONE 15X6X4 VAR 4-03 TO S 1/4 COR SEC 32 & VAR 4-33 TO E 1/4 COR SEC 32.
- 1877 RUGER VOL 2 PG 223 FD COR. EST. BY SELF IN FORMER SURVEY L.S. 15X6X4. 2656.00 TO E 1/4 COR SEC 32
- 1930 SUNNY VOL 3 PG 181 FOUND IRON ROD & REFERENCED SAME. FOLLOWING INFORMATION COPIED FROM VOL 3 PG 213 БЕЛОИТ СOUNTY SURVEYOR'S RECORD. SURVEY BY SUNNY OCT 12, 13 1932. NOTED ADDED 12/15/75 BY BARNES. 2650.6 TO W 1/4 COR, 1325.3 TO S 1/16TH OF NE 1/4, & 2646.85 TO N 1/4 COR SEC 32. RESET MON WITH 1"X2' PIPE FLUSH WITH CONC. PVMT 0.6' EAST OF CENTER OF PVMT.
- 1970 LEE SUB. BK 24 PG 35. FD CONC. MON. 2657.58 TO E 1/4 COR SEC 32.
- 1978 SCHOERDER CSM 8 PG 242 2646.00 TO S 1/4 COR 32.
- 1982 BARNES REMONUMENTATION. N88-38-57W 2655.14 TO W 1/4 COR, S88-43-48E 2657.04 TO E 1/4 COR, N0-35-20E 2646.66 TO N 1/4 COR, & S0-38-12W 2646.22 TO S 1/4 COR SEC 32.
- 1982 BARNES X-7 FOUND TIES OF RECORD & SET R/R SPIKE. ROAD RESURFACED IN SUMMER OF 1982.
- 1999 DOT MAP #655 FD PK

**FD R/R SPIKE & REFERENCE PINS.**

C) Was the corner restored through acceptance of (1) an obliterated evidence location, or, (2) a found perpetuated location?

**ACCEPTED FOUND PERPETUATED LOCATION.**

D) Describe any material discrepancy between the location of the corner as restored or reestablished and the location of that corner as previously restored or reestablished by distance and direction. Show the discrepancy on the plan view drawing under (a), above. Show the distances between the corner as previously restored or reestablished and (1) the corner as restored or reestablished, and (2) to at least 4 of the witness monuments shown on the drawing in (a), above.

(E) Was the corner reestablished through lost corner proportionate methods? If so, show the method, including the directions and distances to other public land survey corners used as evidence or used for proportioning the corner location.

I, Donald Barnes, hereby certify that the corner location as identified by the corner code index was determined by me under my direction and control and that this U.S. Public Land Survey Monument Record is correct and complete to the best of my knowledge and belief.

seal

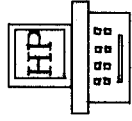
Donald Barnes  
May 10, 1999  
emboss

Number of included sheets 1

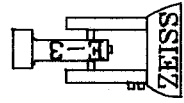
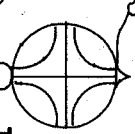
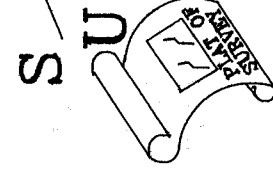
CORNER CODE X-7(1)  
(2)

**AN**

ROCK COUNTY PROJECTION



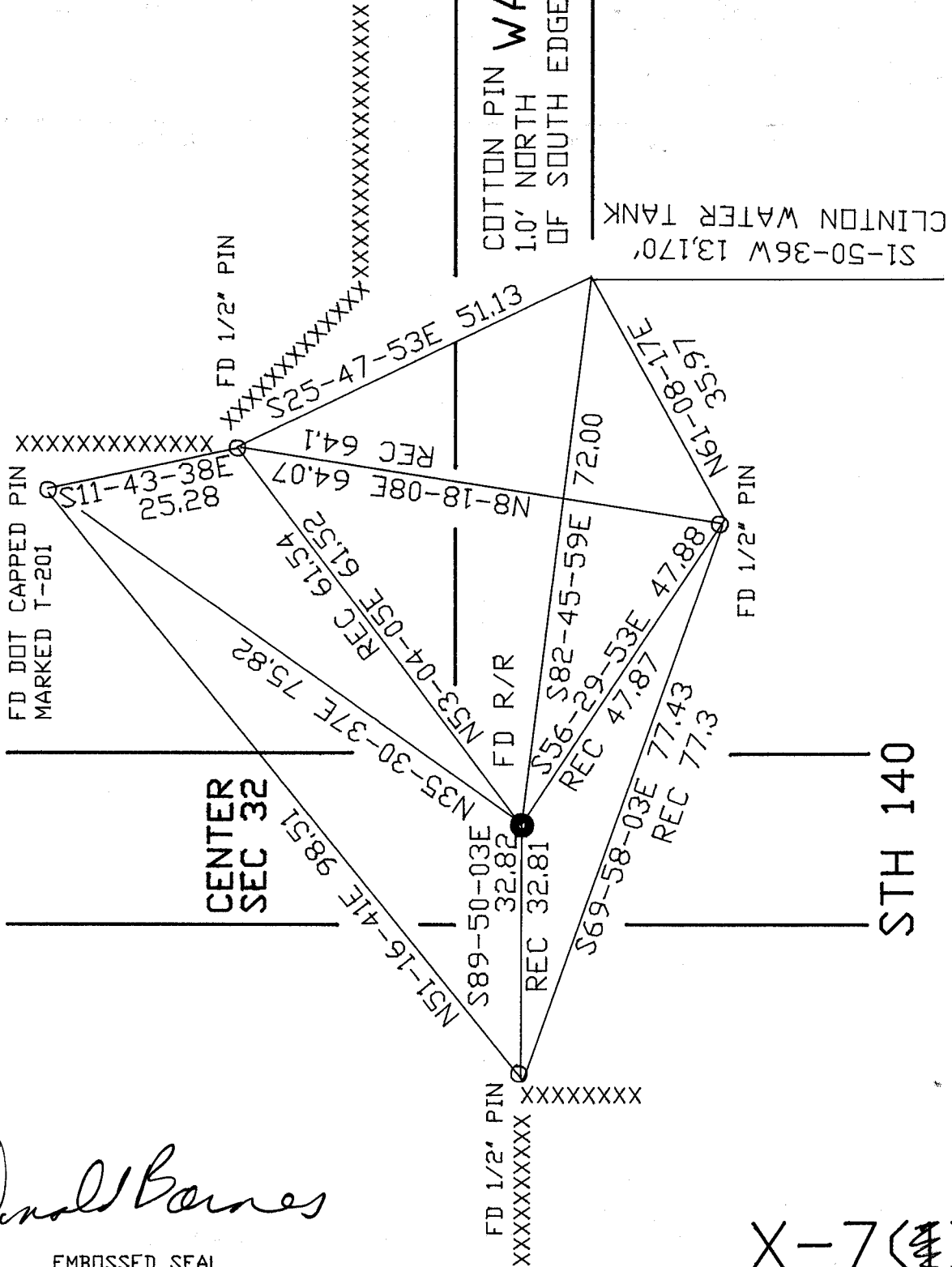
ROCK COUNTY SURVEY



OBSERVATION SHEETS

COTTON PIN WAITE RD  
1.0' NORTH  
OF SOUTH EDGE PVMT

S1-50-36W 13.170'  
CLINTON WATER TANK



*Donald Barnes*

EMBOSSED SEAL

May 10, 1999

X-7 (1)  
(2)