

U.S. PUBLIC LAND SURVEY MONUMENT RECORD

For Public Land Survey Corners in:

WI ADMINISTRATIVE CODE A-E 7.08 REQUIREMENT

T. 1 N., R. 14 E

CORNER CODE INDEX

A	1	2	3	4	5	6	7	8	9	10	11	12	13	14	15	16	17	18	19	20	21	22	23	24	25
B																									
C	6						5				A				3			2						1	
D																									
E																									
F																									
G	7						8				9				10			11						12	
H																									
J																									
K	18						17				16				15			14							13
L																									
M																									
N																									
O																									
P	19						20				21				22			23						24	
Q																									
R																									
S																									
T	30						29				28				27			26						25	
U																									
V																									
W																									
X	31						32				33				34			35						36	
Y																									
Z																									

CLINTON TWP

ROCK COUNTY WI

IF AVAILABLE
ROCK COUNTY COORDINATES PREFERRED

North _____ Elev. _____

East _____

Hor. Datum _____ Vert. Datum _____

LATITUDE _____ ELLIPS. HT. _____

LONGITUDE _____

GPS (X) _____ TRAVERSE (X) _____

BASED ON THE FOLLOWING CONTROL:

PLACE MONUMENT SYMBOL AT PROPER LOCATION ON ABOVE INDEX

CORNER MONUMENT

WITNESS MONUMENT

(a)

BEARINGS ARE BASED ON:

FIELD BOOK _____ PAGE # _____

SHEET 1 OF 4

SHOW A PLAN VIEW DRAWING DEPICTING THE CORNER MONUMENT AND SURROUNDING PHYSICAL FEATURES, INCLUDING THE EXCAVATION AREA AND DEPTH.

PLANNING & ZONING COMMITTEE ADOPTED THE ABOVE FORM ON 12/2/1982

CORNER CODE Z-9(2)

CL625 SE COR SEC 32 T1N R14E

(B) Describe any record evidence, monument evidence, occupational evidence, testimonial evidence or any other material evidence you considered, and whether the monument was found or placed.

1833 LYON EAST ALONG THE SOUTH LINE OF SEC 32

99' TO A SPRING RUN 1.98' @ N.W.

2640 SET POST FOR 1/4 SEC CORNER

WHITE OAK 13 N53W 161; WHITE OAK 32 S34E 17

5280 PASSING THROUGH A SLASHY? GLADE OF PRAIRIE, SET A POST FOR CORNER TO SEC 32 & 33.

BUR OAK 16 N15W 186 (122.76'); BUR OAK 16 N53E 226 (149.16')

1838 DEC 25 SPAULDING PG 844 NORTH BETWEEN SECTIONS 2 & 3 TOWNSHIP 46 NORTH RANGE 3 EAST OF THE 3RD PRINCIPAL MERIDIAN, VARIATION 6-20 EAST.

CHAINS

32.95 INTERSECTED THE NORTH BOUNDARY OF THE STATE OF ILLINOIS 17.62 CHAINS WEST OF THE CORNER TO SECTIONS 32 & 33 TOWNSHIP 1 NORTH RANGE 14 EAST OF THE 4TH PRINCIPAL MERIDIAN, IN THE WISCONSIN TERRITORY AND AT SAID INTERSECTION SET A POST FOR CORNER TO SECTIONS 2 & 3 TOWNSHIP 46 NORTH RANGE 3 EAST, FROM WHICH A BURR OAK 12 INCHES DIAMETER BEARS N61E 186 LINKS DISTANT MARK THE TREE B.T. THERE IS NO TREE IN SECTION 2 OR 3 CONVENIENT TO MARK.

1848 TERRITORIAL ROAD RECORDS. SHEET 1 PG 66 & SHEET 2 PG 67. JOHN McKEY, ROBBINS, WHITE WERE COMMISSIONERS APPOINTED BY THE LEGISLATURE. E.G. WHEELER, SURVEYOR SIGNED THE FOLLOWING CERTIFICATE: NOTE: AS WILL BE SEEN BY THE MINUTES OF THE CENTER LINE OF THE ROAD STRIKES THE EAST LINE OF ROCK COUNTY, 50 LINKS (33') NORTH FROM THE STATE LINE & CONTINUES PARALLEL TO THE STATE LINE UNTIL IT STRIKES THE EAST LINE OF SEC 36 T1N R12E. IT THEN ANGLES TO THE NORTH WEST MAKING 3 SMALL ANGLES TO THE TERMINUS(?). STAKES ARE SET IN THE CENTER LINE. THEY ARE MARKED & NUMBERED & ARE WITNESSED WHERE EVER LINE COULD BE FOUND CONVENIENT. E.G. WHEELER SURVEYOR.

1993 FIDIS Z9. HE DECLARED THE CORNER LOST. SET PK AND REFERENCED IT WITH CONCRETE MONUMENTS WITH IRON REBARS. THE CORNER WAS REESTABLISHED THROUGH SINGLE PROPORTIONATE BETWEEN TWO FOUND ALUMINUM MONUMENTS. SKETCH CALLS FOR AN ALUMINUM MONUMENT AT THE S 1/4 COR OF SEC 32 AND THE SE CORNER OF SECTION 33. A DISTANCE OF 2651.72 TO THE S 1/4 CORNER OF SEC 32 & THE SE CORNER OF SEC 33.

1997 KROEHN, DNR FORESTER. LETTER ABOUT BEARING TREE. THE TREE IS ABOUT 198 YEARS OLD.

NEW ROAD CONSTRUCTION DESTROYED FIDIS'S PK AND REFERENCE MONUMENTS. DUG & FOUND 1.8' BELOW OLD CONCRETE ROAD BED ROTTED WOOD STAKE SURROUNDED BY 3 HARD HEADS. STAKE IS ON LINE WITH N/S FENCE, 5.3' SOUTH CENTER PAVEMENT, AND N7-25E 122.9' (REC N12W 122.8') TO COMPUTED RECORD EDGE OF 16" CIRCLE BY COMPUTING THE CENTER OF THE TREE.

C) Was the corner restored through acceptance of (1) an obliterated evidence location, or, (2) a found perpetuated location?

I ACCEPTED THE FOUND ORIGINAL STAKE & BEARING TREE.

D) Describe any material discrepancy between the location of the corner as restored or reestablished and the location of that corner as previously restored or reestablished by distance and direction. Show the discrepancy on the plan view drawing under (a), above. Show the distances between the corner as previously restored or reestablished and (1) the corner as restored or reestablished, and (2) to at least 4 of the witness monuments shown on the drawing in (a), above.

WISCONSIN ADOPTED THE "MANUAL OF INSTRUCTIONS FOR THE SURVEY OF THE PUBLIC LANDS OF THE UNITED STATES" (1973). SEE WI STATUTES 59.62. THE MANUAL, SECTION 5-19, REQUIRES AN ORDER OF THE UNITED STATES SUPREME COURT OR AUTHORIZATION OF THE ADJOINING STATES PLUS CONGRESSIONAL APPROVAL TO REPLACE A LOST STATE BOUNDARY MONUMENT. SINCE AUTHORIZATION MUST BE SECURED BEFORE A LOST STATE BOUNDARY MARKER CAN BE RESET, I DID NOT ACCEPT FIDAS'S CORNER. ED GARVEY DEPUTY ATTORNEY GENERAL FOR THE WISCONSIN DEPARTMENT OF JUSTICE ATTORNEY GENERAL'S OFFICE WROTE AN OPINION DATED OCTOBER 18, 1983. THE OPINION SUPPORTS THE AUTHORIZATION PROCEDURE.

CL625 SE COR SEC 32 CLINTON TWP

(E) Was the corner reestablished through lost corner proportionate methods? If so, show the method, including the directions and distances to other public land survey corners used as evidence or used for proportioning the corner location.
FIDIS DECLARED THE CORNER LOST.

I, Donald Barnes, hereby certify that the corner location as identified by the corner code index was determined by me under by direction and control and that this U.S. Public Land Survey Monument Record is correct and complete to the best of my knowledge and belief.
seal

PAGE 2 OF 4

emboss

CORNER CODE

A-E 7.08 REQUIREMENT

Donald Barnes

JUNE 4, 1997

29(2)



State of Wisconsin DEPARTMENT OF NATURAL RESOURCES

Tommy G. Thompson, Governor
George E. Meyer, Secretary
Ruth E. Badger, District Director

DNR Forester
410 No. U.S. Hwy. 12
Janesville, Wisconsin 53546
TELEPHONE 608-756-9006

May 30, 1997

FILE REF:

Don Barnes
Rock County Surveyor
Rock County Courthouse
51 S. Main St.
Janesville, WI 53545

SUBJECT: Bur Oak Tree, Clinton Township

Dear Don:

I collected the following information pertaining to the bur oak tree near the Southeast corner of section 32, Clinton Township, Rock County.

Circumference: 14.3 feet
Diameter: 52.7 inches
Height: ± 80 feet

I was able to extract a 9½ inch long sample core from the tree. The growth rings on this section showed fairly consistent growth over the past 71 years. Assuming an average growth rate of 7½ rings per inch, this tree would be around 198 years old.

A 16 inch diameter tree growing at this rate would have been around age 60 (range of 50 to 70) when the survey took place. I hope that this is reasonably close to the date of the original survey (between 1849 and 1869?).

I hope that this information is helpful to you. Please contact me if you have questions regarding my findings, or if you need further assistance.

Sincerely,

Mary Ann
Mary Ann Kroehn
DNR Forester

Quality Natural Resources Management
Through Excellent Customer Service



#178 P.1/1

7575516

05-30-97 02:23PM TO

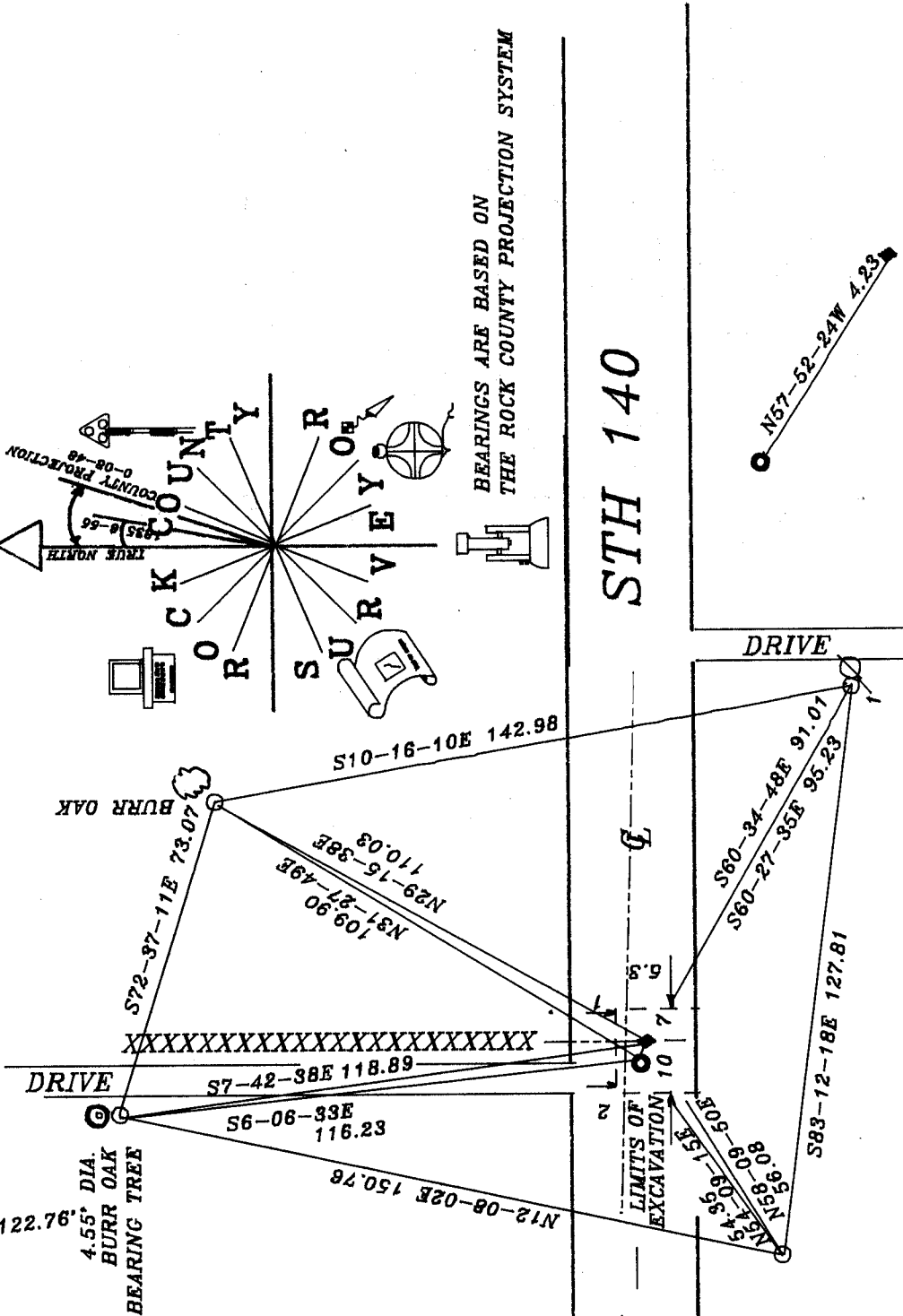
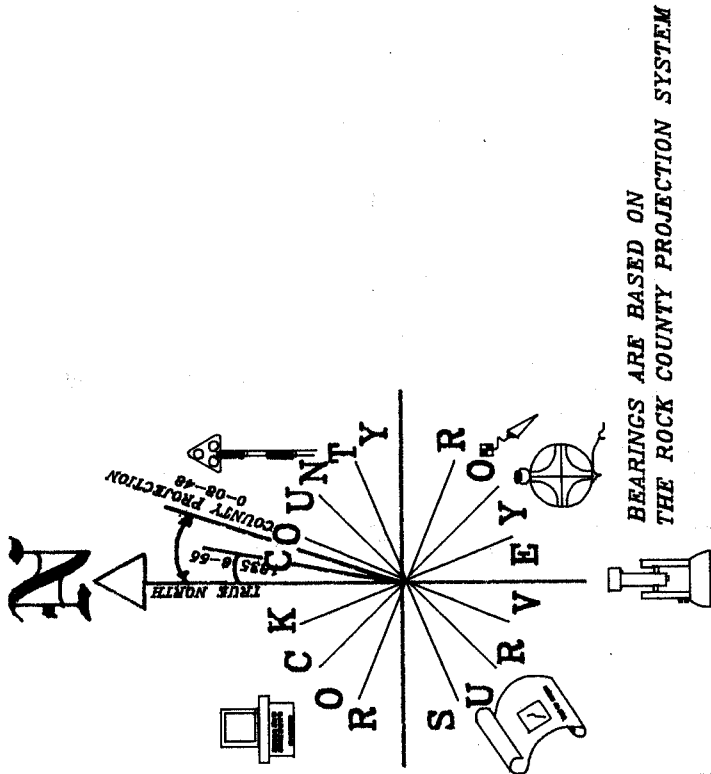
608 752 1247

FROM Rock Co. FSA

Donald Barnes
JUNE 4 1997

30F4

Z-9(2)



S7-25E 122.88
BEARING TREE
1833 REC N12W 122.76

4.55' DIA.
BURR OAK
BEARING TREE

XXXXXXXXXXXXXXXXXXXXXXXXXXXX

FD ALUM. MON.
S 1/4 COR
SEC 32

SE COR
SEC 32

- 3/4X24 REBOD
- FIDAS - COMPUTED POSITION
- ◆ SE COR SEC 32
FOUND STAKE WITH 3 HARD HEAD STONES

FIELD BOOK #2 PG 34-36

Donald Barnes

EMBOSSSED
SEAL
JUNE 4, 1997

4 OF 4

Z-9(2)