

Paper weight-110# (minimum)

Black nonfading ink required

U.S. PUBLIC LAND SURVEY MONUMENT RECORD

For Public Land Survey Corners In:
T. 4 N. R. 4 E. 4th P.M.
CORNER CODE INDEX

WI ADMINISTRATIVE CODE A-E 7.08 REQUIREMENT
REV 10/23/2004 USMONREC.DWG

| | | | | | | | | | | | | | | | | | | | | | | | | | | |
|---|----|---|---|---|---|---|---|---|---|----|----|----|----|----|----|----|----|----|----|----|----|----|----|----|----|---|
| A | 1 | 2 | 3 | 4 | 5 | 6 | 7 | 8 | 9 | 10 | 11 | 12 | 13 | 14 | 15 | 16 | 17 | 18 | 19 | 20 | 21 | 22 | 23 | 24 | 25 | A |
| B | | | | | | | | | | | | | | | | | | | | | | | | | | B |
| C | 6 | | | | | | | | | | | | | | | | | | | | | | | | | C |
| D | | | | | | | | | | | | | | | | | | | | | | | | | | D |
| E | | | | | | | | | | | | | | | | | | | | | | | | | | E |
| F | | | | | | | | | | | | | | | | | | | | | | | | | | F |
| G | 7 | | | | | | | | | | | | | | | | | | | | | | | | | G |
| H | | | | | | | | | | | | | | | | | | | | | | | | | | H |
| J | | | | | | | | | | | | | | | | | | | | | | | | | | J |
| K | 18 | | | | | | | | | | | | | | | | | | | | | | | | | K |
| L | | | | | | | | | | | | | | | | | | | | | | | | | | L |
| M | | | | | | | | | | | | | | | | | | | | | | | | | | M |
| N | | | | | | | | | | | | | | | | | | | | | | | | | | N |
| O | | | | | | | | | | | | | | | | | | | | | | | | | | O |
| P | 19 | | | | | | | | | | | | | | | | | | | | | | | | | P |
| Q | | | | | | | | | | | | | | | | | | | | | | | | | | Q |
| R | | | | | | | | | | | | | | | | | | | | | | | | | | R |
| S | | | | | | | | | | | | | | | | | | | | | | | | | | S |
| T | 30 | | | | | | | | | | | | | | | | | | | | | | | | | T |
| U | | | | | | | | | | | | | | | | | | | | | | | | | | U |
| V | | | | | | | | | | | | | | | | | | | | | | | | | | V |
| W | | | | | | | | | | | | | | | | | | | | | | | | | | W |
| X | 31 | | | | | | | | | | | | | | | | | | | | | | | | | X |
| Y | | | | | | | | | | | | | | | | | | | | | | | | | | Y |
| Z | | | | | | | | | | | | | | | | | | | | | | | | | | Z |

PLACE MONUMENT SYMBOL AT PROPER LOCATION ON ABOVE INDEX

PORTER TWP
ROCK COUNTY WI

IF AVAILABLE
ROCK COUNTY COORDINATES PREFERRED

North _____ Elev. _____

East _____

Hor. Datum _____ Vert. Datum _____

LATITUDE _____ ELLIPS. HT. _____

LONGITUDE _____

NAD83(91) _____ NETWORK ADJ. YR _____

GPS (X) _____ TRAVERSE (X) _____

BASED ON THE FOLLOWING CONTROL:

CORNER MONUMENT WITNESS MONUMENT

BEARINGS ARE BASED ON: -----

FIELD BOOK _____ PAGE # _____ SHEET 1 OF 2

SHOW A PLAN VIEW DRAWING DEPICTING THE CORNER MONUMENT AND SURROUNDING PHYSICAL FEATURES, INCLUDING THE EXCAVATION AREA AND DEPTH.

PLANNING & ZONING COMMITTEE ADOPTED THIS FORM ON 12/2/1982

CORNER CODE E-7 (1)

PO524

81/4CORSEC5

(B) Describe any record evidence, monument evidence, occupational evidence, testimonial evidence or any other material evidence you considered, and whether the monument was found or placed.

- 1833 HARRISON (NOV 4TH) T4N R11E 4TH MER. EAST BET. SECS. 5 & 8
 - 2640.00 TEMPY 1/4 SEC. COR.
 - 3960.0 LEAVE PRAIRIE & ENTER TIMBER
 - 4290.0 CREEK 16.5' CR8 S.E.
 - 5319.60 INT. E BDY 11.88' SOUTH OF POST LAND 1ST 3960' ROLLING HANDSOME 1ST RATE PRAIRIE SOIL GOOD RUN OF MILL WOODLAND WITH RED BURR & WHITE OAK WEST COR. WEST BET. SECS. 5 & 8
 - 2659.8 QUARTER SEC COR SET POST & RAISED MOUND OF EARTH & SOD
 - 5319.60 SEC COR.
- 1870 RUGER VOL 2 PG 24 FD HARD HEAD STONE 15X8X5 AT COR.
- 1870 RUGER VOL 2 PG 25 FD HARD HEAD STONE 15X8X5 AT COR. USED TO SUBDIVIDE SEC 8
- 1873 LEE VOL 2 PG 103 FD HH AT COR, VAR 8-37 2696.10 TO SE COR SEC 5, VAR 7-05 1096.92 TO E/W RD
- 1892 UNK VOL 6 PG 320 (BARNES) INFORMATION FD IN FIELD BOOK B-2 PG 116. STATES NOTHING ABOUT MON 2696.10 TO STAKE SURROUNDED BY STONE @ NE COR SEC 8.
- 1963 BATTERMAN VOL 4 PG 67 DUG & FD 15X8X5 HH 9' DEEP. REFERENCED SAME.
- 1963 LEE #3559 DUG & FD 15X8X5 HH. NORTH ALONG N/S 1/4 LINE 1037.40 TO CENTER OF PVMT, N89-23-45W 141.94 ALONG THE SOUTH LINE OF SEC TO PIPE
- 1984 BARNES E-7 SET R/R SPIKE FROM TIE SHEETS THAT WERE THE COUNTY SURVEYOR'S RECORDS. 3 EAST OF WEST PVMT EDGE
- 1984 COMBS CSM 11-620 FD RR SET RR @ CENTER OF S 1/4 COR SEC 8, FD ALUM @ CENTER OF SEC 8
- 1992 KARNS CSM VOL 15 PG 517 ROCK COUNTY MON.
- 1995 SHROEDER CSM VOL 18 PG 437 STATES NOTHING ABOUT MON.
- 2002 WIDOT #24913 8TH 59 FD R/R SPIKE NAD83 92,706.263M; 663,697.232M
- 2002 COMBS #14500 R/R SPIKE N1-32-25E 2618.44 TO SET PIN @ CENTER OF SEC 5, N1-32-25E 5204.62 TO FD R/R @ N 1/4 COR SEC 5.

FD R/R SPIKE 0.2' DEEP & REF. PIPES.

C) Was the corner restored through acceptance of (1) an obliterated evidence location, or, (2) a found perpetuated location?

ACCEPTED FD R/R SPIKE.

D) Describe any material discrepancy between the location of the corner as restored or reestablished and the location of that corner as previously restored or reestablished by distance and direction. Show the discrepancy on the plan view drawing under (a), above. Show the distances between the corner as previously restored or reestablished and (1) the corner as restored or reestablished, and (2) to at least 4 of the witness monuments shown on the drawing in (a), above.

I, Donald Barnes, hereby certify that the corner location as identified by the corner code index was determined by me under my direction and control and that this U.S. Public Land Survey Monument Record is correct and complete to the best of my knowledge and belief.

Seal

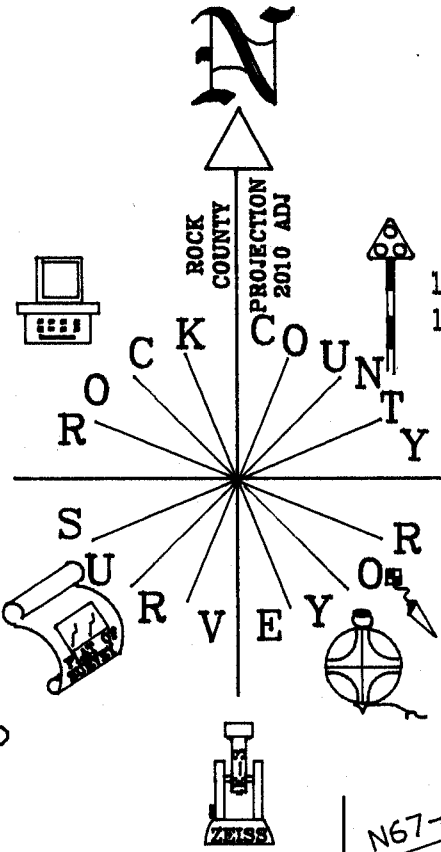
SHEET 1 OF 2

Emboss

APR 28 2010
Donald Barnes

CORNER CODE E-7(1)

A.E. 7.08 REQUIREMENT



1963 BATTERMAN VOL 4 PG 67
 1984 BARNES E-7
 FB#2 PG 43
 OBSERVATION SHEET #524
 1963 VOL 4 PG 67
 1984 E-7

S 1/4 COR
 SEC 5
 PORTER TWP
 T4N R11E

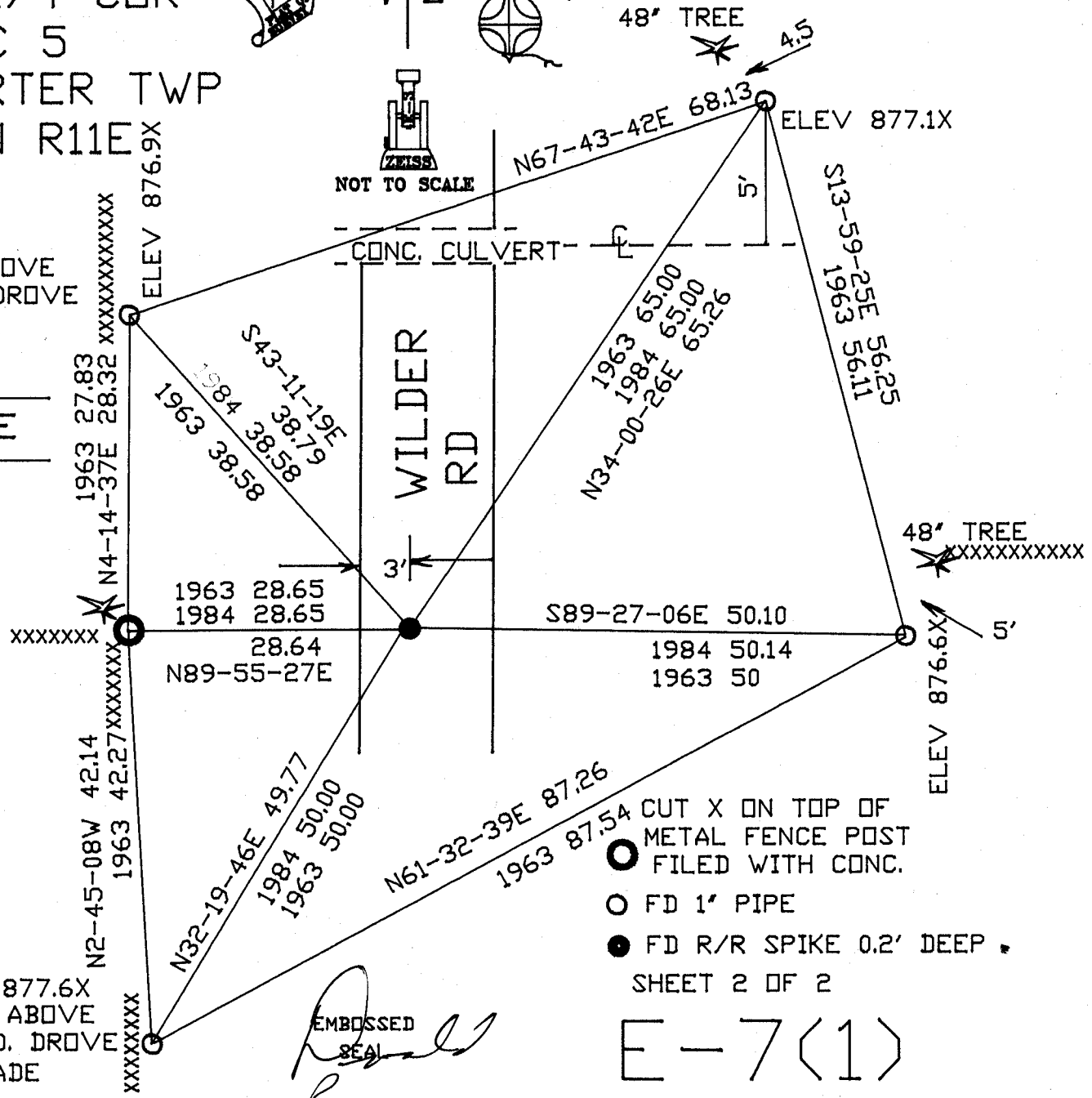
FD 8" ABOVE
 GROUND. DROVE
 TO GRADE

LANE

NOT TO SCALE

CONC. CULVERT

WILDER
 RD



ELEV 877.6X
 FD 8" ABOVE
 GROUND. DROVE
 TO GRADE

- CUT X ON TOP OF METAL FENCE POST FILED WITH CONC.
- FD 1" PIPE
- FD R/R SPIKE 0.2' DEEP

SHEET 2 OF 2

EMBOSSED SEAL
Barnes

E-7(1)

APR 28, 2010