

U.S. PUBLIC LAND SURVEY MONUMENT RECORD

For Public Land Survey Corners In:

WISCONSIN ADMINISTRATIVE CODE A-E 7.08 REQUIREMENT

T. 4 N. R. 11 E. 4th P.M.

PORTER TWP
ROCK COUNTY WI

CORNER CODE INDEX

A	1	2	3	4	5	6	7	8	9	10	11	12	13	14	15	16	17	18	19	20	21	22	23	24	25	A
B																										B
C			6		5		4		3		2		1													C
D																										D
E			◆																							E
F			7		8		9		10		11		12													F
G																										G
H																										H
J																										J
K																										K
L			18		17		16		15		14		13													L
M																										M
N																										N
O																										O
P			19		20		21		22		23		24													P
Q																										Q
R																										R
S																										S
T			30		29		28		27		26		25													T
U																										U
V																										V
W																										W
X			31		32		33		34		35		36													X
Y																										Y
Z																										Z
	1	2	3	4	5	6	7	8	9	10	11	12	13	14	15	16	17	18	19	20	21	22	23	24	25	

PLACE MONUMENT SYMBOL AT PROPER LOCATION ON ABOVE INDEX

IF AVAILABLE
ROCK COUNTY COORDINATES PREFERRED

North 323436.755 Elev. _____

East 434750.836

Hor. Datum _____ Vert. Datum _____

LATITUDE _____

LONGITUDE _____

ELLIPS. HT. _____

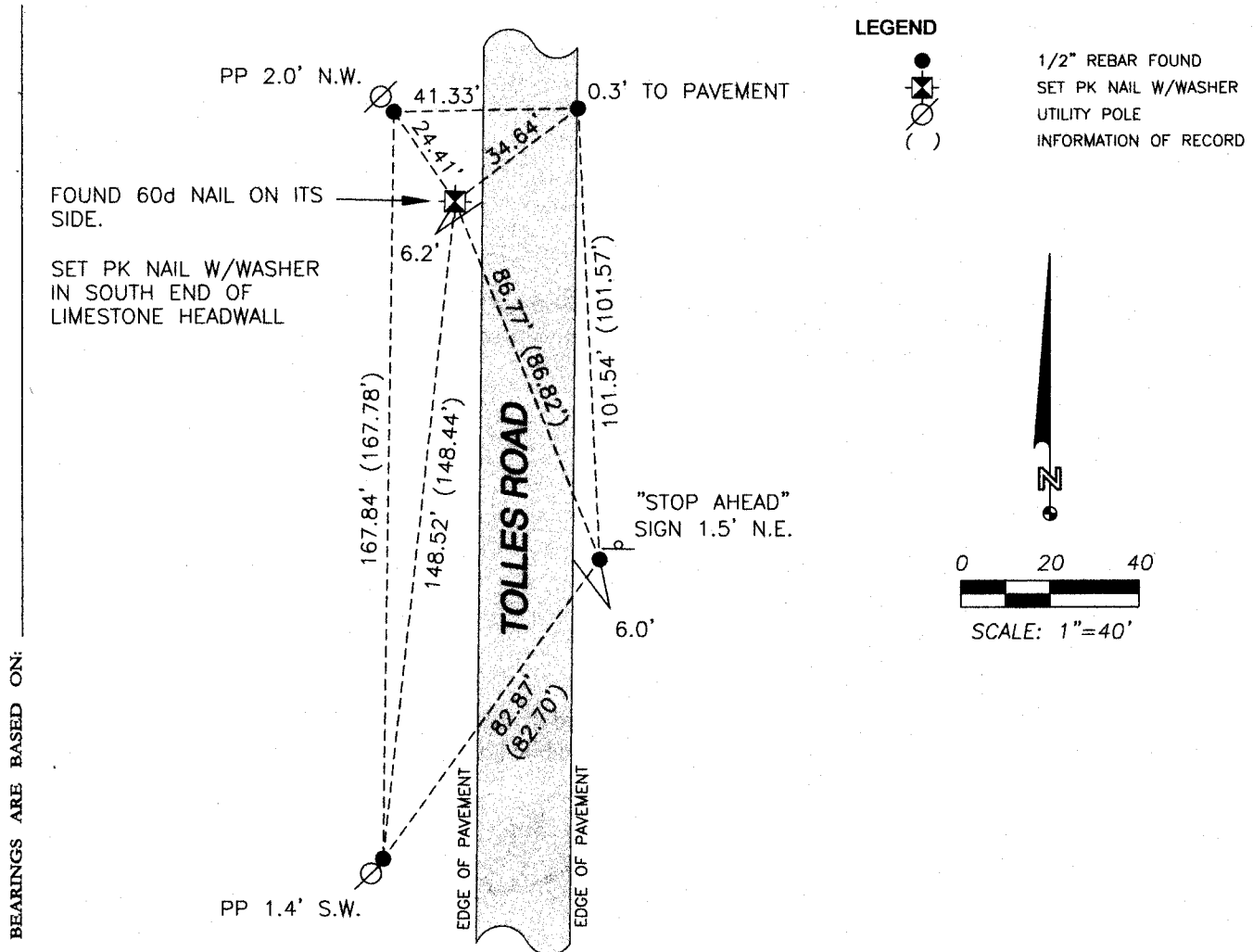
NAD83(91) _____ NETWORK ADJ. YR _____

GPS (X) _____ TRAVERSE (X) _____

BASED ON THE FOLLOWING CONTROL:

◆ CORNER MONUMENT ○ WITNESS MONUMENT

(A)



FIELD BOOK 1 PAGE # 75

SHEET 1 OF 1

SHOW A PLAN VIEW DRAWING DEPICTING THE CORNER MONUMENT AND SURROUNDING PHYSICAL FEATURES, INCLUDING THE EXCAVATION AREA AND DEPTH.

CORNER CODE 522P E-3(1)

(B) Describe any record evidence, monument evidence, occupational evidence, testimonial evidence or any other material evidence you considered, and whether the monument was found or placed.

I FOUND FOUR (4) TIES OF RECORD AS SET BY ROCK COUNTY SURVEYOR DONALD BARNES, S-1216, AND AS SHOWN ON TIE SHEET DATED AUGUST 8, 1988. I ALSO FOUND A 60d NAIL LYING ON ITS SIDE. I TRIED TO RESET THIS NAIL BUT COULD NOT. I SET A PK NAIL W/WASHER IN THE SOUTH END OF A LIMESTONE HEADWALL AT THE COORDINATE LOCATION PROVIDED BY THE ROCK COUNTY SURVEYOR'S OFFICE.

(C) Was the corner restored through acceptance of (1) an obliterated evidence location, or, (2) a found perpetuated location?

FOUND PERPETUATED LOCATION

(D) Describe any material discrepancy between the location of the corner as restored or reestablished and the location of that corner as previously restored or reestablished by distance and direction. Show the discrepancy on the plan view drawing under (A) above. Show the distances between the corner as previously restored or reestablished and (1) the corner as restored or reestablished, and (2) to at least 4 of the witness monuments shown on the drawing in (A), above.

(E) Was the corner reestablished through lost corner proportionate methods? If so, show the method, including the directions and distance to other public land survey corners used as evidence or used for proportioning the corner location.

NO.

I, Steven L. Oftedahl, hereby certify that the corner location as defined by the corner code index was determined by me under my direction and control and that this U.S. Public Land Survey Monument Record is correct and complete to the best of my knowledge and belief.



Steven L. Oftedahl 10-19-2012

SHEET 1 OF 1

CORNER CODE 522P E-3()