

PUBLIC LAND SURVEY MONUMENT RECORD

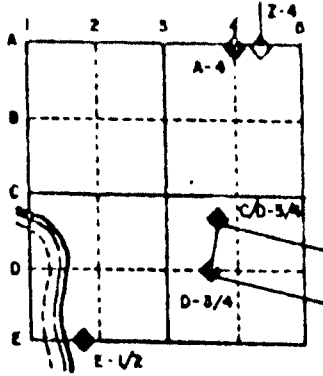
For Public Land Survey Corners in the
T. A N., R. 11 E.

CORNER CODE INDEX

	1	2	3	4	5	6	7	8	9	10	11	12	13	14	15	16	17	18	19	20	21	22	23	24	25
A																									
B																									
C	6																								
D		5																							
E			4																						
F				3																					
G					2																				
H																									
I	7																								
J		8																							
K			9																						
L				10																					
M					11																				
N						12																			
O							13																		
P								14																	
Q									15																
R										16															
S											17														
T												18													
U													19												
V														20											
W															21										
X																22									
Y																	23								
Z																		24							
																			25						
																				26					
																					27				
																						28			
																							29		
																								30	
																									31
																									32
																									33
																									34
																									35
																									36

PLACE MONUMENT SYMBOL (◆) AT PROPER LOCATION ON ABOVE INDEX

EXAMPLE



PORTER TWP
ROCK COUNTY WI

IF AVAILABLE
STATE PLANE COORDINATES

North (Y) _____ Eleve. (Z) _____
 East (X) _____ Zone _____
 Hor. Datum _____ Vert. Datum _____

◆ CORNER MONUMENT

○ WITNESS MONUMENT

BEARINGS ARE BASED ON:

MICROFILMED

SHEET ___ OF ___

CORNER CODE: A9(1)

(B) Describe any record evidence, monument evidence, occupational evidence, testimonial evidence or any other material evidence you considered, and whether the monument was found or placed.

1834 HARRISON ORIGINAL SURVEYOR. 112.20 EAST OF SW CORNER OF SECTION 33 T5N R11E.

1870 RUGER VOL 2 PG 24 FOUND REMAINS OF OLD STAKE ALSO FOUND BEARING TREE & STUMP OF ANOTHER BEARING TREE. SET LIMESTONE 12X7X3 & PUT PIECE OF WHITE BRICK ON NORTH & SOUTH SIDES.

1874 RUGER VOL 2 PG 129 "SEE PAGE 19-24" CALLS FOR 1302.84' T THE N 1/16th CORNER OF THE NW 1/4 OF SECTION 4 & 1287.00 TO THE W 1/16th CORNER OF THE NW 1/4 OF SECTION 4. 112.20' EAST OF THE SW CORNER OF SECTION 33 T5N R11E

1962 BATTERMAN JR. VOL 4 PG 144 DUG 20X10X3 HOLE FOUND NOTHING. LATTER SURVEY BY THOM (VOL 4 PG 421) SHOWS THAT CORNER MIGHT BE FOUND NORTH OF AREA AS SEARCHED.

1973 LEE VOL 4 PG 144 SET 1" PIPE ON LINE WITH THE N 1/4 & NE CORNER AND DOUBLED DISTANCE FROM THE NE CORNER. REFERENCED SAME.

1985 WEIR A-9 A R/R SPIKE WAS FOUND AT THE CORNER AS REFERENCED BY A TIE SHEET OF 2/28/1968 IN DANE COUNTY SURVEYOR'S OFFICE.

FOUND 1" PIPE 0.3' DEEP AND REFERENCE PIPES.

C) Was the corner restored through acceptance of (1) an obliterated evidence location, or, (2) a found perpetuated location?
ACCEPTED FOUND PIPE

D) Describe any material discrepancy between the location of the corner as restored or reestablished and the location of that corner as previously restored or reestablished by distance and direction. Show the discrepancy on the plan view drawing under (a), above. Show the distances between the corner as previously restored or reestablished and (1) the corner as restored or reestablished, and (2) to at least 4 of the witness monuments shown on the drawing in (a), above.

(E) Was the corner reestablished through lost corner proportionate methods? If so, show the method, including the directions and distances to other public land survey corners used as evidence or used for proportioning the corner location.

I, Donald Barnes, hereby certify that the corner points as identified by the corner code index were, in a field survey on, SEP 16, 1993, established, re-established, monumented, re-monumented, recovered or restored as expressed below and in conformance with the regulations and rules as required in the current manual of survey instructions of the United States Department of Interior, Bureau of Land Management.

seal
Donald Barnes
NOV 13 1993

COUNTY SURVEYOR FILING DATA

Date of computer entry _____

Date microfilmed _____

Number of included sheets _____
CORNER CODE

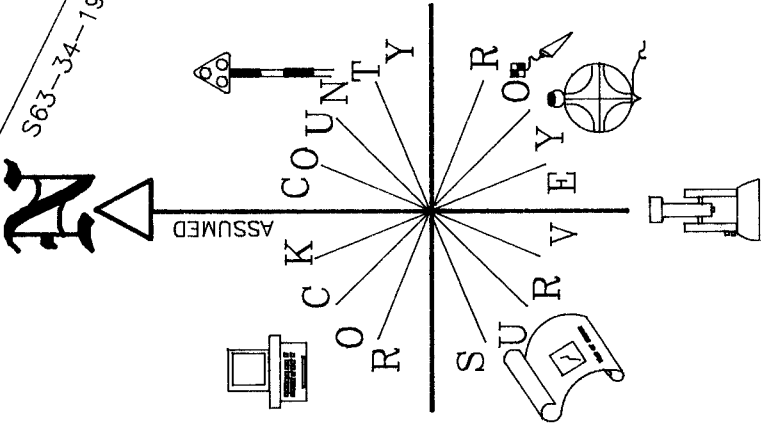
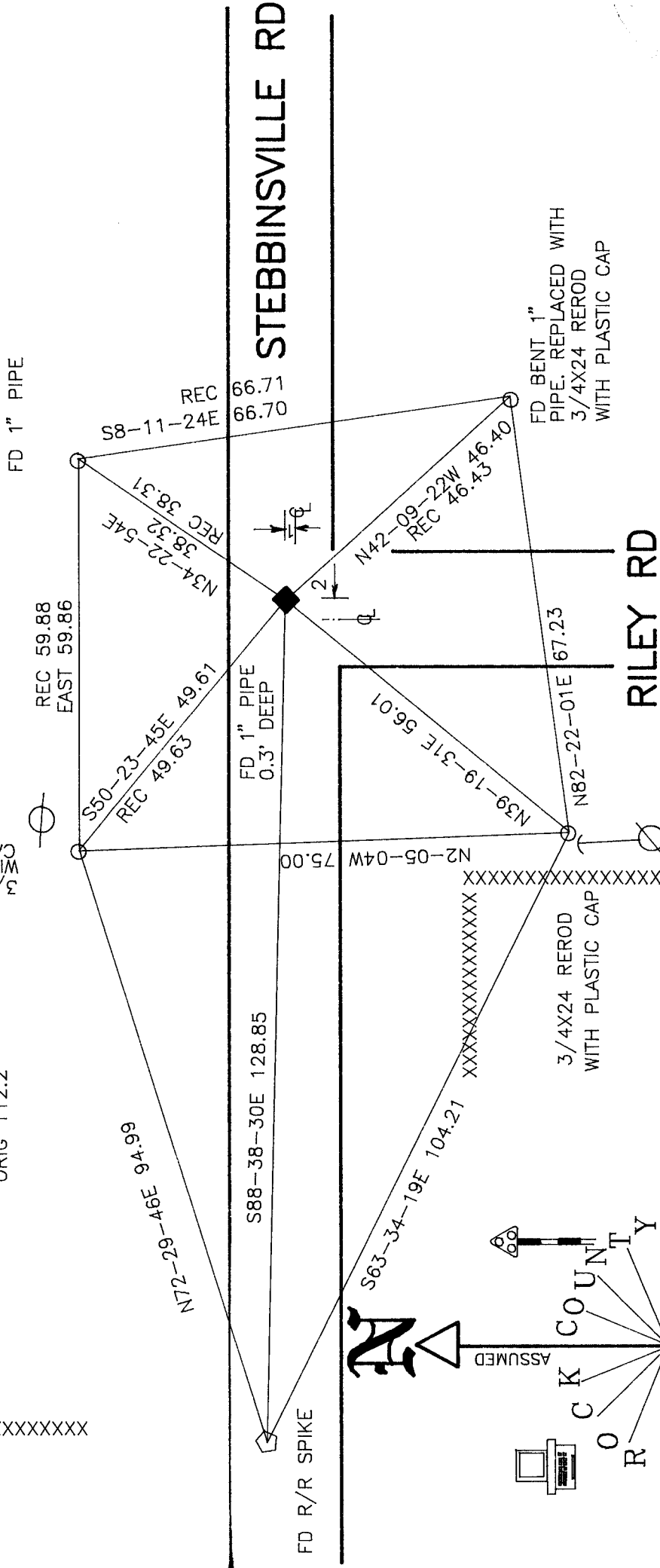
AFFIX YOUR LAND SURVEYOR SEAL

Donald Barnes
 Nov 12, 1993

XXXXXXXXXXXXXXXXXXXXXXXXXXXX

NW COR SEC 4 TO SW COR SEC 33
 RUGER 187 112.2'
 ORIG 112.2

3/4X24" REROD
 WITH YELLOW PLASTIC
 CAP



FB#3 PG 48

A9(1)