

Paper weight-110# (minimum)

Black nonfading ink required

U.S. PUBLIC LAND SURVEY MONUMENT RECORD

For Public Land Survey Corners In:
T. 4 N. R. 14 E. 4th P.M.
CORNER CODE INDEX

WI ADMINISTRATIVE CODE A-E 7.08 REQUIREMENT
REV 10/23/2004 USMONREC.DWG

A	1	2	3	4	5	6	7	8	9	10	11	12	13	14	15	16	17	18	19	20	21	22	23	24	25	A
B		6																								B
C			5																							C
D				4																						D
E					3																					E
F						2																				F
G							1																			G
H			7																							H
I				8																						I
J					9																					J
K						10																				K
L							11																			L
M								12																		M
N			18																							N
O				17																						O
P					16																					P
Q						15																				Q
R							14																			R
S								13																		S
T			19																							T
U				20																						U
V					21																					V
W						22																				W
X							23																			X
Y								24																		Y
Z									25																	Z
	1	2	3	4	5	6	7	8	9	10	11	12	13	14	15	16	17	18	19	20	21	22	23	24	25	

PORTER TWP
ROCK COUNTY WI

IF AVAILABLE
ROCK COUNTY COORDINATES PREFERRED

North _____ Elev. _____

East _____

Hor. Datum _____ Vert. Datum _____

LATITUDE _____ ELLIPS. HT. _____

LONGITUDE _____

NAD83(91) _____ NETWORK ADJ. YR _____

GPS (X) _____ TRAVERSE (X) _____

BASED ON THE FOLLOWING CONTROL:

◆ CORNER MONUMENT ○ WITNESS MONUMENT

BEARINGS ARE BASED ON: _____

FIELD BOOK _____ PAGE # _____

SHEET 1 OF 5

SHOW A PLAN VIEW DRAWING DEPICTING THE CORNER MONUMENT AND SURROUNDING PHYSICAL FEATURES, INCLUDING THE EXCAVATION AREA AND DEPTH.

PLANNING & ZONING COMMITTEE ADOPTED THIS FORM ON 12/2/1982

CORNER CODE A-3(1)

PO502

N1/4CORSEC6

(B) Describe any record evidence, monument evidence, occupational evidence, testimonial evidence or any other material evidence you considered, and whether the monument was found or placed.

1833 MULLETT & BRINK (SEP 22ND) T5N R11E WEST ON SOUTH
SIDE SECTION 31
2640 SET QUARTER SECTION POST BUR OAK 8 N41E
58.08'; BLACK OAK 14 N14W 42.9'
5187.60 INTERSECTED RANGE LINE AT TEMPORARY
POST. SET POST CORNER TOWNSHIPS 4 & 5
RANGES 10 & 11 E WHITE OAK 14 S11E 56.76';
WHITE OAK 18 N1 1/2W 80.52'
LAND ROLLING SECOND RATE WHITE BLACK AND
BUR OAK. SEP 22 1833

1833 ORIG GOV PLAT NW COR SEC 5 PORTER TWP 18 66.00' EAST
1857 TOWN RD RECORDS BK 1 PG 10 & 11 BEGINNING AT THE
SOUTH EAST COR OF SAID TOWN OF RUTLAND BEING THE
SOUTH EAST COR OF SEC 36 T5N OF RANGE 10E AND
THENCE NORTH OF SW COR SEC 32 DUNKIRK TWP.
ON THE LINE 132.0' TO THE NORTH WEST CORNER OF THE
TOWN OF PORTER BEING THE NW COR OF SEC 6 T4N R11E
THE LENGTH OF THE ABOVE DESCRIBED RD IS 132.0' AND IS
66' WIDE THE LINE SURVEYED BEING THE CENTER OF THE
SAME. VARIATION OF NEEDLE 8 COURSE GIVEN ACCORDING
TO THE TRUE MERIDIAN.

1867 (SEP) TOWN RD RECORDS BK 2 PG 5 "" AND THAT THE
AFORESAID SUPERVISORS IN CONNECTION WITH THE
UNDERSIGNED SUPERVISORS OF THE TOWN OF DUNKIRK IN
THE COUNTY OF DANE, HAVING BEEN SATISFIED THAT THE
LAW HAS IN ALL RESPECTS BEEN COMPLIED WITH ; IT IS
HEREBY ORDERED AND DETERMINED, AND WE DO HEREBY
ORDER AND DETERMINE THAT A HIGHWAY BE AND THE SAME
IS HEREBY LAID OUT PURSUANT TO SAID APPLICATION ;
DESCRIBED AS FOLLOWS, TO WIT : BEGINNING AT THE NE
COR OF SEC 5 IN SAID TOWN OF PORTER, ON THE TOWN
LINE BETWEEN SAID TOWN AND THE TOWN OF DUNKIRK
(DUNKIRK BEING IN THE COUNTY OF DANE) AND THENCE
RUNNING WEST ON SAID LINE UNTIL IT INTERSECTS MR.
SAVAGES ORCHARD (SAID ORCHARD BEING IN THE SW
CORNER OF SEC 31 IN THE TOWN OF DUNKIRK DANE
COUNTY, THENCE BEARING SOUTH 2 RODS: THENCE WEST
TO THE COOKVILLE AND DUNKIRK RD RUNNING SOUTH ON
THE CENTER LINE OF SEC 6 IN PORTER THE SAID HIGHWAY
IS LAID OUT RUNNING THROUGH THE NORTH HALF OF THE
NORTH EAST 1/4 OF SEC 5 AND THE N 1/2 OF THE NE 1/4 OF
SEC 5 ALSO THE NORTH 1/2 OF THE NE 1/2 OF SEC 6 IN THE
TOWN OF PORTER, THE WHOLE LENGTH OF THE ROAD BEING
ONE AND ONE HALF (1 1/2) MILES MORE OR LESS. THE LINE
OF SAID SURVEY TO BE THE CENTER OF SAID HIGHWAY; AND
THE SAME IS ESTABLISHED FOUR RODS IN WIDTH.

1867 (SEP) TOWN RD RECORDS BK 2 PG 7 DESCRIBED AS
FOLLOWS, TO WIT : BEGINNING AT THE NE COR OF SEC 5 IN
SAID TOWN OF PORTER AND AT THE SE COR OF SEC 32 IN
THE TOWN OF DUNKIRK, DANE COUNTY; THENCE RUNNING
WEST ON SAID LINE UNTIL NEAR THE CORNER OF MR.
SAVAGES ORCHARD. SAID ORCHARD BEING ON THE SE 1/4
OF SEC 31 IN SAID TOWN OF DUNKIRK; THENCE BEARING
SOUTH 2 RODS; THENCE WEST UNTIL IT INTERSECTS THE
COOKVILLE AND DUNKIRK ROAD RUNNING NORTH AND
SOUTH ON THE CENTERLINE OF SEC 6 IN PORTER AND THE
NORTH AND SOUTH CENTERLINE OF SEC 31 IN DUNKIRK,
DANE COUNTY. THE SAID HIGHWAY IS LAID OUT ON THE
NORTH LINE OF SEC 5 AND ON THE NORTH LINE OF SEC 6
UNTIL IT REACHES THE NORTH

SHEET 1 OF 5
CORNER CODE A-3(1)

Donald Lane
6/11/2009

P0502 N1/4CORSEC6

- WEST CORNER OF THE NE 1/4 OF SAID SEC 6 [N 1/4 COR SEC 6] INTERSECTING THE RD RUNNING FROM COOKVILLE TO DUNKIRK BEARING SOUTH 2 RODS OPPOSITE J.W. SAVAGES ORCHARD AND THE WHOLE LENGTH OF SAID ROAD BEING ONE AND HALF MILES MORE OR LESS THE LINE OF SAID SURVEY TO BE THE CENTER LINE OF SAID HIGHWAY AND THE SAME IS ESTABLISHED 4 RODS IN WIDTH.**
- 1893 BLEEDORN VOL 2 PG 473 DROVE A PIECE OF LIGHTNING ROD 73.59 AT THE N 1/4 CORNER OF SECTION 6 T4N R11E. HE SHOWS THIS AS 73.59 EAST OF THE SOUTH QUARTER CORNER OF SECTION 31 T5N R11E. HE STATES THAT HE FOUND A RED HH AT THE SOUTH QUARTER CORNER OF SECTION 31. HE USED THIS CORNER TO SUBDIVIDE SECTION 6.**
- 1933 SUNNY VOL 3 PG 227 SET 1 1/2" PIPE 4' LONG FOR NORTH QUARTER CORNER OF SECTION 6 T4N R11E. 69.5X' EAST OF CENTER OF THE ROAD, 2635.8X TO NE COR SEC 6, 2609.6 TO CUT STONE @ NW COR SEC 6, 2550.5X TO 1 1/2 PIPE @ CENTER OF SEC 6, 5192.7X TO S 1/4 COR SEC 6, ANGLE 90-42-XX FROM NE COR SEC 6 TO N/S CENTER OF GRAVEL RD.**
- 1933 SUNNY #3567 SET 1 1/2 PIPE 4' LONG SURROUNDED BY STONES. 69.5 EAST OF S 1/4 COR SEC 31, 2635.8X TO FD PAINTED HH @ NE COR SEC 6. @ S 1/4 COR SEC 31 SPIKE SET BY ME. 2 SPIKES SET BY COUNTY ENGINEER TO THE SOUTH & TO THE NORTH ON N/S CENTERLINE OF RD. DISTANCE OF 23.34 BETWEEN SPIKES OR THE S 1/4 COR SEC 31 & A SPIKE. 2609.6 TO CUT STONE @ NW COR SEC 6. ANGLE 90-42 @ PVMT CENTER FROM NE COR SEC 6 ALONG N/S PVMT CENTER.**
- 1959 BATTERMAN VOL 4 PG 10 FD 1 1/2 PIPE AT N 1/4 COR. REFERENCED SAME. MAP SHOWS THE E/W RD CENTER LINE TO THE WEST IS NORTH OF THE E/W CENTER LINE OF THE RD TO THE EAST. CALLS FOR THE CORNER AS 24' NORTH OF CENTER OF PVMT & 69.5 EAST OF N/S CENTER OF PVMT. ANGLE 90-42 @ N 1/4 COR SEC 6 FROM NE COR TO CENTER PVMT. TO THE SOUTH. 2550.5X TO SET PIPE @ GEN OF SEC 6, 5192.7 TO S 1/4 COR SEC 6. DANE COUNTY TIE SHEE MAP #3572 & 3573 WITH HAND WRITTEN NOTE: RECORDED VOL 4 PG 10 CALLS FOR R/R @ S 1/4 COR SEC 31 & 1" LB @ N 1/4 COR SEC 1**
- 1963 ELY #12621 1" IRON STAKE. 69.88 EAST OF R/R SPIKE @ S 1/4 COR SEC 31. HAS TIES FOR BOTH CORNERS. 2637.98 TO NE COR SEC 6.**
- 1974 WEIR PLAT OF SURVEY #12611 FD PK OVER PIPE AT N 1/4 COR SEC 6. 69.88 EAST OF FD PK @ S 1/4 COR SEC 31.**
- 1974 WEIR PLAT OF SURVEY FOUND PK OVER PIPE AND SHOWS A DISTANCE OF 69.88 TO A PK AT THE SOUTH QUARTER CORNER OF SECTION 31.**
- 19?? DANE COUNTY SURVEYOR'S TIE SHEET. SHOWS A 1' IRON STAKE AND A R/R SPIKE AT THE SOUTH QUARTER CORNER OF SECTION 31.**
- 1988 BARNES VOL 6 PG 387 ANGLE 179-59-10 FROM NW TO NE CORNERS OF SEC 6, 801-56-51W 5186.17 TO S 1/4 COR SEC 6, 802-08-35W 2550.62 TO PIPE NEAR CENTER OF SEC 6.**
- 1988 BARNES A-3 FD A 1 1/2 PIPE. DROVE PIPE DEEP & PLACED A POLY MON ON TOP OF PIPE. FD 2 OF BATTERMAN 1959 REFERENCE MONUMENTS WHICH ARE IN HARMONY WITH THE FD PIPE. REFERENCED SAME. DUG 7X14X6' DEEP HOLE @ S 1/4 COR SEC 31 & FD NOTHING. PLACED PK/FLASHER @ S 1/4 COR SEC 31 & REFERENCED SAME. 889-55-05W 69.85 FROM N 1/4 COR SEC 6 TO S 1/4 COR SEC 31. POLY IS @ CENTER OF PVMT. S 1/4 COR SEC 31 IS ON N/S CENTER**

Dwold Barnes
6/11/2009

PO502 N1/4CORSEC6

LINE OF PVMT TO THE SOUTH, & 4' SOUTH OF NORTH PVMT EDGE.

- 1988 BARNES E-3 S1-56-51W 5186.16 TO N 1/4 COR SEC 6. FD PIPE 2550.61 8.69 WEST OF LINE BETWEEN N 1/4 COR & S 1/4 COR SEC 6.
- 1988 SCRHOEDER CSM VOL 13 PG 288 STATED NOTHING ABOUT MON. S00-54W 3629.60 TO POB FOR CSM, S88-49W TO THE NW COR SEC 6.
- 1988 BARNES @ S 1/4 COR SEC 31 FOUND A R/R SPIKE. @ S 1/4 COR SEC 31 DUG 6' DEEP X 13.5 N/S X 7' E/W AND FOUND NOTHING. DID NOT ACCEPT THE FOUND R/R SPIKE NOR DID I REJECT THE R/R SPIKE. THE SPIKE IS 0.14 SOUTH OF A LINE BETWEEN THE N 1/4 AND NW CORNERS OF SECTION 6. THE PRORATED DISTANCE IS 66.70 AND THE MEASURED DISTANCE IS 69.85. BLEEDORN'S MEASURED DISTANCE IS 73.59 TO A FOUND RED H.H. AT THE CORNER.
- 2000 LATHROP #7575 FD ALUM. MON.
- 2002 COMBS CSM 27 PG 66 FD ALUM MON 5186.17 TO FD SPIKE NAIL @ S 1/4 COR SEC 6.
- 2006 LATHROP CSM 30 PG 139 FD ALUM 5186.04 TO SET SPIKE @ S 1/4 COR SEC 6.
- 2006 LATRHOP CSM 31 PG 3 FD ALUM. 5186.05 TO SPIKE NAIL @ S 1/4 COR SEC 6
- 2007 RESOP S#15533 FD ALUM N89-08-54E 2636.16 TO FD ALUM @ NE COR SEC 6, S89-00-54W 69.85 TO FD R/R @ S 1/4 COR SEC 31 T5N R11E, S1-03-49W 2548.43 TO PIPE @ CENTER OF SEC 6, FROM SAID PIPE TO S 1/4 COR SEC 6 IS S01-03-49W 2637.58. RR @ S 1/4 COR SEC 31 IS IN CENTER OF 8TH 138.

FD POLY MON. WITH TOP BROKE OFF @ PVMT CENTER. IN HARMONY WITH FD REFERENCE MONUMENTS. THE HOUSE AND REFERENCE MONUMENTS IN YARD ARE GONE. AREA IS NOW BEING FARMED. THE 1959 BATTERMAN VOL 4 PG 10 RECORD IS PROBABLY CORRECT FOR CALLING THE N 1/4 COR SEC 6 AS 24' NORTH OF CENTER OF PVMT. THE 1950 AIR PHOTO SHOWS AT ABOUT 600 FEET EAST OF THE RD INTERSECTION THE ROAD TOOK A SHARP BEND TO THE SOUTH OF ABOUT 33' & THEN PROCEEDED WEST.

C) Was the corner restored through acceptance of (1) an obliterated evidence location, or, (2) a found perpetuated location?

IN 1988 I DUG LARGE HOLES AT THE N 1/4 COR & THE S 1/4 COR SEC 31 BUT DID NOT FIND BLEEDORN'S MONUMENTS. BY COMPARING THE 1950 AIR PHOTOS AND CURRENT EASTERN ROAD LOCATION IT IS APPARENT THAT THE EASTER ROAD LOCATION NEAR THE RD INTERSECTION HAS BEEN SUBSTANTIALLY RELOCATED TO THE NORTH.

ACCEPTED FD POLY MON. FOR THE N 1/4 COR SEC 6 BUT DID NOT ACCEPT NOR REJECT THE R/R SPIKE @ THE S 1/4 COR SEC 31. THE POLY MON IS 0.39 SOUTH OF A LINE BETWEEN THE NW & NE CORNERS OF SEC 6.

THE FD PIPE @ THE CENTER OF SEC 6 IS 8.7' WEST OF A LINE BETWEEN THE N 1/4 COR SEC 6 & THE S 1/4 COR SEC 6. THE DISTANCE FROM THE N/S 1/4 LINE TO THE E 1/4 COR SEC 6 IS 2640.5X WHICH IS CLOSER TO BLEEDORN'S DISTANCE OF 2641.98 THE DISTANCE OF 2550.62 TO FD PIPE NEAR GEN OF SEC 6 AND THE DISTANCE OF 2548.6 TO THE INT OF 1/4 LINES ARE BOTH CLOSE TO BLEEDORN'S DISTANCE OF 2552.88. THE 1988 EXCAVATION WAS PROBABLY WITHIN BLEEDORN'S POSITION.

Donald Barnes

6/11/2009

SHEET 3 OF 5
CORNER CODE A-3(1)

PO502 N1/4CORSEC6

THE REASON FOR THE DIFFERENCE IN JOB OF 73.59 (BLEEDORN) AND THE JOB OF 69.5X (SUNNY) IS PROBABLY BECAUSE SUNNY ACCEPTED THE CENTER OF THE N/S RD.

SUNNY - PRORATION (NORTH LINE SEC 6)

UNKNOWN = PLAT ORIG 2640 FROM NE TO N 1/4
TOTAL NW TO NE 5245.4X = TOTAL OF ORIG (5187.60+66.00)
[5253.6]

SOLUTION FOR UNKNOWN = 2635.8X FROM NE TO N 1/4 COR SEC 6
MATCHES SUNNY'S REC DISTANCE OF 2635.8X

BLEEDORN - PRORATION

UNKNOWN = PLAT ORIG 2640 FROM NE TO N 1/4
TOTAL NW TO NE 5250.96 = TOTAL OF ORIG (5187.60+66.00)
[5253.6]

SOLUTION FOR UNKNOWN = 2638.67 FROM N 1/4 TO NE COR SEC 6
THIS MATCHES BLEEDORN'S REC DIS 2638.68

BLEEDORN FD COR @ S 1/4 & MEASURED TO SE COR SEC 31
2646.27 + JOB 66.0 EQUALS S 1/4 COR TO NE COR SEC 6 2712.27
MINUS PRO OF 2638.67 EQUALS A JOB OF 73.60 WHICH MATCHES
BLEEDON'S REC JOB.

IT APPEARS THAT BLEEDORN AND SUNNY APPLIED THE SAME
METHOD IN DETERMINING THE DISTANCE FROM THE N 1/4 COR SEC 6
TO THE NE COR OF SEC 6 BUT THEIR JOB DIFFERENCE @ THE N 1/4
COR OF SEC 6 IS BECAUSE BLEEDORN FD THE S 1/4 COR SEC 31
AND SUNNY USED THE CENTER OF THE RD.

D) Describe any material discrepancy between the location of the corner as restored or reestablished and the location of that corner as previously restored or reestablished by distance and direction. Show the discrepancy on the plan view drawing under (a), above. Show the distances between the corner as previously restored or reestablished and (1) the corner as restored or reestablished, and (2) to at least 4 of the witness monuments shown on the drawing in (a), above.

(E) Was the corner reestablished through lost corner proportionate methods? If so, show the method, including the directions and distances to other public land survey corners used as evidence or used for proportioning the corner location.

I, **Donald Barnes**, hereby certify that the corner location as identified by the corner code index was determined by me under my direction and control and that this U.S. Public Land Survey Monument Record is correct and complete to the best of my knowledge and belief.

Seal
Donald Barnes
Emboss

SHEET 4 OF 5

6/11/2009

CORNER CODE

A-3(1)

A.E. 7.08 REQUIREMENT

STH 138

○ SET 1/2X24 REROD

● FD 3/4 PIPE

OBSERVATIONS SHEETS #502 & 908

TREE JUST CUT DOWN

EMBOSSED SEAL

Ronald Barnes
6/11/09

HOUSE IS GONE
FARM FIELD
AREA IS NOW

POLY IS 0.36 SOUTH
OF A LINE BETWEEN
THE NW & NE CORNERS
OF SEC 6

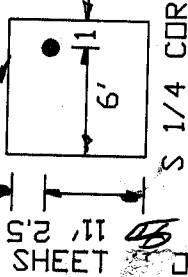
1959 BATTERMAN VOL 4 PG 10
1988 BARNES A-3

NEEDLE MILL RD

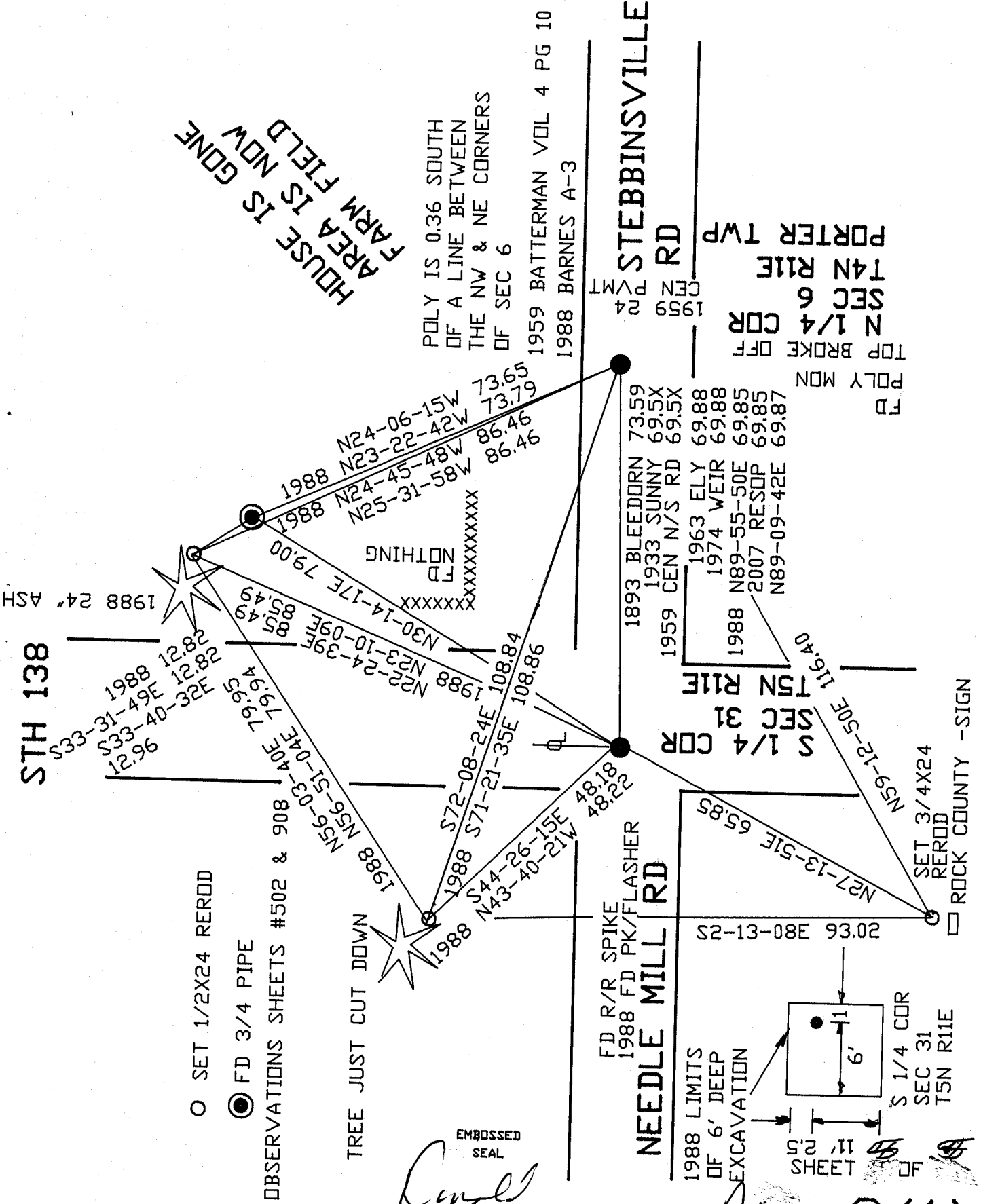
FD R/R SPIKE
1988 FD PK/FLASHER

NEEDLE MILL RD

1988 LIMITS
OF 6' DEEP
EXCAVATION



A - 3(1)



STEBBINSVILLE RD

CEN 24
1999

PORTER TWP
T4N R11E
SEC 6
N 1/4 COR

TOP BROKE OFF
FD
POLY MON

1893 BLEEDORN 73.59
1933 SUNNY 69.5X
1959 CEN N/S RD 69.5X
1963 ELY 69.88
1974 WEIR 69.88
1988 N89-55-50E 69.85
2007 RESOP 69.85
N89-09-42E 69.87

S 1/4 COR
SEC 31
T5N R11E

NS9-12-50E 116.40
SET 3/4X24
REROD
ROCK COUNTY - SIGN

N27-13-51E 65.85
20.66 38.08-31-25
93.02

1988 24' ASH
96.21
S33-31-49E 12.82
S33-40-32E 12.82
1988 24' ASH

1988 NS6-51-04E 79.94
N22-24-39E 85.49
N30-14-17E 79.00
N25-31-58W 86.46
N24-45-48W 86.46
N23-22-42W 73.79
N24-06-15W 73.65

NOTHING
FD
XXXXXXXXXXXX

1988 S72-08-24E 108.84
1988 S71-21-35E 108.86
1988 N44-26-15E 48.18
1988 N43-40-21W 48.22

1988 NS6-03-40E 79.94
NS6-51-04E 79.94