

Paper weight-110# (minimum)

Black nonfading ink required

U.S. PUBLIC LAND SURVEY MONUMENT RECORD

For Public Land Survey Corners In:

WI ADMINISTRATIVE CODE A-E 7.08 REQUIREMENT

T. 4 N. R. 11 E. 4th P.M.

REV 10/23/2004

USMONREC.DWG

CORNER CODE INDEX

PORTER TWP

ROCK COUNTY WI

IF AVAILABLE
ROCK COUNTY COORDINATES PREFERRED

1	2	3	4	5	6	7	8	9	10	11	12	13	14	15	16	17	18	19	20	21	22	23	24	25	
A	6					5								4											3
B																									2
C																									1
D																									
E																									
F																									
G																									
H																									
I																									
J																									
K																									
L																									
M																									
N																									
O																									
P																									
Q																									
R																									
S																									
T																									
U																									
V																									
W																									
X																									
Y																									
Z																									

North _____ Elev. _____

East _____

Hor. Datum _____ Vert. Datum _____

LATITUDE _____ ELLIPS. HT. _____

LONGITUDE _____

NAD83(91) _____ NETWORK ADJ. YR _____

GPS (X) _____ TRAVERSE (X) _____

BASED ON THE FOLLOWING CONTROL:

PLACE MONUMENT SYMBOL AT PROPER LOCATION ON ABOVE INDEX

CORNER MONUMENT

WITNESS MONUMENT

(a)

BEARINGS ARE BASED ON: _____

FIELD BOOK _____ PAGE # _____

SHEET 1 OF 3

SHOW A PLAN VIEW DRAWING DEPICTING THE CORNER MONUMENT AND SURROUNDING PHYSICAL FEATURES, INCLUDING THE EXCAVATION AREA AND DEPTH.

PLANNING & ZONING COMMITTEE ADOPTED THIS FORM ON 12/2/1982

CORNER CODE 7-3(1)

PO622 S1/4CORSEC31

(B) Describe any record evidence, monument evidence, occupational evidence, testimonial evidence or any other material evidence you considered, and whether the monument was found or placed.

1833 (SEP 15) MULLETT & BRINK T4N R11E 4TH MERIDIAN WEST
ON SOUTH SIDE SEC 31

2640.0 SET QUARTER SECTION POST IN PRAIRIE AND
MADE A MOUND.

5227.20 INTERSECTED RANGE LINE 118.80' SOUTH OF
TEMPORARY POST. SET POST AT
INTERSECTION CORNER TOWNSHIP 3 & 4
NORTH RANGES 10 & 11 EAST AND MADE A
MOUND 4 FEET SQUARE AT BASE AND 4 FEET
HIGH.

1833 ORIG GOV PLAT NW COR SEC 5 CENTER TWP IS 7.92' WEST
OF SW COR SEC 32 PORTER TWP.

1874 RUGER VOL 2 PG 165 & #3652 STATES NOTHING ABOUT
MON. ON LINE WITH S 1/4 COR SEC 32 & SW COR SEC 31,
VAR 7-25 2655.39 TO SW COR SEC 32, VAR 7-25 2602.16
TO STONE MON @ SW COR SEC 31

1876 RUGER VOL 2 PG 219 & #705@ N 1/4 COR SEC 6 CENTER
TWP DROVE STAKE VAR 6-10 TO S 1/4 COR SEC 6. USED TO
SUBDIVIDE SEC 6

1900 BROWN VOL 2 PG 520 & #6518 SET STAKE FOR N 1/4 COR
SEC 6 CENTER TWP. 2614.92 TO NW COR SEC 6 & 2642.64
TO NE COR SEC 6. USED TO SUBDIVIDE SEC 6.

1902 KERGH VOL 3 PG 15 SET GAS PIPE @ N 1/4 COR SEC 6,
2657.2 FROM N 1/4 COR SEC 6 TO NE COR SEC 6, 2596.1
FROM N 1/4 COR SEC 6 TO NW COR SEC 6.

1903 PORTER TWP RD REC BK 3 PG 13 BEGINNING ON THE NORTH
AND SOUTH QUARTER SECTION LINE RUNNING NORTH AND
SOUTH THROUGH SEC 31, T4N R11E, ROCK COUNTY AT A
POINT WHERE THE PUBLIC HIGHWAY NOW RUNNING NORTH
AND SOUTH THROUGH THE CENTER OF SECTION 7,
18,19,30, AND A PART OF 31 IN SAID T4 INTERSECTS THE
PUBLIC HIGHWAY RUNNING FROM EVANSVILLE TO
JANESVILLE AND KNOWN AS THE MADISON ROAD AND RUN
THENCE DUE SOUTH ALONG THE QUARTER SECT LINE
THROUGH SAID SEC 31 IN SAID T4 TO THE SOUTH LINE OF
SAID SEC 31 SAID PROPOSED HIGHWAY CROSSING LAND
OWNED BY W.B. VAN WART, D.C. & EDD GRIFFITH, JACOB
BENKERT, JACOB ELMEN AND THE CHICAGO &
NORTHWESTERN RAILWAY COM.

AFTERWARDS UPON APPEAL TAKEN BY FRANK MONTGOMERY
FROM THE DETERMINATION SO REFUSING TO LAY OUT SUCH
HIGHWAY AS AFORESAID, COMMISSIONERS WERE DULY
APPOINTED TO REVIEW THE SAID DETERMINATION AND SUCH
PROCEEDINGS WERE DULY HAD BEFORE THEM THAT THE
SAME WAS FINALLY REVERSED AS APPEARS BY THEIR
DECISION "*****" BEGINNING ON THE NORTH AND SOUTH
QUARTER SEC LINE RUNNING NORTH & SOUTH THROUGH
SEC 31, T4N R11E AT A POINT WHERE THE PUBLIC HIGHWAY
NOW RUNNING NORTH AND SOUTH THROUGH THE CENTER
OF SEC 7-18-19-30 AND A PART OF 31 IN SAID T4
INTERSECTS THE PUBLIC HIGHWAY RUNNING DUE SOUTH ON
QUARTER LINE TO WITHIN 165' OF LAND OWNED BY CHICAGO
& NORTHWESTERN RAILROAD CO. GROSSES SAID 1/4 LINE;
THENCE SOUTH EAST TO LAND OWNED BY CHICAGO &
NORTHWESTERN RAILROAD TO A POINT 164' EAST OF
RAILROAD BRIDGE NOW ON SAID QUARTER LINE; THENCE
SOUTH ACROSS LAND OWNED BY CHICAGO &
NORTHWESTERN RAILROAD CO. AS NEAR AS PRACTICABLE;
THENCE SOUTH WEST TO A POINT WHERE SAID QUARTER
LINE INTERSECTS THE SOUTH LINE OF SAID SEC 31 SAID

SHEET 1 OF 3

CORNER CODE Z-3(1)

3/25/2009
Donald James

PO622 S1/4CORSEC31

LINE IS THE CENTER OF SAID HIGHWAY AND THE SAME IS LAID OUT OF THE WIDTH OF 66'. E.M. STEBBINS TOWN CLERK.

1976 BARNES VOL 5 PG 181 SET 1 1/2X48 IRON PIPE IN LARGE IRRIGATION DITCH BEING 2' FT NORTH OF THE SOUTH EDGE, REFERENCED SAME. 2659.4 TO SE COR SEC 31

1976 COMBS CSM 6-99 STATES NOTHING ABOUT MON.

1980 BARNES VOL 6 PG 27 COORDINATES 277,388.6X;
2,204,091.1X

1983 SCHROEDER CSM 15-395 STATES NOTHING ABOUT MON.

1994 BARNES VOL 6 PG 440 S89-11-07W 2604.99 TO SW COR SEC 31.

1995 BARNES VOL 6 PG 441 N89-13-01E 7.92 FROM N 1/4 COR SEC 6. FD TIES @ N 1/4 COR SEC 6. N89-15-59E 2658.86 TO SE COR SEC 31, S89-13-01W 2604.99 TO FD TIES @ SW COR SEC 31.

1995 BARNES Z-3 DID NOT PLACE MON. REFERENCED SAME. IN DRAINAGE DITCH. S 1/4 COR SEC 31 IS 7.92 EAST OF N 1/4 COR SEC 6 CENTER TWP

1995 BARNES A-3 FOR THE N 1/4 COR SEC 6 I DID NOT PLACE MON. REFERENCED THE POSITION. FOR THE N 1/4 COR SEC 6 I ESTABLISHED CORNER PER ORIG PLAT DISTANCE JOG OF 7.92'. THIS IS IN HARMONY WITH KERCH'S DISTANCES AND BROWN'S DISTANCES IF ONE ASSUMES BROWN COMPUTED THE DISTANCE WITH THE JOG ON THE WRONG SIDE OF THE S 1/4 COR SEC 31.

I USED MY 1995 OBSERVATIONS. ALSO REOCCUPIED THE SW REFERENCE MONUMENT.


C) Was the corner restored through acceptance of (1) an obliterated evidence location, or, (2) a found perpetuated location?

ACCEPTED CORNER AS ESTABLISHED.

D) Describe any material discrepancy between the location of the corner as restored or reestablished and the location of that corner as previously restored or reestablished by distance and direction. Show the discrepancy on the plan view drawing under (a), above. Show the distances between the corner as previously restored or reestablished and (1) the corner as restored or reestablished, and (2) to at least 4 of the witness monuments shown on the drawing in (a), above.

(E) Was the corner reestablished through lost corner proportionate methods? If so, show the method, including the directions and distances to other public land survey corners used as evidence or used for proportioning the corner location.

I, **Donald Barnes**, hereby certify that the corner location as identified by the corner code index was determined by me under my direction and control and that this U.S. Public Land Survey Monument Record is correct and complete to the best of my knowledge and belief.

Seal

EMBOSS

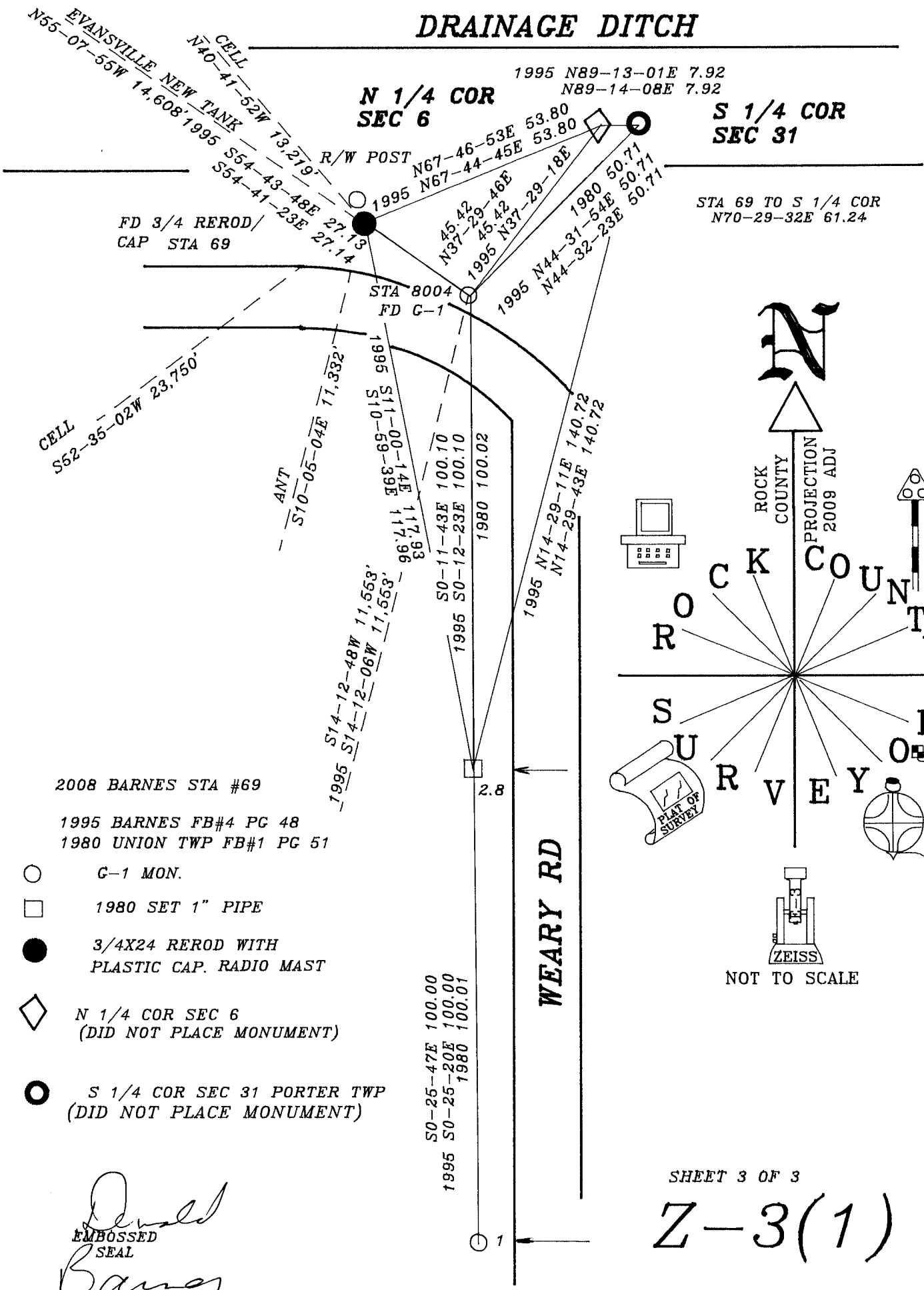
3/25/2009

SHEET 2 OF 3

CORNER CODE **Z-3(1)**

A.E. 7.08 REQUIREMENT

DRAINAGE DITCH



2008 BARNES STA #69

1995 BARNES FB#4 PG 48
 1980 UNION TWP FB#1 PG 51

- G-1 MON.
- 1980 SET 1" PIPE
- 3/4X24 REROD WITH PLASTIC CAP. RADIO MAST
- ◇ N 1/4 COR SEC 6 (DID NOT PLACE MONUMENT)
- S 1/4 COR SEC 31 PORTER TWP (DID NOT PLACE MONUMENT)

ROCK COUNTY
 PROJECTION
 2009 ADJ

ROCK COUNTY
 SURVEY

ZEISS

NOT TO SCALE

SHEET 3 OF 3

Z-3(1)

Donald Barnes
 EMBOSSED SEAL
 3-25-2009