

Paper weight-110# (minimum)

Black nonfading ink required

U.S. PUBLIC LAND SURVEY MONUMENT RECORD

For Public Land Survey Corners In:
T. 4 N. R. 11 E. 4th P.M.
CORNER CODE INDEX

WI ADMINISTRATIVE CODE A-E 7.08 REQUIREMENT
REV 10/23/2004 USMONREC.DWG

PORTER TWP
ROCK COUNTY WI

IF AVAILABLE
ROCK COUNTY COORDINATES PREFERRED

A	1	2	3	4	5	6	7	8	9	10	11	12	13	14	15	16	17	18	19	20	21	22	23	24	25	A
B		6			5			4		3			2		1											B
C																										C
D																										D
E																										E
F																										F
G																										G
H																										H
J																										J
K																										K
L																										L
M																										M
N																										N
O																										O
P																										P
Q																										Q
R																										R
S																										S
T																										T
U																										U
V																										V
W																										W
X																										X
Y																										Y
Z																										Z

North _____ Elev. _____

East _____

Hor. Datum _____ Vert. Datum _____

LATITUDE _____ ELLIPS. HT. _____

LONGITUDE _____

NAD83(91) _____ NETWORK ADJ. YR _____

GPS (X) _____ TRAVERSE (X) _____

BASED ON THE FOLLOWING CONTROL:

PLACE MONUMENT SYMBOL **◆** AT PROPER LOCATION ON ABOVE INDEX

◆ CORNER MONUMENT

○ WITNESS MONUMENT

BEARINGS ARE BASED ON: _____

FIELD BOOK _____ PAGE # _____

SHEET 1 OF 3

SHOW A PLAN VIEW DRAWING DEPICTING THE CORNER MONUMENT AND SURROUNDING PHYSICAL FEATURES, INCLUDING THE EXCAVATION AREA AND DEPTH.

PLANNING & ZONING COMMITTEE ADOPTED THIS FORM ON 12/2/1982

CORNER CODE T-9(1)

PO596

W1/4CORSEC28

(B) Describe any record evidence, monument evidence, occupational evidence, testimonial evidence or any other material evidence you considered, and whether the monument was found or placed.

- 1833 HARRISON (NOV 3RD) T4N R11E 4TH MER. NORTH
BET. 29 & 28
 - 2030.82 BURR OAK 12
 - 2640.0 QUARTER SEC COR. {BURR OAK 18 S36W 33.0'; BURR OAK 12 N27W 48.18' {BURR OAK 18; BURR OAK 12} MARKED
 - 4499.88 BURR OAK 18
 - 5280.0 COR TO SECS 20,21,28,29 {BURR OAK 12 S32E 31.68'; BURR OAK 10S33W 111.54'; BURR OAK 20 N36W 38.94; BURR OAK 12 N12E 68.64'
- LAND ? SAME
- 1864 PORTER TWP RD REC BK 2 PG 4 BEGINNING AT THE 1/4 POST ON THE EAST LINE OF SEC 29 T4N R11E THENCE SOUTH ON THE EAST LINE OF SAID SEC 29 AND ON THE EAST LINE OF SEC 32, 3960, TO A POINT 1320 SOUTH OF THE NE COR OF SAID SEC 32, SAID POINT BEING THE CENTER OF THE HIGHWAY LEADING PAST THE DWELLING OF L. WAIT IN A WESTERLY DIRECTION. THE WHOLE LENGTH OF THE ROAD IS 3/4 OF ONE MILE COURSE GIVEN ACCORDING TO THE TRUE MERIDIAN. VARIATION OF THE NEEDLE 8. THE LINE OF SAID SURVEY TO BE THE CENTER OF SAID HIGHWAY AND THE SAME IS ESTABLISHED 66 IN WIDTH.
- 1871 RUGER VOL 2 PG 68 FOUND REMAINS OF OLD STAKE AND WHERE STUMPS OF BTS HAD BEEN DUG UP. SET BURR OAK LOG 2 1/2' LONG 9" IN DIAMETER AND DROVE IRON ROD IN TOP OF LOG AND PUT HH STONES ON TOP OF LOG. CALLS FOR 2674.32 TO THE SW CORNER OF SECTION 28 AND 2661.78 TO THE CENTER OF SECTION 29.
- 1871 RUGER VOL 2 PG 69 CALLS FOR 2644.62' VAR 7-16 TO THE NE CORNER OF SECTION 29, 2674.32 VAR 7-00 TO THE SE CORNER OF SECTION 29, & 2672.18 TO THE CENTER OF SECTION 28.
- 1964 BATTERMAN JR. VOL 4 PG 3. FOUND 1" PIPE AND REFERENCED SAME.
- 1971 COMBS CSM 2-37 FD 1" PIPE S89-58-30E TO PIPE @ E 1/4 COR SEC 28, NORTH TO IP @ NW COR SEC 28
- 1979 BARNES VOL 5 PG 567 FOUND HH SURROUNDED BY 3 HARDHEADS AND 1 LIMESTONE. INSTALLED ALUMINUM MONUMENT ON TOP OF STONE. FOUND ERRENOUS IRON PIPE AS REFERENCED IN VOL 4 PG 3. ALUMINUM MONUMENT IS 12.00 TO THE NW. CALLS FOR 1331.96 TO THE S 1/6TH CORNER OF THE NE 1/4 OF SECTION 29.
- 1991 SCHROEDER CSM 15-177 STATED NOTHING ABOUT MON.
- 1992 SCHROEDER CSM 16-54 STATED NOTHING ABOUT MON.
- 1992 BARNES T-9 FOUND ALUMINUM MONUMENT AND 1" PIPE. ALUMINUM MONUMENT IS ON LINE WITH NORTH EDGE OF PAVEMENT THAT IS TO THE WEST AND 3.5 WEST OF THE N/S CENTER OF PAVEMENT. PIPE IS S59-40-16E 12.02 OF ALUM. MON. ACCEPTED FOUND ALUMINUM MONUMENT. SEE SKETCH FOR DISCREPANCY.
- 1992 BARNES VOL 6 PG 428 FD ALUM. MON. N00-52-50E 2643.53 TO NW COR SEC 28, S00-33-17W 2678.28 TO CI @ SW COR SEC 28, S89-15-12E 5349.07 TO FD ALUM @ E 1/4 COR SEC 28
- 1992 KARNS #10034 STATES NOTHING ABOUT MON. N89-53-15E ALONG E/W 1/4 LINE & NORTH ALONG SECTION LINE.
- 1993 SCHROEDER #9965 STATES NOTHING ABOUT MON. S89-15-12E TO CENTER OF SEC.
- 1995 KREBS #8805 FD ALUM MON. NORTH TO FD 1" PIPE @ NE COR SEC 29 THENCE S89-34-44W TO CI @ N 1/4 COR SEC 29

Donald Baine
3/17/2009

P0596

W1/4CORSEC28

2004 COMBS CSM VOL 27 PG 154 FD IP 5338.48 TO FD ALUM @ E
1/4 COR SEC 28
2008 COMBS CSM32-96 FD PIPE 5338.48 TO ALUM @ E 1/4 COR
SEC 28

FD ALUM. MON. 3.5' WEST OF N/S CENTER OF PVMT. & 0.1' SOUTH OF
NORTH PVMT. EDGE.

C) Was the corner restored through acceptance of (1) an obliterated evidence location, or, (2) a found perpetuated location?

ACCEPTED FD ALUM.

D) Describe any material discrepancy between the location of the corner as restored or reestablished and the location of that corner as previously restored or reestablished by distance and direction. Show the discrepancy on the plan view drawing under (a), above. Show the distances between the corner as previously restored or reestablished and (1) the corner as restored or reestablished, and (2) to at least 4 of the witness monuments shown on the drawing in (a), above.

THE 1964 BATTERMAN FOUND 1" PIPE IS S59-40-16E 12.02' OF THE ALUM. MON.

(E) Was the corner reestablished through lost corner proportionate methods? If so, show the method, including the directions and distances to other public land survey corners used as evidence or used for proportioning the corner location.

NO

I, **Donald Barnes**, hereby certify that the corner location as identified by the corner code index was determined by me under my direction and control and that this U.S. Public Land Survey Monument Record is correct and complete to the best of my knowledge and belief.

Seal


Emboss

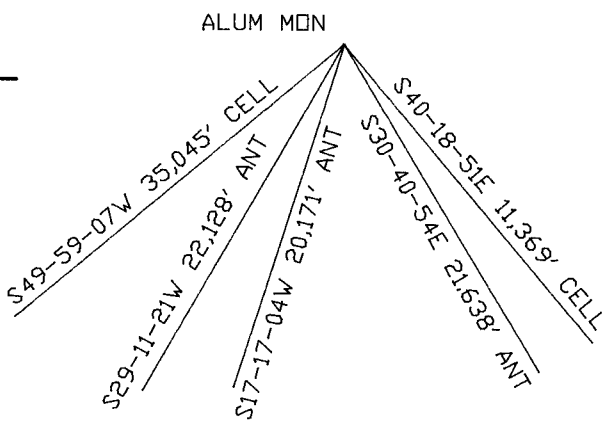
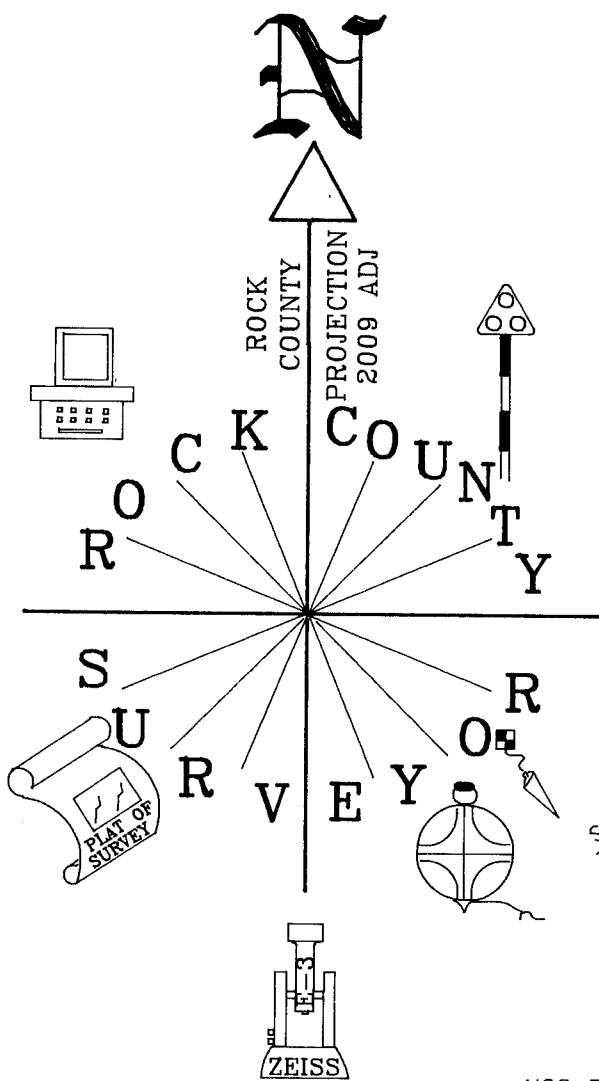
SHEET 2 OF 3

3/17/2009

CORNER CODE

T-9(1)

A.E. 7.08 REQUIREMENT

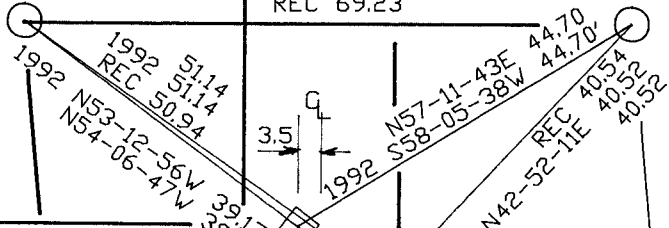


NOT TO SCALE

N88-57-49E 69.31
 1992 N89-51-37E 69.32
 REC 69.23

FD REROD
 1992 FD BENT PIPE
 REPLACED WITH 3/4"X24
 REROD WITH PLASTIC CAP

FOUND BENT PIPE



FD ALUM MON

GIBBS LAKE RD

FD 1" PIPE

E 1/4 COR
 SEC 29
 PORTER TWP
 T4N R11E

1992 N5-18-16W 81.27
 1992 N6-11-28W 81.27
 REC 81.14

1992 N21-39-35E 62.23
 1992 S22-32-22S 2667
 1992 S33-40-23W 61.95
 1992 N32-46-45E 61.77

RILEY RD

1992 N43-46-00E 43.94
 1992 N42-52-23W 43.94
 1992 N46-06-36W 61.55
 1992 N47-00-01W 61.55

1992 S6-25-07E 66.60
 1992 S5-31-16E 66.60

FD 3/4 REROD

1992 N77-45-48E 69.80
 1992 N76-51-57E 69.80

REC -1964 BATTERMAN VOL 4 PG 3
 1979 BARNES VOL 5 PG 567
 1992 BARNES T-9
 FB#3 PG 36

SHEET 3 OF 3

T-9(1)

Donald Barnes
 EMBOSSED SEAL
 3/17/2009