

U.S. PUBLIC LAND SURVEY MONUMENT RECORD

For Public Land Survey Corners in:

WI ADMINISTRATIVE CODE A-E 7.08 REQUIREMENT

T. 2N., R. 11E

CORNER CODE INDEX

A	1	2	3	4	5	6	7	8	9	10	11	12	13	14	15	16	17	18	19	20	21	22	23	24	25
B	6																								
C		5																							
D			4																						
E				3																					
F					2																				
G						1																			
H							8																		
I								9																	
J									10																
K										11															
L											12														
M												13													
N													14												
O														15											
P															16										
Q																17									
R																	18								
S																		19							
T																			20						
U																				21					
V																					22				
W																						23			
X																							24		
Y																								25	
Z																									26

PLYMOUTH TWP

ROCK COUNTY WI

IF AVAILABLE
ROCK COUNTY COORDINATES PREFERRED

North _____ Elev. _____

East _____

Hor. Datum _____ Vert. Datum _____

LATITUDE _____ ELLIPS. HT. _____

LONGITUDE _____

GPS (X) _____ TRAVERSE (X) _____

BASED ON THE FOLLOWING CONTROL:

PLACE MONUMENT SYMBOL AT PROPER LOCATION ON ABOVE INDEX

CORNER MONUMENT

WITNESS MONUMENT

(a)

BEARINGS ARE BASED ON:

OBSERVATION SHEET 490

FIELD BOOK _____ PAGE # _____

SHEET 1 OF 4

SHOW A PLAN VIEW DRAWING DEPICTING THE CORNER MONUMENT AND SURROUNDING PHYSICAL FEATURES, INCLUDING THE EXCAVATION AREA AND DEPTH.

PLANNING & ZONING COMMITTEE ADOPTED THE ABOVE FORM ON 12/2/1982

CORNER CODE V-9(3)

PL605

(B) Describe any record evidence, monument evidence, occupational evidence, testimonial evidence or any other material evidence you considered, and whether the monument was found or placed.

- 1833 HARRISON NORTH BETWEEN SEC 32 & 33 (T2NR11E)
- 1320 ROAD CRS N.W.
- 2640 QUARTER SEC COR IN PRAIRIE ON GROUND DESCENDING S.E. SET POST & RAISED MOUND.
- 5280 COR TO SECS 28,29,32,33 IN A RAVINE CRS S.E. SET A POST & RAISED MOUND. LAND HIGH ? 1ST RATE PRAIRIE. GROWTH GRASS & WEEDS
EAST ON RAND. BET 28 & 33
- 2640 TEMPY 1/4 P 3993 LEFT PRAIRIE & ENTER TIM.
- 5296.5 INT. E. BDY 18.48' N OF P
COR. WEST
- 2648.25 QUARTER SEC COR. {SET POST & RAISED MOUND
- 5296.5 INT. SEC COR
NORTH BET 28 & 29
- 2640 QUARTER SEC COR. IN RAVINE DESCENDING ?. SET POST & RAISED MOUND
- 5280 SET COR TO SECS 20 21 28 29 ON GROUND DISCENDING SE SET POST & RAISED MOUND. LAND HIGH ROLLING PRAIRIE 1ST RATE GROWTH ?? & INDIGO & PRAIRIE GRASS.
EAST ON RAND. BET 29 & 32
- 2640 TEMPY 1/4 P
- 2838 LEFT TIMBER & ENTERED PRAIRIE
- 5285.94 INT. E BDY 6.6' S OF P LAND WEST 1/2 ROLLING 2ND RATE WITH RED & W.O TIMBER E 1/2 ? 1ST RATE PRAIRIE
COR. WEST
- 2642.97 QUARTER SEC COR. {BLK O 24 N26E 27.06' BLK O. 12 S23E 26.4' BLK O 24 BLK O 12} MARKED
- 5285.94 SEC COR
- 1844 PEASE TWP RD RECORDS BK 1 PG 4 COMMENCING AT THE CORNERS OF SEC 26,27,34 AND 35, IN T2N R11E AND RUNNING WEST ON THE LINE BETWEEN SECTIONS 27 & 34, 2622.84'. SET POST WHERE OLD 1/4 POST ON SAID LINE STOOD BURNT STUMP OF WHITE OAK BEARS NSW 13.86' AND S88E 73.92'; THENCE WEST ON SAID LINE 2622.84' TO THE CORNER OF SEC 27,28,33, & 34, SET POST WHITE OAK 24 INCHES IN DIA BEARS S35E 114.18', BURNT STUMP OF BASS WOOD 24" N78E 86.46'; THENCE WEST ON LINE BETWEEN SECS 28 AND 33 TO CORNER OF SEC 28,29,32 & 33 5224.5' SETTING POST IN OLD MOUND; THENCE WEST ON LINE BETWEEN SECTIONS 29 & 32, 2652.8' SET POST BY BLACK OAK 24 INCH BEARS N26E 27.06'; THENCE WEST ON THE LINE BEFORE SAID 2642.64' TO THE COR OF SEC 29,30,31 & 32, BLACK OAK BEARS N41E 78? AND N22W 97.02'; THENCE WEST OF LINE BETWEEN SEC 30 & 31, 5297.16' TO THE LINE BETWEEN RANGES 10 & 11 EAST 4 MILES AND 5.94'. SAID RD EXTENDS 33' ON EACH SIDE OF THE ABOVE LINE.
- 1855 CHURCH VOL 1 PG 38 COMPASS N & S. 2664.75 TO S 1/4 COR SEC 28 & 2658.98 TO W 1/4 COR SEC 28. STONE 24" LONG 8" WIDE 4" THICK. SCHOOL HOUSE S6 1/2E 157.74', SE CORNER OF JAKE FISHER'S HOUSE N47 3/4W 99.66'
- 1868 LOCKE REMONUMENTATION NOTES.
PG 18 WEST BETWEEN SECS 28 & 33 VAR 6
- 143.22 BROOK BRIDGE 6.6' WIDE
- 2671.02 INTERSECTED 1/4 LINE AT STONE SET BY CHURCH CENTER OF ROAD. (SEE CO. SURVEYORS RECORD SEC 28). CONTINUED WEST WITH VAR 6-10 54.10 CENTER SLUICE BRIDGE 3.3' WIDE.

SHEET 1 OF 4 CORNER CODE V-9(3)

Donald Baines

3-07-03

- 5342.04 INTERSECTED WEST BOUNDARY AT STONE SET BY CHURCH. (SEE CO. SURVEYORS RECORD) JAKE FISHER, T IMYLIE AND SEVERAL OTHER NEIGHBORS UNITE IN DECLARING THAT THE OLD CORNERS IN SEC 28 HAD BEEN KEPT UP & THAT THESE STONES SET BY CHURCH WERE SET WHERE THE OLD CORNERS WERE. COR 34 22.77' SOUTH AND 1.32' EAST OF CORNER OF J. FISHERS FENCES IN NORTH & WEST SIDES OF HIGHWAYS.
PG 19 NORTH BETWEEN SECS 28 AND 29 VAR 7-30
SET OFF 23.43' EAST
- 2668.05 INTERSECTED 1/4 LINE 22.77' EAST OF COR. FOUND STONE SET BY CHURCH (SEE PAGE 18) ALSO CO. SURVEYORS RECORD SEC 28) COR IN CENTER OF HIGHWAY RUNNING NORTH & ON WEST LINE OF HIGHWAY RUNNING SOUTH AND IN LINE WITH FENCES RUNNING E & W. VAR CORRECTED 7-29
CONTINUED NORTH WITH VAR 7-15
- 5297.16 INTERSECTED NORTH BOUNDARY .66' WEST OF COR. FOUND STONE SET BY CHURCH. (SEE CO. SURVEYORS RECORD SEC 28 ALSO PAGE 18 HEREOF) VAR CORRECTED 7-14.
PG 61 WEST BETWEEN SEC 29 AND 32 VAR 6-05 PG 61
- 2659.8 INTERSECTED 1/4 LINE 4.62' SOUTH OF COR. FOUND REMAINS OF NORTH BT AND LIMESTONE ABOVE OLD STAKE IN CENTER OF HIGHWAY AND IN LINE OF FENCE RUNNING NORTH VAR CORRECTED 6.
CONTINUED WEST FROM 1/4 COR WITH VAR 6
- 2904 SET OFF 7.92' NORTH
- 3379.2 CENTER OF SLUICE BRIDGE
- 4026 SET OFF 6.27' NORTH
- 5016 SET OFF 8.58' NORTH
- 5314.98 INTERSECTED WEST BOUNDARY AT COR. FOUND B.T.S IN SEC 31 AND 32 AND STUMP OF BT IN 29 AND STONE ON COR. COR IN CENTER OF HIGHWAY. VAR CORRECTED 5-30
SEP 9 1868
PG 68 SOUTH BETWEEN SEC 32 & 33 VAR 7-15 PG 68
- 0.00 SET OFF 10.89' EAST
- 2661.12 INTERSECTED 1/4 LINE 10.89' EAST OF COR., FOUND MOUND AT JUNCTION OF FENCES ON WEST SIDE OF HIGHWAY AND ON LINE OF E & W FENCES. VAR CORRECTED 7-15.
CONTINUED SOUTH FROM 1/4 COR WITH VAR 7-15.
- 5320.59 INTERSECTED SOUTH BOUNDARY 3.96' EAST OF COR. FOUND LARGE LIMESTONE ON COR & UNDERNEATH INDICATIONS OF STAKE. COR IN CENTER OF E & W HIGHWAY AND NEARLY ON LINE OF FENCES ON WEST SIDE OF HIGHWAY RUNNING NORTH. VAR CORRECTED 7-10.
SEPT 11 1868
- 1871 RUGER VOL 2 PG 75 STONE MON 2655.84 TO W 1/4 COR SEC 33, 2667.22 TO N 1/4 COR SEC 33
- 1875 RUGER VOL 2 PG 193 CALLS FOR STONE MON.
- 1978 BARNES VOL 5 PG 473 N88-43-35W 2661.77 TO N 1/4 COR SEC 32, S88-56-51E 2670.13 TO N 1/4 COR SEC 33, S0-04-49W 2662.40 TO W 1/4 COR SEC 33, & N0-09-37E 2672.16 TO E 1/4 COR SEC 29.

SHEET 2 OF 4 CORNER CODE V-9(3)

Donald Barnes
3-7-03

PL605

1978 THOM CSM VOL 8 PG 131 C.I.

1979 BARNES VOL 6 PG 372 DUG 4' X 4' X 7' DEEP HOLE 2' DEEP FOUND CONCRETE ROAD, 4 DEEP FOUND STONE ROAD BED, 6' DEEP FOUND 1" X 1" X 3" WOOD HUB.

1979 BARNES VOL 5 PG 482 SET ALUM MON & REFERENCED SAME.

1981 COMBS CSM VOL 10 PG 285 ALUM S89-07E ALONG SEC LINE TO S 1/4 COR SEC 28 & NO-02-30W ALONG SEC LINE TO W 1/4 COR SEC 28

1984 WIDOT MAP # 7038 PROJ #5571-10-12 ALUM MON 219,514.18; 2,213,138.20; SO-56-10E 2662.40 TO ALUM AT E 1/4 COR SEC 32, N1-01-03W 2672.16 TO ALUM MON AT E 1/4 COR SEC 29 MAP #07038

1984 DOT V-9 & V-9(1) DOT REFERENCED CORNER

1992 COMBS CSM VOL 16-157 PK 2670.10 TO PK @ S 1/4 COR SEC 28

1997 SCHOEDER CSM VOL 20 PG 212 STATES NOTHING ABOUT MON

1998 BARNES V-9(2) WIDOT NOTIFIED ME THAT STH 213 WILL BE RESURFACED AND THE PROJECT WILL START IN APRIL. FOUND PK. NEED TO BORE WITH SIGN TRUCK TO FIND ALUM. MON. MON IS ABOUT 5 TO 7' DEEP. SHOW DOT DISTANCES & MY MEASURED DISTANCES TO FD PK & RECORD DISTANCES TO OLD NW & NORTH REFERENCE PIPES.

2000 LATHROP CSM VOL 12 PG 87 C.I.

USED MY OLD OBSERVATIONS & ALSO TIED INTO EXISTING REFERENCE MONUMENTS.

C) Was the corner restored through acceptance of (1) an obliterated evidence location, or, (2) a found perpetuated location?

ACCEPTED ALUM. MON. AS PERPETUATING THE WOOD HUB, WHICH IS IN HARMONY WITH LOCKE'S MEASUREMENTS.

D) Describe any material discrepancy between the location of the corner as restored or reestablished and the location of that corner as previously restored or reestablished by distance and direction. Show the discrepancy on the plan view drawing under (a), above. Show the distances between the corner as previously restored or reestablished and (1) the corner as restored or reestablished, and (2) to at least 4 of the witness monuments shown on the drawing in (a), above.

(E) Was the corner reestablished through lost corner proportionate methods? If so, show the method, including the directions and distances to other public land survey corners used as evidence or used for proportioning the corner location.

I, DONALD BARNES, HEREBY CERTIFY THAT THE CORNER LOCATION AS IDENTIFIED BY THE CORNER CODE INDEX WAS DETERMINED BY ME UNDER MY DIRECTION AND CONTROL AND THAT THIS U.S. PUBLIC LAND SURVEY MONUMENT RECORD IS CORRECT AND COMPLETE TO THE BEST OF MY KNOWLEDGE AND BELIEF.

SEAL

Donald Barnes

SHEET 3 OF 4

EMBOSS

3-7-03

CORNER CODE V-9(3)

A-E 7.08 REQUIREMENT

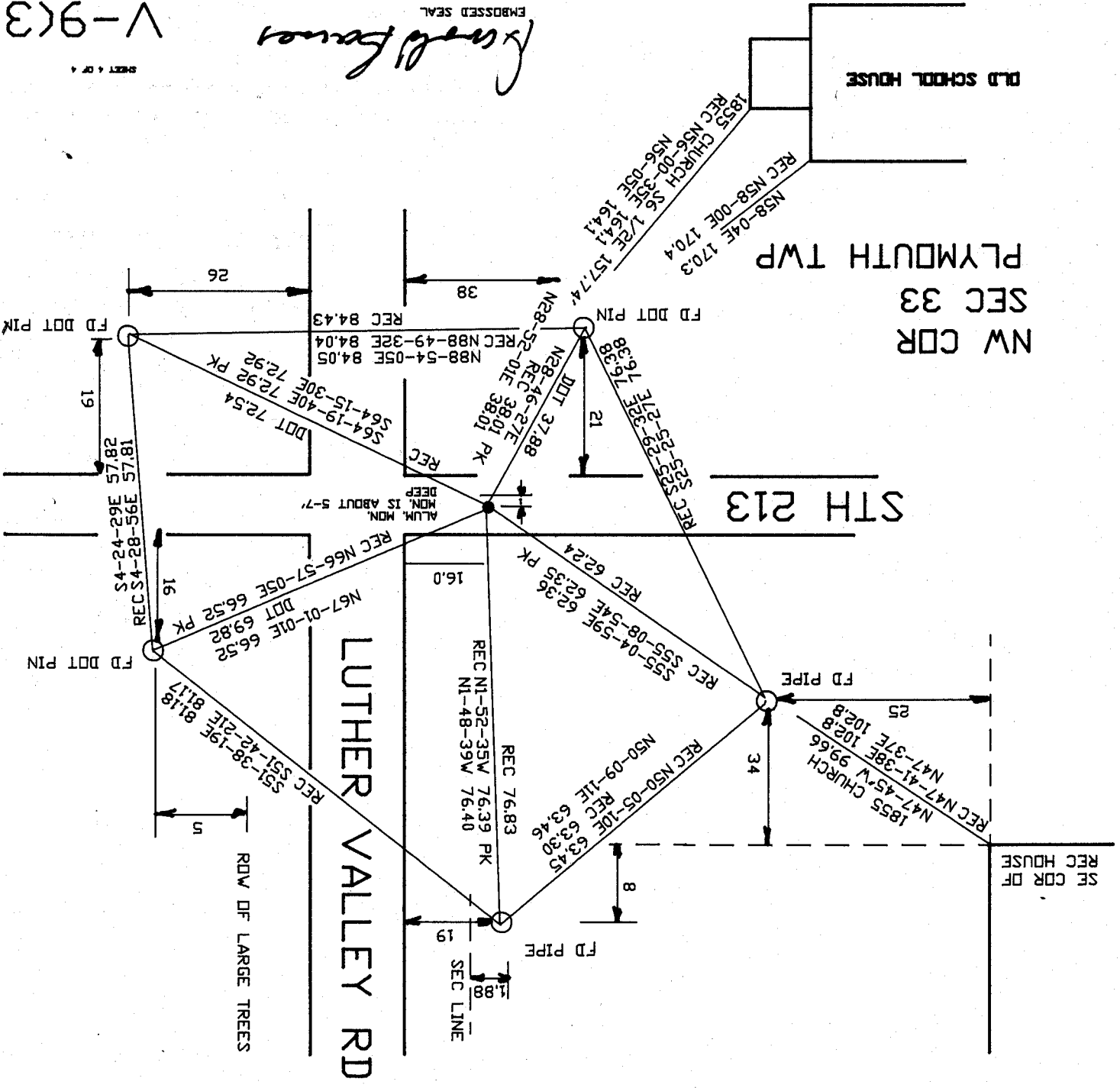
V-9(3)

SHEET 4 OF 4

3-07-03

EMBOSSED SEAL

James J. ...



OBSERVATION SHEET 170,171,175,490

