

Paper weight-110# (minimum)

Black nonfading ink required

# U.S. PUBLIC LAND SURVEY MONUMENT RECORD

For Public Land Survey Corners In:

WI ADMINISTRATIVE CODE A-E 7.08 REQUIREMENT

T. 2N. R. 14E. 4th P.M.

REV 10/23/2004

USMONREC.DWG

CORNER CODE INDEX

BRADFORD TWP

ROCK COUNTY WI

IF AVAILABLE

ROCK COUNTY COORDINATES PREFERRED

A	1	2	3	4	5	6	7	8	9	10	11	12	13	14	15	16	17	18	19	20	21	22	23	24	25	A	
B																										B	
C	6						5											4								C	
D																											D
E																											E
F																											F
G	7						8																				G
H																											H
I																											I
J																											J
K																											K
L	18						17																				L
M																											M
N																											N
O																											O
P	19						20																				P
Q																											Q
R																											R
S																											S
T	30						29																				T
U																											U
V																											V
W																											W
X	31						32																				X
Y																											Y
Z																											Z

North \_\_\_\_\_ Elev. \_\_\_\_\_

East \_\_\_\_\_

Hor. Datum \_\_\_\_\_ Vert. Datum \_\_\_\_\_

LATITUDE \_\_\_\_\_ ELLIPS. HT. \_\_\_\_\_

LONGITUDE \_\_\_\_\_

NAD83(91) \_\_\_\_\_ NETWORK ADJ. YR \_\_\_\_\_

GPS (X) \_\_\_\_\_ TRAVERSE (X) \_\_\_\_\_

BASED ON THE FOLLOWING CONTROL:

PLACE MONUMENT SYMBOL  AT PROPER LOCATION ON ABOVE INDEX

CORNER MONUMENT

WITNESS MONUMENT

(a)

BEARINGS ARE BASED ON: -----

FIELD BOOK \_\_\_\_\_ PAGE # \_\_\_\_\_

SHEET 1 OF 2

SHOW A PLAN VIEW DRAWING DEPICTING THE CORNER MONUMENT AND SURROUNDING PHYSICAL FEATURES, INCLUDING THE EXCAVATION AREA AND DEPTH.

PLANNING & ZONING COMMITTEE ADOPTED THIS FORM ON 12/2/1982

CORNER CODE E-21(3)

BR531 SECORSEC2

(B) Describe any record evidence, monument evidence, occupational evidence, testimonial evidence or any other material evidence you considered, and whether the monument was found or placed.

- 1905 RUGER VOL 5 PG 321 2645.94 TO E 1/4 COR SEC 2,  
2645.94 TO E 1/4 COR SEC 11
- 1905 RUGER VOL 5 PG 321 FD OLD STAKE SURROUNDED BY LOTS  
OF SMALL LIME AND HARD STONES. THE CORNER IS AT THE  
INTERSECTION OF THE E/W & N/S RD. 2645.94 TO E 1/4 COR  
SEC 2.
- 1980 BARNES VOL 6 PG 31 2647.64 TO E 1/4 COR SEC 11,  
2642.90 TO E 1/4 COR SEC 2, 2647.94 TO S 1/4 COR SEC 1,  
2644.50 TO S 1/4 COR SEC 2.
- 1980 BARNES VOL 6 PG 36 DUG 3" DEEP & FOUND NOTHING. SET  
1" IRON PIPE AT OCCUPATION LINES. THIS IN HARMONY WITH  
RUGER'S NOTES DATED MARCH 30, 1861, AND THE ORIG  
GOV. NOTES. SOILS & TERRAIN INDICATE A ROAD CUT.  
SOUTH HOLE LIMIT IS 2 SOUTH PVMT CENTER, NORTH HOLE  
LIMIT IS 2 NORTH OF PVMT CENTER, WEST HOLE LIMIT IS 2  
WEST OF N/S FENCE, & EAST HOLE LIMIT IS 4.5 EAST OF N/S  
FENCE LINE.
- 1980 WIDOT VOL 6 PG 45 STATE HWY DEPT. REVISED COORDINATES  
FOR CONTROL STATIONS. THE FOLLOWING ARE REVISED  
COORDINATES FOR SEC CORNERS. 240,397.04;  
2,323,846.96
- 1980 WIDOT E-21 SET TIES. (G-1 DISKS)
- 1982 BARNES E-21(1) FD 1" IRON PIPE. DROVE DEEP & SET POLY  
MON. ON TOP OF PIPE. FD WIDOT REFERENCE MON.
- 1982 BARNES TWP PROJ. N87-50W 2644.5X TO S 1/4 COR SEC 2,  
S88-23E 2648.0X TO S 1/4 COR SEC 1, S044E 2647.7X TO E  
1/4 COR SEC 11, N0-10W 2642.9X TO E 1/4 COR SEC 2
- 1986 SCHROEDER GSM VOL 12 PG 497 FD ALUM MON @ S 1/4 COR  
SEC 1 & SW COR SEC 1. SURVEY POB IS WEST 661.98 FROM  
S 1/4 COR SEC 1
- 1994 WIDOT E-21(2) CALLS FOR ALUM. NAD83(91) 240,404.84;  
2,292,309.29 CONVERT 258,415.95; 554,224.85
- 1994 WOOD VOL 6 PG 438 N88-37-08W 2644.43 TO S 1/4 COR SEC  
2, N0-56-31W 2642.76 TO E 1/4 COR SEC 2, S1-31-17E  
2647.59 TO W 1/4 COR SEC 12, S89-10-26E 2648.05 TO  
N1/4 COR SEC 12, & 5296.02 TO NE COR SEC 12

CONTACTED AFTER PVMT WAS MILLED. FD POLY WITH TOP MILLED  
OFF. PLACED 2 MAGNETS ON TOP OF POLY, WHICH WAS PAVED  
OVER. INSTALLED STEEL SURVEY MONUMENT SPIKE AFTER FINAL  
MATT WAS INSTALLED. STEEL SURVEY SPIKE IS 3" LONG, 3/8"  
DIAMETER, & TOP IS 1" IN DIAMETER AND STAMPED "SURVEY  
MARKER". SUB-BASE MONUMENT IS STILL IN. SPIKE IS 0.3' SOUTH  
OF CENTER OF PVMT & ON LINE WITH N/S PVMT TO THE SOUTH.

C) Was the corner restored through acceptance of (1) an obliterated evidence location, or, (2) a found perpetuated location?

ACCEPTED FD POLY

D) Describe any material discrepancy between the location of the corner as restored or reestablished and the location of that corner as previously restored or reestablished by distance and direction. Show the discrepancy on the plan view drawing under (a), above. Show the distances between the corner as previously restored or reestablished and (1) the corner as restored or reestablished, and (2) to at least 4 of the witness monuments shown on the drawing in (a), above.

NONE

I, **Donald Barnes**, hereby certify that the corner location as identified by the corner code index was determined by me under my direction and control and that this U.S. Public Land Survey Monument Record is correct and complete to the best of my knowledge and belief.

Seal

SHEET 1 OF 2

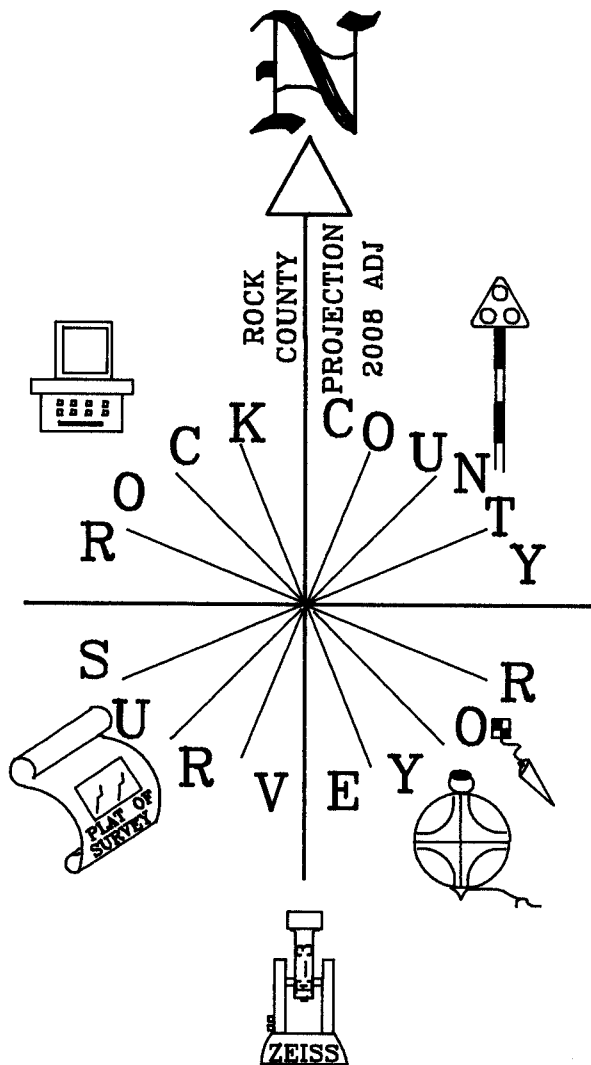
Emboss

9/22/08

Donald Barnes

CORNER CODE **E-21(3)**

A.E. 7.08 REQUIREMENT



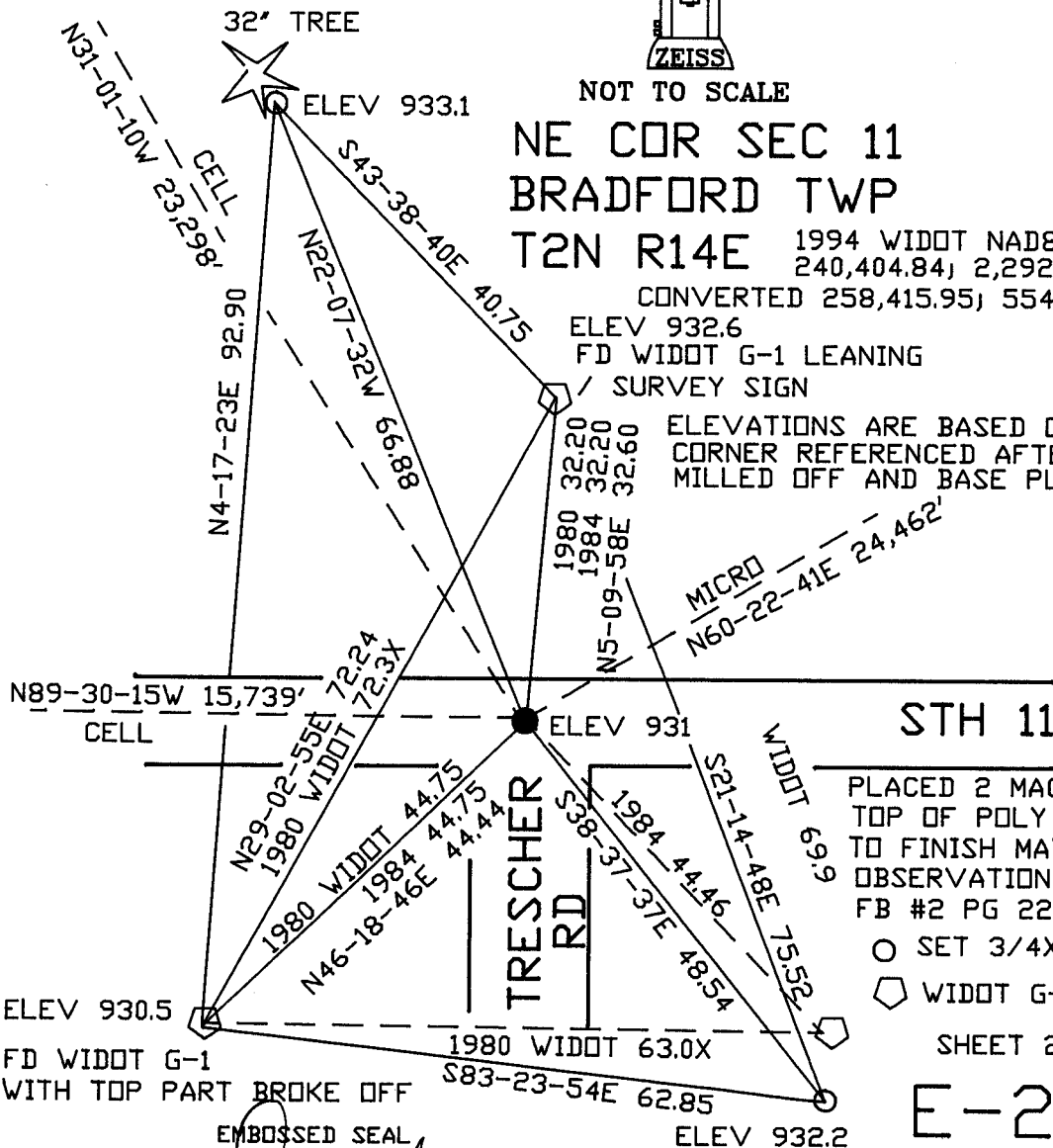
NOT TO SCALE

**NE COR SEC 11  
BRADFORD TWP  
T2N R14E**

1994 WIDOT NAD83(91)  
240,404.84; 2,292,309.29  
CONVERTED 258,415.95; 554,224.85

ELEV 932.6  
FD WIDOT G-1 LEANING  
SURVEY SIGN

ELEVATIONS ARE BASED ON PHOTOS  
CORNER REFERENCED AFTER TOP WAS  
MILLED OFF AND BASE PLACED.



**STH 11**

PLACED 2 MAGNETS ON  
TOP OF POLY PRIOR  
TO FINISH MATT  
OBSERVATION SHEET #531  
FB #2 PG 22

- SET 3/4X24 REROD
- ◊ WIDOT G-1 MON

SHEET 2 OF 2

**E-21(3)**

EMBOSSSED SEAL

*Ronald 9/22/08  
Lanes*