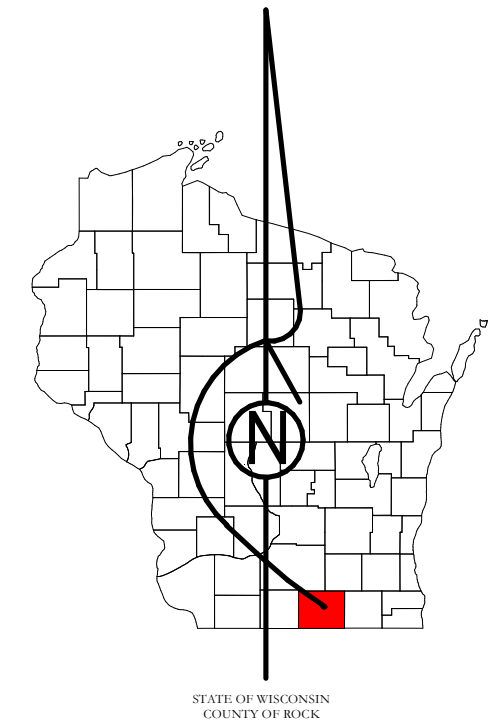


Property Division Map

City
of
Edgerton

T. 4 N. - R. 12 E.
Section 03 NENE



STATE OF WISCONSIN
COUNTY OF ROCK

PREPARED BY

REAL PROPERTY DESCRIPTION
DEPARTMENT

USING

ROCK COUNTY
GEOGRAPHIC INFORMATION SYSTEM

DUPLICATION OF THIS MAP PROHIBITED
WITHOUT THE WRITTEN CONSENT OF THE
REAL PROPERTY DESCRIPTION DEPARTMENT.

THIS MAP WAS PREPARED PURSUANT
TO SECTION 70.09 WIS. STATS.
USING PUBLIC RECORDS. IT IS NOT INTENDED
TO BE A SUBSTITUTE FOR AN
ACTUAL FIELD SURVEY
AND IS ADVISORY ONLY.

DISTANCES SHOWN ON THIS
MAP WERE PRODUCED BY
THE GIS SYSTEM AND ARE
FOR REFERENCE ONLY.
SEE DOCUMENT OF RECORD
FOR ACTUAL DISTANCE.

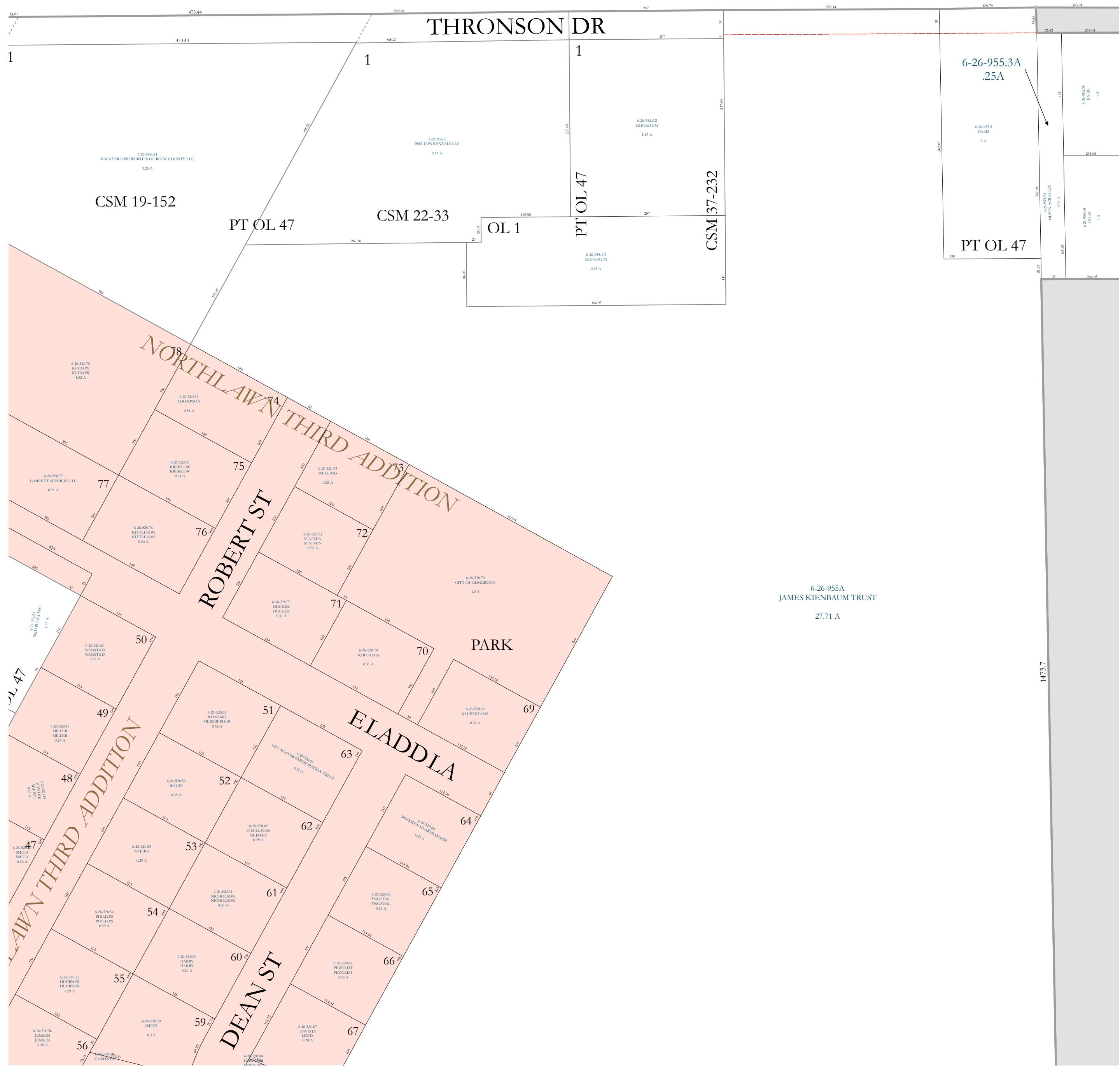


- Gap
- Overlap
- Town of Fulton
- CSM
- CSMHYDRO
- CSMLOT
- CSMLOTHYDRO
- MFL
- dam
- easement
- hydro
- lots
- parcels
- parcelhydro
- roadrv

See Pages

January 1, 2022

03 NENE



03 NENE

Town of Fulton

03 SENE