

ROCK COUNTY, WISCONSIN

**NOTE: This is also a Teleconference**



**DEPARTMENT OF PUBLIC WORKS/HIGHWAY COMMITTEE  
TUESDAY – JUNE 23, 2020 – 8:00 A.M.  
CALL: 1-312-626-6799  
MEETING ID: 978 256 6678**

Join Zoom Meeting

Join Zoom Meeting

<https://us02web.zoom.us/j/9782566678>

Meeting ID: 978 256 6678

One tap mobile

+19292056099, 9782566678# US (New York)

+13017158592, 9782566678# US (Germantown)

Dial by your location

+1 929 205 6099 US (New York)

+1 301 715 8592 US (Germantown)

+1 312 626 6799 US (Chicago)

+1 669 900 6833 US (San Jose)

+1 253 215 8782 US (Tacoma)

+1 346 248 7799 US (Houston)

Meeting ID: 978 256 6678

Find your local number: <https://us02web.zoom.us/u/kQ9LddwyJ>

Join by Skype for Business

<https://us02web.zoom.us/skype/9782566678>

**If you are interested in providing public comments on items on this agenda, you must submit your comments by noon on Monday, June 22, 2020. To submit a public comment use the following email:**

[amy.sather@co.rock.wi.us](mailto:amy.sather@co.rock.wi.us)

**Join from a telephone:**

- On your phone, dial the phone number provided above
- Enter the meeting ID number when prompted, using your dial-pad.
- Please note that long-distance charges may apply. This is not a toll-free number.
- Supervisors: Please identify yourself by name
- **Please mute your phone when you are not speaking to minimize background noises**
- We are new at holding meetings this way, so please be patient

Instructions for the hearing impaired –

<https://support.zoom.us/hc/en-us/articles/207279736-Getting-started-with-closed-captioning>



---

# ROCK COUNTY DEPARTMENT OF PUBLIC WORKS

## *Highways & Parks*

3715 Newville Road, Janesville, WI 53545  
Phone: (608)757-5450 Fax: (608)757-5470  
[www.co.rock.wi.us](http://www.co.rock.wi.us)

---

Public Works Committee Meeting – Highway  
Tuesday, June 23, 2020 – 8:00 a.m.  
Public Works Department – Committee Room  
3715 Newville Road  
Janesville, WI 53545

### **AGENDA**

1. Call to Order
2. Approval of Agenda
3. Approval of Minutes from May 28, 2020
4. Citizen Participation, Communications and Announcements
5. **HIGHWAY BUSINESS**
  - a. Discussion and Possible Action – Three-Party Design Contract, CTH E Bridge
  - b. Discussion and Possible Action – License Agreement – Milton Request to Erect “Welcome” Sign
  - c. Discussion and Possible Action – Issue Paper – Authorize Purchase of One (1) Side Mount Mower
  - d. Update and Discussion - WISDOT Project Update (To Be Provided at Meeting)
  - e. Discussion – Speed Zone Ordinance Update
  - f. Discussion – Semi-Annual Report on Attendance at Conferences/Conventions
  - g. Review of Payments
6. Next Highway Meeting Date: Tuesday, July 28, 2020 at 8:00 a.m. at Department of Public Works
7. Adjournment

The County of Rock will provide reasonable accommodations to people with disabilities. Please contact us at 608-757-5510 or e-mail [countyadmin@co.rock.wi.us](mailto:countyadmin@co.rock.wi.us) at least 48 hours prior to a public meeting to discuss any accommodations that may be necessary.



# ROCK COUNTY DEPARTMENT OF PUBLIC WORKS

## *Highways & Parks*

3715 Newville Road, Janesville, WI 53545  
Phone: (608)757-5450 Fax: (608)757-5470  
www.co.rock.wi.us

Public Works Committee Meeting – Highway Minutes

Thursday, May 28, 2020 – 8:00 a.m.

Public Works Department- Committee Room

3715 Newville Road

Janesville, WI 53545

Call to Order. Chair Richard called the meeting of the Public Works Committee to order at 8:24 a.m.

Committee Members Present. Supervisors Richard, Mawhinney, Yeomans and Mulligan.

Committee Members Absent. Supervisor Rashkin.

Staff Members:

Duane Jorgenson	Director of Public Works
Nick Elmer	Assistant Director of Public Works
Amy Hartley	Secretary II
John Traynor	Parks Manager
Amy Friend	Community Coordinator

Others Present:

None

Approval of Agenda. Supervisor Yeomans moved approval of the agenda as presented, second by Supervisor Mawhinney. ADOPTED.

Approval of Minutes from January 28, 2020 – Parks and Highway. Supervisor Mawhinney moved approval of the minutes of January 28, 2020 as presented, second by Supervisor Yeomans. ADOPTED.

Election of Public Works Committee Vice Chair. Supervisor Yeomans nominated Supervisor Mawhinney as Highway Committee Chair, second by Supervisor Mulligan. No other nominations were made. ADOPTED.

Set Committee Meeting Times and Locations. Mr. Jorgenson discussed possible meeting time options. Supervisor Mawhinney made a motion to hold Parks Committee Meetings on the second Tuesday of each month at 8:00 a.m. and Highway Committee Meetings on the fourth Tuesday of each month at 8:00 a.m. Location of the meetings continues to be held at the Public Works Department. Second by Supervisor Yeomans. ADOPTED.

NOT OFFICIAL UNTIL APPROVED BY COMMITTEE

Citizen Participation, Communications, and Announcements. Mr. Traynor distributed the 2020 POROS Plan which will be presented at the June 11, 2020 County Board Meeting.

Mr. Traynor reported all parks are open; restrooms remain closed due to COVID-19 health risks. Research indicates different policies are in place throughout the state. Committee members agreed protocol should stay in place, as is, until further notice.

Mr. Jorgenson explained road school trainings available to staff and Committee members. Mr. Jorgenson will email the information to committee members this week. Committee members are directed to contact Ms. Hartley to register and/or to obtain further information.

Supervisor Yeomans requested an explanation of playground certification liability from prior Parks meeting. Mr. Traynor reported Ms. Carlson's confirmed positivity of this certification, not a liability but a benefit to the county. Mr. Traynor also intends to create an inspection log to record and review Rock County's playgrounds.

## **HIGHWAY BUSINESS**

Update and Discussion – County Project Updates. Mr. Elmer reviewed the attachment. Even with the COVID-19 restrictions, the Highway Department has been able to progress with the work schedule. Advancement continues for shouldering and ditching projects. Paving, grading and sealcoating progresses in the towns.

Update and Discussion – Federal Aid Project Status Update. Mr. Elmer reviewed the attachment and the project stages. Five bridge projects are scheduled for construction this summer with one already being completed. Mr. Jorgenson explained the county and/or town pays 20% of the cost and the state 80% for these projects.

Update and Discussion – CTH A (USH 14 – CTH M), MLS Grant Funding. Mr. Jorgenson announced the award of a \$1 million grant from the state. Rock County expressed gratitude as 1 of 34 recipients. The grant will help offset initial costs of construction.

Discussion and Possible Action – Order for Removal of Encroachments Located in (City Limits – Read Road) Right-of-Way CTH O. Supervisor Yeomans approved the order of removal of encroachments located in right-of-way CTH O, second by Supervisor Mawhinney. Mr. Jorgenson explained the sewer/water on CTH O will be extended. Due to this project, encroachments in the right of way will need to be removed. ADOPTED.

Discussion and Possible Action – Issue Paper – Professional Services Contract for Real Estate Acquisition - CTH A (USH 14 – Milton-Shopiere Road). Supervisor Mawhinney moved the Issue Paper, second by Supervisor Yeomans. Mr. Elmer explained the real estate acquisition on CTH A will be completed by the same firm that completed Phase 1. The cost per parcel on this phase was similar to the previous two phases. ADOPTED.

Discussion and Possible Action – Issue Paper – Professional Services Contract for Design Services – CTH K (State Line to Laird Road). Supervisor Yeomans moved the Issue Paper, second by Supervisor Mawhinney. Mr. Jorgenson reviewed the handout and briefly explained PASER ratings. ADOPTED.

Discussion and Possible Action – Issue Paper – Professional Services Contract for 2020-2021 Bridge Inspections. Supervisor Mawhinney moved the Issue Paper, second by Supervisor Yeomans. Mr. Jorgenson reviewed attachment and explained town reimbursement process/policy. ADOPTED.

Discussion and Possible Action – Issue Paper – 3-Party Design Contract – Elm Drive Bridge. Supervisor Yeomans moved the Issue Paper, second by Supervisor Mawhinney. Mr. Jorgenson reviewed the attachment and the process. The state covers 80% and the remaining 20% is split 50/50 with the town. ADOPTED.

Discussion and Possible Action – Issue Paper – Authorize purchase of (1) Single-Axle Truck Body, Plow, Wing and Spreader. Supervisor Mawhinney moved the Issue Paper, second by Supervisor Yeomans. Mr. Jorgenson reviewed the attachment and explained that overall, the Department is under budget. Supervisor Yeomans questioned vendor alternatives and Mr. Jorgenson replied how resources are limited. ADOPTED.

Review of Payments. Mr. Jorgenson reviewed and briefly explained purchases and the process.

Next Meeting Date: The next Highway Committee meeting is scheduled for June 23, 2020, at 8:00 a.m. at the Department of Public Works.

Adjournment. Supervisor Yeomans moves adjournment at 9:24 a.m., second by Supervisor Mawhinney. ADOPTED.

Respectfully Submitted,  
Amy J. Hartley, Secretary II

**Rock County Department of Public Works  
Division of Highways – Issue Paper**

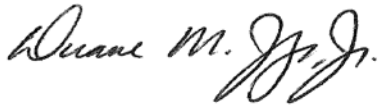
**ISSUE** – Approval of the Three-Party Design Contract with the Wisconsin Department of Transportation and EMCS, Inc. to provide engineering design services for the 2017-2022 Federal Aid CTH E Local Bridge Project.

**DISCUSSION** - Approximately every two years, the Wisconsin Department of Transportation solicits project applications for the Local Bridge Program. For the 2017-2022 cycle, the CTH E Bridge was approved for replacement. In 2020, Public Works Staff solicited statements of Qualifications from eligible engineering consulting firms to provide design for the project.

EMCS, Inc. was selected as the top design firm for the project and negotiations began between the three parties on the design contract. The final version of the contract is attached with a total contract price of \$85,214.49.

**RECOMMENDATION:** Approval

Respectfully submitted by,

A handwritten signature in black ink, appearing to read "Duane M. Jorgenson, Jr.", written in a cursive style.

Duane M. Jorgenson, Jr., P.E.  
Director of Public Works

ENGINEERING SERVICES CONTRACT

BETWEEN THE WISCONSIN DEPARTMENT OF TRANSPORTATION (DEPARTMENT),

Rock County (MUNICIPALITY)

AND EMCS, Inc. (CONSULTANT) FOR

Project ID 5334-00-00

City of Janesville – US 14

Marsh Creek Bridge, B-53-0385

CTH E, Rock County

This CONTRACT made and entered into by and between the DEPARTMENT, MUNICIPALITY and the CONSULTANT provides for those SERVICES described in the Scope of Services and Special Provisions and is generally for the purpose of providing the SERVICES solicited by the MUNICIPALITY in for replacement of the CTH E bridge over Marsh Creek and for preliminary and final design and preparation of the PS&E. This Qualification Based Selection was made based on the CONSULTANT'S Notice of Interest response and any interviews conducted.

The DEPARTMENT and MUNICIPALITY deem it advisable to engage the CONSULTANT to provide certain engineering SERVICES and has authority to contract for these SERVICES under sec. 84.01(13), Wis. Stats.

The DEPARTMENT REPRESENTATIVE is: Zach Pearson; Project Manager; 2101 Wright St, Madison, WI 53704; Zachary.Pearson@dot.wi.gov; 608-246-5319.

The MUNICIPALITY REPRESENTATIVE is: Duane Jorgenson; Rock County Director Public Works; 3715 N Newville Road, Janesville, WI 53545; Duane.Jorgenson@co.rock.wi.us; 608-757-5450.

The CONSULTANT REPRESENTATIVE is: Cory Inman; Project Manager; 1600 Aspen Commons #230, Middleton, WI 53562; cinman@emcsinc.com; 608-827-8810.

The CONSULTANT SERVICES will be performed for the DEPARTMENT's Southwest Region office located in Madison, WI and will be completed by June 30, 2022. Deliver PROJECT DOCUMENTS to 2101 Wright St, Madison, WI 53704, unless other directions are given by the DEPARTMENT.

Compensation for all SERVICES provided by the CONSULTANT under the terms of the CONTRACT will be from the:

DEPARTMENT       MUNICIPALITY

For all agency coordination, reports, survey, design, and PS&E preparation; actual costs to the CONSULTANT up to \$ 60,040.53, plus a fixed fee of \$ 3,846.29, not to exceed \$63,886.82.

For geotechnical engineering subcontracted to Terracon Consultants, Inc., the CONSULTANT'S actual cost to Terracon Consultants, Inc. not to exceed \$11,825 for units delivered based on rates in the table below.

Item	Unit	Unit Cost
Standard Auger Borings, 0 to 20 feet (standard sampling intervals, 2 ½ feet to 10, then 5 feet after)	Ft	\$ 19.00
Standard Auger Borings, 20 to 40 feet (standard sampling intervals 5 feet)	Ft	\$22.00
Standard Auger Borings, 40 to 60 feet (standard sampling intervals 5 feet)	Ft	\$25.00
Rock Core – Setup, 5-foot core, unconfined compressive strength, and RQD and RMR76 properties (if necessary)	Each	\$600.00
750.00Traffic Control, 2 person flagging crew	Day	\$1,500.00
Traffic Control, signage	Days	\$100.00
Initial Mobilization/Demobilization	Each	\$575.00
Borehole Abandonment per WNDR Standards-Bentonite Grout	Ft	\$ 5.00
Pavement Patches	Ea	\$ 30.00
Clean Up/Cuttings to ROW, 100 feet from Bridge	Each	\$75.00
Project Management/Utility Clearance/Boring Layout	Each	\$125.00
Laboratory Testing (moistures/hand pens/mechanical analysis – D50 and D90 values)	LS	\$1,000.00
Engineering Report	Each	\$3,000.00

For hydrology and hydraulic modeling subcontracted to KL Engineering; the CONSULTANT'S actual cost to KL Engineering based on KL Engineering's actual cost up to \$8,896.28 plus fixed fee of \$606.39 not to exceed \$9,502.67.

Compensation for all SERVICES provided by the CONSULTANT under the terms of the CONTRACT shall be for an amount not to exceed \$85,214.49.

The CONSULTANT does and will comply with the laws and regulations relating to the profession of engineering and will provide the desired engineering SERVICES.

If the prime CONSULTANT is a certified Disadvantaged Business Enterprise, SERVICES performed by the CONSULTANT can be considered in meeting this requirement.

This CONTRACT incorporates and the parties agree to all of the standard provisions of the Three Party Design Engineering Services Contract, dated July 1, 2015 and referenced in Procedure 8-15-1 of the State of Wisconsin Department of Transportation Facilities Development Manual. CONSULTANT acknowledges receipt of a copy of these standard provisions.



This CONTRACT incorporates all of the MANUALS defined in the CONTRACT.

The parties also agree to all of the Special Provisions which are annexed and made a part of this CONTRACT, consisting of 9 pages.

Nothing in this CONTRACT accords any third part beneficiary rights whatsoever on any non-party that may be enforced by any non-party to this contract.

For the CONSULTANT

For the DEPARTMENT

By: \_\_\_\_\_

By: \_\_\_\_\_

Title: \_\_\_\_\_

Contract Manager, WisDOT

Date: \_\_\_\_\_

Date: \_\_\_\_\_

For the MUNICIPALITY

GOVERNOR

By: \_\_\_\_\_

By: \_\_\_\_\_

Title: \_\_\_\_\_

Title: \_\_\_\_\_

Date: \_\_\_\_\_

Date: \_\_\_\_\_

VI. SPECIAL PROVISIONS

A. DESIGN REPORTS

(1) Design Study Report

Supplement standard provision II.C.2:

Prepare a Local Road Bridge Design Study Report.

Roadside hazard analysis, Design Justifications, Safety Certification Documentation, and encroachment reporting will be documented in the DSR. Individual reports would be considered EXTRA WORK.

(2) Transportation Management Plan (TMP)

Prepare a Type 2 TMP in the DEPARTMENT's online WisTMP portal. Coordinate the proposed detour with the MUNICIPALITY and the DEPARTMENT.

(3) Structure Survey Report

Prepare a Structure Survey Report for the proposed B-53-0385 in accordance with the MANUAL.

(4) Hydraulic Analysis Report

Prepare a Hydraulic Analysis Report for the existing B-53-0010 and proposed B-53-0385 in accordance with the MANUAL.

Size up to two proposed openings.

Complete the analysis and calibrate models with regulatory elevations on the Rock River. Coordinate with WDNR, FEMA, and local floodplain zoning for calibration of models.

(5) Pavement Design Report

A pavement design report is not required per the MANUAL. Provide a WisPave worksheet or other documentation approved by the MUNICIPALITY for documentation of the proposed pavement design on the bridge approaches. Attach to the DSR.

B. ENVIRONMENTAL DOCUMENTATION

Execute a disclosure statement as required by 40 CFR 1506.5(c).

Prepare a CEC environmental document for the PROJECT as specified in the MANUAL and Chapter TRANS 400, Wisconsin Administrative Code. Furnish the required number to the MUNICIPALITY for approval.

Prepare an environmental document that evaluates reasonable alternatives to the PROJECT and consider other reasonable actions or activities that may achieve the same or similar goals of the proposed highway PROJECT, including other or additional transportation alternatives and intermodal opportunities and the alternative of taking no action. Evaluate alternative courses of action based upon a balanced consideration of the environment, public comments, and the need for safe and efficient transportation consistent with local, state, and national environmental goals. Prepare environmental documents that are concise and emphasize significant environmental issues and plausible alternatives. Comply with requirements specified in the MANUAL and TRANS 400, Wisconsin Administrative Code. In the event of a conflict between the MANUAL and TRANS 400, Wisconsin Administrative Code, the administrative rule supersedes.

- (1) Environmental Assessments are not required.
- (2) Environmental Impact Statements are not required.
- (3) Agricultural Impact Notices are not required.
- (4) Review PROJECT area of Section 4(f) resources and document in environmental document. Individual Section 4(f) Evaluations are EXTRA WORK.
- (5) Review PROJECT area of Section 6(f) resources and document in environmental document. Individual Section 6(f) Evaluations are EXTRA WORK.
- (6) Historical and Archaeological Surveys and Studies are not required.

The PROJECT was placed on the screening list for archaeological and historical resources on February 2, 2020.

- (7) Noise Analysis is not required.
- (8) Air Quality analysis is not required.
- (9) Hazardous Materials/Contamination Assessments

A full Phase I investigation for the PROJECT is not required. The CONSULTANT shall screen the project for any potential contamination and complete the hazmat checklist in accordance with the MANUAL. The MUNICIPALITY will provide a signature on the checklist for DEPARTMENT files.

The DEPARTMENT will complete asbestos inspections. The CONSULTANT will incorporate the results into the PROJECT documents.

- (10) Wetland delineations are not required by the CONSULTANT. Wetland determination(s) will be provided by WDNR.
- (11) Threatened and endangered species will be coordinated with WDNR and USFWS. Field surveys are EXTRA WORK.

C. AGENCY COORDINATION

(1) Section 401 and 402 Certifications:

Evaluate the effects of the PROJECT on water quality, in accordance with the provisions of the Clean Water Act and Chapter TRANS 400, Wisconsin Administrative Code and the MANUAL; and prepare the necessary application.

Complete the TCGP online in the WDNR portal, if required.

Coordinate final certifications with WDNR.

(2) Section 404 Permits:

Evaluate the potential for discharge of fill materials into the waters of the United States, in accordance with the provisions of the Clean Water Act and Chapter TRANS 400, Wisconsin Administrative Code and the MANUAL; and prepare the necessary permit application.

Coordinate wetland and waterway impacts with USACOE.

(3) Section 9 and 10 Permits are not required.

(4) Complete coordination with the following agencies:

- WDNR
- USFWS
- USACOE
- Native American Tribes
- BOA and Local Airport(s)
- Rock County Land Conservation (floodplain zoning)

D. RAILROAD/ UTILITY INVOLVEMENTS

(1) Railroad Negotiations/Agreements are not required.

(2) Utility Coordination

Perform all utility coordination in accordance with:

- The MANUAL
- The WisDOT "Guide to Utility Coordination"

Utility coordination meetings are not anticipated.

(3) The DEPARTMENT/MUNICIPALITY will provide the CONSULTANT with a list of known utilities on the PROJECT and a list of contact personnel for utility coordination. This list is not warranted to be complete, but is furnished to assist the CONSULTANT. Verify and update the list, based on Digger's located and information provided by the utilities.

- (4) Confer on an ongoing basis with all utility facility owners in the project vicinity to establish mutual understanding on design features of the project affecting utility facilities, and shall keep the MUNICIPALITY informed of all such coordination activities. Provide the MUNICIPALITY with plans and information that will allow it to meet its planned utility coordination schedule.

Utility facility notifications include:

- Send initial notification of project and resolve all utility ownership
- Send plans and potential conflicts for work plan requests; resolve all issues with work plans until an acceptable work plan is received
- Send final plans and utility specifications with work plan approvals

Use DEPARTMENT forms for utility correspondence.

- (5) Utility Negotiations/Agreements are not anticipated.
- (6) Follow up with utility relocations prior to PROJECT LET.

#### E. PUBLIC INVOLVEMENT

- (1) Public Involvement Meetings:

- Conduct or assist the MUNICIPALITY in holding one public involvement meeting(s) and explain to the public concepts and probable impacts of this PROJECT.
- Prepare all exhibits and supplementary handout material and provide the equipment necessary to conduct the public involvement meeting(s).
- Prepare a summary report after the public involvement meeting(s).
- Discuss with the MUNICIPALITY the comments received and recommend the possible disposition of these comments and suggestions after the public involvement meeting(s).
- Make all the necessary arrangements for scheduling the public involvement meeting(s) and provide notices and press releases for the MUNICIPALITY'S use.
- Provide the MUNICIPALITY with copies of all public involvement correspondence and file notes.
- Coordinate meeting schedules with the MUNICIPALITY'S representative.
- Hold a pre-meeting call to coordinate details of the meeting with the MUNICIPALITY.

- (2) Formal Public Hearings are not required.
- (3) Open Forum Public Hearings are not required.
- (4) Project Mailings, Newsletters:

Maintain an active mailing list of stakeholders for the PROJECT.

- (5) Prepare a Public Involvement Plan for the PROJECT for approval by the MUNICIPALITY.

- (6) Send initial notification letters to all property owners and local officials including emergency services and other identified stakeholders.
- (7) Hold one Operational Planning Meeting (OPM) with all local officials including emergency services, utilities, and agencies.

#### F. MEETINGS

- (1) Hold coordination meeting calls as deemed necessary to plan, review, and coordinate the PROJECT with the MUNICIPALITY and the DEPARTMENT including a 30% review and 60% review meeting.
- (2) A Final Plan Review Meeting (Pre-PS&E submittal) with the MUNICIPALITY and DEPARTMENT shall be held approximately 45 - 60 days ahead of the P.S. & E. submittal date. Meeting shall be held electronically.
- (3) Attend the pre-construction conference as scheduled by the MUNICIPALITY.

#### G. LOCATING

Not required.

#### H. SURVEYS

Complete topographic surveys to prepare plans for the PROJECT.

- Horizontal & vertical datum - WISCRS, ROCK DATUM, NAD 83 (2011) Horizontal, NAVD 88 (2012) Vertical
  - Set project control (2 control points and 2 benchmarks) around work area
- Topographic Survey
  - Full topographic survey 300-feet north and south of structure to accommodate guardrail grading (to ROW)
  - Utility survey as marked by diggers hotline.
  - All visible corner property pipes and ROW markers to establish existing ROW
- Hydraulic survey for Structure Survey Report
  - Existing Marsh Creek Bridge
  - Upstream Railroad Bridge – coordinate access with Railroad, as required
  - Required stream cross sections and data for hydraulic model
- Section corner information to establish existing ROW (5)
- Field survey boring locations and elevations – 2 borings

#### I. SOILS AND SUBSURFACE INVESTIGATIONS

- (1) Perform two borings for purposes of structural design. Provide pavement design parameters from the borings.

- (2) Investigations of subsurface soil conditions for foundations at the sites of proposed bridges or other structures are required. They shall consist of not less than one machine powered boring within the approximate limits of each substructure unit.

Foundation borings shall be performed to yield sufficient detailed data to enable an engineering design of the structure and its foundation per DEPARTMENT standards.

Foundation investigations shall be coordinated with the MUNICIPALITY, with a minimum of three working days prior notice, to enable the MUNICIPALITY to make provisions for on-site observations and to evaluate conditions during drilling.

When borings have reached the depth of 50-feet without providing necessary data, the driller is authorized to continue drilling until depths reach 120 percent of the planned depths. When necessary data is obtained for any individual boring, prior to borings reaching the planned depth, the drilling for that individual boring shall be terminated.

When completion of drilling to 120 percent of the depth of any individual boring as set forth above is not sufficient to adequately assess subsurface conditions, or otherwise determine all the required foundation information, the CONSULTANT shall recommend revised boring depths or a revised boring program for verbal authorization by the MUNICIPALITY. The extent of all subsurface foundation investigations performed shall be fully justified in the Soils Report for the PROJECT.

All boreholes and monitoring wells shall be backfilled as per the April 20, 1992 guidelines titled "Wisconsin Department of Transportation Geotechnical Unit -Drilled Borehole and Monitoring Well Abandonment Procedures".

Record final borehole location; station and referenced offset and elevation. CONSULTANT shall provide final boring location GPS coordinates and provide a Google Earth image of project site showing coordinate correct as-drilled boring locations.

- (3) Perform subsurface investigations to analyze project geotechnical concerns and provide full detailed recommendations. The soils shall be classified by pedological means to provide pavement design parameters.

## J. ROAD PLANS

Section II C (9) in the Standard Provision of the CONTRACT is amended to include the following plans:

- Title sheet
- General notes
- Typical section
- Construction details
- Erosion control
- Detour Route and Traffic Control Overview
- Plan and Profile
- Earthwork
- Cross sections

Prepare a 30% submittal including the following:

- Preliminary plan (30% level) including proposed structure size and type
- Estimate and FIIPS qtys
- Draft environmental document

Prepare a 60% submittal including the following:

- Preliminary plan (60% level)
- Estimate and FIIPS qtys
- Updated environmental document
- Design Study Report for approval
- TMP (60%) for approval
- Stormwater Management worksheet

Prepare a Pre-PS&E (90%) and PS&E (100%) in accordance with the MANUAL including estimate documentation and road builders (FIIPS) quantities.

Provide the alignment in XML and CAD format for use during construction.

#### K. STRUCTURE PLANS

- (1) Prepare a Structure Survey Report/Hydraulic Report, which includes a discussion of structure sizing, in accordance with the MANUAL. The completed preliminary plan shall show the structure plan, elevation, and typical cross section, and all pertinent data shall appear on the first sheet(s) of the completed structure plans. Submit the report with the structure survey report to the DEPARTMENT's Bureau of Structures for approval. Prior to submittal, coordinate preliminary sizing results with the MUNICIPALITY and the DEPARTMENT.

Size up two proposed openings for evaluation of hydraulics.

- (2) Prepare Plans for Structures in accordance with the MANUAL for a single span concrete structure. Assume the structure is located on the existing alignment and profile (limited to no change in vertical due to hydraulics).

Complete a preliminary submittal in accordance with the MANUAL for approval of size, type, and location by the DEPARTMENT.

Complete a final submittal including all required exhibits in accordance with the MANUAL including plans, design computations, load ratings, and quantity calculations.

- (3) Structural Approach Slabs are not required. Structural Approach Slabs are EXTRA WORK.

#### L. PLATS

Right-of-Way Plats and TLE exhibits are EXTRA WORK.



M. HIGHWAY SYSTEM CHANGES

Highway System Changes are not required.

N. TRAFFIC

Traffic data collection is not required. Use available data from MUNICIPALITY for the PROJECT documents and plans.

O. SERVICES PROVIDED BY THE MUNICIPALITY

The MUNICIPALITY will provide to the CONSULTANT the following for the PROJECT:

- As-built plans (as available)
- Existing Plats (as available)
- Traffic Data (as available)
- Utility permits (as available)
- Utility contact list (County records)
- Approved local bridge program application

P. SERVICES PROVIDED BY THE DEPARTMENT

The DEPARTMENT will provide to the CONSULTANT the following for the PROJECT:

- As-built plans (as available)
- Existing Plats (as available)
- Traffic Data (as available)
- Utility contact list (WisDOT TUMS)
- Asbestos inspection (WisDOT CO)
- Bridge inspection reports & as-builts (WisDOT HSI site)
- Approved local bridge program application updates

PROSECUTION AND PROGRESS

- (1) The CONSULTANT shall report on the progress of the PROJECT as stipulated in the contract agreement. Standard benchmarks, consistent with DEPARTMENT'S internal staff benchmarks, will be reported monthly to the DEPARTMENT and MUNICIPALITY. The report will be delivered via email and WisDOT CARS to the MUNICIPALITY and DEPARTMENT monthly.
- (2) The CONSULTANT proposes to sublet these services to
  - Terracon Consultants, Inc. - geotechnical engineering
  - KL Engineering – hydrologic and hydraulic analysis
- (3) The following items of work will be completed and submitted to the MUNICIPALITY by the indicated dates, if CONSULTANT has received the Notice to Proceed by July 1, 2020.

Report Title	Date
Survey	July/August 2020
Public Information Meeting	September/October 2020
30% plan, draft env document, and estimate including SSR submittal to BOS	October/November 2020
Final Environmental Document	October/November 2020
BOS approval on sizing	November 2020/December 2020
60% plans and report	January/February 2021
Design Study Report approval	January 2020/February 2021
Plans to utilities	January/February 2021
Pre-PS&E plans to Bureau Final structure plans/docs (2 mo prior to PS&E)	June 1, 2021
PS&E	August 1, 2021
Construction Letting	December 14, 2021
Pre-construction Meeting (anticipated)	June 2022

5334-00-00  
 CITY OF JANESVILLE - US 14  
 CTH E  
 Marsh Creek Bridge, B-53-0385  
 Rock County

**PROJECT SCHEDULE**

TASK *	2020							2021							2022													
	J	J	A	S	O	N	D	J	F	M	A	M	J	J	A	S	O	N	D	J	F	M	A	M	J	J	A	S
Preliminary Design						■			▲																			
Public Information Meeting																												
Environmental Document																												
Design Study Report																												
Utility Coordination																												
Final Design													◆		★													
Utility Relocation																												
Bid Letting																												
Construction																												

MILESTONE DATE  
 30% PLAN SUBMITTAL/OPM  
 60% PLAN SUBMITTAL  
 90%/PRE-PSE SUBMITTAL  
 FINAL PSE



Report Title	Date
Survey	July/August 2020
Public Information Meeting	September/October 2020
30% plan, draft env document, and estimate including SSR submittal to BOS	October/November 2020
Final Environmental Document	October/November 2020
BOS approval on sizing	November 2020/December 2020
60% plans and report	January/February 2021
Design Study Report approval	January 2020/February 2021
Plans to utilities	January/February 2021
Pre-PS&E plans to Bureau Final structure plans/docs (2 mo prior to PS&E)	June 1, 2021
PS&E	August 1, 2021
Construction Letting	December 14, 2021
Pre-construction Meeting (anticipated)	June 2022

**Summary of Staff Hours and Direct Labor Costs**



**Actual Cost Tasks**

**Project I.D. 5334-00-00, City of Janesville – US 14, Marsh Creek Bridge, B-53-0385, CTH E, Rock County**

EMCS	PHASE	Classification		Design Proj Mgr		Design Engr		Struc Engr Senior		Struc Engr Mid		Survey Proj Mgr		Survey Tech Mid		Survey Tech Entry		Total Direct Labor	
		Avg. Hourly Wage	Activity Code	Hours	Dollars	Hours	Dollars	Hours	Dollars	Hours	Dollars	Hours	Dollars	Hours	Dollars	Hours	Dollars	Hours	Dollars
ADMIN	Administration	887 - Manage Project Scope and Schedule	887	22	\$825.00	0	\$0.00	0	\$0.00	0	\$0.00	0	\$0.00	0	\$0.00	0	\$0.00	22	\$825.00
QA/QC	QA/QC	890 - Manage Project Quality	890	8	\$300.00	0	\$0.00	0	\$0.00	0	\$0.00	0	\$0.00	0	\$0.00	0	\$0.00	8	\$300.00
PI	Public Involvement	743 - Manage Project Stakeholders	743	24	\$900.00	6	\$177.84	0	\$0.00	0	\$0.00	0	\$0.00	0	\$0.00	0	\$0.00	30	\$1,077.84
ENV	Environmental	766 - Analyze Natural Environment Impact	766	5	\$187.50	6	\$177.84	0	\$0.00	0	\$0.00	0	\$0.00	0	\$0.00	0	\$0.00	11	\$365.34
		769 - Environmental Documentation and Agency Coordination	769	8	\$300.00	16	\$474.24	0	\$0.00	0	\$0.00	0	\$0.00	0	\$0.00	0	\$0.00	24	\$774.24
UTIL-RR	Utility & RR Coordination	746 - Coordinate Utilities	746	10	\$375.00	6	\$177.84	0	\$0.00	0	\$0.00	0	\$0.00	0	\$0.00	0	\$0.00	16	\$552.84
		666 - Establish Project Control	666	0	\$0.00	0	\$0.00	0	\$0.00	0	\$0.00	0	\$0.00	9	\$289.26	0	\$0.00	9	\$289.26
SUR-PLT	Survey	723 - Conduct and Process Existing Field Survey	723	0	\$0.00	0	\$0.00	0	\$0.00	0	\$0.00	0	\$0.00	48	\$1,542.72	25	\$607.75	73	\$2,150.47
		726 - Survey Existing and Proposed Right-of-Way	726	0	\$0.00	0	\$0.00	0	\$0.00	0	\$0.00	4	\$183.12	0	\$0.00	0	\$0.00	4	\$183.12
		768 - Design Erosion Control and Landscaping	768	2	\$75.00	6	\$177.84	0	\$0.00	0	\$0.00	0	\$0.00	0	\$0.00	0	\$0.00	8	\$252.84
		776 - Design Geometrics and Details	776	22	\$825.00	58	\$1,719.12	0	\$0.00	0	\$0.00	0	\$0.00	0	\$0.00	0	\$0.00	80	\$2,544.12
DES	Design	786 - Develop Quantities and Estimates	786	12	\$450.00	68	\$2,015.52	0	\$0.00	0	\$0.00	0	\$0.00	0	\$0.00	0	\$0.00	80	\$2,465.52
		856 - Develop PSE Documents	856	13	\$487.50	6	\$177.84	0	\$0.00	0	\$0.00	0	\$0.00	0	\$0.00	0	\$0.00	19	\$665.34
STR	Structure Design	647 - Develop Structure Survey Report	647	3	\$112.50	13	\$385.32	3	\$3.03	18	\$596.70	0	\$0.00	0	\$0.00	0	\$0.00	37	\$1,097.55
		656 - Design Structure	656	0	\$0.00	0	\$0.00	30	\$30.30	216	\$7,160.40	0	\$0.00	0	\$0.00	0	\$0.00	246	\$7,190.70
TRA	Traffic	347 - Collect Traffic Field Data	1	0	\$20.00	0	\$0.00	0	\$0.00	0	\$0.00	0	\$0.00	0	\$0.00	0	\$0.00	0	\$20.00
		788 - Develop Traffic Control and Staging	788	5	\$187.50	18	\$533.52	0	\$0.00	0	\$0.00	0	\$0.00	0	\$0.00	0	\$0.00	23	\$721.02
<b>TOTAL:</b>				<b>134</b>	<b>\$5,045.00</b>	<b>203</b>	<b>\$6,016.92</b>	<b>33</b>	<b>\$33.33</b>	<b>234</b>	<b>\$7,757.10</b>	<b>4</b>	<b>\$183.12</b>	<b>57</b>	<b>\$1,831.98</b>	<b>25</b>	<b>\$607.75</b>	<b>690</b>	<b>\$21,475.20</b>

# emcs nsultant Individual Direct Labor Rates

## Project I.D. 5334-00-00, City of Janesville – US 14, Marsh Creek Bridge, B-53-0385, CTH E, Rock County

Employee Name(a)	Classification(b)	Current Rate (c) 2020	% Pay Increase (d)	New Pay Rate(e) 2021	New Pay Rate(e) 2022	% Work at Current Rate(f) 2020	% Work at Current Rate(f) 2021	% Work at Current Rate(f) 2022	Weighted Average Hourly Rate(g)
388	Design Proj Mgr	\$37.02	2.6%	\$37.98	\$38.97	50%	50%	0%	\$37.50
*	Design Engr	\$29.26	2.6%	\$30.02	\$30.80	50%	50%	0%	\$29.64
403	Struc Engr Senior	\$1.00	2.6%	\$1.03	\$1.05	50%	50%	0%	\$1.01
*	Struc Engr Mid	\$32.72	2.6%	\$33.57	\$34.44	50%	50%	0%	\$33.15
335	Survey Proj Mgr	\$45.19	2.6%	\$46.36	\$47.57	50%	50%	0%	\$45.78
367	Survey Tech Mid	\$31.73	2.6%	\$32.55	\$33.40	50%	50%	0%	\$32.14
422	Survey Tech Entry	\$24.00	2.6%	\$24.62	\$25.26	50%	50%	0%	\$24.31

Contract Completion Date:

6/30/2022

Date of increase:

January 1 of each year

\* See Consultant Weighted Direct Labor Rates



**Consultant Weighted Direct Labor Rates**

**Project I.D. 5334-00-00, City of Janesville – US 14, Marsh Creek Bridge, B-53-0385, CTH E, Rock County**

**Classification:**                      **Design Engr**

Employee Name(a)	Current Rate(b)	Percent Contribution(c)	(b*c)
409	\$32.45	40.00%	\$12.98
440	\$28.85	45.00%	\$12.98
419	\$22.00	15.00%	\$3.30
<b>TOTAL</b>		<b>100.00%</b>	<b>\$29.26</b>

**Classification:**                      **Struc Engr Mid**

Employee Name(a)	Current Rate(b)	Percent Contribution(c)	(b*c)
421	\$33.65	80.00%	\$26.92
430	\$29.00	20.00%	\$5.80
<b>TOTAL</b>		<b>100.00%</b>	<b>\$32.72</b>

**Fee Computation Summary by Engineering Task**



**Actual Cost Tasks**

**Project I.D. 5334-00-00, City of Janesville – US 14, Marsh Creek Bridge, B-53-0385, CTH E, Rock County**

EMCS	PHASE	Task	Activity Code	Direct Labor Costs	Firm Indirect Costs	Indirect Cost Rate to Compute Fixed Fee (150%)	Direct Expenses	Total
PHASE	LONG NAME				179.49%	7.25%		
ADMIN	Administration	887 - Manage Project Scope and Schedule	887	\$825.00	\$1,480.79	\$149.53	\$20.13	\$2,475.45
QA/QC	QA/QC	890 - Manage Project Quality	890	\$300.00	\$538.47	\$54.38	\$0.00	\$892.85
PI	Public Involvement	743 - Manage Project Stakeholders	743	\$1,077.84	\$1,934.62	\$195.36	\$115.00	\$3,322.82
ENV	Environmental	766 - Analyze Natural Environment Impact	766	\$365.34	\$655.75	\$66.22	\$0.00	\$1,087.31
		769 - Environmental Documentation and Agency Coordination	769	\$774.24	\$1,389.68	\$140.33	\$0.00	\$2,304.25
UTIL-RR	Utility & RR Coordination	746 - Coordinate Utilities	746	\$552.84	\$992.29	\$100.20	\$0.00	\$1,645.33
SUR-PLT	Survey	666 - Establish Project Control	1	\$35.00	\$62.82	\$6.34	\$103.50	\$207.66
		723 - Conduct and Process Existing Field Survey	723	\$2,150.47	\$3,859.88	\$389.77	\$310.50	\$6,710.62
		726 - Survey Existing and Proposed Right-of-Way	726	\$183.12	\$328.68	\$33.19	\$0.00	\$544.99
DES	Design	768 - Design Erosion Control and Landscaping	768	\$252.84	\$453.82	\$45.83	\$0.00	\$752.49
		776 - Design Geometrics and Details	776	\$2,544.12	\$4,566.44	\$461.12	\$69.00	\$7,640.68
		786 - Develop Quantities and Estimates	786	\$2,465.52	\$4,425.36	\$446.88	\$0.00	\$7,337.76
STR	Structure Design	856 - Develop PSE Documents	856	\$665.34	\$1,194.22	\$120.59	\$0.00	\$1,980.15
		647 - Develop Structure Survey Report	647	\$1,097.55	\$1,969.99	\$198.93	\$92.00	\$3,358.47
TRA	Traffic	656 - Design Structure	656	\$7,190.70	\$12,906.59	\$1,303.31	\$0.00	\$21,400.60
		788 - Develop Traffic Control and Staging	788	\$721.02	\$1,294.16	\$130.68	\$0.00	\$2,145.86
<b>TOTAL:</b>			2	\$21,220.94	\$38,109.46	\$3,846.29	\$710.13	\$63,886.82

Current Home Office Indirect Cost Rate:  
Indirect Cost Rate to Compute Fixed Fee:

179.49%  
150.00%

Fixed Fee: 7.25%



**Direct Costs by Item**

**Project I.D. 5334-00-00, City of Janesville – US 14, Marsh Creek Bridge, B-53-0385, CTH E, Rock County**

EMCS PHASE	PHASE LONG NAME	Task	Miles	Rate	Items					Total Expenses
					Employee Vehicle Mileage	Company Vehicle Mileage	Employee Vehicle Allowance	Lodging	Meals	
ADMIN PI	Administration	887 - Manage Project Scope and Schedule	35	\$0.575	\$20.13	\$0.00	\$0.00	\$0.00	\$0.00	\$20.13
	Public Involvement	743 - Manage Project Stakeholders	200	\$0.575	\$115.00	\$0.00	\$0.00	\$0.00	\$0.00	\$115.00
SUR-PLT	Survey	666 - Establish Project Control	180	\$0.575	\$0.00	\$103.50	\$0.00	\$0.00	\$0.00	\$103.50
		723 - Conduct and Process Existing Field Survey	540	\$0.575	\$0.00	\$310.50	\$0.00	\$0.00	\$0.00	\$310.50
DES	Design	776 - Design Geometrics and Details	120	\$0.575	\$69.00	\$0.00	\$0.00	\$0.00	\$0.00	\$69.00
STR	Structure Design	647 - Develop Structure Survey Report	160	\$0.575	\$92.00	\$0.00	\$0.00	\$0.00	\$0.00	\$92.00
<b>TOTAL</b>			1235							\$710.13

**DIRECT EXPENSE DETAIL**

	Trips	Miles/Trip	Miles on Site	Total Miles
887 - Manage Project Scope and Schedule	1	35		35
743 - Manage Project Stakeholders	2	100		200
666 - Establish Project Control	1	160	20	180
723 - Conduct and Process Existing Field Survey	3	160	60	540
776 - Design Geometrics and Details	1	100	20	120
647 - Develop Structure Survey Report	1	160		160
			Total	1235





**Consultant Contract Total Fee Computation**

<b>Project ID</b>	<b>Project I.D. 5334-00-00, City of Janesville – US 14, Marsh Creek Bridge, B-53- 0385, CTH E, Rock County</b>			<b>Total for Contract</b>
<b>Number of Staff Hours</b>	690			690
<b>Total Direct Labor</b>	\$21,220.94			\$21,220.94
<b>Total Indirect Costs</b>	\$38,109.46			\$38,109.46
<b>Fixed Fee</b>	\$3,846.29			\$3,846.29
<b>Direct Costs</b>	\$710.13			\$710.13
<b>Subtotal</b>	<b>\$63,886.82</b>			<b>\$63,886.82</b>
<b>Terracon</b>	\$11,825.00			\$11,825.00
<b>KL Engineering</b>	\$9,502.67			\$9,502.67
<b>Subcontract Subtotal</b>	<b>\$21,327.67</b>			<b>\$21,327.67</b>
<b>TOTAL COST:</b>	<b>\$85,214.49</b>			<b>\$85,214.49</b>

Current Home Office Indirect Cost

Rate: 179.49%

Fixed Fee: 7.25%

Indirect Cost Rate to Compute Fixed

Fee: 150.00%



May 5, 2020

EMCS, Inc.  
1600 Aspen Commons, Suite 230  
Middleton, WI 53562

Attn: Mr. Cory Inman, P.E. / Project Engineer  
P: 608-827-8810  
E: [CInman@emcsinc.com](mailto:CInman@emcsinc.com)

Re: Proposal for Geotechnical Engineering Services  
Project ID: 5334-00-00  
City of Janesville – USH 14  
Marsh Creek Bridge, B-53-0385  
Rock County, Wisconsin  
Terracon Proposal No. P58205094

Dear Mr. Inman:

We appreciate the opportunity to submit this proposal to EMCS, Inc. to provide Geotechnical Engineering services for the above referenced project. The following are exhibits to the attached Agreement for Services.

Exhibit A	Project Understanding
Exhibit B	Scope of Services
Exhibit C	Compensation and Project Schedule
Exhibit D	Site Location

Our base fee to perform the scope of services described in this proposal is **\$11,825**. See Exhibit C for more details of our fees and consideration of additional services.

Terracon understands that we will be issued a subcontract agreement upon approval.

Sincerely,

**Terracon Consultants, Inc.**

Colin T. Henderson, P.E.  
Project Engineer  
Geotechnical Services

Paul J. Kozzarek, P.E.  
Department Manager  
Geotechnical Services

Terracon Consultants, Inc. 9856 South 57<sup>th</sup> Street Franklin, WI 53132  
P [414] 423 0255 F [414] 423 0566 [terracon.com](http://terracon.com)

Environmental

Facilities

Geotechnical

Materials

**AGREEMENT FOR SERVICES**

This **AGREEMENT** is between EMCS, Inc. ("Client") and Terracon Consultants, Inc. ("Consultant") for Services to be provided by Consultant for Client on the USH 14 over Marsh Creek Bridge Replacement project ("Project"), as described in Consultant's Proposal dated 05/04/2020 ("Proposal"), including but not limited to the Project Information section, unless the Project is otherwise described in Exhibit A to this Agreement (which section or Exhibit is incorporated into this Agreement).

- 1. Scope of Services.** The scope of Consultant's services is described in the Proposal, including but not limited to the Scope of Services section ("Services"), unless Services are otherwise described in Exhibit B to this Agreement (which section or exhibit is incorporated into this Agreement). Portions of the Services may be subcontracted. Consultant's Services do not include the investigation or detection of, nor do recommendations in Consultant's reports address the presence or prevention of biological pollutants (e.g., mold, fungi, bacteria, viruses, or their byproducts) or occupant safety issues, such as vulnerability to natural disasters, terrorism, or violence. If Services include purchase of software, Client will execute a separate software license agreement. Consultant's findings, opinions, and recommendations are based solely upon data and information obtained by and furnished to Consultant at the time of the Services.
- 2. Acceptance/ Termination.** Client agrees that execution of this Agreement is a material element of the consideration Consultant requires to execute the Services, and if Services are initiated by Consultant prior to execution of this Agreement as an accommodation for Client at Client's request, both parties shall consider that commencement of Services constitutes formal acceptance of all terms and conditions of this Agreement. Additional terms and conditions may be added or changed only by written amendment to this Agreement signed by both parties. In the event Client uses a purchase order or other form to administer this Agreement, the use of such form shall be for convenience purposes only and any additional or conflicting terms it contains are stricken. This Agreement shall not be assigned by either party without prior written consent of the other party. Either party may terminate this Agreement or the Services upon written notice to the other. In such case, Consultant shall be paid costs incurred and fees earned to the date of termination plus reasonable costs of closing the Project.
- 3. Change Orders.** Client may request changes to the scope of Services by altering or adding to the Services to be performed. If Client so requests, Consultant will return to Client a statement (or supplemental proposal) of the change setting forth an adjustment to the Services and fees for the requested changes. Following Client's review, Client shall provide written acceptance. If Client does not follow these procedures, but instead directs, authorizes, or permits Consultant to perform changed or additional work, the Services are changed accordingly and Consultant will be paid for this work according to the fees stated or its current fee schedule. If project conditions change materially from those observed at the site or described to Consultant at the time of proposal, Consultant is entitled to a change order equitably adjusting its Services and fee.
- 4. Compensation and Terms of Payment.** Client shall pay compensation for the Services performed at the fees stated in the Proposal, including but not limited to the Compensation section, unless fees are otherwise stated in Exhibit C to this Agreement (which section or Exhibit is incorporated into this Agreement). If not stated in either, fees will be according to Consultant's current fee schedule. Fee schedules are valid for the calendar year in which they are issued. Fees do not include sales tax. Client will pay applicable sales tax as required by law. Consultant may invoice Client at least monthly and payment is due upon receipt of invoice. Client shall notify Consultant in writing, at the address below, within 15 days of the date of the invoice if Client objects to any portion of the charges on the invoice, and shall promptly pay the undisputed portion. Client shall pay a finance fee of 1.5% per month, but not exceeding the maximum rate allowed by law, for all unpaid amounts 30 days or older. Client agrees to pay all collection-related costs that Consultant incurs, including attorney fees. Consultant may suspend Services for lack of timely payment. It is the responsibility of Client to determine whether federal, state, or local prevailing wage requirements apply and to notify Consultant if prevailing wages apply. If it is later determined that prevailing wages apply, and Consultant was not previously notified by Client, Client agrees to pay the prevailing wage from that point forward, as well as a retroactive payment adjustment to bring previously paid amounts in line with prevailing wages. Client also agrees to defend, indemnify, and hold harmless Consultant from any alleged violations made by any governmental agency regulating prevailing wage activity for failing to pay prevailing wages, including the payment of any fines or penalties.
- 5. Third Party Reliance.** This Agreement and the Services provided are for Consultant and Client's sole benefit and exclusive use with no third party beneficiaries intended. Reliance upon the Services and any work product is limited to Client, and is not intended for third parties other than those who have executed Consultant's reliance agreement, subject to the prior approval of Consultant and Client.
- 6. LIMITATION OF LIABILITY. CLIENT AND CONSULTANT HAVE EVALUATED THE RISKS AND REWARDS ASSOCIATED WITH THIS PROJECT, INCLUDING CONSULTANT'S FEE RELATIVE TO THE RISKS ASSUMED, AND AGREE TO ALLOCATE CERTAIN OF THE ASSOCIATED RISKS. TO THE FULLEST EXTENT PERMITTED BY LAW, THE TOTAL AGGREGATE LIABILITY OF CONSULTANT (AND ITS RELATED CORPORATIONS AND EMPLOYEES) TO CLIENT AND THIRD PARTIES GRANTED RELIANCE IS LIMITED TO THE GREATER OF \$50,000 OR CONSULTANT'S FEE, FOR ANY AND ALL INJURIES, DAMAGES, CLAIMS, LOSSES, OR EXPENSES (INCLUDING ATTORNEY AND EXPERT FEES) ARISING OUT OF CONSULTANT'S SERVICES OR THIS AGREEMENT. PRIOR TO ACCEPTANCE OF THIS AGREEMENT AND UPON WRITTEN REQUEST FROM CLIENT, CONSULTANT MAY NEGOTIATE A HIGHER LIMITATION FOR ADDITIONAL CONSIDERATION IN THE FORM OF A SURCHARGE TO BE ADDED TO THE AMOUNT STATED IN THE COMPENSATION SECTION OF THE PROPOSAL. THIS LIMITATION SHALL APPLY REGARDLESS OF AVAILABLE PROFESSIONAL LIABILITY INSURANCE COVERAGE, CAUSE(S), OR THE THEORY OF LIABILITY, INCLUDING NEGLIGENCE, INDEMNITY, OR OTHER RECOVERY. THIS LIMITATION SHALL NOT APPLY TO THE EXTENT THE DAMAGE IS PAID UNDER CONSULTANT'S COMMERCIAL GENERAL LIABILITY POLICY.**
- 7. Indemnity/Statute of Limitations.** Consultant and Client shall indemnify and hold harmless the other and their respective employees from and against legal liability for claims, losses, damages, and expenses to the extent such claims, losses, damages, or expenses are legally determined to be caused by their negligent acts, errors, or omissions. In the event such claims, losses, damages, or expenses are legally determined to be caused by the joint or concurrent negligence of Consultant and Client, they shall be borne by each party in proportion to its own negligence under comparative fault principles. Neither party shall have a duty to defend the other party, and no duty to defend is hereby created by this indemnity provision and such duty is explicitly waived under this Agreement. Causes of action arising out of Consultant's Services or this Agreement regardless of cause(s) or the theory of liability, including negligence, indemnity or other recovery shall be deemed to have accrued and the applicable statute of limitations shall commence to run not later than the date of Consultant's substantial completion of Services on the project.
- 8. Warranty.** Consultant will perform the Services in a manner consistent with that level of care and skill ordinarily exercised by members of the profession currently practicing under similar conditions in the same locale. **EXCEPT FOR THE STANDARD OF CARE PREVIOUSLY STATED, CONSULTANT MAKES NO WARRANTIES OR GUARANTEES, EXPRESS OR IMPLIED, RELATING TO CONSULTANT'S SERVICES AND CONSULTANT DISCLAIMS ANY IMPLIED WARRANTIES OR WARRANTIES IMPOSED BY LAW, INCLUDING WARRANTIES OF MERCHANTABILITY AND FITNESS FOR A PARTICULAR PURPOSE.**
- 9. Insurance.** Consultant represents that it now carries, and will continue to carry: (i) workers' compensation insurance in accordance with the laws of the states having jurisdiction over Consultant's employees who are engaged in the Services, and employer's liability insurance (\$1,000,000); (ii) commercial general liability insurance (\$1,000,000 occ / \$2,000,000 agg); (iii) automobile liability insurance (\$1,000,000 B.I. and P.D. combined single limit); and (iv) professional liability insurance (\$1,000,000 claim / agg). Certificates of insurance will be provided upon request. Client and Consultant shall waive subrogation against the other party on all general liability and property coverage.

- 10. CONSEQUENTIAL DAMAGES.** NEITHER PARTY SHALL BE LIABLE TO THE OTHER FOR LOSS OF PROFITS OR REVENUE; LOSS OF USE OR OPPORTUNITY; LOSS OF GOOD WILL; COST OF SUBSTITUTE FACILITIES, GOODS, OR SERVICES; COST OF CAPITAL; OR FOR ANY SPECIAL, CONSEQUENTIAL, INDIRECT, PUNITIVE, OR EXEMPLARY DAMAGES.
- 11. Dispute Resolution.** Client shall not be entitled to assert a Claim against Consultant based on any theory of professional negligence unless and until Client has obtained the written opinion from a registered, independent, and reputable engineer, architect, or geologist that Consultant has violated the standard of care applicable to Consultant's performance of the Services. Client shall provide this opinion to Consultant and the parties shall endeavor to resolve the dispute within 30 days, after which Client may pursue its remedies at law. This Agreement shall be governed by and construed according to Kansas law.
- 12. Subsurface Explorations.** Subsurface conditions throughout the site may vary from those depicted on logs of discrete borings, test pits, or other exploratory services. Client understands Consultant's layout of boring and test locations is approximate and that Consultant may deviate a reasonable distance from those locations. Consultant will take reasonable precautions to reduce damage to the site when performing Services; however, Client accepts that invasive services such as drilling or sampling may damage or alter the site. Site restoration is not provided unless specifically included in the Services.
- 13. Testing and Observations.** Client understands that testing and observation are discrete sampling procedures, and that such procedures indicate conditions only at the depths, locations, and times the procedures were performed. Consultant will provide test results and opinions based on tests and field observations only for the work tested. Client understands that testing and observation are not continuous or exhaustive, and are conducted to reduce - not eliminate - project risk. Client shall cause all tests and inspections of the site, materials, and Services performed by Consultant to be timely and properly scheduled in order for the Services to be performed in accordance with the plans, specifications, contract documents, and Consultant's recommendations. No claims for loss or damage or injury shall be brought against Consultant by Client or any third party unless all tests and inspections have been so performed and Consultant's recommendations have been followed. Unless otherwise stated in the Proposal, Client assumes sole responsibility for determining whether the quantity and the nature of Services ordered by Client is adequate and sufficient for Client's intended purpose. Client is responsible (even if delegated to contractor) for requesting services, and notifying and scheduling Consultant so Consultant can perform these Services. Consultant is not responsible for damages caused by Services not performed due to a failure to request or schedule Consultant's Services. Consultant shall not be responsible for the quality and completeness of Client's contractor's work or their adherence to the project documents, and Consultant's performance of testing and observation services shall not relieve Client's contractor in any way from its responsibility for defects discovered in its work, or create a warranty or guarantee. Consultant will not supervise or direct the work performed by Client's contractor or its subcontractors and is not responsible for their means and methods. The extension of unit prices with quantities to establish a total estimated cost does not guarantee a maximum cost to complete the Services. The quantities, when given, are estimates based on contract documents and schedules made available at the time of the Proposal. Since schedule, performance, production, and charges are directed and/or controlled by others, any quantity extensions must be considered as estimated and not a guarantee of maximum cost.
- 14. Sample Disposition, Affected Materials, and Indemnity.** Samples are consumed in testing or disposed of upon completion of the testing procedures (unless stated otherwise in the Services). Client shall furnish or cause to be furnished to Consultant all documents and information known or available to Client that relate to the identity, location, quantity, nature, or characteristic of any hazardous waste, toxic, radioactive, or contaminated materials ("Affected Materials") at or near the site, and shall immediately transmit new, updated, or revised information as it becomes available. Client agrees that Consultant is not responsible for the disposition of Affected Materials unless specifically provided in the Services, and that Client is responsible for directing such disposition. In no event shall Consultant be required to sign a hazardous waste manifest or take title to any Affected Materials. Client shall have the obligation to make all spill or release notifications to appropriate governmental agencies. The Client agrees that Consultant neither created nor contributed to the creation or existence of any Affected Materials conditions at the site and Consultant shall not be responsible for any claims, losses, or damages allegedly arising out of Consultant's performance of Services hereunder, or for any claims against Consultant as a generator, disposer, or arranger of Affected Materials under federal, state, or local law or ordinance.
- 15. Ownership of Documents.** Work product, such as reports, logs, data, notes, or calculations, prepared by Consultant shall remain Consultant's property. Proprietary concepts, systems, and ideas developed during performance of the Services shall remain the sole property of Consultant. Files shall be maintained in general accordance with Consultant's document retention policies and practices.
- 16. Utilities.** Unless otherwise stated in the Proposal, Client shall provide the location and/or arrange for the marking of private utilities and subterranean structures. Consultant shall take reasonable precautions to avoid damage or injury to subterranean structures or utilities. Consultant shall not be responsible for damage to subterranean structures or utilities that are not called to Consultant's attention, are not correctly marked, including by a utility locate service, or are incorrectly shown on the plans furnished to Consultant.
- 17. Site Access and Safety.** Client shall secure all necessary site related approvals, permits, licenses, and consents necessary to commence and complete the Services and will execute any necessary site access agreement. Consultant will be responsible for supervision and site safety measures for its own employees, but shall not be responsible for the supervision or health and safety precautions for any other parties, including Client, Client's contractors, subcontractors, or other parties present at the site. In addition, Consultant retains the right to stop work without penalty at any time Consultant believes it is in the best interests of Consultant's employees or subcontractors to do so in order to reduce the risk of exposure to the coronavirus. Client agrees it will respond quickly to all requests for information made by Consultant related to Consultant's pre-task planning and risk assessment processes. Client acknowledges its responsibility for notifying Consultant of any circumstances that present a risk of exposure to the coronavirus or individuals who have tested positive for COVID-19 or are self-quarantining due to exhibiting symptoms associated with the coronavirus.

Consultant: Terracon Consultants, Inc.  
By:  Date: 5/5/2020  
Name/Title: Paul Koszarek / Department Manager  
Address: 9856 S 57th St  
Franklin, WI 53132-8680  
Phone: (414) 423-0255 Fax: (414) 423-0566  
Email: Paul.Koszarek@terracon.com

Client: EMCS, Inc.  
By: \_\_\_\_\_ Date: \_\_\_\_\_  
Name/Title: Cory Inman / Project Engineer  
Address: 1600 Aspen Commons, Suite 230  
Middleton, WI 53562  
Phone: (608) 827-8810 Fax: \_\_\_\_\_  
Email: CInman@emcsinc.com

## EXHIBIT A - PROJECT UNDERSTANDING

Our scope of services is based on our understanding of the project as described by EMCS, Inc. and the expected subsurface conditions as described below. We have not visited the project site to confirm the information provided. We request the design team verify this information prior to our initiation of field exploration activities.

### Site Location and Anticipated Conditions

Item	Description
Site Location	The project is located at existing bridge (WisDOT B-53-010) on County Road E (USH 14), which spans Marsh Creek, in Janesville, Rock County, Wisconsin. The approximate site latitude and longitude of the existing bridge is 42.7203, -89.0589.
Existing Improvements	USH 14 is a 2-lane rural road. The bridge is a single span bridge.
Site Access	It is anticipated that access with our truck mounted drill rig will be limited to one of the lanes and the other lane will be kept open for traffic.
Anticipated Conditions	Based on Terracon's experience with soils in the area, it is anticipated that silty sand and gravel soils and relatively shallow bedrock will likely be encountered for this project.

### Planned Construction

Item	Description
Information Provided	Email with RFP
Project Description	Replacement of existing bridge structures B-53-0385. The new bridge will be a single span bridge supported on abutments. The bridge may also include wingwall. The abutments and possible wing walls will likely be supported by driven piles.  Additional site work will include removal and replacement of the paved bridge approaches with a new asphalt and base course section. No widening of the existing approaches is anticipated.
Grading/Slopes	It is anticipated that finished grades of the bridges and bridge approaches will be within 1 foot of the existing roadway.

## EXHIBIT B - SCOPE OF SERVICES

Our proposed scope of services consists of field exploration, laboratory testing, and engineering/project delivery. These services are described in the following sections.

This proposal is based on performing two (2) borings at opposite sides of the bridge. The borings will be completed at opposite corners of the bridge. The borings are planned to a depth of 50 feet or refusal, whichever is shallower. A 5-foot rock core will be performed if auger refusal is experienced. It should be noted that this proposal is based on Terracon having authorization to perform the borings up to a depth of 60 feet if the required pile capacity is not achieved at least 10 feet or more above the planned 50-foot depth. If capacity is still not achieved after reaching A lane will be left open and will be controlled by flaggers, and advanced signage provided per the Manual for Uniform Traffic Control Devices (MUTCD).

### Field Exploration

The field exploration program consists of the following:

Number of Borings	Planned Boring Depth (feet) <sup>1</sup>	Planned Location
2	50 or auger refusal <sup>2</sup>	Opposite corners of bridge B-67-25

1. Below ground surface

2. Potential to go to 60 feet, costs have been calculated for the 60 foot depth but actual costs may be less if suitable soils are observed at 50 feet or auger refusal is observed less than 50 feet.

**Boring Layout and Elevations:** We use handheld GPS equipment to locate borings with an estimated horizontal accuracy of +/-20 feet. Field measurements from existing site features may be utilized. If available, approximate elevations are obtained by interpolation from a site specific, surveyed topographic map. It is required to have station, offset and elevation for our report. It is assumed that EMCS would provide these upon completion of our borings.

**Subsurface Exploration Procedures:** We advance soil borings with a truck-mounted drill rig using continuous flight augers (hollow stem) above the water table and rotary wash borings below. Four samples are obtained in the upper 10 feet of each boring. Soil sampling is typically performed using split-barrel sampling procedures. The SPT resistance values, also referred to as N-values, are indicated on the boring logs at the test depths. The samples are placed in appropriate containers, taken to our soil laboratory for testing, and classified by a geotechnical engineer. In addition, we observe and record groundwater levels during drilling and sampling.

Our exploration team prepares field boring logs as part of standard drilling operations including sampling depths, penetration distances, and other relevant sampling information. Field logs include visual classifications of materials encountered during drilling, and our interpretation of subsurface

## Proposal for Geotechnical Engineering Services

Project ID: 5334-00-00 – Marsh Creek Bridge Replacement ■ Rock County, WI

May 5, 2020 ■ Terracon Proposal No. P58205094



conditions between samples. Final boring logs, prepared from field logs, represent the geotechnical engineer's interpretation, and include modifications based on observations and laboratory tests.

**Property Disturbance:** We backfill borings with bentonite grout and then restore the pavement with quick set concrete (for borings performed within the roadway) after completion. Our services do not include repair of the site beyond backfilling our boreholes. Excess auger cuttings will be placed within the road right of way at least 100 feet from the bridge. Because backfill material often settles below the surface after a period, we recommend boreholes are checked periodically and backfilled, if necessary.

### Laboratory Testing

The project engineer reviews field data and assigns various laboratory tests to better understand the engineering properties of various soil strata. Exact types and number of tests cannot be defined until completion of field work. However, we will include the following as requested:

- Moisture content
- Hand Penetrometer (clay soils only)
- Grain Size Analysis to provide D50 and D90 values for scour analysis to be performed by others (1 per bridge)

Our laboratory testing program often includes examination of soil samples by an engineer. Based on the material's texture and plasticity, we describe and classify soil samples in accordance with the Unified Soil Classification System (USCS).

### Safety

Terracon is currently not aware of environmental concerns at this project site that would create health or safety hazards associated with our exploration program; thus, our scope considers standard OSHA Level D Personal Protection Equipment (PPE) appropriate. Our scope of services does not include environmental site assessment services, but identification of unusual or unnatural materials encountered while drilling will be noted on our logs and discussed in our report.

Exploration efforts require borings (and possibly excavations) into the subsurface, therefore Terracon complies with local regulations to request a utility location service through Digger's Hotline. We consult with the owner/client regarding potential utilities, or other unmarked underground hazards. Based upon the results of this consultation, we consider the need for alternative subsurface exploration methods, as the safety of our field crew is a priority.

Due to the borings being completed within the road right of way, it is not anticipated that privately owned utility lines will be present at the boring locations. Therefore, fees for private utility locator

## Proposal for Geotechnical Engineering Services

Project ID: 5334-00-00 – Marsh Creek Bridge Replacement ■ Rock County, WI

May 5, 2020 ■ Terracon Proposal No. P58205094



have not been included in this proposal. If information regarding the presence of private utility lines is known, it must be discussed with Terracon so that location of said utilities can be arranged.

**Site Access:** Terracon must be granted access to the site by the property owner. By acceptance of this proposal, without information to the contrary, we consider this as authorization to access the property for conducting field exploration in accordance with the scope of services.

## Engineering and Project Delivery

Results of our field and laboratory programs are evaluated by a professional engineer. The engineer develops a geotechnical site characterization, performs the engineering calculations necessary to evaluate foundation alternatives, and develops appropriate geotechnical engineering design criteria for earth-related phases of the project.

Your project is delivered using our **GeoReport** system. Upon initiation, we provide you and your design team the necessary link and password to access the website (if not previously registered). Each project includes a calendar to track the schedule, an interactive site map, a listing of team members, access to the project documents as they are uploaded to the site, and a collaboration portal. A typical delivery process includes three basic stages:

- Stage 1: Project Planning
- Stage 2: Site Characterization
- Stage 3: Geotechnical Engineering

When utilized, a collaboration portal documents communication, eliminating the need for long email threads. This collaborative effort allows prompt evaluation and discussion of options related to the design and associated benefits and risks of each option. With the ability to inform all parties as the work progresses, decisions and consensus can be reached faster. In some cases, only minimal uploads and collaboration will be required, because options for design and construction are limited or unnecessary. This is typically the case for uncomplicated projects with no anomalies found at the site.

When services are complete, we upload a printable version of our completed final geotechnical engineering report, including the professional engineer's seal and signature, which documents our services. Previous submittals, collaboration, and final report are maintained in our system indefinitely. This allows future reference and integration into subsequent aspects of our services, as the project goes through final design and construction.

The final geotechnical engineering report provides the following:

- Boring logs with field and laboratory data
- Stratification based on visual soil classification
- Groundwater levels observed during and after completion drilling



**Proposal for Geotechnical Engineering Services**

Project ID: 5334-00-00 – Marsh Creek Bridge Replacement ■ Rock County, WI

May 5, 2020 ■ Terracon Proposal No. P58205094



- Site and Boring location plans
- Subsurface exploration procedures
- Description of subsurface conditions
- Recommended pavement design parameters including Design Group Index, Soil Support Value and Modulus of subgrade reaction and Material Type
- Subgrade preparation/earthwork recommendations including stabilization of poor soils, if required
- Lateral earth pressures for wing walls, if required, depending on structure of choice
- Recommendations for support of new structure (abutments and wing walls) including bearing capacity and anticipated settlement for shallow foundation option, or load resistance factored design (LRFD) recommendations for deep foundations including 10.75-inch-diameter CIP Piles and 10x42 H-Piles.

**Proposal for Geotechnical Engineering Services**

Project ID: 5334-00-00 – Marsh Creek Bridge Replacement ■ Rock County, WI

May 5, 2020 ■ Terracon Proposal No. P58205094



**EXHIBIT C - COMPENSATION AND PROJECT SCHEDULE**

**Compensation**

a) For field coordination, geotechnical drilling services, geotechnical laboratory and reporting services subcontracted to Terracon Consultants, Inc., the CONSULTANT'S actual cost to Terracon Consultants, Inc., unit price basis, not to exceed **\$11,825** as detailed in the following table:

b) Geotechnical Services (performed by Terracon Consultants, Inc.)

Item	Quantity	Unit	Unit Cost	Total Cost
Standard Auger Borings, 0 to 20 feet (standard sampling intervals, 2 ½ feet to 10, then 5 feet after)	40	Ft	\$ 19.00	\$ 760.00
Standard Auger Borings, 20 to 40 feet (standard sampling intervals 5 feet)	40	Ft	\$22.00	\$ 880.00
Standard Auger Borings, 40 to 60 feet (standard sampling intervals 5 feet)	40	Ft	\$25.00	\$ 1,000.00
Rock Core – Setup, 5-foot core, unconfined compressive strength, and RQD and RMR76 properties (if necessary)	2	Each	\$600.00	\$ 1,200.00
750.00Traffic Control, 2 person flagging crew	1	Day	\$1,500.00	\$1,500.00
Traffic Control, signage	1	Days	\$100.00	\$ 100.00
Initial Mobilization/Demobilization	1	Each	\$575.00	\$ 575.00
Borehole Abandonment per WNDR Standards-Bentonite Grout	120	Ft	\$ 5.00	\$ 600.00
Pavement Patches	2	Ea	\$ 30.00	\$ 60.00
Clean Up/Cuttings to ROW, 100 feet from Bridge	2	Each	\$75.00	\$ 150.00
Project Management/Utility Clearance/Boring Layout	8	Each	\$125.00	\$1,000.00
Laboratory Testing (moistures/hand pens/mechanical analysis – D50 and D90 values)	1	LS	\$1,000.00	\$1,000.00
Engineering Report	1	Each	\$3,000.00	\$3,000.00
<b>Total</b>				<b>\$11,825.00</b>

Unless instructed otherwise, we will submit our invoice(s) to the address shown at the beginning of this proposal. If conditions are encountered that require scope of services revisions and/or result in higher fees, we will contact you for approval, prior to initiating services. A supplemental proposal stating the modified scope of services as well as its effect on our fee will be prepared. We will not proceed without your authorization, as evidenced by your signature on the *Supplemental Agreement for Services* form.

**Proposal for Geotechnical Engineering Services**

Project ID: 5334-00-00 – Marsh Creek Bridge Replacement ■ Rock County, WI

May 5, 2020 ■ Terracon Proposal No. P58205094



**Project Schedule**

We developed a schedule to complete the scope of services based upon our existing availability and understanding of your project schedule. However, this does not account for delays in field exploration beyond our control, such as weather conditions, permit delays, or lack of permission to access the boring locations. In the event the schedule provided is inconsistent with your needs, please contact us so we may consider alternatives.

<i>GeoReport</i> Stage	Posting Date from Notice to Proceed <sup>1, 2</sup>
Project Planning	4 days
Site Characterization	20 days
Geotechnical Engineering	30 days

1. Upon receipt of your notice to proceed we will activate the schedule component of our *GeoReport* website with specific, anticipated calendar dates for the three delivery points noted above as well as other pertinent events such as field exploration crews on-site, etc.
2. We will maintain a current calendar of activities within our *GeoReport* website. In the event of a need to modify the schedule, the schedule will be updated to maintain a current awareness of our plans for delivery.

**EXHIBIT D - SITE LOCATION and NEARBY GEOTECHNICAL DATA**

Project ID: 5334-00-00 – Marsh Creek Bridge Replacement ■ Rock County, Wisconsin  
May 5, 2020 ■ Terracon Proposal No. P58205094

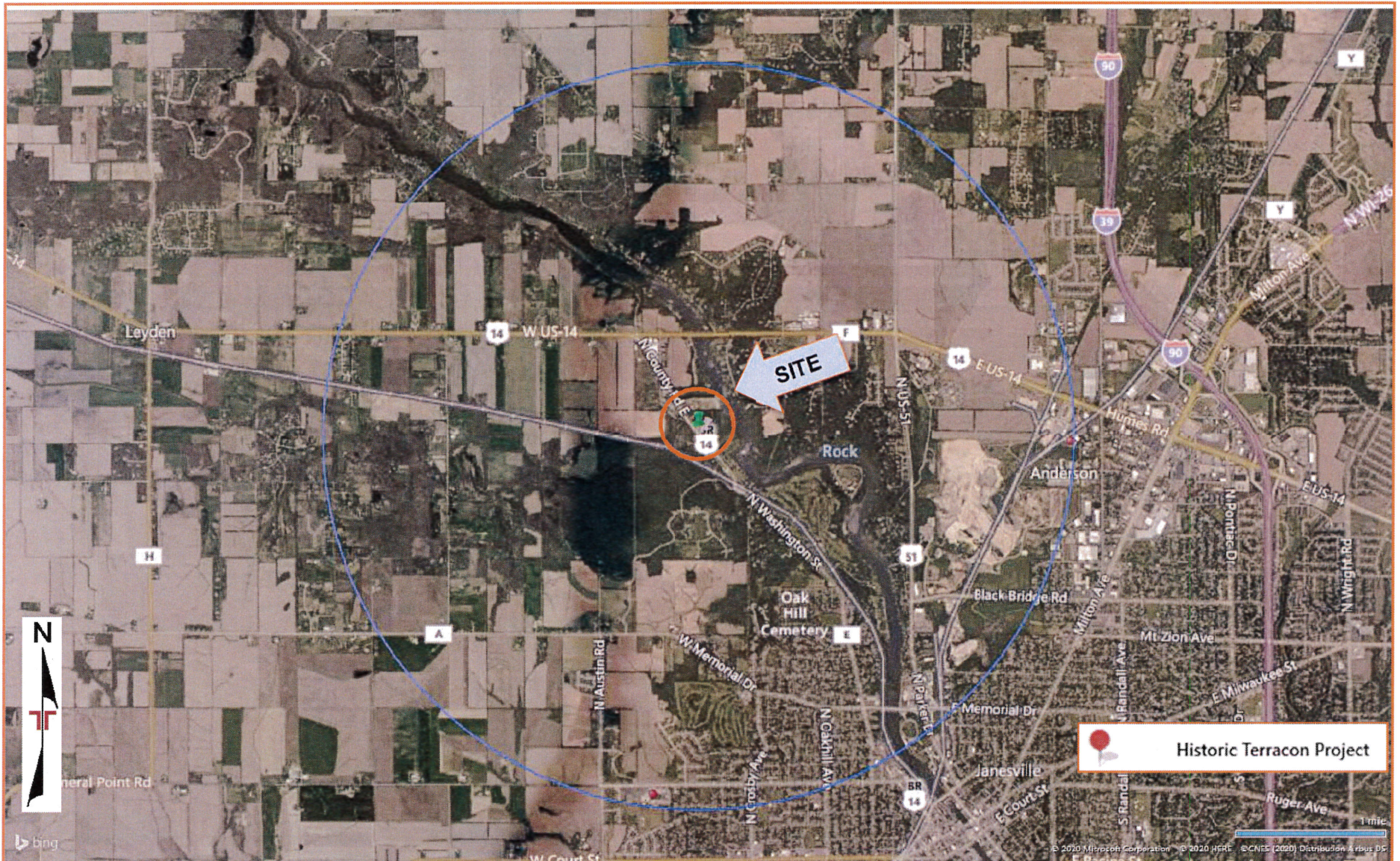


DIAGRAM IS FOR GENERAL LOCATION ONLY, AND IS NOT INTENDED FOR CONSTRUCTION PURPOSES

MAP PROVIDED BY MICROSOFT BING MAPS



5400 King James Way I Suite 200  
Madison, WI 53719  
608.663.1218  
Toll Free: 800.810.4012  
[www.klengineering.com](http://www.klengineering.com)

May 26, 2020

Cory Inman, P.E.  
EMCS, Inc.  
1600 Aspen Commons, Suite 230  
Middleton, WI 53562

RE: Proposal for Engineering Services  
Project ID 5334-00-00  
City of Janesville – USH 14  
Marsh Creek Bridge, B-53-0385  
CTH E, Rock County

Dear Cory:

KL Engineering, Inc. is pleased to provide you with this proposal for engineering services for the project referenced above. KL Engineering will provide hydrology and hydraulic design and provide portions of the hydraulic report for structure B-53-0385, Marsh Creek Bridge.

Total compensation for our services shall not exceed actual costs up to \$8,896.28, plus a fixed fee of \$606.39, up to a maximum combined amount of \$9,502.67. The summary of hours and expenses and computation of fees are attached to this proposal.

Chad Halverson will be the primary contact for all aspects of this proposal. You can reach him directly at (608) 663-1218 or [chalverson@klengineering.com](mailto:chalverson@klengineering.com). We appreciate the opportunity to submit this proposal and look forward to working with you on this project. Please contact me if you have questions or require additional information.

Sincerely,  
KL Engineering, Inc.

Aaron Steger, P.E.  
Vice President Engineering Services  
[asteger@klengineering.com](mailto:asteger@klengineering.com)

Chad Halverson, P.E.  
Senior Project Manager  
[chalverson@klengineering.com](mailto:chalverson@klengineering.com)

**Consultant Weighted Direct Labor Rates - KL Engineering, Inc.**

**Project:** 5334-00-00  
**Project Limits:** City of Janesville - USH 14  
**Highway:** Marsh Creek Bridge, B-53-0385  
**County:** CTH E, Rock County

**Classification:** **Project Manager**

Employee Number(a)	Current Rate(b)	Percent Contribution(c)	(b*c)
1714	\$51.75	100.00%	\$51.75
<b>TOTAL</b>		100.00%	\$51.75

**Classification:** **Project Engineer**

Employee Number(a)	Current Rate(b)	Percent Contribution(c)	(b*c)
1602	\$48.25	100.00%	\$48.25
<b>TOTAL</b>		100.00%	\$48.25

**Classification:** **Engineer**

Employee Number(a)	Current Rate(b)	Percent Contribution(c)	(b*c)
1823	\$30.15	100.00%	\$30.15
<b>TOTAL</b>		100.00%	\$30.15

**Classification:** **Clerical / Administration**

Employee Number(a)	Current Rate(b)	Percent Contribution(c)	(b*c)
0050	\$30.80	100.00%	\$30.80
<b>TOTAL</b>		100.00%	\$30.80

**KL ENGINEERING, INC.**

**Consultant Individual Direct Labor Rates - KL Engineering, Inc.**

**Project I.D.: 5334-00-00**

**Project Limits: City of Janesville - USH 14**

**Highway: Marsh Creek Bridge, B-53-0385**

**County: CTH E, Rock County**

Employee Name (a)	Classification (b)	Current Rate(c)	% Pay Increase (d)	New Pay Rate (e)	Date of Increase (f)	% Work at Current Rate (g)	% Work at Increased Rate (h)	Weighted Average Hourly Rate (i)
1714	Project Manager	\$51.75	2.60%	\$53.10	1/1/2021	100.00%	0.00%	\$51.75
1602	Project Engineer	\$48.25	2.50%	\$49.46	1/1/2021	100.00%	0.00%	\$48.25
1823	Engineer	\$30.15	2.60%	\$30.93	1/1/2021	100.00%	0.00%	\$30.15
0050	Clerical / Administration	\$30.80	2.60%	\$31.60	1/1/2021	100.00%	0.00%	\$30.80

**Contract Completion Date: 6/30/2022**

**KL ENGINEERING, INC.**

Project I.D.: 5334-00-00  
 Project Limits: City of Janesville - USH 14  
 Highway: Marsh Creek Bridge, B-53-0385  
 County: CTH E, Rock County

DATE: May 26, 2020

Estimate of Hours and Expenses - KL Engineering, Inc.

Activity Task		ESTIMATED PROJECT MANHOURS					MANHOURS PER TASK	EXPENSES
		Project Manager	Project Engineer	Engineer	Technician	Clerical / Administration		
<b>Total</b>		4	40	36	0	4	84	\$0.00
<b>Project Management</b>		4	0	0	0	4	8	0
<b>Scope, Schedule and Change Management</b>		0	0	0	0	0	0	0
<b>773</b>	<b>Manage Consultant Contract</b>							
773.1	Prepare consultant invoice and supporting documents	4	0	0	0	4	8	
	Subtotal - Acct Code 773	4	0	0	0	4	8	\$0.00
<b>Preliminary and Final Design</b>		0	40	36	0	0	76	0
<b>Structures</b>		0	40	36	0	0	76	0
<b>658</b>	<b>Design Structure Hydrology and Hydraulics</b>							
658.1	Hydrology Computations & Documentation	0	8	6	0	0	14	
658.2	Hydraulics Computations, Modeling & Report	0	32	30	0	0	62	
	Subtotal - Acct Code 658	0	40	36	0	0	76	\$0.00
<b>TOTAL</b>		4	40	36	0	4	84	0



**KL ENGINEERING, INC.**

**Summary of Staff Hours and Direct Labor Costs - KL Engineering, Inc.**

**PROJECT TOTAL**

**Project I.D.: 5334-00-00**

**Project Limits: City of Janesville - USH 14**

**Highway: Marsh Creek Bridge, B-53-0385**

**County: CTH E, Rock County**

Classification			Project Manager		Project Engineer		Engineer		Clerical / Administration		Total Direct Labor	
Avg. Hourly Wage			\$51.75		\$48.25		\$30.15		\$30.80			
Outline	Task	Activity Code	Hours	Dollars	Hours	Dollars	Hours	Dollars	Hours	Dollars	Hours	Dollars
1.2.3	Manage Consultant Contract	773	4	\$207.00	0	\$0.00	0	\$0.00	4	\$123.20	8	\$330.20
2.5.6	Design Structure Hydrology and Hydraulics	658	0	\$0.00	40	\$1,930.00	36	\$1,085.40	0	\$0.00	76	\$3,015.40
<b>TOTAL:</b>			4	\$207.00	40	\$1,930.00	36	\$1,085.40	4	\$123.20	84	\$3,345.60

**KL ENGINEERING, INC.**

**Fee Computation Summary by Engineering Task - KL Engineering, Inc.**

**PROJECT TOTAL**

**Project I.D.: 5334-00-00**  
**Project Limits: City of Janesville - USH 14**  
**Highway: Marsh Creek Bridge, B-53-0385**  
**County: CTH E, Rock County**

Outline	Task	Activity Code	Direct Labor Costs	Indirect Costs	Fixed Fee*	Direct Expenses	Total
1.2.3	Manage Consultant Contract	773	\$330.20	\$547.83	\$59.85	\$0.00	\$937.88
2.5.6	Design Structure Hydrology and Hydraulics	658	\$3,015.40	\$5,002.85	\$546.54	\$0.00	\$8,564.79
<b>TOTAL:</b>			<b>\$3,345.60</b>	<b>\$5,550.68</b>	<b>\$606.39</b>	<b>\$0.00</b>	<b>\$9,502.67</b>

Home Office Indirect Cost Rate:

1.6591

Fixed Fee %:

7.25%

\*Fixed Fee calculated using 1.5 multiplier

**KL ENGINEERING, INC.**

**Consultant Contract Total Fee Computation - KL Engineering, Inc.**

**Project I.D.: 5334-00-00**  
**Project Limits: City of Janesville - USH 14**  
**Highway: Marsh Creek Bridge, B-53-0385**  
**County: CTH E, Rock County**

<b>Project ID</b>	5334-00-00				<b>Total for Contract</b>
<b>Number of Staff Hours</b>	84				84
<b>Total Direct Labor</b>	\$3,345.60				\$3,345.60
<b>Total Indirect Costs</b>	\$5,550.68				\$5,550.68
<b>Fixed Fee*</b>	\$606.39				\$606.39
<b>Direct Expenses</b>	\$0.00				\$0.00
<b>TOTAL COST:</b>	<b>\$9,502.67</b>	<b>\$0.00</b>	<b>\$0.00</b>	<b>\$0.00</b>	<b>\$9,502.67</b>

**Home Office Indirect Cost Rate:** 1.6591

**Fixed Fee %:** 7.25%

\*Fixed Fee calculated using 1.5 multiplier

# SIGN LICENSE AGREEMENT

This LICENSE AGREEMENT is entered into between the City of Milton, a municipal corporation (hereinafter called Milton) and the County of Rock, Rock County, Wisconsin (hereinafter called County).

## RECITALS:

WHEREAS, the County is the owner of the right-of-way of S. John Paul Rd. in the Town of Milton, Wisconsin located to the southwest of the intersection of W. High St. and S. John Paul Rd.; and

WHEREAS, Milton desires to install a welcome sign within the Eastern right-of-way of S. John Paul Rd. in the Town of Milton, Wisconsin approximately 150 feet southwest of the intersection of W. High St. and S. John Paul Rd.; and

WHEREAS, Milton has requested County to grant it a LICENSE AGREEMENT permit the construction, location and maintenance of a welcome sign within the Eastern right-of-way of S. John Paul Rd. in the Town of Milton, Wisconsin in the area approximately described above and County is willing to grant such LICENSE AGREEMENT to Milton on the terms and conditions hereinafter set forth.

NOW, THEREFORE, in consideration of the mutual covenants contained herein and other good and valuable consideration, receipt of which is acknowledged by the parties, the parties hereby agree as follows:

## SECTION 1: GRANT OF LICENSE AGREEMENT

County hereby grants to Milton a LICENSE AGREEMENT for one (1) sign to be located within the Eastern right-of-way of S. John Paul Rd. in the area described in Exhibit A attached hereto.

## SECTION 2: PURPOSE AND RESPONSIBILITIES DEFINED

1. The use of the LICENSE AGREEMENT shall be limited to the installation and maintenance of one sign within the area described in Exhibit A. The initial installation and any future replacement of the sign shall be completed in a manner so as to not damage the ditch of the eastern right-of-way of S. John Paul Rd. or create a hazard to the traveling public.
2. Milton shall be responsible for the erection, installation and maintenance of the sign. The sign and licensed area shall be maintained in conformity with the requirements of Section 78-2021 through 78-2025 of the Code of Ordinances of the City of Milton.
3. If removal of the sign is required by the County for purposes of the reconstruction of S. John Paul Rd., Milton agrees, at its expense, to remove the sign or relocate the sign to another location within the right-of-way of S. John Paul Road that is mutually agreeable to County and Milton.
4. Milton shall be responsible for and shall hold County harmless from any and all damage to said sign including, but not limited to, any and all damage which may result from the future construction, installation, repair and/or maintenance of S. John Paul Rd. and/or the ditches, drainage ways, culverts, bridges or other improvements located within or adjacent to such public rights-of-way by County and/or their employees, agents or any other person or entity performing services on behalf of County.

Return to:

Rock County Dept of Public Works  
3715 Newville Road  
Janesville, WI 53545

Parcel Identification Number/Tax Key Number

10/30/19

5. Milton shall be responsible for any and all costs incurred with the removal and/or relocation of said sign including, but not limited to, the complete restoration of that portion of the right-of-way of S. John Paul Rd. damaged by the removal of the sign.

6. Milton shall be required to obtain a permit to work in the right-of-way from County for any work related to the sign including, but not limited to installation, maintenance or removal of the sign. The requirement for a permit does not, however, apply to maintenance of the easement area not involving the sign itself.

7. No interest in the land within the S. John Paul Rd. right-of-way is to be conveyed, now or in the future, by this LICENSE AGREEMENT.

### **SECTION 3: CONSIDERATION**

The consideration for the granting of this LICENSE AGREEMENT is the covenants and conditions contained herein, and no payment of money shall be required by Milton to County for this grant.

Milton shall be responsible for all applicable recording fees associated with recording this LICENSE AGREEMENT in the Office of the Register of Deeds for Rock County, Wisconsin.

### **SECTION 4: LICENSE AGREEMENT TO RUN WITH THE LAND**

All of the terms and conditions in this LICENSE AGREEMENT, including the benefits and burdens, shall run with the land and shall be binding upon, inure to the benefit of, and be enforceable by Milton and County.

### **SECTION 5: TERMINATION**

This LICENSE AGREEMENT may be terminated by County at any time due to breach of the terms of this agreement by Milton, or in the event another location for the sign cannot be mutually agreed to by the parties pursuant to Section 2, Paragraph 3 of this LICENSE AGREEMENT. County shall be required to give not less than 60 days advance written notice to Milton of its intent to terminate this LICENSE AGREEMENT. In the event of such termination, County will prepare a document canceling this LICENSE AGREEMENT.

If termination is caused by a breach of the terms of this agreement by Milton, it will be responsible for applicable recording fees associated with recording the termination of this LICENSE AGREEMENT the Office of the Register of Deeds for Rock County, Wisconsin.

If termination is requested by County for reasons other than a breach of this agreement by Milton, County will be responsible for applicable recording fees associated with recording the termination of this LICENSE AGREEMENT in the Office of the Register of Deeds for Rock County, Wisconsin.

### **SECTION 6: GENERAL PROVISIONS**

1. All notices to either party to this LICENSE AGREEMENT shall be delivered in person or sent by mail, postage prepaid, to the other party at that party's last known address. Either party may change its address for notice by providing written notice to the other party.

2. This LICENSE AGREEMENT shall be construed and enforced in accordance with the internal laws of the State of Wisconsin.

3. This LICENSE AGREEMENT sets forth the entire understanding of the parties and may not be changed except by a written document executed and acknowledged by all parties to this LICENSE AGREEMENT and then duly recorded in the office of the Register of Deeds for Rock County, Wisconsin.

4. If any term or condition of this LICENSE AGREEMENT, or the application of this LICENSE AGREEMENT to any person or circumstance, shall be deemed invalid or unenforceable, the remainder of this LICENSE AGREEMENT, or the application of the term or condition to persons or circumstances other than those to which it is held invalid or unenforceable, shall not be affected thereby, and each term and condition shall be valid and enforceable to the fullest extent permitted by law.

5. No delay or omission by any party in exercising any right or power arising out of any default under any of the terms or conditions of this LICENSE AGREEMENT shall be construed to be a waiver of the right or power. A waiver by a party of any of the obligations of the other party shall not be construed to be a waiver of any breach of any other terms and conditions of this LICENSE AGREEMENT.

6. In the event of a cause of action by a third party challenging the validity or enforceability of this LICENSE AGREEMENT or any of its provisions, the COUNTY and Milton shall cooperative fully with each other to defend the LICENSE AGREEMENT. No settlement of any such action shall be permitted without the written approval of all parties.

DATED this \_\_\_\_\_ day of \_\_\_\_\_, 2019.

**CITY OF MILTON**

By: \_\_\_\_\_  
Anissa Welch, Mayor

Attest:

By: \_\_\_\_\_  
Leanne Schroeder, City Clerk

Subscribed and sworn to before me this  
\_\_\_\_\_ day of \_\_\_\_\_, 2019.

\_\_\_\_\_  
Notary Public, \_\_\_\_\_ County, WI  
My Notary is Permanent/Expires: \_\_\_\_\_

DATED this \_\_\_\_ day of \_\_\_\_\_, 2019.

**ROCK COUNTY**

By: \_\_\_\_\_

\_\_\_\_\_  
Rock County Director of Public Works

Subscribed and sworn to before me this  
\_\_\_\_ day of \_\_\_\_\_, 2019.

\_\_\_\_\_  
Notary Public, \_\_\_\_\_ County, WI  
My Notary is Permanent/Expires: \_\_\_\_\_

**This Instrument was Drafted by:**

Attorney Mark A. Schroeder  
Consigny Law Firm, S.C.  
303 East Court Street  
Janesville, WI 53545

Attorney Richard Greenlee  
Rock County Corporation Counsel  
51 South Main Street  
Janesville, WI 53545

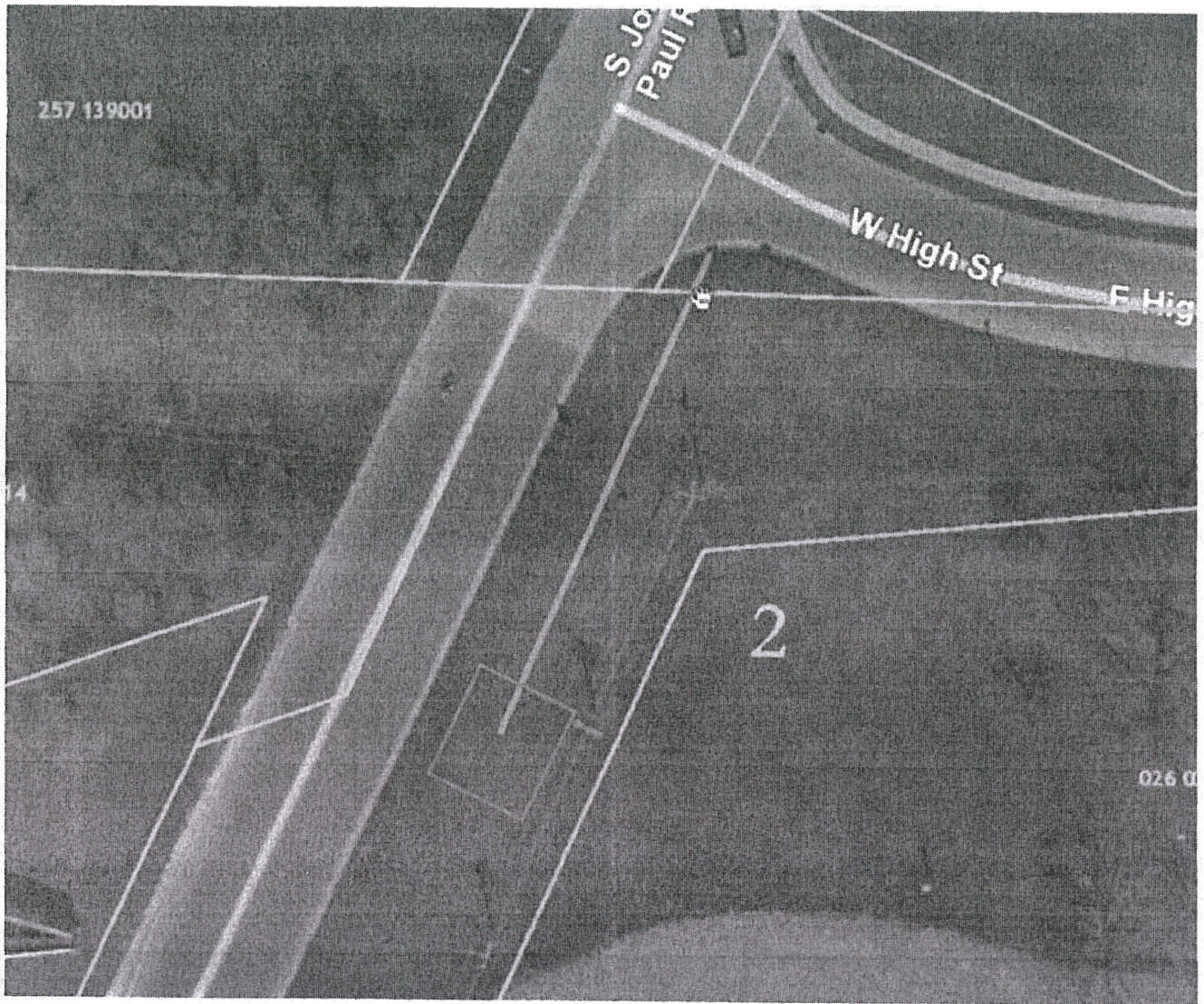
## **EXHIBIT A – LEGAL DESCRIPTION**

The property to which this Sign License Agreement applies is described as follows:

That portion of the Eastern right-of-way of S. John Paul Rd. located adjacent to the western boundary of Lot 2 of Certified Survey Map, recorded November 10, 2015, in Volume 37, Pages 95, 96, 97, 98 and 99, of Certified Survey Maps of Rock County, Wisconsin, as Document No. 2039824, being part of the NW ¼ of the NE ¼ of Section 33, T.4N., R13E. of the 4<sup>th</sup> PM., Town of Milton, Rock County, Wisconsin, consisting of an area 25 feet X 25 feet, the western boundary of which is approximately 18 feet East of the eastern curb line of S. John Paul Rd. and the northern boundary of which is approximately 150 feet southwest of the southern curb line of the intersection of W. High St. and S. John Paul Rd.

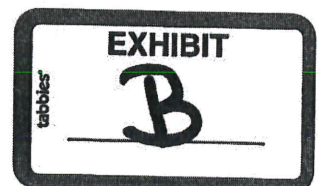
For a graphical representation of the licensed area, see **Exhibit B.**





The red box represents the licensed area.

Viewers are advised to ignore the illegible text on this map. It is presented to show spatial relationships only.  
Authorized by *Mrs. A. Schroeder*



Rock County Department of Public Works  
Division of Highways – Issue Paper  
Bid Number: DPW-2019-4

**ISSUE:** Purchase of one (1) Side Mount Mower

**DISCUSSION:** Due to the discontinuation of the mechanical driven side mount mowers manufactured by Woods Equipment, a quote for a new unit is currently unavailable. In an effort to explore alternative options for this style of mower, we have tried to demo a Rhino AG mechanical side mount and a Woods Equipment hydraulic side mount. A demo was not available for either. A Rhino AG side mount mower was purchased in 2019. We have had ongoing issues with that mower and it is currently down for a third time with a broken pivot shaft. The latest version of the Woods hydraulic mower has not been observed. Past experience with these, provided an overheating issue which inhibited our ability to complete mowing efforts in a timely manner. This issue may have been resolved, but we were not able to demo it therefore cannot verify.

DPW has ## Woods Equipment S106 side mount mowers. Parts are readily available and our staff has experience with this model.

In the future, DPW will need to continue considering alternative options. For now, it is preferred to acquire this unit given our past successes with them.

<b><u>Company</u></b> <b><u>Price</u></b>	<b><u>Manufacture</u></b>	<b><u>Year</u></b>	<b><u>Model</u></b>	<b><u>Hours</u></b>	<b><u>Bid</u></b>
Sigel Equipment	Woods Equipment	2015	S106	Used	\$7,600.00

**RECOMMENDATIONS:**

This quote meets our specifications for a side mount mower. I recommend the purchase of two (2) side mount mowers from Sigel Equipment for a cost of \$7,600.00

Respectfully submitted,



Duane Jorgenson, Director of Public Works



---

## ROCK COUNTY DEPARTMENT OF PUBLIC WORKS

# MEMORANDUM

---

**DATE:** June 15, 2020

**TO:** Rock County Public Works Committee

**FROM:** Duane Jorgenson, Director of Public Works

**RE:** Semi-Annual Report – Attendance at Conventions/Conferences that Exceed \$1,000 per Employee per Event

---

Resolution 06-9A-087 requires each department head to report semi-annually all instances of attendances at all training, conventions and conferences that exceed costs of \$1,000 per event, per employee to their respective governing committee for informational purposes.

Please be advised the Department of Public Works had the following employees who attended a conference that exceeded \$1,000 per event, per employee during the first six months of 2020.

Parks Division: None

Highway Division: None

cc: Josh Smith  
Marilyn Bondehagen

**COMMITTEE REVIEW REPORT  
WITH DESCRIPTION**

FOR THE MONTH OF FEBRUARY 2020

Account Number	Account Name	PO#	Check Date	Vendor Name	Description	Inv/Enc Amt
41-4300-4328-67500	Right of Way		02/13/2020	DE GRUY III,THEOPHILE G	CTH A PARCEL 291-LANDSC/FENCE	7,975.00
<b>County Road Construction PROG TOTAL</b>						<b>7,975.00</b>

I have reviewed the preceding payments in the total amount of **\$7,975.00**

Date: Dept Head \_\_\_\_\_

Committee Chair \_\_\_\_\_

**COMMITTEE REVIEW REPORT  
WITH DESCRIPTION**

FOR THE MONTH OF FEBRUARY 2020

Account Number	Account Name	PO#	Check Date	Vendor Name	Description	Inv/Enc Amt
00-0000-0060-16110	GRAVEL MATERIALS		02/13/2020	JANESVILLE SAND AND GRAVEL CO	3523.4 TONS SAND	11,274.88
00-0000-0060-16120	CALCUIM CHLORIDE		02/27/2020	COMPASS MINERALS AMERICA INC	153.86 TN SALT	224,894.66
00-0000-0060-16130	SIGNS,POSTS & LU		02/13/2020	DECKER SUPPLY CO INC	SIGNS,POSTS & LUMBER	1,438.50
			02/13/2020	NORTH CENTRAL UTILITY OF WI LL	REPAIR PARTS & ACCESSORIES	61.44
00-0000-0060-16150	REPAIR PRTS & AC		02/13/2020	ARING EQUIPMENT CO INC	REPAIR PARTS & ACCESSORIES	127.14
			02/20/2020	BROOKS TRACTOR INC	REPAIR PARTS & ACCESSORIES	356.22
			02/20/2020	GRAYS INC	REPAIR PARTS & ACCESSORIES	1,264.00
			02/20/2020	J AND J BEARING AND TRUCK PART	REPAIR PARTS & ACCESSORIES	3,980.22
			02/20/2020	JOHNSON TRACTOR INC	REPAIR PARTS & ACCESSORIES	98.00
			02/13/2020	MADISON SPRING COMPANY	REPAIR PARTS & ACCESSORIES	3,925.39
			02/20/2020	MONROE TRUCK EQUIPMENT INC	REPAIR PARTS & ACCESSORIES	3,083.71
			02/13/2020	NORTHLAND EQUIPMENT CO INC	REPAIR PARTS & ACCESSORIES	1,078.69
			02/06/2020	SHERWIN INDUSTRIES INC	REPAIR PARTS & ACCESSORIES	43.02
			02/20/2020	GRAINGER	REPAIR PARTS & ACCESSORIES	505.91
			02/13/2020	WIEDENBECK INC	REPAIR PARTS & ACCESSORIES	2,541.45
			02/27/2020	MOTION INDUSTRIES INC	REPAIR PARTS & ACCESSORIES	1,275.46
			02/13/2020	BADGER TRUCK CENTER INC	REPAIR PARTS & ACCESSORIES	12,674.88
			02/27/2020	FERTILIZER DEALER SUPPLY	PARTS DISCOUNT	409.70
			02/13/2020	59 AND I90 TRUCKS AND PARTS IN	REPAIR PARTS & ACCESSORIES	1,600.00
			02/20/2020	ALTEC INDUSTRIES INC	REPAIR PARTS & ACCESSORIES	522.07
			02/20/2020	FORCE AMERICA INC	REPAIR PARTS & ACCESSORIES	6,001.60
			02/20/2020	NAPA AUTO PARTS	REPAIR PARTS & ACCESSORIES	1,569.70
			02/20/2020	MADISON TRUCK SALES INC	REPAIR PARTS & ACCESSORIES	10,015.29
			02/20/2020	BOBCAT OF JANESVILLE	REPAIR PARTS & ACCESSORIES	2,293.59
			02/06/2020	TRUCK COUNTRY OF WISCONSIN	REPAIR PARTS & ACCESSORIES	27.98
			02/20/2020	KIMBALL MIDWEST	REPAIR PARTS & ACCESSORIES	1,035.84
			02/13/2020	LAKESIDE INTERNATIONAL TRUCKS	REPAIR PARTS & ACCESSORIES	24,637.70
			02/27/2020	AMERICAN INDUSTRIAL STEEL AND	PARTS	67.98
			02/20/2020	WAUSAU EQUIPMENT COMPANY INC	REPAIR PARTS & ACCESSORIES	3,477.00

**COMMITTEE REVIEW REPORT  
WITH DESCRIPTION**

FOR THE MONTH OF FEBRUARY 2020

Account Number	Account Name	PO#	Check Date	Vendor Name	Description	Inv/Enc Amt
			02/13/2020	JAMAR TECHNOLOGIES INC	REPAIR PARTS & ACCESSORIES	1,819.60
			02/20/2020	AUTOWARES INC	REPAIR PARTS & ACCESSORIES	254.80
			02/27/2020	PRECISE MRM LLC	REPAIR PARTS & ACCESSORIES	7,840.49
			02/13/2020	WEX BANK	MISC EXPENSES	424.46
			02/13/2020	POWER BUROW PRODUCTS	REPAIR PARTS & ACCESSORIES	1,344.46
			02/13/2020	JFTCO INC	REPAIR PARTS & ACCESSORIES	18,143.79
			02/13/2020	INTERSTATE POWER SYSTEMS INC	REPAIR PARTS & ACCESSORIES	2,631.90
			02/13/2020	NORTH CENTRAL UTILITY OF WI LL	REPAIR PARTS & ACCESSORIES	3,069.56
			02/20/2020	MOTION AND CONTROL ENTERPRISES	REPAIR PARTS & ACCESSORIES	4,610.23
			02/13/2020	ISTATE TRUCK CENTER	REPAIR PARTS & ACCESSORIES	1,139.16
			02/13/2020	EMERGENCY LIGHTING AND ELECTRO	REPAIR PARTS & ACCESSORIES	252.00
			02/20/2020	BOB CLAPPER AUTOMOTIVE INC	REPAIR PARTS & ACCESSORIES	180.60
			02/06/2020	MULTIQUIP INC	REPAIR PARTS & ACCESSORIES	3,618.94
		P2000661	02/20/2020	US BANK	ROLLER CHAIN/TUBE FOR 552	208.88
00-0000-0060-16160	TIRES		02/13/2020	POMPS TIRE SERVICE INC	TIRES	1,817.08
			02/20/2020	GOODYEAR COMMERCIAL TIRE AND S	TIRES	697.12
00-0000-0060-16170	BATTERIES		02/13/2020	INTERSTATE BATTERIES OF ROCKFO	BATTERIES	243.61
00-0000-0060-16180	IRON & STEEL		02/13/2020	WIEDENBECK INC	IRON & STEEL	71.83
00-0000-0060-16190	GASOLINE		02/13/2020	WEX BANK	GASOLINE	22,653.32
00-0000-0060-16200	DIESEL FUEL		02/27/2020	BROWN OIL CO INC	JANUARY 180 GALLONS	8,486.50
			02/13/2020	WEX BANK	DIESEL FUEL	64,776.96
00-0000-0060-16230	LUBE & OIL		02/13/2020	KELLEY WILLIAMSON CO	ANTI	6,374.90
			02/20/2020	NAPA AUTO PARTS	LUBE & OIL	90.32
			02/20/2020	BOBCAT OF JANESVILLE	HYDRAULIC FLUID	261.60
00-0000-0060-16350	COLD MIX ASPHALT		02/27/2020	WAUKESHA LIME AND STONE	59.36 TN SILVEX	8,013.60
00-0000-0060-16599	SERVICE REPAIRS		02/13/2020	GORDIE BOUCHER FORD LINCOLN ME	SERVICE #81	909.69

**COMMITTEE REVIEW REPORT  
WITH DESCRIPTION**

FOR THE MONTH OF FEBRUARY 2020

Account Number	Account Name	PO#	Check Date	Vendor Name	Description	Inv/Enc Amt
			02/13/2020	NORTHLAND EQUIPMENT CO INC	SERVICE REPAIR MP 32	1,268.27
			02/13/2020	POMPS TIRE SERVICE INC	SERVICE #79	2,162.33
			02/13/2020	WISCONSIN LIFT TRUCK CORP	SERVICE #522	672.50
			02/13/2020	WURTZ SERVICE CENTER INC	SERVICE REPAIRS MP 63	135.00
			02/20/2020	DEWEYS SERVICE INC	TOWING 165	1,155.00
			02/13/2020	CENTERWAY AUTO REPAIR INC	SERVICE #106	2,467.23
			02/06/2020	TRUCK COUNTRY OF WISCONSIN	SEVICE REPAIRS	639.91
			02/27/2020	GLASSWORKS OF WISCONSIN INC	GLASS REPLACE UNIT 1056	1,390.00
			02/13/2020	LAKESIDE INTERNATIONAL TRUCKS	SEVICE REPAIRS	1,284.04
			02/27/2020	J AND D CAR CARE LLC	RUSTPROOF/BED LINER UNIT 85	2,569.90
			02/13/2020	AT AND T MOBILITY	WIRELESS	240.54
			02/27/2020	I90 ENTERPRISES TOWING AND TRA	COVER/TOOL BOX UNIT 84	920.00
			02/13/2020	JFTCO INC	SEVICE REPAIRS	165.79
			02/13/2020	BURTNESS CHEVROLET INC	SERVICE #39	114.98
<b>ISF-HWY PROG TOTAL</b>						<b>495,402.91</b>

**COMMITTEE REVIEW REPORT  
WITH DESCRIPTION**  
FOR THE MONTH OF FEBRUARY 2020

<b>Account Number</b>	<b>Account Name</b>	<b>PO#</b>	<b>Check Date</b>	<b>Vendor Name</b>	<b>Description</b>	<b>Inv/Enc Amt</b>
-----------------------	---------------------	------------	-------------------	--------------------	--------------------	--------------------

---

I have reviewed the preceding payments in the total amount of **\$495,402.91**

Date: \_\_\_\_\_ Dept Head \_\_\_\_\_

Committee Chair \_\_\_\_\_



**COMMITTEE REVIEW REPORT  
WITH DESCRIPTION  
FOR THE MONTH OF FEBRUARY 2020**

Account Number	Account Name	PO#	Check Date	Vendor Name	Description	Inv/Enc Amt
41-4020-4321-64900	Other Expenses		02/20/2020	CITY OF JANESVILLE	LANDFILL 01/2020	80.00
<b>T-LaPrairie Routine Maint PROG TOTAL</b>						<b>80.00</b>
41-4030-4321-63701	Stone & Gravel		02/27/2020	RYAN FARM QUARRIES	DISCOUNT GRAVEL	105.00
<b>T-Plymouth Routine Maintenance PROG TOTAL</b>						<b>105.00</b>
41-4034-4321-64900	Other Expenses		02/20/2020	CITY OF JANESVILLE	LANDFILL 01/2020	12.00
			02/20/2020	UNIVERSAL RECYCLING TECHNOLOGI	TV RECYCLING	34.38
<b>T-Rock Routine Maintenance PROG TOTAL</b>						<b>46.38</b>
41-4290-4290-63599	Sundry Items	P2000661	02/20/2020	US BANK	RECAP AND 12035/12044	197.93
<b>Motor Pool Operations PROG TOTAL</b>						<b>197.93</b>
41-4300-4110-63100	Office&Misc Exp		02/06/2020	LOCKS AND UNLOCKS INC	VAULT SERVICE	185.00
		P2000661	02/20/2020	US BANK	MD NOTARY	340.45
41-4300-4110-64200	Training	P2000661	02/20/2020	US BANK	DJ TRAINING CHULA VISTA	452.98
41-4300-4110-64911	Clearing Acct	P2000661	02/20/2020	US BANK	LIC FOR 84 & 85	355.98
<b>County Highway Administration PROG TOTAL</b>						<b>1,334.41</b>
41-4300-4130-62189	Other Medical		02/06/2020	OCCUPATIONAL HEALTH CENTERS	ANNUAL CONSORTIUM	400.00
<b>Drug &amp; Alcohol Compliance PROG TOTAL</b>						<b>400.00</b>
41-4300-4191-64200	Training	P2000661	02/20/2020	US BANK	SUPERVISION TRAINING EXP	460.00

**COMMITTEE REVIEW REPORT  
WITH DESCRIPTION  
FOR THE MONTH OF FEBRUARY 2020**

Account Number	Account Name	PO#	Check Date	Vendor Name	Description	Inv/Enc Amt
<b>County Highway Supervision PROG TOTAL</b>						<b>460.00</b>
41-4300-4192-62210	Telephone		02/13/2020	PRECISE MRM LLC	Telephone	3,159.00
<b>County Highway Radio Maint PROG TOTAL</b>						<b>3,159.00</b>
41-4300-4321-62201	Electric		02/27/2020	ALLIANT ENERGY/WP&L	CTH X & HART RD ROUNDABOUT	113.19
			02/20/2020	ROCK ENERGY COOPERATIVE	JANUARY	13.79
41-4300-4321-64200	Training		02/13/2020	CATERPILLAR PAVING PRODUCTS IN	PAVER TRAINING SCHOOL	1,200.00
		P2000661	02/20/2020	US BANK	CTH MAINT TRAINING EXP	1,389.28
41-4300-4321-64900	Other Expenses		02/20/2020	CITY OF JANESVILLE	LANDFILL 01/2020	32.00
			02/06/2020	WESTPHAL AND COMPANY INC	REPAIR SIGNAL AT CTH G & TWNLI	318.04
			02/20/2020	PACVAN INC	STORAGE CONTAINER	7,850.00
<b>County Highway Routine Maint PROG TOTAL</b>						<b>10,916.30</b>
41-4300-4325-64918	Marketing		02/20/2020	ADAMS PUBLISHING GROUP OF SOUT	Marketing & Promotion	69.29
<b>County Highway Seal Coating PROG TOTAL</b>						<b>69.29</b>
41-4300-4328-62119	Other Services		02/27/2020	MSA PROFESSIONAL SERVICES INC	CTH A PHASE II A&N PYMT 7	5,615.00
41-4300-4328-64918	Marketing		02/20/2020	ADAMS PUBLISHING GROUP OF SOUT	Marketing & Promotion	144.43
<b>County Road Construction PROG TOTAL</b>						<b>5,759.43</b>
41-4310-4701-64900	Other Expenses		02/13/2020	PRECISE MRM LLC	AVL GPS	594.00
<b>State Maint AFE 0053-01-01 PROG TOTAL</b>						<b>594.00</b>
41-4310-4711-64900	Other Expenses					

**COMMITTEE REVIEW REPORT  
WITH DESCRIPTION  
FOR THE MONTH OF FEBRUARY 2020**

Account Number	Account Name	PO#	Check Date	Vendor Name	Description	Inv/Enc Amt
			02/06/2020	JEFFERSON COUNTY HIGHWAY COMMI	10000 GAL BRINE	1,484.00
			02/20/2020	BJ ELECTRIC SUPPLY INC	BRINE TANK SERVICE	1,759.42
				<b>State Maint AFE 0053-01-11 PROG TOTAL</b>		<b>3,243.42</b>
41-4310-4712-64900	Other Expenses		02/27/2020	FERTILIZER DEALER SUPPLY	STATE BRINE TANKS	39,286.26
				<b>State Maint AFE 0053-01-12 PROG TOTAL</b>		<b>39,286.26</b>
41-4310-4721-64900	Other Expenses		02/20/2020	BADGER CONTRACTORS RENTAL AND	EPOXY	113.22
				<b>State Maint AFE 0053-01-21 PROG TOTAL</b>		<b>113.22</b>
41-4310-4733-64900	Other Expenses		02/20/2020	CITY OF JANESVILLE	LANDFILL 01/2020	61.00
				<b>State Maint AFE 0053-01-33 PROG TOTAL</b>		<b>61.00</b>
41-4310-4770-64900	Other Expenses		02/20/2020	CITY OF JANESVILLE	LANDFILL 01/2020	12.00
				<b>State Maint AFE 0077-01-00 PROG TOTAL</b>		<b>12.00</b>
41-4350-4210-61920	Physicals		02/27/2020	DEAN MEDICAL CENTER	HEALTH SCREENINGS	780.00
				<b>Cost Pools-Employee Benefits PROG TOTAL</b>		<b>780.00</b>
41-4350-4220-63602	Consumable Tools		02/20/2020	JOHNSON TRACTOR INC	Consumable Tools	753.49
			02/06/2020	MENARDS	Consumable Tools	274.74
			02/13/2020	WIEDENBECK INC	Consumable Tools	685.50
			02/27/2020	OLSEN SAFETY EQUIPMENT CORP	SAFETY SUPPLIES	1,003.64
			02/13/2020	ORFORDVILLE LUMBER CO	Consumable Tools	47.97
			02/13/2020	NORTH CENTRAL UTILITY OF WI LL	Consumable Tools	3,885.43

**COMMITTEE REVIEW REPORT  
WITH DESCRIPTION**

FOR THE MONTH OF FEBRUARY 2020

Account Number	Account Name	PO#	Check Date	Vendor Name	Description	Inv/Enc Amt
<b>Cost Pools-Field Small Tools PROG TOTAL</b>						<b>6,650.77</b>
41-4350-4230-62160	Cleaning Contrac	P2000644	02/20/2020	ALSCO INC	UNIFORMS	309.80
41-4350-4230-62164	Disposal Service		02/06/2020	SAFETY KLEEN SYSTEMS INC	WASTE ANTIFREEZE RECYCLING	250.00
			02/06/2020	LIBERTY TIRE RECYCLING LLC	TIRE RECYCLING	417.89
41-4350-4230-63400	Operating Supply		02/20/2020	J AND J BEARING AND TRUCK PART	Operating Supplies	135.00
			02/13/2020	KELLEY WILLIAMSON CO	Operating Supplies	1,420.17
			02/27/2020	MENARDS	Operating Supplies	117.16
			02/13/2020	GRAINGER	Operating Supplies	43.00
			02/13/2020	WIEDENBECK INC	Operating Supplies	1,144.91
			02/13/2020	ZEP MANUFACTURING CO	TRUCK WASH	999.98
			02/13/2020	FASTENAL COMPANY	CREDIT	68.30
			02/13/2020	ORFORDVILLE LUMBER CO	Operating Supplies	5.32
			02/27/2020	FIRST AYD CORPORATION	Operating Supplies	2,988.05
			02/20/2020	KIMBALL MIDWEST	Operating Supplies	1,030.11
			02/13/2020	LAKESIDE INTERNATIONAL TRUCKS	Operating Supplies	347.59
			02/27/2020	FIRST SUPPLY LLC-JANESVILLE	Operating Supplies	15.79
			02/13/2020	DEL CITY	Operating Supplies	67.36
			02/20/2020	AUTOWARES INC	Operating Supplies	276.45
			02/13/2020	INTERSTATE ALL BATTERY CENTER	Operating Supplies	35.88
		P2000644	02/20/2020	ALSCO INC	TOWELS	120.80
		P2000661	02/20/2020	US BANK	SAFETY SUPPLIES	852.85
41-4350-4230-63516	Welding Supplies		02/20/2020	WELDERS SUPPLY CO BELOIT INC	Welding Supplies	1,100.22
41-4350-4230-63602	Consumable Tools		02/20/2020	J AND J BEARING AND TRUCK PART	Consumable Tools	37.85
			02/06/2020	MC MASTER-CARR SUPPLY COMPANY	Consumable Tools	385.60
			02/06/2020	MENARDS	Consumable Tools	104.33
			02/13/2020	WIEDENBECK INC	Consumable Tools	335.27
			02/13/2020	DRAEGER TOOLS LLC	Consumable Tools	1,358.03

**COMMITTEE REVIEW REPORT  
WITH DESCRIPTION  
FOR THE MONTH OF FEBRUARY 2020**

Account Number	Account Name	PO#	Check Date	Vendor Name	Description	Inv/Enc Amt
			02/13/2020	AMP TOOLS LLC	Consumable Tools	89.25
		P2000661	02/20/2020	US BANK	BECKETT GAGE	15.74
<b>Cost Pools-Shop Operations PROG TOTAL</b>						<b>14,072.70</b>
<hr/>						
41-4350-4260-64918	Marketing		02/20/2020	ADAMS PUBLISHING GROUP OF SOUT	Marketing & Promotion	144.44
<b>Cost Pools-Bituminous Oper PROG TOTAL</b>						<b>144.44</b>
<hr/>						
41-4350-4265-64918	Marketing		02/20/2020	ADAMS PUBLISHING GROUP OF SOUT	Marketing & Promotion	69.29
<b>Seal Coating Operation PROG TOTAL</b>						<b>69.29</b>
<hr/>						
41-4350-4270-63500	R&M Supplies		02/20/2020	E AND D WATER WORKS INC	DRINKING WATER	103.50
		P2000644	02/20/2020	ALSCO INC	MATS	140.00
41-4350-4270-65335	Portable Toilet		02/27/2020	ACE PORTABLES INC	DPW PORTABLE TOILET RENTAL	374.70
<b>Cost Pools-Buildings/Grounds PROG TOTAL</b>						<b>618.20</b>
<hr/>						
41-4350-4271-62201	Electric		02/20/2020	ROCK ENERGY COOPERATIVE	JANUARY	162.20
41-4350-4271-63500	R&M Supplies		02/27/2020	MENARDS	11 SALT SHED REPAIR	596.88
<b>Cost Pools-Salt Shed Operation PROG TOTAL</b>						<b>759.08</b>
<hr/>						
41-4350-4280-67100	Equip >\$25,000		02/20/2020	JOHNSON TRACTOR INC	#4376	14,805.22
			02/20/2020	BOBCAT OF JANESVILLE	#524	70,300.00
			02/20/2020	DIAMOND MOWERS LLC	#451	28,789.00
			02/20/2020	JFTCO INC	#2019	172,000.00
			02/27/2020	NATIONAL AUTO FLEET GROUP	NEW UNIT 178/INCL EXT WARRANTY	245,554.00
			02/06/2020	EWALD MOTORS OF OCONOMOWOC LLC	NEW TRUCK 85	74,366.00

**COMMITTEE REVIEW REPORT  
WITH DESCRIPTION  
FOR THE MONTH OF FEBRUARY 2020**

Account Number	Account Name	PO#	Check Date	Vendor Name	Description	Inv/Enc Amt
<b>Cost Pools-Acquire Cap Assests PROG TOTAL</b>						<b>605,814.22</b>
41-4551-4082-62201	Electric		02/20/2020	ROCK ENERGY COOPERATIVE	JANUARY	29.68
<b>County Parks-Carver Roehl PROG TOTAL</b>						<b>29.68</b>
41-4551-4083-62201	Electric		02/20/2020	ROCK ENERGY COOPERATIVE	JANUARY	19.57
<b>County Parks-Gibbs Lake PROG TOTAL</b>						<b>19.57</b>
41-4551-4088-62201	Electric		02/20/2020	ROCK ENERGY COOPERATIVE	JANUARY	264.55
<b>County Parks-Beckman Mill PROG TOTAL</b>						<b>264.55</b>
41-4551-4090-62201	Electric		02/13/2020	ALLIANT ENERGY/WP&L	JANUARY	27.63
<b>County Parks-Royce Dallman PROG TOTAL</b>						<b>27.63</b>
41-4551-4091-62201	Electric		02/13/2020	ALLIANT ENERGY/WP&L	JANUARY	98.21
<b>County Parks-Sportsman PROG TOTAL</b>						<b>98.21</b>
41-4551-4093-62201	Electric		02/27/2020	ALLIANT ENERGY/WP&L	JANUARY	129.30
<b>County Parks-Sweet Allyn PROG TOTAL</b>						<b>129.30</b>
41-4551-4095-62164	Disposal Service	P2000259	02/20/2020	BADGERLAND DISPOSAL	FEBRUARY	222.38
41-4551-4095-64200	Training	P2000661	02/20/2020	US BANK	WPRA JH MEMBERSHIP	150.00
41-4551-4095-64900	Other Expenses	P2000294	02/27/2020	BJOIN LIMESTONE INC	2.63 TN 6-12" LIMESTONE	107.83
		P2000304	02/27/2020	MENARDS	PARKS 095 SUPPLIES	60.24

**COMMITTEE REVIEW REPORT  
WITH DESCRIPTION  
FOR THE MONTH OF FEBRUARY 2020**

Account Number	Account Name	PO#	Check Date	Vendor Name	Description	Inv/Enc Amt
		P2000357	02/27/2020	ACE PORTABLES INC	PARKS PORTABLE TOILET RENTAL	185.90
		P2000360	02/06/2020	BILLER PRESS AND MFG INC	YELLOW BOAT LAUNCH PERMITS	673.95
		P2000362	02/20/2020	FERRELLGAS LP	PROPANE	524.28
		P2000367	02/20/2020	ALSCO INC	UNIFORMS	61.60
		P2000661	02/20/2020	US BANK	SUPPLIES	999.52
		P2000854	02/13/2020	ROCK COUNTY 4H FAIR INC	ROCK COUNTY 4H FAIR BOOTH	100.00
<b>County Parks-General Maint PROG TOTAL</b>						<b>3,085.70</b>
41-4551-4102-62201	Electric		02/20/2020	ROCK ENERGY COOPERATIVE	JANUARY	67.65
41-4551-4102-64900	Other Expenses	P2000304	02/27/2020	MENARDS	TCP MISC SUPPLIES	194.57
<b>County Parks-Turtle Creek Pkwy PROG TOTAL</b>						<b>262.22</b>
41-4551-4110-62104	Consult Services	P1901975	02/06/2020	VANDEWALLE AND ASSOCIATES INC	PARKS OUTDOOR RECREATION AND O	14,540.25
41-4551-4110-64200	Training	P2000661	02/20/2020	US BANK	SAFETY COURSE NRPA	814.69
<b>County Parks-Administration PROG TOTAL</b>						<b>15,354.94</b>
41-4592-4599-69999	Non-Converted		02/27/2020	ROCK COUNTY ALLIANCE OF SNOWMO	2019-20 SNOWMOBILE CLUB EXP	9,680.20
<b>2019-20 Snowmobile Grant PROG TOTAL</b>						<b>9,680.20</b>
41-4592-4800-67200	Capitol Improve	P2000756	02/27/2020	MENARDS	PLUMBING SUPPLIES	1,664.54
<b>Parks Capital Projects PROG TOTAL</b>						<b>1,664.54</b>

**COMMITTEE REVIEW REPORT  
WITH DESCRIPTION**  
FOR THE MONTH OF FEBRUARY 2020

Account Number	Account Name	PO#	Check Date	Vendor Name	Description	Inv/Enc Amt
----------------	--------------	-----	------------	-------------	-------------	-------------

I have reviewed the preceding payments in the total amount of **\$725,362.88**

Date: \_\_\_\_\_ Dept Head \_\_\_\_\_

Committee Chair \_\_\_\_\_



**COMMITTEE REVIEW REPORT  
WITH DESCRIPTION**  
FOR THE MONTH OF FEBRUARY 2020

<b>Account Number</b>	<b>Account Name</b>	<b>PO#</b>	<b>Check Date</b>	<b>Vendor Name</b>	<b>Description</b>	<b>Inv/Enc Amt</b>
-----------------------	---------------------	------------	-------------------	--------------------	--------------------	--------------------

---

**REPORT COMPLETE!**

**Report Total: 1,228,740.79**

For Job Numbers: 2004218, 2007733, 2009696, 2011014, 2014815

**COMMITTEE REVIEW REPORT  
WITH DESCRIPTION**  
FOR THE MONTH OF MAY 2020

<b>Account Number</b>	<b>Account Name</b>	<b>PO#</b>	<b>Check Date</b>	<b>Vendor Name</b>	<b>Description</b>	<b>Inv/Enc Amt</b>
41-4300-4328-67500	Right of Way		05/28/2020	MCNALL,JACQUELINE F	CTH A PHASE II-PARCEL 264 TLE	11,525.00
<b>County Road Construction PROG TOTAL</b>						<b>11,525.00</b>

I have reviewed the preceding payments in the total amount of **\$11,525.00**

Date: Dept Head \_\_\_\_\_

Committee Chair \_\_\_\_\_

**COMMITTEE REVIEW REPORT  
WITH DESCRIPTION**

FOR THE MONTH OF MAY 2020

Account Number	Account Name	PO#	Check Date	Vendor Name	Description	Inv/Enc Amt
00-0000-0001-23040	SALES TAX DUE ST					
			05/07/2020	LARSON,DON	PARK RESERVATION REFUND	5.21
			05/07/2020	WOLFGRAM,CHRISTAL	PARK RESERVATION REFUND	7.82
<b>GENERAL FUND PROG TOTAL</b>						<b>13.03</b>
00-0000-0060-16130	SIGNS,POSTS & LU					
			05/21/2020	FASTENAL COMPANY	SIGNS,POSTS & LUMBER	541.80
00-0000-0060-16150	REPAIR PRTS & AC					
			05/21/2020	JOHNSON TRACTOR INC	REPAIR PARTS & ACCESSORIES	3,349.75
			05/14/2020	MONROE TRUCK EQUIPMENT INC	REPAIR PARTS & ACCESSORIES	1,886.25
			05/14/2020	NORTHLAND EQUIPMENT CO INC	REPAIR PARTS & ACCESSORIES	1,696.21
			05/14/2020	REINDERS INC	REPAIR PARTS & ACCESSORIES	90.53
			05/28/2020	GRAINGER	REPAIR PARTS & ACCESSORIES	198.28
			05/14/2020	WIEDENBECK INC	REPAIR PARTS & ACCESSORIES	61.50
			05/21/2020	BADGER TRUCK CENTER INC	REPAIR PARTS & ACCESSORIES	511.92
			05/14/2020	COMAC SIGNS AND DESIGNS	REPAIR PARTS & ACCESSORIES	1,200.00
			05/14/2020	TRIEBOLD IMPLEMENT INC	REPAIR PARTS & ACCESSORIES	782.79
			05/14/2020	NAPA AUTO PARTS	REPAIR PARTS & ACCESSORIES	695.27
			05/21/2020	MID STATE EQUIPMENT JANESVILLE	REPAIR PARTS & ACCESSORIES	889.74
			05/14/2020	BOBCAT OF JANESVILLE	REPAIR PARTS & ACCESSORIES	3,900.00
			05/14/2020	LAKESIDE INTERNATIONAL TRUCKS	REPAIR PARTS & ACCESSORIES	623.20
			05/28/2020	DEL CITY	REPAIR PARTS & ACCESSORIES	309.60
			05/21/2020	WAUSAU EQUIPMENT COMPANY INC	REPAIR PARTS & ACCESSORIES	2,125.73
			05/14/2020	RETRIEVER LLC	REPAIR PARTS & ACCESSORIES	170.00
			05/21/2020	WEX BANK	MISC EXPENSES	17.44
			05/14/2020	JFTCO INC	REPAIR PARTS & ACCESSORIES	202.62
			05/14/2020	NORTH CENTRAL UTILITY OF WI LL	REPAIR PARTS & ACCESSORIES	504.14
			05/14/2020	ISTATE TRUCK CENTER	REPAIR PARTS & ACCESSORIES	22.19
00-0000-0060-16160	TIRES					
			05/21/2020	GOODYEAR COMMERCIAL TIRE AND S	TIRES	3,685.08
00-0000-0060-16170	BATTERIES					
			05/14/2020	INTERSTATE BATTERIES OF ROCKFO	BATTERIES	478.47
00-0000-0060-16180	IRON & STEEL					

**COMMITTEE REVIEW REPORT  
WITH DESCRIPTION**

FOR THE MONTH OF MAY 2020

Account Number	Account Name	PO#	Check Date	Vendor Name	Description	Inv/Enc Amt
			05/28/2020	AMERICAN INDUSTRIAL STEEL AND	STEEL	408.60
00-0000-0060-16190	GASOLINE					
			05/21/2020	WEX BANK	GASOLINE	1,287.70
00-0000-0060-16200	DIESEL FUEL					
			05/28/2020	BROWN OIL CO INC	APRIL 620 GALLONS	2,254.00
			05/21/2020	WEX BANK	DIESEL FUEL	8,107.64
00-0000-0060-16350	COLD MIX ASPHALT					
			05/21/2020	PAYNE AND DOLAN INC	21.22 TN COLD MIX ASPHALT	3,183.00
00-0000-0060-16599	SERVICE REPAIRS					
			05/21/2020	DAVIS CITGO SERVICE INC	SERVICE MP 43	2,442.23
			05/14/2020	MONROE TRUCK EQUIPMENT INC	ADD ONS 1090	35,574.00
			05/14/2020	POMPS TIRE SERVICE INC	SERVICE UNIT 10	1,191.50
			05/28/2020	TOM PECK FORD INC.	SERVICE UNIT 80	42.64
			05/21/2020	MID STATE EQUIPMENT JANESVILLE	SERVICE UNIT 14	220.19
			05/14/2020	GLASSWORKS OF WISCONSIN INC	GLASS REPLACE 517	345.00
			05/14/2020	LAKESIDE INTERNATIONAL TRUCKS	SEVICE REPAIRS	7,965.78
			05/21/2020	AT AND T MOBILITY	WIRELESS APRIL	239.94
			05/14/2020	JFTCO INC	SERVICE 452	27.63
			05/14/2020	BURTNESS CHEVROLET INC	SERVICE 77	66.80
<b>ISF-HWY PROG TOTAL</b>						<b>87,299.16</b>

**COMMITTEE REVIEW REPORT  
WITH DESCRIPTION**  
FOR THE MONTH OF MAY 2020

<b>Account Number</b>	<b>Account Name</b>	<b>PO#</b>	<b>Check Date</b>	<b>Vendor Name</b>	<b>Description</b>	<b>Inv/Enc Amt</b>
-----------------------	---------------------	------------	-------------------	--------------------	--------------------	--------------------

---

I have reviewed the preceding payments in the total amount of **\$87,312.19**

Date: \_\_\_\_\_ Dept Head \_\_\_\_\_

Committee Chair \_\_\_\_\_

**COMMITTEE REVIEW REPORT  
WITH DESCRIPTION  
FOR THE MONTH OF MAY 2020**

Account Number	Account Name	PO#	Check Date	Vendor Name	Description	Inv/Enc Amt
41-4002-4321-64900	Other Expenses		05/28/2020	CITY OF JANESVILLE	LANDFILL 04/2020	204.00
<b>T- Avon Routine Maintenance PROG TOTAL</b>						<b>204.00</b>
41-4006-4400-62150	Engineering		05/21/2020	WISCONSIN DEPARTMENT OF TRANSP	EM GROVE RD BRG-TWN BRADFORD	838.45
<b>T-Bradford Misc Services PROG TOTAL</b>						<b>838.45</b>
41-4016-4321-63701	Stone & Gravel		05/14/2020	BJOIN LIMESTONE INC	10.87 TON GRAVEL	52.18
41-4016-4321-64900	Other Expenses		05/28/2020	CITY OF JANESVILLE	LANDFILL 04/2020	5.25
<b>T-Janesville Routine Maint PROG TOTAL</b>						<b>57.43</b>
41-4016-4400-62150	Engineering		05/21/2020	WISCONSIN DEPARTMENT OF TRANSP	MINERAL PT RD BRG-TWN JSVL	12,970.25
<b>T-Janesville Misc Services PROG TOTAL</b>						<b>12,970.25</b>
41-4018-4321-63701	Stone & Gravel		05/21/2020	ROCK ROAD COMPANIES INC	17.38 MED RIP RAP	742.14
			05/07/2020	FRANK SILHA AND SONS EXCAVATIN	17.53 TON 3" ROCK	493.35
<b>T-Johnstown Routine Maint PROG TOTAL</b>						<b>1,235.49</b>
41-4020-4400-62150	Engineering		05/21/2020	WISCONSIN DEPARTMENT OF TRANSP	S SMITH RD BRDG-TWN LAPRAIRIE	6.75
<b>T-LaPrairie Misc Services PROG TOTAL</b>						<b>6.75</b>
41-4022-4321-63701	Stone & Gravel		05/28/2020	FRANK SILHA AND SONS EXCAVATIN	85.88 TN GRAVEL	1,306.33
41-4022-4321-64900	Other Expenses		05/28/2020	CITY OF JANESVILLE	LANDFILL 04/2020	6.00
<b>T-Lima Routine Maintenance PROG TOTAL</b>						<b>1,312.33</b>

**COMMITTEE REVIEW REPORT  
WITH DESCRIPTION  
FOR THE MONTH OF MAY 2020**

Account Number	Account Name	PO#	Check Date	Vendor Name	Description	Inv/Enc Amt
41-4024-4321-64900	Other Expenses		05/28/2020	CITY OF JANESVILLE	LANDFILL 04/2020	20.00
<b>T-Magnolia Routine Maintenance PROG TOTAL</b>						<b>20.00</b>
41-4026-4400-63701	Stone & Gravel		05/28/2020	FRANK SILHA AND SONS EXCAVATIN	MANOGUE RD 401.39 TN GRAVEL	9,575.90
<b>T-Milton Misc Services PROG TOTAL</b>						<b>9,575.90</b>
41-4028-4400-62150	Engineering		05/21/2020	WISCONSIN DEPARTMENT OF TRANSP	SKINNER RD BRG-TWN NEWARK	6,022.43
<b>T-Newark Misc Services PROG TOTAL</b>						<b>6,022.43</b>
41-4034-4321-64900	Other Expenses		05/28/2020	CITY OF JANESVILLE	LANDFILL 04/2020	12.00
<b>T-Rock Routine Maintenance PROG TOTAL</b>						<b>12.00</b>
41-4036-4321-64900	Other Expenses		05/28/2020	CITY OF JANESVILLE	LANDFILL 04/2020	18.00
<b>T-Spring Valley Routine Maint PROG TOTAL</b>						<b>18.00</b>
41-4038-4400-62150	Engineering		05/21/2020	WISCONSIN DEPARTMENT OF TRANSP	S SMITH RD BRDG-TWN TURTLE	6.75
<b>T-Turtle Misc Services PROG TOTAL</b>						<b>6.75</b>
41-4241-4400-62119	Other Services		05/21/2020	WISCONSIN DEPARTMENT OF TRANSP	CTH MM/RUGER AV-CITY JSVL	63,284.56
41-4241-4400-64900	Other Expenses		05/07/2020	JEFFERSON COUNTY HIGHWAY COMMI	10000 GAL BRINE	1,802.00
<b>C-Janesville Misc Services PROG TOTAL</b>						<b>65,086.56</b>
41-4257-4400-64900	Other Expenses		05/07/2020	JEFFERSON COUNTY HIGHWAY COMMI	10000 GAL BRINE	1,802.00

**COMMITTEE REVIEW REPORT  
WITH DESCRIPTION  
FOR THE MONTH OF MAY 2020**

Account Number	Account Name	PO#	Check Date	Vendor Name	Description	Inv/Enc Amt
<b>C-Milton Misc Services PROG TOTAL</b>						<b>1,802.00</b>
41-4290-4290-63599	Sundry Items		05/14/2020	REGISTRATION FEE TRUST	ME TRAILER C1	169.50
			05/21/2020	PRECISE MRM LLC	MOTOR POOL-MONTHLY	81.00
<b>Motor Pool Operations PROG TOTAL</b>						<b>250.50</b>
41-4300-4110-46990	Misc Gen Revenue		05/28/2020	ARNDT,JOHN	DRIVEWAY PERMIT REFUND	150.00
41-4300-4110-61915	Cert/Lic/Other		05/07/2020	WISCONSIN COUNTY HIGHWAY ASSOC	NACE ANNUAL DUES	500.00
41-4300-4110-63100	Office&Misc Exp		05/21/2020	US BANK	OFFICE SUPPLIES	44.83
41-4300-4110-63205	Membership Dues		05/21/2020	US BANK	ASCE MEMBERSHIP DUES	295.00
<b>County Highway Administration PROG TOTAL</b>						<b>989.83</b>
41-4300-4192-62210	Telephone		05/21/2020	PRECISE MRM LLC	CTY-MONTHLY	3,375.00
<b>County Highway Radio Maint PROG TOTAL</b>						<b>3,375.00</b>
41-4300-4321-62201	Electric		05/14/2020	ALLIANT ENERGY/WP&L	Electric	184.92
			05/28/2020	ROCK ENERGY COOPERATIVE	APRIL 60715001	13.54
41-4300-4321-63701	Stone & Gravel		05/28/2020	FRANK SILHA AND SONS EXCAVATIN	CTH A WEST 103.11 TN GRAVEL	582.58
41-4300-4321-64900	Other Expenses		05/28/2020	CITY OF JANESVILLE	LANDFILL 04/2020	72.00
41-4300-4321-64904	Sundry Expense		05/21/2020	US BANK	COVID	750.17
<b>County Highway Routine Maint PROG TOTAL</b>						<b>1,603.21</b>
41-4300-4324-62150	Engineering					



**COMMITTEE REVIEW REPORT  
WITH DESCRIPTION  
FOR THE MONTH OF MAY 2020**

Account Number	Account Name	PO#	Check Date	Vendor Name	Description	Inv/Enc Amt
			05/21/2020	RH BATTERMAN AND COMPANY INC	CTH B SHRT SPAN DESIGN-ROCK CO	3,828.00
				<b>County Highway Bridge Maint PROG TOTAL</b>		<b>3,828.00</b>
41-4300-4327-63701	Stone & Gravel		05/14/2020	BJOIN LIMESTONE INC	CTH A 1672.91 TON GRAVEL	29,263.05
				<b>County Highway Shouldering PROG TOTAL</b>		<b>29,263.05</b>
41-4300-4328-63701	Stone & Gravel		05/28/2020	FRANK SILHA AND SONS EXCAVATIN	CTH A 88.15 TN RIP RAP	6,143.91
41-4300-4328-64900	Other Expenses		05/14/2020	DALMARAY CONCRETE PRODUCTS INC	CTH F CULVERT	2,100.00
			05/21/2020	YESKE CONSTRUCTION COMPANY INC	CTH A 1152 LN CURB/GUTTER	24,192.00
				<b>County Road Construction PROG TOTAL</b>		<b>32,435.91</b>
41-4310-4701-63705	Asphalt		05/28/2020	ROCK ROAD COMPANIES INC	8.40 TN ASPHALT	915.64
				<b>State Maint AFE 0053-01-01 PROG TOTAL</b>		<b>915.64</b>
41-4310-4705-63701	Stone & Gravel		05/28/2020	FRANK SILHA AND SONS EXCAVATIN	44.16 TN GRAVEL	249.50
				<b>State Maint AFE 0053-01-05 PROG TOTAL</b>		<b>249.50</b>
41-4310-4707-64900	Other Expenses		05/21/2020	US BANK	TRAFFIC CONTROL	225.77
				<b>State Maint AFE 0053-01-07 PROG TOTAL</b>		<b>225.77</b>
41-4310-4711-64900	Other Expenses		05/07/2020	JEFFERSON COUNTY HIGHWAY COMMI	25000 GAL BRINE	4,505.00
				<b>State Maint AFE 0053-01-11 PROG TOTAL</b>		<b>4,505.00</b>
41-4310-4721-64900	Other Expenses		05/14/2020	MENARDS	QUIKRETE	214.21

**COMMITTEE REVIEW REPORT  
WITH DESCRIPTION  
FOR THE MONTH OF MAY 2020**

Account Number	Account Name	PO#	Check Date	Vendor Name	Description	Inv/Enc Amt
<b>State Maint AFE 0053-01-21 PROG TOTAL</b>						<b>214.21</b>
41-4310-4731-63701	Stone & Gravel		05/21/2020	LITTLE LIMESTONE PRODUCTS	3.50 TN 3/4" CLEAR	97.70
			05/21/2020	CORPORATE CONTRACTORS INC	3.23 TN 3/4" CLEAN STONE	79.07
41-4310-4731-64900	Other Expenses		05/14/2020	MENARDS	DRAIN TILE	95.98
			05/28/2020	METAL CULVERTS INC	HWY 14 CULVERTS	562.68
<b>State Maint AFE 0053-01-31 PROG TOTAL</b>						<b>835.43</b>
41-4310-4733-64900	Other Expenses		05/28/2020	CITY OF JANESVILLE	LANDFILL 04/2020	150.00
<b>State Maint AFE 0053-01-33 PROG TOTAL</b>						<b>150.00</b>
41-4310-4740-64900	Other Expenses		05/21/2020	PRECISE MRM LLC	STATE-MONTHLY	594.00
<b>Special AFE'S PROG TOTAL</b>						<b>594.00</b>
41-4330-4340-62119	Other Services		05/21/2020	WISCONSIN DEPARTMENT OF TRANSP	CTH MM/RUGER AV-ROCK CO	89,259.68
41-4330-4340-62150	Engineering		05/21/2020	WISCONSIN DEPARTMENT OF TRANSP	SKINNER RD BRG-ROCK CO	22,208.32
<b>Federal Aid Construction PROG TOTAL</b>						<b>111,468.00</b>
41-4350-4210-61920	Physicals		05/14/2020	DEAN MEDICAL CENTER	Physicals	754.00
<b>Cost Pools-Employee Benefits PROG TOTAL</b>						<b>754.00</b>
41-4350-4220-63400	Operating Supply		05/14/2020	BADGER CONTRACTORS RENTAL AND	Operating Supplies	330.94
			05/21/2020	US BANK	Operating Supplies	50.60
41-4350-4220-63602	Consumable Tools		05/21/2020	JOHNSON TRACTOR INC	Consumable Tools	187.20

**COMMITTEE REVIEW REPORT  
WITH DESCRIPTION**

FOR THE MONTH OF MAY 2020

Account Number	Account Name	PO#	Check Date	Vendor Name	Description	Inv/Enc Amt
			05/28/2020	MENARDS	Consumable Tools	131.76
			05/21/2020	HAHNS ACE HARDWARE INC	Consumable Tools	8.59
			05/28/2020	OLSEN SAFETY EQUIPMENT CORP	SAFETY SUPPLIES	1,156.26
			05/14/2020	KB SHARPENING SERVICE INC	DRILL BIT SHARPENING	30.00
			05/14/2020	NAPA AUTO PARTS	Consumable Tools	22.79
			05/14/2020	NORTH CENTRAL UTILITY OF WI LL	Consumable Tools	523.28
			05/21/2020	US BANK	Consumable Tools	54.97
<b>Cost Pools-Field Small Tools PROG TOTAL</b>						<b>2,496.39</b>
41-4350-4230-62160	Cleaning Contrac					
		P2000644	05/28/2020	ALSCO INC	UNIFORMS	251.88
41-4350-4230-63400	Operating Supply					
			05/14/2020	KELLEY WILLIAMSON CO	Operating Supplies	533.78
			05/28/2020	MENARDS	Operating Supplies	33.64
			05/14/2020	WIEDENBECK INC	Operating Supplies	164.40
			05/21/2020	ZEP MANUFACTURING CO	Operating Supplies	1,159.84
			05/14/2020	FUEL SYSTEMS INC	Operating Supplies	84.69
			05/14/2020	ORFORDVILLE LUMBER CO	Operating Supplies	17.99
			05/14/2020	NAPA AUTO PARTS	Operating Supplies	321.61
			05/28/2020	KIMBALL MIDWEST	ON TIME DISCOUNT	1,136.13
			05/28/2020	DEL CITY	Operating Supplies	62.02
			05/21/2020	US BANK	Operating Supplies	411.19
		P2000644	05/28/2020	ALSCO INC	TOWELS	90.60
41-4350-4230-63516	Welding Supplies					
			05/21/2020	WELDERS SUPPLY CO BELOIT INC	CYLINDER RENTAL DPW	2,230.82
41-4350-4230-63602	Consumable Tools					
			05/14/2020	LAKESIDE INTERNATIONAL TRUCKS	Consumable Tools	518.40
			05/21/2020	DRAEGER TOOLS LLC	Consumable Tools	150.90
			05/21/2020	US BANK	Consumable Tools	152.09
41-4350-4230-64900	Other Expenses					
			05/07/2020	UNITED PARCEL SERVICE	SHIPPING	4.26
<b>Cost Pools-Shop Operations PROG TOTAL</b>						<b>7,324.24</b>

**COMMITTEE REVIEW REPORT  
WITH DESCRIPTION  
FOR THE MONTH OF MAY 2020**

Account Number	Account Name	PO#	Check Date	Vendor Name	Description	Inv/Enc Amt
41-4350-4270-63500	R&M Supplies					
		P2000644	05/28/2020	ALSCO INC	MATS	131.29
41-4350-4270-64900	Other Expenses					
			05/28/2020	UNIVERSAL RECYCLING TECHNOLOGI	TV RECYCLING	43.26
<b>Cost Pools-Buildings/Grounds PROG TOTAL</b>						<b>174.55</b>
41-4350-4271-62201	Electric					
			05/28/2020	ROCK ENERGY COOPERATIVE	APRIL 141017001	345.16
<b>Cost Pools-Salt Shed Operation PROG TOTAL</b>						<b>345.16</b>
41-4350-4280-67100	Equip >\$25,000					
			05/14/2020	MONROE TRUCK EQUIPMENT INC	BELLY BLADE 7190	1,176,395.00
			05/21/2020	DEERE AND CO	263 264 265 266 MOWING TRACTOR	351,394.62
			05/21/2020	NATIONAL AUTO FLEET GROUP	174 CHASSIS SINGLE AXLE MACK	122,178.00
<b>Cost Pools-Acquire Cap Assests PROG TOTAL</b>						<b>1,649,967.62</b>
41-4350-4285-64900	Other Expenses					
			05/14/2020	WISCONSIN COUNTY HIGHWAY ASSOC	MS/NK WORK ZONE PAVEMENT MARKI	190.00
<b>Sign Production PROG TOTAL</b>						<b>190.00</b>
41-4551-4082-62201	Electric					
			05/28/2020	ROCK ENERGY COOPERATIVE	APRIL 802265000	54.89
<b>County Parks-Carver Roehl PROG TOTAL</b>						<b>54.89</b>
41-4551-4083-62201	Electric					
			05/28/2020	ROCK ENERGY COOPERATIVE	APRIL 805777000	39.14
<b>County Parks-Gibbs Lake PROG TOTAL</b>						<b>39.14</b>
41-4551-4088-62201	Electric					
			05/28/2020	ROCK ENERGY COOPERATIVE	APRIL 191588000	183.81
41-4551-4088-64900	Other Expenses					
		P2000304	05/28/2020	MENARDS	POND VALVES	38.61

**COMMITTEE REVIEW REPORT  
WITH DESCRIPTION  
FOR THE MONTH OF MAY 2020**

Account Number	Account Name	PO#	Check Date	Vendor Name	Description	Inv/Enc Amt
<b>County Parks-Beckman Mill PROG TOTAL</b>						<b>222.42</b>
41-4551-4090-62201	Electric		05/07/2020	ALLIANT ENERGY/WP&L	Electric	63.49
<b>County Parks-Royce Dallman PROG TOTAL</b>						<b>63.49</b>
41-4551-4091-62201	Electric		05/14/2020	ALLIANT ENERGY/WP&L	ELECTRIC	73.15
<b>County Parks-Sportsman PROG TOTAL</b>						<b>73.15</b>
41-4551-4093-62201	Electric		05/07/2020	ALLIANT ENERGY/WP&L	Electric	10.59
<b>County Parks-Sweet Allyn PROG TOTAL</b>						<b>10.59</b>
41-4551-4095-62164	Disposal Service	P2000259	05/28/2020	BADGERLAND DISPOSAL	2020 BLANKET PURCHASE ORDER	512.69
41-4551-4095-63602	Consumable Tools		05/21/2020	US BANK	DIGITAL IN LINE TURBINE	133.99
41-4551-4095-64900	Other Expenses		05/21/2020	US BANK	TOILET PAPER	172.74
		P2000304	05/28/2020	MENARDS	2020 BLANKET PURCHASE ORDER	58.61
		P2000362	05/21/2020	FERRELLGAS LP	PROPANE	330.56
		P2000367	05/28/2020	ALSCO INC	UNIFORMS	46.20
<b>County Parks-General Maint PROG TOTAL</b>						<b>1,254.79</b>
41-4551-4102-62201	Electric		05/28/2020	ROCK ENERGY COOPERATIVE	APRIL 805615000	58.31
<b>County Parks-Turtle Creek Pkwy PROG TOTAL</b>						<b>58.31</b>
41-4551-4110-44173	Park Use Fee		05/07/2020	LARSON,DON	PARK RESERVATION REFUND	94.79
			05/07/2020	WOLFGRAM,CHRISTAL	PARK RESERVATION REFUND	142.18
41-4551-4110-63200	Pubs/Subs/Dues					

**COMMITTEE REVIEW REPORT  
WITH DESCRIPTION**

FOR THE MONTH OF MAY 2020

Account Number	Account Name	PO#	Check Date	Vendor Name	Description	Inv/Enc Amt
			05/21/2020	US BANK	ASCE MEMBERSHIP DUES	175.00
<b>County Parks-Administration PROG TOTAL</b>						<b>411.97</b>
41-4592-4599-69999	Non-Converted		05/21/2020	ROCK COUNTY ALLIANCE OF SNOWMO	TRAIL BILLING	9,005.25
<b>2019-20 Snowmobile Grant PROG TOTAL</b>						<b>9,005.25</b>

I have reviewed the preceding payments in the total amount of **\$1,962,517.35**

Date: \_\_\_\_\_

Dept Head \_\_\_\_\_

Committee Chair \_\_\_\_\_

**COMMITTEE REVIEW REPORT  
WITH DESCRIPTION**  
FOR THE MONTH OF MAY 2020

<b>Account Number</b>	<b>Account Name</b>	<b>PO#</b>	<b>Check Date</b>	<b>Vendor Name</b>	<b>Description</b>	<b>Inv/Enc Amt</b>
-----------------------	---------------------	------------	-------------------	--------------------	--------------------	--------------------

---

**REPORT COMPLETE!**

**Report Total: 2,061,354.54**

For Job Numbers: 2041232, 2044619, 2046933, 2049456, 2050455