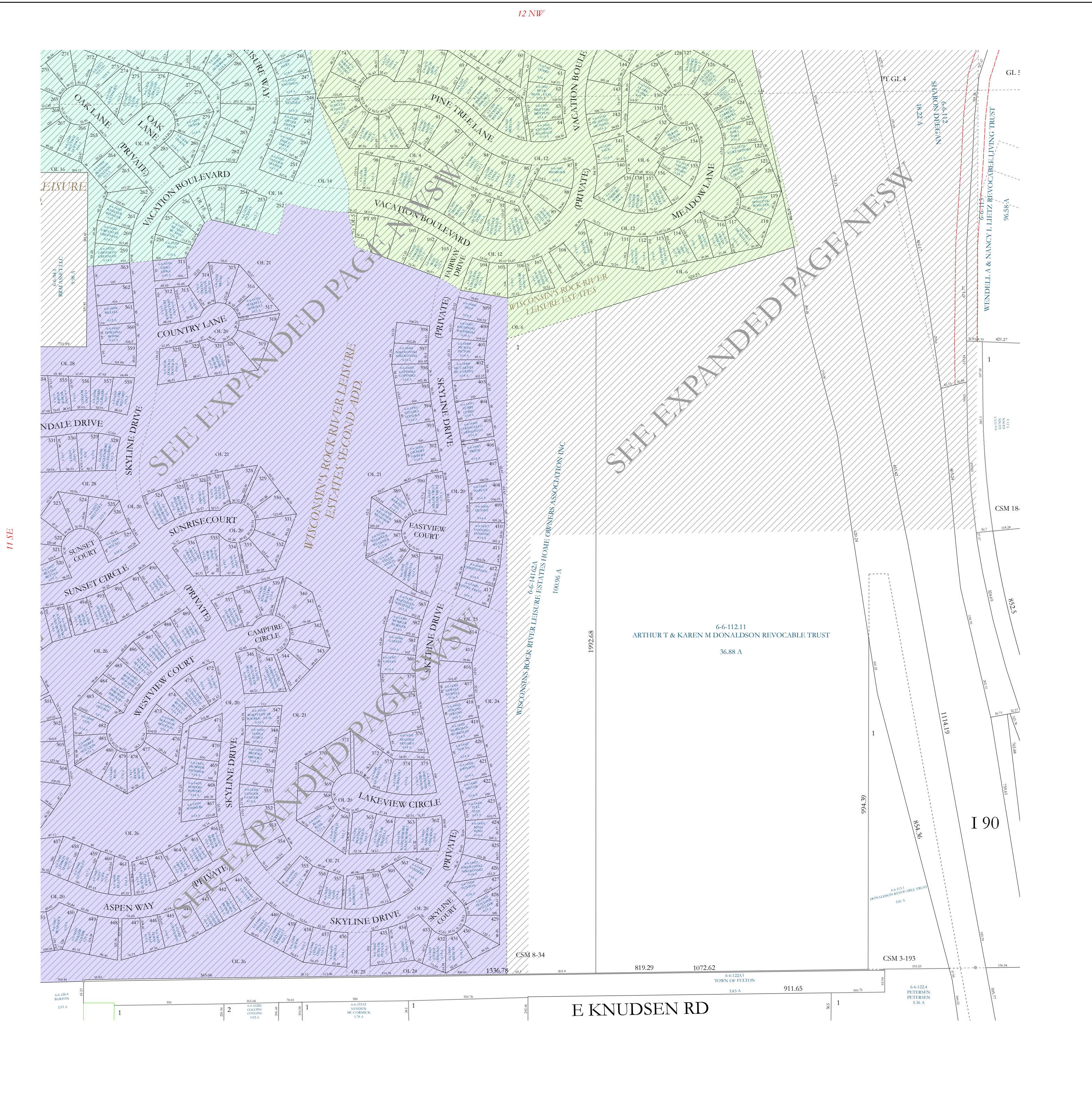


12 NW

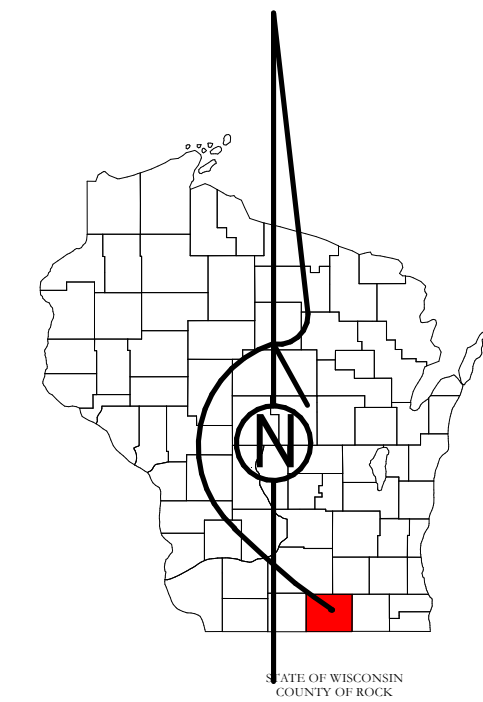


# Property Division Map

Town of  
Fulton

T. 4 N. - R. 12 E.

Section 12 SW

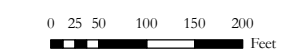


PREPARED BY  
**REAL PROPERTY DESCRIPTION  
 DEPARTMENT**  
 USING  
**ROCK COUNTY  
 GEOGRAPHIC INFORMATION SYSTEM**

DUPLICATION OF THIS MAP PROHIBITED  
 WITHOUT THE WRITTEN CONSENT OF THE  
 REAL PROPERTY DESCRIPTION DEPARTMENT.

THIS MAP WAS PREPARED PURSUANT  
 TO SECTION 70.09 WIS. STATS.  
 USING PUBLIC RECORDS. IT IS NOT INTENDED  
 TO BE A SUBSTITUTE FOR AN  
 ACTUAL FIELD SURVEY  
 AND IS ADVISORY ONLY.

DISTANCES SHOWN ON THIS  
 MAP WERE PRODUCED BY  
 THE GIS SYSTEM AND ARE  
 FOR REFERENCE ONLY.  
 SEE DOCUMENT OF RECORD  
 FOR ACTUAL DISTANCE.



- Gap
- Overlap
- City of Edgerton
- CSM
- CSMHYDRO
- CSMLOT
- CSMLOTHYDRO
- MFL
- dam
- easement
- hydro
- lots
- parcels
- parcelshydro
- roadrw

See Pages

January 1, 2022

12 SW