

U.S. PUBLIC LAND SURVEY MONUMENT RECORD

For Public Land Survey Corners in:

WI ADMINISTRATIVE CODE A-E 7.08 REQUIREMENT

T. 2N., R. 11E

CORNER CODE INDEX

PLYMOUTH TWP
ROCK COUNTY WI

IF AVAILABLE
ROCK COUNTY COORDINATES PREFERRED

A	1	2	3	4	5	6	7	8	9	10	11	12	13	14	15	16	17	18	19	20	21	22	23	24	25
B	6	5	4	3	2	1																			
C																									
D																									
E																									
F	1	8	9	10	11	12																			
G																									
H																									
I																									
J																									
K	18	17	16	15	14	13																			
L																									
M																									
N																									
O																									
P	19	20	21	22	23	24																			
Q																									
R																									
S	30	29	28	27	26	25																			
T																									
U																									
V																									
W																									
X	31	32	33	34	35	36																			
Y																									
Z																									

PLACE MONUMENT SYMBOL  AT PROPER LOCATION ON ABOVE INDEX

North _____ Elev. _____

East _____

Hor. Datum _____ Vert. Datum _____

LATITUDE _____ ELLIPS. HT. _____

LONGITUDE _____

GPS (X) _____ TRAVERSE (X) _____

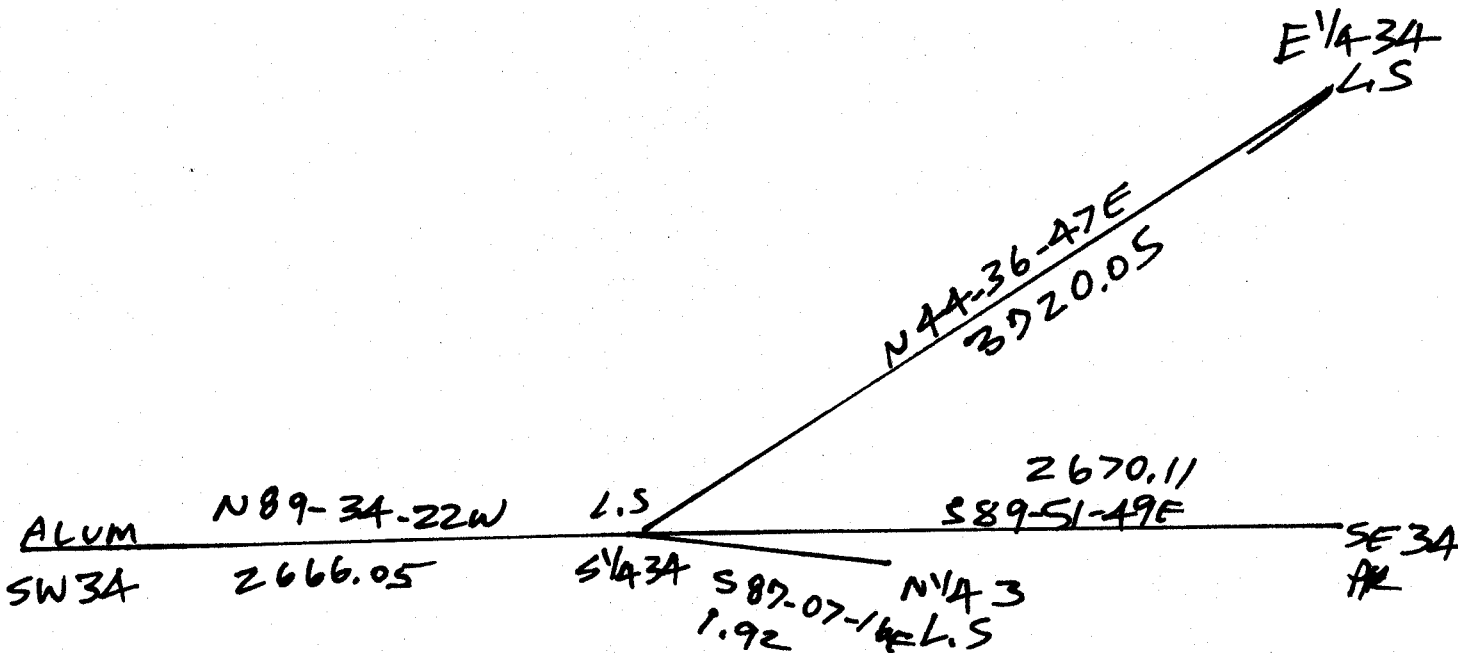
BASED ON THE FOLLOWING CONTROL:

 CORNER MONUMENT

 WITNESS MONUMENT

(a)

BEARINGS ARE BASED ON:



OBSERVATION SHEETS 394, 435, 628

FIELD BOOK _____ PAGE # _____

SHEET 1 OF 1

SHOW A PLAN VIEW DRAWING DEPICTING THE CORNER MONUMENT AND SURROUNDING PHYSICAL FEATURES, INCLUDING THE EXCAVATION AREA AND DEPTH.

PLANNING & ZONING COMMITTEE ADOPTED THE ABOVE FORM ON 12/2/1982

CORNER CODE Z-15(1)

PL628

(B) Describe any record evidence, monument evidence, occupational evidence, testimonial evidence or any other material evidence you considered, and whether the monument was found or placed.

- 1833 MULLETT WEST ON SOUTH SIDE SECTION 34
2640 SET QUARTER SECTION POST WHITE OAK 16 N29E
155.76' BUR OAK ; BUR OAK 12 N60 1/2W 167.64';
3960 ENTER PRAIRIE
5280 SET POST CORNER SECTIONS 33 & 34 MADE A MOUND
OF STONES 3 FEET IN DIAMETER AT BASE & 3 FEET HIGH
FIRST 3/4 THINLY TIMBERED WITH BLACK WHITE AND BUR
OAK THICK UNDERGROWTH HAZEL BRIERS GRAPE VINES
& LAST 1/4 RICH DRY PRAIRIE.
- 1868 LOCKE PLYMOUTH TWP REMONUMENTATION PG 16
WEST ON SOUTH LINE SEC 34 VAR 6 AUG 21 1868
264 SET OFF 3.3' SOUTH
528 SET OFF 6.6 SOUTH
792 SET OFF 1.32' SOUTH
1518 SET OFF 1.65' SOUTH
2673 INTERSECTED 1/4 LINE 14.52' SOUTH OF COR. FOUND
BTS AND OLD STAKE. VAR CORRECTED 5-58.
CONTINUED WEST FROM 1/4 COR WITH VAR 6-22
3762 ENTER PRAIRIE
5339.4 INTERSECTED WEST BOUNDARY 30.36' SOUTH OF COR.
FOUND LARGE LIMESTONE SET FOR CORNER. COR IN
CENTER HIGHWAYS RUNNING N, E & W SET MONUMENT IN
MOUND OF STONES COVERED WITH EARTH. VAR
CORRECTED 5-43 1/4 MONUMENT MARKED 34 ON NORTH
FACE.
- 1871 COLLINS EAST ON NORTH LINE OF SEC 3 VARIATION 5-50 PF 173
NEWARK TWP T1N R11E
5280 SECTION CORNER
BACK TO
2640 SET 1/4 STONE 1.98' EAST OF PLYMOUTH CORNER
OCT 26 1871
- 1882 RUGER VOL 2 PG 403 STATES NOTHING ABOUT MON. 2632.74 TO
NW COR SEC 3 & 2657.49 TO CENTER SEC 3. ^{N 1/4 3}
- 1882 HOLMES VOL 2 PG 349 2653.86 TO CENTER OF SEC 3
- 1873 RUGER VOL 2 PG 117 CALLS FOR STONE MON 1.98' EAST OF THE
S 1/4 COR SEC 34, 2653.86 TO CENTER OF SEC 3
- 1957 BATTERMAN VOL 3 PG 520 FD MON AT S 1/4 COR SEC 34 &
REFERENCED SAME. FD NO MON. AT N 1/4 COR SEC 3. 1.98
ACCORDING TO REC BETWEEN CORNERS WITH PLYMOUTH COR TO THE
WEST, SOUTH 1342.87 TO THE 1/16TH COR.(FD 16X5X4 1/2
LIMESTONE BROKEN. SET 1 1/2 PIPE) WEST 2637.63 ^{S 1/4 3A TO NE 4}
- 1976 BARNES VOL 5 PG 204 FD CUT STONES. S 1/4 COR SEC 34
PLYMOUTH TWP LEANING; STRAIGHTENED, PLACED 1 1/2X24 IP
HORIZONTALLY BETWEEN MONUMENTS. REFERENCED BOTH.
MONUMENTS ARE 3.5' SOUTH OF SOUTH PVMT EDGE. 1.93'
BETWEEN LIMESTONES.
- 1986 BARNES VOL 6 PG 358 SHOWS RECORD DISTANCES
- 1989 BARNES #12293 FD L.S. N89-42E TO SE COR SEC 34, N89-59W TO
SW COR SEC 34, & N1-14-10W TO N 1/4 COR SEC 34.
- 1998 COMBS GCM21-448 CUT L.S.
- 2000 BARNES Z-15 FD CUT LIMESTONE BELOW GRADE WITH VERTICAL
REROD ON ALL 4 SIDES. FOUND CUT LIMESTONE BELOW GRADE AT
S 1/4 COR SEC 34 PLYMOUTH TWP.

C) Was the corner restored through acceptance of (1) an obliterated evidence location, or, (2) a found perpetuated location?

ACCEPTED FOUND CUT LIMESTONES.

I, Donald Barnes, hereby certify that the corner location as identified by the corner code index was determined by me under my direction and control and that this U.S. Public Land Survey Monument Record is correct and complete to the best of my knowledge and belief.

seal
emboss

Donald Barnes

6-17-03

SHEET 1 OF 1

CORNER CODE Z-15(1)

A-E 7.08 REQUIREMENT