

U.S. PUBLIC LAND SURVEY MONUMENT RECORD

For Public Land Survey Corners in:

WI ADMINISTRATIVE CODE A-E 7.08 REQUIREMENT

T. 2 N., R. 11 E

CORNER CODE INDEX

A	2	3	4	5	6	7	8	9	10	11	12	13	14	15	16	17	18	19	20	21	22	23	24	25
B	6																							
C		5																						
D			4																					
E				3																				
F					2																			
G	1																							
H		8																						
I			9																					
J				10																				
K					11																			
L						12																		
M	18						15																	
N		17						16																
O			18						15															
P				19						14														
Q					20						13													
R						21						12												
S							20						11											
T								21						10										
U									22						9									
V										23						8								
W											24						7							
X												25						6						
Y													26						5					
Z														27						4				

PLYMOUTH TWP
ROCK COUNTY WI

IF AVAILABLE
ROCK COUNTY COORDINATES PREFERRED

North _____ Elev. _____

East _____

Hor. Datum _____ Vert. Datum _____

LATITUDE _____ ELLIPS. HT. _____

LONGITUDE _____

GPS (X) _____ TRAVERSE (X) _____

BASED ON THE FOLLOWING CONTROL:

PLACE MONUMENT SYMBOL AT PROPER LOCATION ON ABOVE INDEX

CORNER MONUMENT

WITNESS MONUMENT

(a)

BEARINGS ARE BASED ON:

OBSERVATION SHEETS 41944503

FIELD BOOK _____ PAGE # _____

SHEET 1 OF 2

SHOW A PLAN VIEW DRAWING DEPICTING THE CORNER MONUMENT AND SURROUNDING PHYSICAL FEATURES, INCLUDING THE EXCAVATION AREA AND DEPTH.

PLANNING & ZONING COMMITTEE ADOPTED THE ABOVE FORM ON 12/2/1982

CORNER CODE Z-5(1)

PL623

(B) Describe any record evidence, monument evidence, occupational evidence, testimonial evidence or any other material evidence you considered, and whether the monument was found or placed.

- 1833 MULLETT PG 3 WEST ON SOUTH SIDE SECTION 31 (T2N R11E)
660 LEAVE PRAIRIE & ENTER WOODLAND
2640 SET QUARTER SECTION POST BUR OAK 14 N31E 116.16'; BUR OAK 16 N42W 80.52'
5280 INTERSECTED RANGE LINE 264' SOUTH OF TEMPORARY POST FOR CORNER TO TOWNSHIP 1 & 2 N RANGES 10 & 11E. BUR OAK 14 S34E 15.84', BUR OAK 12 N82W 33', BUR OAK 12 S46W, BUR OAK 14 N68E. LAND ROLLING FIRST RATE BLACK WHITE AND BUR OAK. SEPT 6TH, 1833
- 1833 MULLETT PG 3 WEST ON SOUTH SIDE SECTION 32 (2N R11E)
66 LEAVE PRAIRIE AND ENTER MARSH
330 STREAM 2.64' C SOUTH
759 LEAVE MARSH AND ENTER WOOD LAND
1188 ENTER PRAIRIE
2640 SET QUARTER SECTION POST IN PRAIRIE SECTION POST IN PRAIRIE AND MADE A MOUND
5280 SET POST CORNER SECTION 31 & 32 IN PRAIRIE AND MADE MOUND LAND MOST ROLLING DRY PRAIRIE FIRST RATE BY OBSERVATION VAR FOUND 7-35
- 1833 HARRISON DEC. PG 32 NORTH BETWEEN SEC 31 & 32 T2N R11E
2640 QUARTER SEC COR NEAR N.E. EDGE OF PRAIRIE BUR OAK 24 S86E 378.84'
4785 LEFT PRAIRIE & ENTER TIMBER
5280 COR TO SECS 29,30,31,32 BUR OAK 24 N41E 51.48', BUR OAK 18 N22W 97.02', BUR OAK 10 S78W 166.98', BUR OAK 10 S76E 34.98'
- 1834 MILLER PG 38 NORTH BETWEEN SEC 5 & 6
349.8 BUR OAK 15 IN DIAMETER
2014.32 HICKORY 12 IN DIAMETER
2640 SET 1/4 SEC POST WHITE OAK 14 IN S89W 12.54', WHITE OAK 14 IN N89 1/2 E 22.44'
4047.12 BUR OAK 16
4950 ENTER PRAIRIE
5250.96 INTERSECTED N. BOUNDARY 30.36' W OF POST. SET POST COR OF SECS 5 & 6 WHITE OAK 18 IN S5E 696.96'; BUR OAK 22 S12W 284.46' LAND 2ND RATE GENTLY ROLLING. TIMBER OAK & HICKORY. OAK TO HAZEL UNDER GROWTH. PRAIRIE GRASS. MARCH 13, 1834.
- 1833 ORIG PLAT SHOW SE COR SEC 31 PLYMOUTH TWP 30.36' EAST OF THE NW COR SEC 5 NEWARK TOWNSHIP.
- 1868 LOCKE PLYMOUTH TWP REMONUMENTATION SEPT 11 1868
PG 70 WEST ON SOUTH LINE SEC 32 (T2N R11E) VAR 6-20
0 SET OFF 12.87' SOUTH
406.89 CENTER OF BRIDGE OVER CREEK 7.92' WIDE
2640 SET TEMPORARY 1/4 COR. COR. LOST.
5321.91 INTERSECTED WEST BOUNDARY 60.39' SOUTH OF COR. FOUND OLD STAKE & WHERE BTS WERE DUG OUT. COR IN CENTER OF HIGHWAY RUNNING SOUTH & ON SOUTH SIDE OF E & W HIGHWAY
2660.96 SET 1/4 COR 20.96' WEST AND 36.63' NORTH OF TEMPORARY 1/4 COR. COR IN HIGHWAY. VAR CORRECTED (WHOLE LINE) 5-49.
PG 71 NORTH BETWEEN SECS 31 & 32 SEPT 12, 1868 VAR 7-10
2676.3 INTERSECTED 1/4 LINE 11.22' WEST OF 1/4 COR. FOUND STUMP OF B.T. AND OLD STAKE COR. IN N AND S FENCE. VAR CORRECTED 6-55
CONTINUED NORTH FROM 1/4 COR WITH VAR 7-5
5327.52 INTERSECTED NORTH BOUNDARY 18.48' EAST OF COR. VAR CORRECTED 7-29 SEPT 12 1868
PG 73 EAST ON SOUTH LINE SEC 31 SEPT 14 1868 VAR 8
2657.82 INTERSECTED 1/4 LINE 13.53' NORTH OF COR. FOUND WEST BT AND STUMP OF EAST BT. COR IN CENTER OF HIGHWAY AND IN LINE OF FENCE RUNNING SOUTH. VAR CORRECTED 5-43

Donald Barnes
3-07-03

5320.92 INTERSECTED EAST BOUNDARY 22.11' NORTH OF COR. VAR CORRECTED 5-31 1/4 MONUMENT MARKED 31 ON ITS NORTH FACE.

1871 COLLIN'S REMONUMENTATION NEWARK TWP T1N R11E PG 210 NORTH BETWEEN 5 & 6 VARIATION 7-30

2662.44 INTERSECT 1/4 LINE 7.26' EAST OF CORNER. SET 1/4 STONE BY STUMPS OF WITNESS TREES. CORRECTED VARIATION 7-20 CONTINUED NORTH VARIATION 7-30

5180.34 SECTION CORNER. PG 211 EAST ON NORTH LINE OF 5 VARIATION 5-43

5386.92 SET STONE FOR CORNER OF 4 & 5 36.96' EAST OF PLYMOUTH CORNER.

BACK

2693.46 SET 1/4 STONE 5.94' EAST OF PLYMOUTH 1/4 COR. PG 209 EAST ON NORTH LINE SEC 6 VARIATION 5-52

5283.96 SET STONE FOR CORNER OF 5 & 6 BY STUMP OF WITNESS TREE.

PLYMOUTH CORNER IS 30.36' WEST. {ORIG GOV. CALLS FOR PLYMOUTH COR. EAST OF NE COR SEC 5.}

BACK

2641.98 SET 1/4 STONE 13.2' W(?) OF PLYMOUTH CORNER. NOV 4TH 1871

1875 RUGER VOL 2 PG 193 CALLS FOR STONE MON. (NO DISTANCES) @ SW COR SEC 32.

1878 RUGER VOL 2 PG 244 CALLS FOR STONE MON AND VAR 4-30 TO N 1/4 COR SEC 5, VAR 4-30 2688.18' FROM N 1/4 COR TO NE CORNERS OF SEC 5, VAR 7-00 2516.91 TO W 1/4 COR SEC 5.

1937 SUNNY VOL 3 PG 357 DUG 6X8X4 DEEP FD NO MON (WESTERN HOLE) & DUG 5X8X4 DEEP (EASTERN HOLE) FD NO MON AT PLY. CORNER. 2517.9 TO W 1/4 COR SEC 5.

1957 BATTERMAN VOL 3 PG 521 STONE MON NOT FD. 2645.46 TO N 1/4 COR SEC 6, 2521.22 TO E 1/4 COR SEC 6 TO NE COR SEC 6.

1957 BATTERMAN VOL 3 PG 522 2645.46 FROM N 1/4 COR SEC 6 TO NE COR SEC 6.

1967 BATTERMAN VOL 4 PG 315 FD 6X6X24 CUT L.S. IN 3 PIECES AT NE COR SEC 6 NEWARK TWP. SET TIES. CALLS FOR IT 27' SOUTH OF CENTER OF PVMT. DUG & FD NOTHING AT SE COR SEC 31 PLY.

1976 BARNES VOL 5 PG 171 FD C.I. AT THE NE COR SEC 6 NEWARK TWP & REFERENCED SAME.

1993 KREBS MAP #09824 C.I. N89-44-31E 2662.95 TO S 1/4 COR SEC 32, N1-02-49W 2676.36 TO W 1/4 COR SEC 32, & N89-44-31E 5325.90 TO SE COR SEC 32. 30.36 EASTERLY OF NW COR SEC 5 NEWARK TWP

2001 BARNES Z-5 DUG 4X6' HOLE AND FOUND CUT LIMESTONE 1' BELOW PVMT. L.S. IS IN HARMONY WITH LOCK'S REMONUMENTATION. PLACED MAGNETS ON WEST SIDE. IT IS S86-53-34E 30.70' OF THE C.I. @ THE NE COR SEC 5 NEWARK TWP. ON LINE WITH E/W FENCE ON THE SOUTH SIDE OF RD.

C) Was the corner restored through acceptance of (1) an obliterated evidence location, or, (2) a found perpetuated location? ACCEPTED FOUND CUT L.S.

D) Describe any material discrepancy between the location of the corner as restored or reestablished and the location of that corner as previously restored or reestablished by distance and direction. Show the discrepancy on the plan view drawing under (a), above. Show the distances between the corner as previously restored or reestablished and (1) the corner as restored or reestablished, and (2) to at least 4 of the witness monuments shown on the drawing in (a), above.

IN 1993 KREBS MAP #09824 USED THE RECORD JOB ON LINE WITH THE SE COR OF SEC 32 FOR THE POSITION OF THE SW COR OF SEC 32. IN 2001 I FOUND THE CUT L.S., WHICH IS IN A DIFFERENT LOCATION.

I, Donald Barnes, hereby certify that the corner location as identified by the corner code index was determined by me under my direction and control and that this U.S. Public Land Survey Monument Record is correct and complete to the best of my knowledge and belief.

seal
emboss

3-07-03

SHEET 2 OF 3

CORNER CODE Z-5(1)

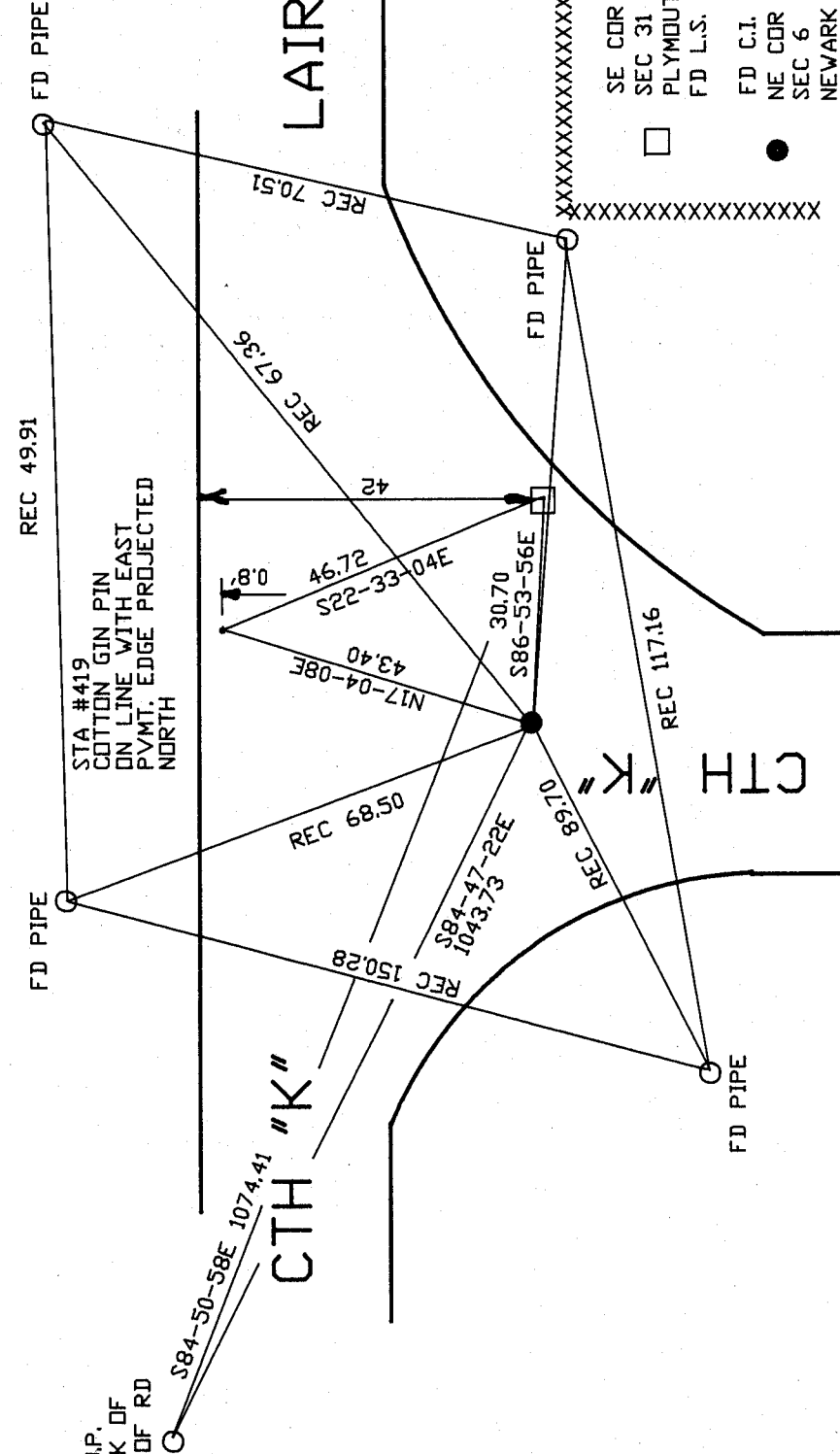
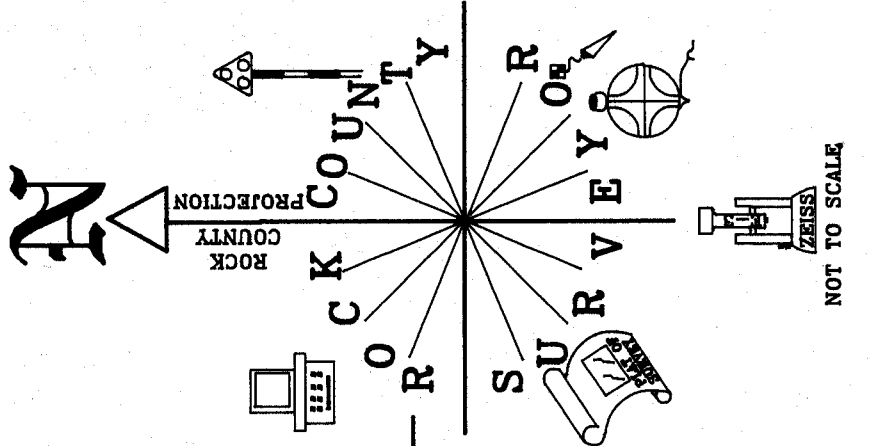
Donald Barnes

A-E 7.08 REQUIREMENT

PLYMOUTH TWP

NEWARK TWP

LAIRD RD



STA #419
 COTTON GIN PIN
 ON LINE WITH EAST
 PVMT. EDGE PROJECTED
 NORTH

STA 423
 3/4X24 REROD
 /PLASTIC CAP
 16' SE OF STEEL UP.
 2.5' NORTH OF BACK OF
 DITCH, NORTH SIDE OF RD

SE COR
 SEC 31
 PLYMOUTH TWP
 FD L.S.
 FD C.I.
 NE COR
 SEC 6
 NEWARK TWP

SHEET 3 OF 3

Embossed Seal
Boenes
 3-07-03

Z-5(1)