

U.S. PUBLIC LAND SURVEY MONUMENT RECORD

For Public Land Survey Corners in:

WI ADMINISTRATIVE CODE A-E 7.08 REQUIREMENT

T. 1 N., R. 12 E

BELOIT TWP

CORNER CODE INDEX

TWP

ROCK COUNTY WI

IF AVAILABLE

ROCK COUNTY COORDINATES PREFERRED

A	1	2	3	4	5	6	7	8	9	10	11	12	13	14	15	16	17	18	19	20	21	22	23	24	25
B	6																								
C		5																							
D			4																						
E				3																					
F					2																				
G						1																			
H	1																								
J		8																							
K			9																						
L				10																					
M					11																				
N						12																			
O							13																		
P								14																	
Q									15																
R										16															
S											17														
T												18													
U													19												
V														20											
W															21										
X																22									
Y																	23								
Z																		24							
																			25						
																				26					
																					27				
																						28			
																							29		
																								30	
																									31
																									32
																									33
																									34
																									35
																									36

North ~~201,092.92~~ Elev. _____

East ~~483,355.20~~

Hor. Datum County Vert. Datum _____

LATITUDE _____ ELLIPS. HT. _____

LONGITUDE _____

GPS (X) _____ TRAVERSE (X) _____

BASED ON THE FOLLOWING CONTROL:

PLACE MONUMENT SYMBOL AT PROPER LOCATION ON ABOVE INDEX

CORNER MONUMENT

WITNESS MONUMENT

(a)

BEARINGS ARE BASED ON:

FOUND TIES OF RECORD 2-15

FIELD BOOK _____ PAGE # _____

SHEET 1 OF 2

SHOW A PLAN VIEW DRAWING DEPICTING THE CORNER MONUMENT AND SURROUNDING PHYSICAL FEATURES, INCLUDING THE EXCAVATION AREA AND DEPTH.

PLANNING & ZONING COMMITTEE ADOPTED THE ABOVE FORM ON 12/2/1982

CORNER CODE 2-15 (1)

BE628

(B) Describe any record evidence, monument evidence, occupational evidence, testimonial evidence or any other material evidence you considered, and whether the monument was found or placed.

1833 LYON BASE LINE (N.W. TERR) EAST ALONG THE SOUTH SIDE OF SEC 34 VAR 6-00E

2640 SET POST AND RAISED A CIRCULAR MOUND OF EARTH FOR 1/4 SECTION CORNER.

5280 SET POST AND RAISED A SQUARE MOUND OF EARTH FOR CORNER TO SECTION 34 & 35.

LAND ROLLING, DRY, SANDY, 2ND RATE PRAIRIE.

1834 HARRISON (LYON'S BROTHER IN LAW) MAP CALLS FOR A RANDOM STATE LINE IN THE NORTHERLY PART OF SEC 34 WHICH IS PROBABLY LYON'S LINE.

1882 RUGER BK 4 PG 18 1310.10 FROM S 1/16TH COR SEC 1/4 TO SE COR SEC 34.

1902 WILSON BK 6 PG 50A 1330 FROM CENTER SEC 34 TO W 1/16TH COR OF SE 1/4 OF SEC 34.

1939 SHIMEALL CITY OF БЕЛОIT NOTES 397.28 WEST OF THE NE COR SEC 1. FOUND NAIL DROVE G.P. 4' LONG 2' FOOT BELOW GROUND. AT THE NE COR OF SEC 1 FOUND STONE WITH PLUG IN CENTER.

1940 MAP #11937 2313.69 TO N 1/4 COR SEC 1, 337.02 TO NE COR SEC 1, 1330.77 TO 1/16TH COR TO THE NORTH, ANGLE AT S 1/4 COR SEC 34 OF 89-19 FROM SW COR TO 1/16TH COR TO THE NORTH, ANGLE AT SW COR SEC 34 OF 90-48 FROM W 1/4 COR SEC 34 TO S 1/4 COR SEC 34.

1940 SHIMEALL MAP #7218 2662.62 TO CENTER SEC 34

1940 SHIMEALL VOL 6 PG 306 2646.73 TO SW COR SEC 34. 397.3 WEST OF THE NE COR SEC 1 T46N R11E.

1983 BARNES VOL 6 PG 306 FD 2" PIPE. 2645.71 TO SW COR SEC 34.

1983 BARNES Z15 FOUND 2" IRON PIPE 18" DEEP. DROVE PIPE DEEP & SET POLY MON ON TOP. THE GAS PIPE WAS ORIGINALLY SET BY SHIMEALL IN FEB 1940. REF SAME.

FOUND POLY MON.

C) Was the corner restored through acceptance of (1) an obliterated evidence location, or, (2) a found perpetuated location?
ACCEPTED FOUND MONUMENT.

D) Describe any material discrepancy between the location of the corner as restored or reestablished and the location of that corner as previously restored or reestablished by distance and direction. Show the discrepancy on the plan view drawing under (a), above. Show the distances between the corner as previously restored or reestablished and (1) the corner as restored or reestablished, and (2) to at least 4 of the witness monuments shown on the drawing in (a), above.

(E) Was the corner reestablished through lost corner proportionate methods? If so, show the method, including the directions and distances to other public land survey corners used as evidence or used for proportioning the corner location.
NO

I, Donald Barnes, hereby certify that the corner points as identified by the corner code index were, in a field survey, established, re-established, monumented, re-monumented, recovered or restored as expressed below and in conformance with the regulations and rules as required in the current manual of survey instructions of the United States Department of Interior, Bureau of Land Management.

COUNTY SURVEYOR FILING DATA

Date of computer entry _____

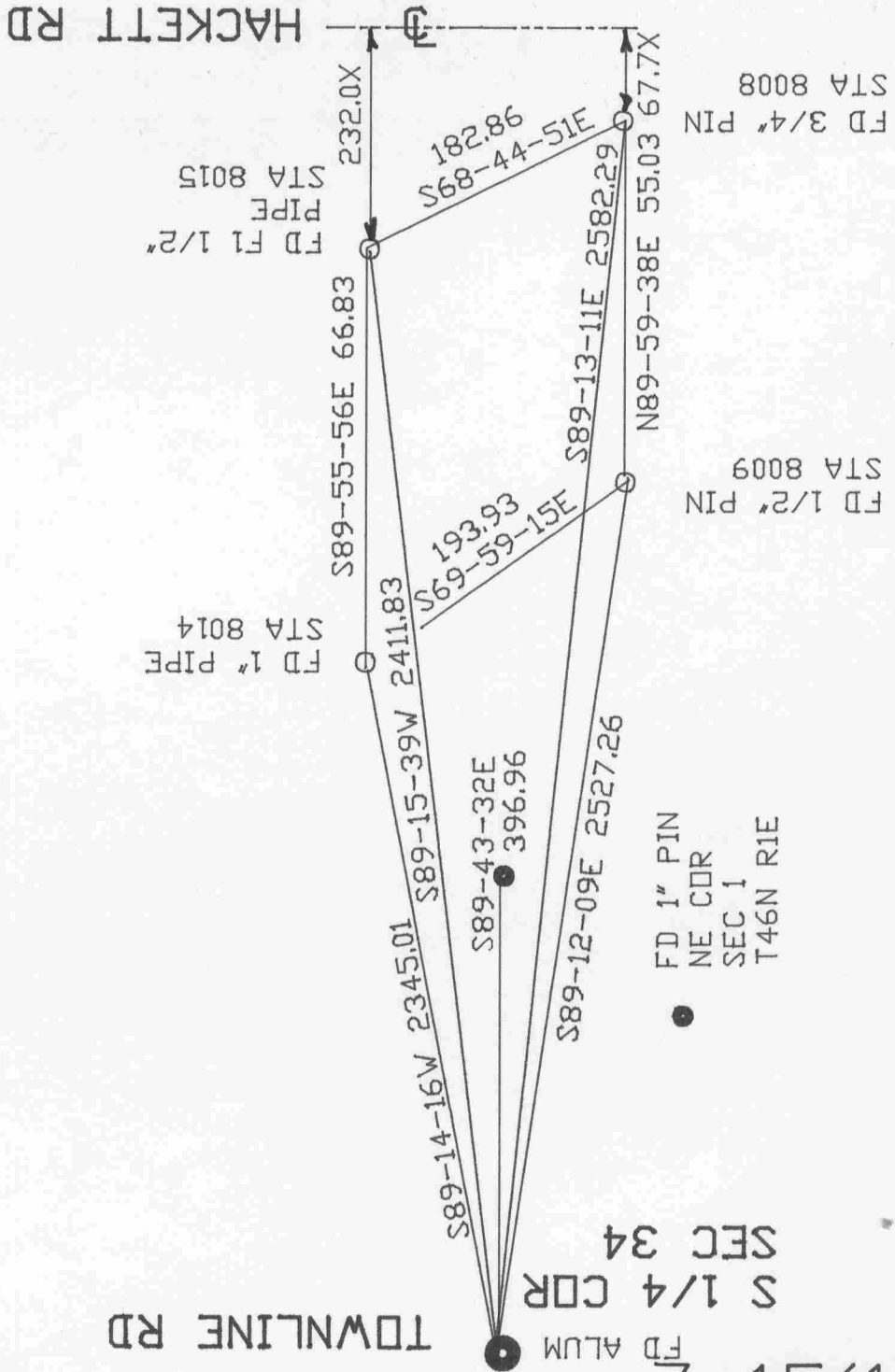
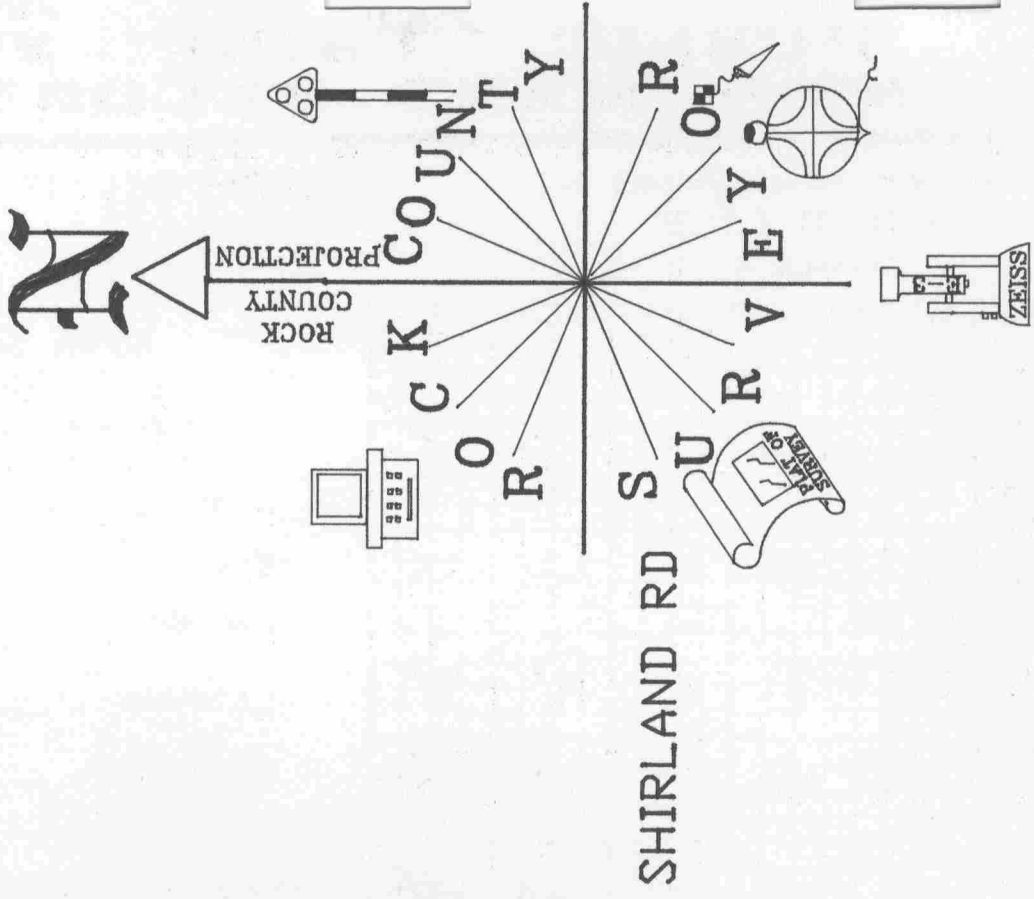
Number of included sheets _____

CORNER CODE

seal
Donald Barnes
OCT 16, 1998
EMBOSS LAND SURVEYOR SEAL

A-E 7.08 REQUIREMENT

Z 15 (1)



*Ronald Barnes
Oct 16, 1998*

(1)51-Z