

U.S. PUBLIC LAND SURVEY MONUMENT RECORD

For Public Land Survey Corners in:

WI ADMINISTRATIVE CODE A-E 7.08 REQUIREMENT

T. 1 N., R. 12 E

CORNER CODE INDEX

A	1	2	3	4	5	6	7	8	9	10	11	12	13	14	15	16	17	18	19	20	21	22	23	24	25
B	6	5	4	3	2	1																			
C																									
D																									
E																									
F	7	8	9	10	11	12																			
G																									
H																									
J																									
K	18	17	16	15	14	13																			
L																									
M																									
N																									
O	19	20	21	22	23	24																			
P																									
Q																									
R																									
S	30	29	28	27	26	25																			
T																									
U																									
V																									
W																									
X	31	32	33	34	35	36																			
Y																									
Z																									

BELOIT TWP
ROCK COUNTY WI

IF AVAILABLE
ROCK COUNTY COORDINATES PREFERRED

North 211,763.32 Elev. _____

East 480,325.00

Hor. Datum COUNTY Vert. Datum _____

LATITUDE _____ ELLIPS. HT. _____

LONGITUDE _____

GPS (X) _____ TRAVERSE (X) _____

BASED ON THE FOLLOWING CONTROL:

PLACE MONUMENT SYMBOL AT PROPER LOCATION ON ABOVE INDEX

CORNER MONUMENT WITNESS MONUMENT

BEARINGS ARE BASED ON: _____

FIELD BOOK _____ PAGE # _____

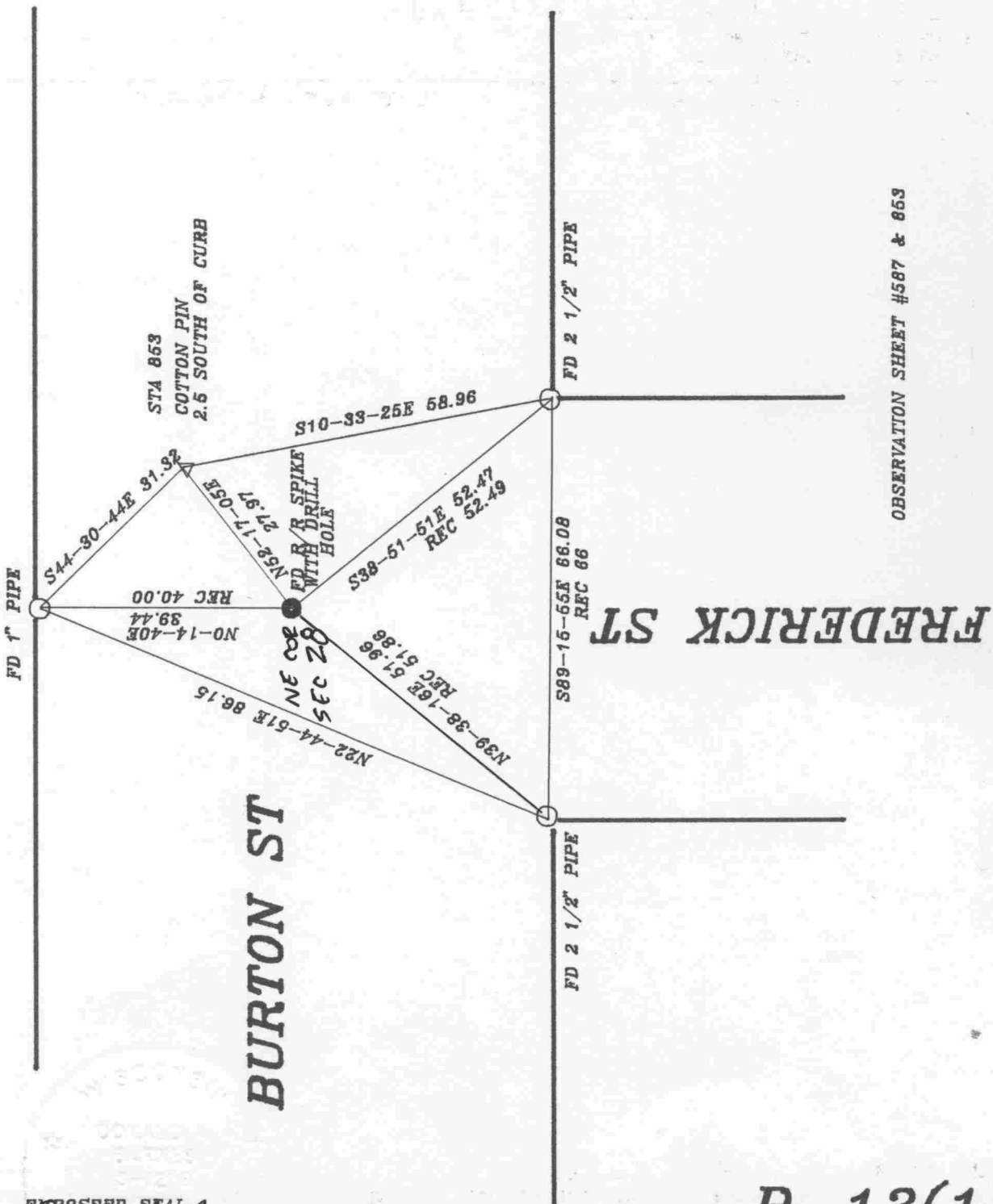
SHEET 1 OF 2

SHOW A PLAN VIEW DRAWING DEPICTING THE CORNER MONUMENT AND SURROUNDING PHYSICAL FEATURES, INCLUDING THE EXCAVATION AREA AND DEPTH.

PLANNING & ZONING COMMITTEE ADOPTED THE ABOVE FORM ON 12/2/1982

CORNER CODE R13(1)

**LOT 19
CHRISTILLA HEIGHTS**

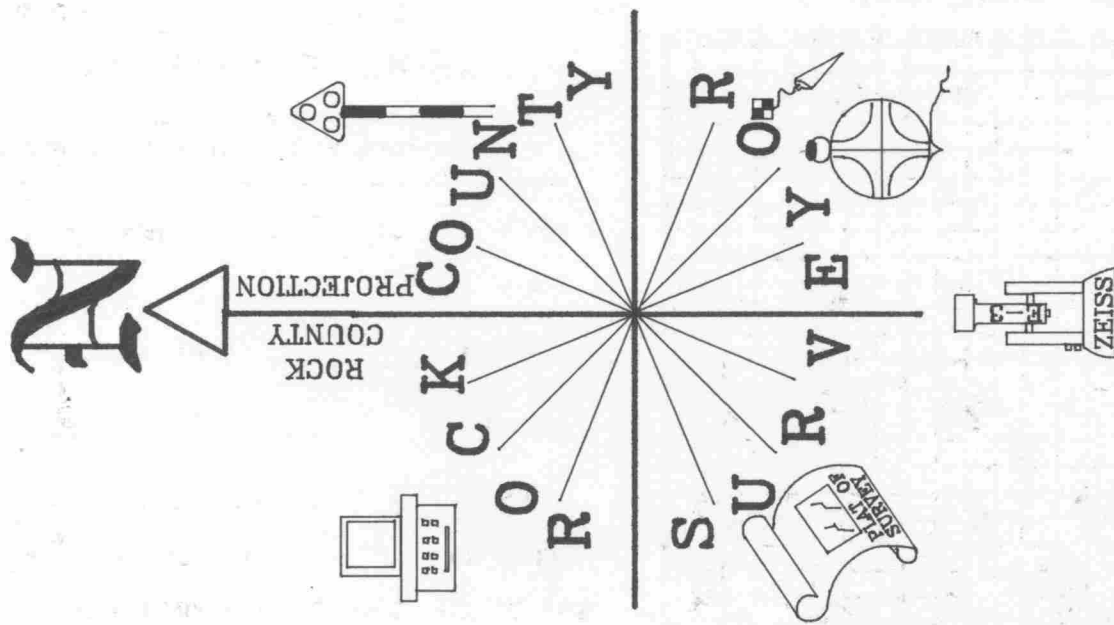


OBSERVATION SHEET #587 & 853

R-13(1)

EMBOSSED SEAL

Donald Barnes
2/4/98



BE587

(B) Describe any record evidence, monument evidence, occupational evidence, testimonial evidence or any other material evidence you considered, and whether the monument was found or placed.

1950 BATTERMAN MAP #80022 FOUND PIN

1958 SHIMEALL MAP #443 FOUND PIN 2660.80 TO E 1/4 CORNER SEC 21

1959 SHIMEALL SUBDIVISION PLAT BK 20 PG 6 FOUND 1" IRON PIN

1961 SHIMEALL SUBDIVISION PLAT BK 21 PG 7 1330.4 NORTH TO 1/16TH CORNER.

1962 SHIMEALL SUBDIVISION PLAT BK 21 PG 31 FOUND 1" PIN

1984 ROLOFF R13 LOCATION OF THIS CORNER WAS REESTABLISHED OFF FROM VERIFIED EXISTING MONUMENTS FOUND ON THE EAST LINE OF THE PLAT OF CHRISTILLA HEIGHTS (RECORDED 6-21-59). I WAS UNABLE TO FIND IRON PIN AT SECTION CORNER AS SHOWN ON THE FACE OF THE PLAT PREPARED BY SURVEYOR CLAYTON SHIMEALL. SET PK & REFERENCED SAME.

FOUND R/R SPIKE WITH DRILL HOLE THAT WAS IN HARMONY WITH EXISTING TIES.

C) Was the corner restored through acceptance of (1) an obliterated evidence location, or, (2) a found perpetuated location?

ACCEPTED FOUND PERPETUATED LOCATION.

D) Describe any material discrepancy between the location of the corner as restored or reestablished and the location of that corner as previously restored or reestablished by distance and direction. Show the discrepancy on the plan view drawing under (a), above. Show the distances between the corner as previously restored or reestablished and (1) the corner as restored or reestablished, and (2) to at least 4 of the witness monuments shown on the drawing in (a), above.

NONE

(E) Was the corner reestablished through lost corner proportionate methods? If so, show the method, including the directions and distances to other public land survey corners used as evidence or used for proportioning the corner location.

NO

I, Donald Barnes, hereby certify that the corner points as identified by the corner code index were, in a field survey on, JULY 17, 1997, established, re-established, monumented, re-monumented, recovered or restored as expressed below and in conformance with the regulations and rules as required in the current manual of survey instructions of the United States Department of Interior, Bureau of Land Management.

seal
Donald Barnes
44198

COUNTY SURVEYOR FILING DATA

Date of computer entry _____

Date microfilmed _____

Number of included sheets _____

CORNER CODE

EMBOSS LAND SURVEYOR SEAL

A-E 7.08 REQUIREMENT

R 13(1)