

U.S. PUBLIC LAND SURVEY MONUMENT RECORD

For Public Land Survey Corners in:

WI ADMINISTRATIVE CODE A-E 7.08 REQUIREMENT

T. 12N., R. 12E

CORNER CODE INDEX

A	1	2	3	4	5	6	7	8	9	10	11	12	13	14	15	16	17	18	19	20	21	22	23	24	25
B																									
C	6																								
D																									
E																									
F	1																								
G																									
H																									
J																									
K	18																								
L																									
M																									
N																									
O	19																								
P																									
Q																									
R																									
S	30																								
T																									
U																									
V																									
W																									
X	31																								
Y																									
Z																									

BELoit TWP
ROCK COUNTY WI

IF AVAILABLE
ROCK COUNTY COORDINATES PREFERRED

North 217,093.30 Elev. _____

East 480,366.77

Hor. Datum NAD 83(91) Vert. Datum _____

LATITUDE _____ ELLIPS. HT. _____

LONGITUDE _____

GPS (X) _____ TRAVERSE (X) _____

BASED ON THE FOLLOWING CONTROL:

AUG 25 2003 ADJUSTMENT
OF COMBINED TOWNSHIPS

PLACE MONUMENT SYMBOL AT PROPER LOCATION ON ABOVE INDEX

CORNER MONUMENT

WITNESS MONUMENT

BEARINGS ARE BASED ON:

FIELD BOOK _____ PAGE # _____

SHEET 1 OF 3

SHOW A PLAN VIEW DRAWING DEPICTING THE CORNER MONUMENT AND SURROUNDING PHYSICAL FEATURES, INCLUDING THE EXCAVATION AREA AND DEPTH.

PLANNING & ZONING COMMITTEE ADOPTED THE ABOVE FORM ON 12/2/1982

CORNER CODE N 13 (1)

BE567

(B) Describe any record evidence, monument evidence, occupational evidence, testimonial evidence or any other material evidence you considered, and whether the monument was found or placed.

1834 HARRISON **NORTH BETWEEN SECS 21 & 22**

1320 TO THE SUMMIT OF RIDGE E & W

2310 TO THE TRAIL TO TURTLE VILLAGE

2640 QUARTER SEC COR.

SET POST & RAISED MOUND ON GROUND DESCENDING EAST

5280 SET COR TO SECS 15,16,21,22 SET POST & RAISED MOUND. AT THE HEAD OF SMALL RAVEN CRS E.

NORTH BETWEEN SECTIONS 26 & 27

33 TO THE RANDOM STATE LINE

1782 TO A LARGE DROUGHT CRS E & LEAVE PRAIRIE

2640 QUARTER SEC CORNER ON GROUND SLOPING SOUTH EASTWARDLY TO DRAUGHT. SET A POST & RAISED A MOUND

3300 A DRAUGHT CRS S.E.

5214 TO A TRAIL CRS S.E. (SEE BELOW)

5280 COR TO SECS 22, 23,26, 27 ON GROUND SLOPING NORTHWARDLY. SET A POST & RAISED A MOUND.

THE TRAIL MENTIONED AT 5214' IS THE DIRECT RAIL FROM PRAIRIE DE CHAIN TO CHICAGO VIA THE BLUE MOUNDS-THENCE BY DAUGHERTY-THENCE BY WINNOCECKS VIL. OPPOSITE D ????? SUGAR RIVER THENCE BY TURTLE VILLAGE TO CHICAGO SAID TO BE A FINE HERETOFORE A ? FREQUENTED ROUTE.

EAST ON RAND BET. SECS 16 & 21

660 ENTER BOTTOM

1254 BROOK 1.32 CRS S (NEAR THE HEAD)

1782 TO A TRAIL HEADING TO TURTLE VILLAGE

2112 LEFT BOTTOM CRS S.W.

2640 TEMPY 1/4 SEC COR.

5258.88 INT E BDY 66 SOUTH OF POST.

COR WEST

2629.44 QUARTER SEC COR. SET A POST & RAISED MOUND ON GROUND DESCENDING S.W.

5258.88 SEC COR.

EAST ON RANDOM BETWEEN SECS 15 & 22

2640 TEMPY 1/4 SEC COR

3300 DESCEND INTO LOW WET GROUND CRS E

4620 LEFT SAME

5214 INT. E BOUNDARY 19.8 NORTH OF POST

COR. WEST BET. SECS 15 & 22

2607 QUARTER SEC COR SET POST AND RAISED MOUND ON A SMALL POINT DESCENDING NE.

5214 SEC COR.

1850 TOWN ROAD RECORDS BK 1 PG 120 DESCRIPTION BEGINS AT CORNER.

1856 TOWN ROAD RECORDS BK 1 PG 287 DESCRIPTION BEGINS AT CORNER.

1963 CTH "Q" PROJECT #51429(1) SHEET 4.2 FOUND MONUMENT BOX & REFERENCED SAME.

1963 BATTERMAN VOL 4 PG 182 REFERENCED COR. 2657.05 TO N 1/4 COR SEC 21.

1980 COMBS CSM V9 PG 189 FOUND MON. BOX 2616.2 TO N 1/4 COR SEC 22.

1987 COMBS CSM V13 PG 144 FOUND PIPE IN MONUMENT BOX.

1998 BARNES N-11 FOUND PIPE IN MONUMENT BOX.

FD 1" PIPE IN MON. BOX & SET REFERENCE MONUMENTS. PAVEMENT WAS GROUND. CTH Q WILL BE RESURFACED IN A FEW WEEKS & THE MONUMENT MAY BE DISTURBED

C) Was the corner restored through acceptance of (1) an obliterated evidence location, or, (2) a found perpetuated location?

ACCEPTED FD MONUMENT.

Errol Barnes
Aug 25 2003

SHEET 2 OF 3 **N-13(1)**

BE567

D) Describe any material discrepancy between the location of the corner as restored or reestablished and the location of that corner as previously restored or reestablished by distance and direction. Show the discrepancy on the plan view drawing under (a), above. Show the distances between the corner as previously restored or reestablished and (1) the corner as restored or reestablished, and (2) to at least 4 of the witness monuments shown on the drawing in (a), above.

NONE

(E) Was the corner reestablished through lost corner proportionate methods? If so, show the method, including the directions and distances to other public land survey corners used as evidence or used for proportioning the corner location.

NO

I, **Donald Barnes**, hereby certify that the corner location as identified by the corner code index was determined by me under my direction and control and that this U.S. Public Land Survey Monument Record is correct and complete to the best of my knowledge and belief.

Seal

Donald Barnes

Emboss

Aug 25, 2003

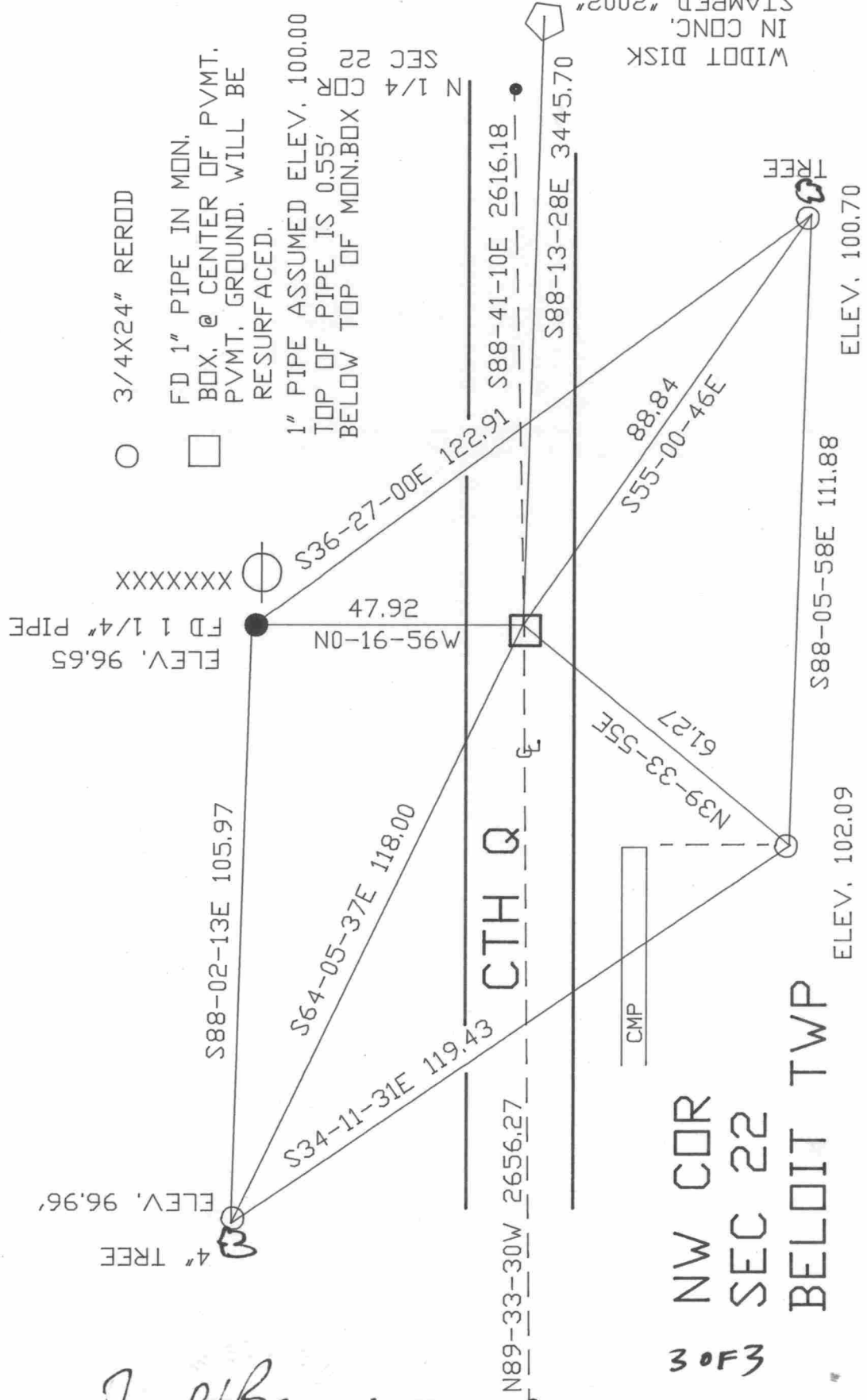
SHEET 2 OF 3

CORNER CODE **N-13(1)**

A.E. 7.08 REQUIREMENT

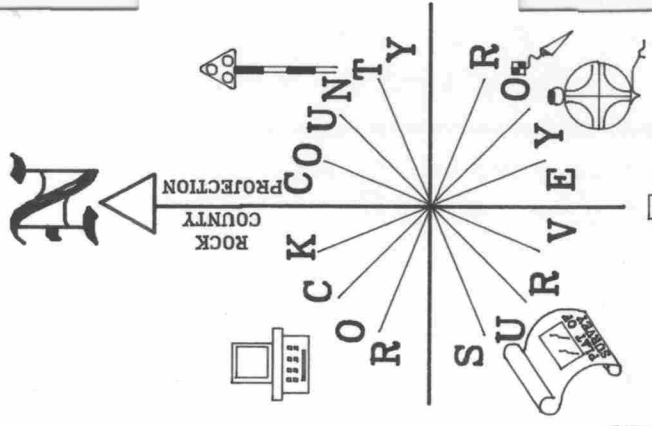
Donald Barnes
 SEC 21
 EMBOSSED SEAL
 N 1/4 COR
 Aug 25, 2003

N-13(1)
 3 OF 3
 NW COR
 SEC 22
 BELDIT TWP



- 3/4X24" REROD
- FD 1" PIPE IN MON. BOX, @ CENTER OF PVMT. PVMT. GROUND. WILL BE RESURFACED.
- 1" PIPE ASSUMED ELEV. 100.00 TOP OF PIPE IS 0.55' BELOW TOP OF MON.BOX

WIDOT DISK
 IN CONC.
 STAMPED "2002"
 1H21



NOT TO SCALE
 OBSERVATION SHEET 567B